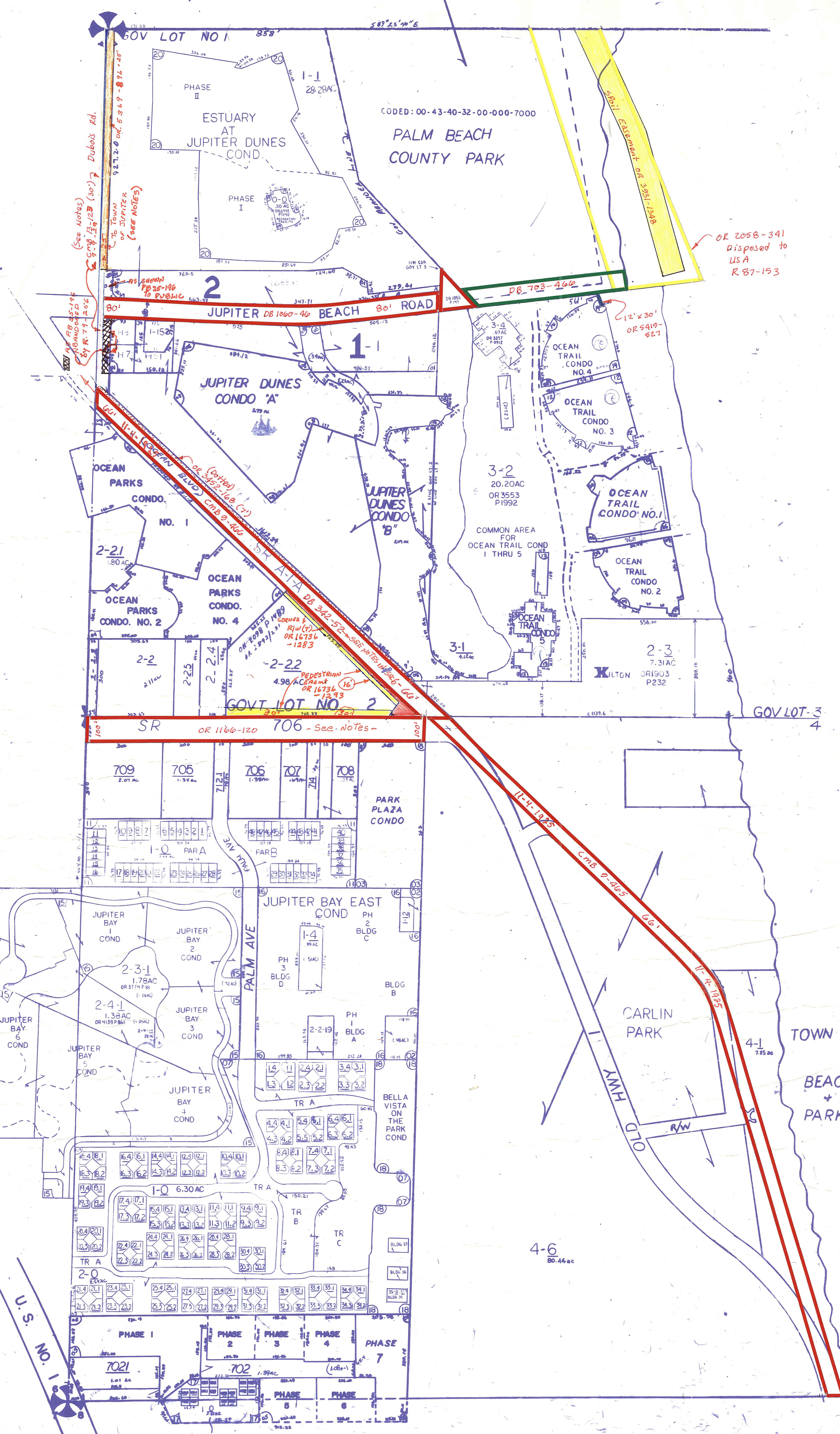
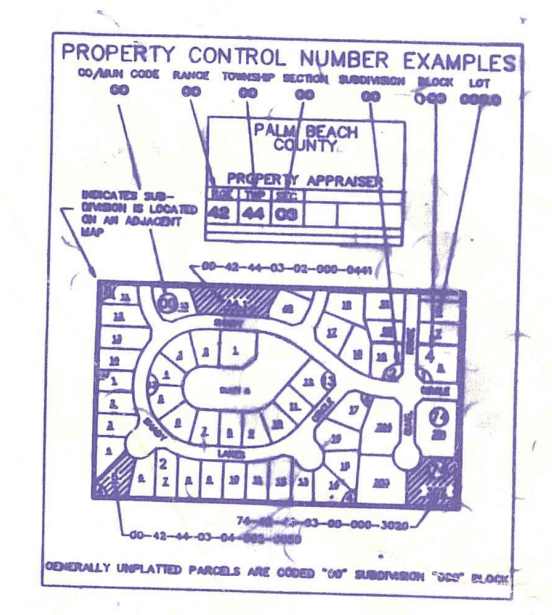
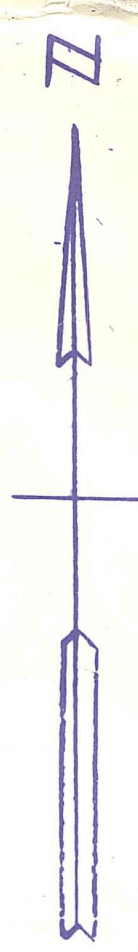


# ATLANTIC OCEAN



**Notes:**

- CMB 13-125 states that *see maintenance map RPB 5-3*  
Dubois Road R/W shall not be less than 30'. → By R. 98-1852D, DUBOIS RD. IS TRANSFERRED TO P.B.C. AS TRAFFIC CONTROL JURISDICTION & MAINTENANCE WITHIN NOTICITY LIMITS OF JUPITER.
- INDIANTOWN RD: P.B.C. MAINTAINS THIS RD. FROM SRS (V61) TO A-1-A. RES. 72-800.
- A-1-A To P.B.C. AS TRAFFIC CONTROL JURISDICTION & MAINTENANCE WITHIN JUPITER CITY LIMITS: R. 98-1852D.

- NW 01 PALM BEACH RIDGE BY THE SEA, PL. 1, PB 25-196
- SW 02 RUBY HGTS. REV PL 1 PE 15-27
- SW 03 PARK PLAZA CONDO
- NW 04 OCEAN PARKS CONDOS. 1, 2 (1976), 4 (1979), 5 (1980), 6, 7 (81), 8-11
- SW 05 VILLAS ON THE GREEN CONDOS. 1, 2, 3, & 4, 5, 6, & 7, 8, 9.
- NW 06 OCEAN TRAIL CONDO. NO. 1
- SW 07 BELLA VISTA (1981) PB 41 P49 TWNHS TM 81-72
- NW 08 JUPITER DUNES CONDO "A" (1981) CONDO'S (2/2/83)
- NW 09 OCEAN TRAIL CONDO NO. 2 (1982)
- 10 SEA PALMS TWHs (1982) PB 43 P105
- SW 11 SEA PALMS REPLAT (1983) PB 43 P167
- NW 12 OCEAN TRAIL CONDO NO. 3 (1983)
- NW 13 OCEAN TRAIL CONDO NO. 5 (1983)
- NW 14 OCEAN TRAIL CONDO NO. 4 (1983)
- SW 15 JUPITER BAY CONDOS (1983) (83), (87)
- SW 16 JUPITER BAY EAST CONDOS (89), (90), (91)
- SW 17 VILLAS ON THE GREEN TOWNHOUSES (8) PB 64 P179
- SW 18 BELLA VISTA ON THE PARK COND (91)
- NW 19 ESTUARY AT JUPITER DUNES (8) PB 65 P32
- NW 20 ESTUARY AT JUPITER DUNES COND PH I (II) (91)

NOTE:  
NOT TO BE REPRODUCED IN ANY FORM EXCEPT BY EXPRESS WRITTEN CONSENT FROM THE PALM BEACH COUNTY PROPERTY APPRAISER  
Information shown hereon is compiled from the best available sources and CANNOT be used for surveys or land transfers of any type.

**Palm Beach County (County) makes no representation or warranties whatsoever on the attached / enclosed information reflected herein pertaining to easements, rights-of-way, setback lines, reservations, agreements, and other similar matters. The information provided herein should not be relied upon by the requesting party to confirm the existence / non-existence of facts contained herein.**



PALM BEACH COUNTY			
N-8			
PROPERTY APPRAISER			
R&E	TWP	SEC	AERIAL
43	41	5	NO. 1110
SCALE 1" = 200'			
DRAWN BY			
UPDATED BY			

36	37	38	39	40	41
1	2	3	4	5	6
7	8	9	10	11	12
13	14	15	16	17	18
19	20	21	22	23	24
25	26	27	28	29	30
31	32	33	34	35	36