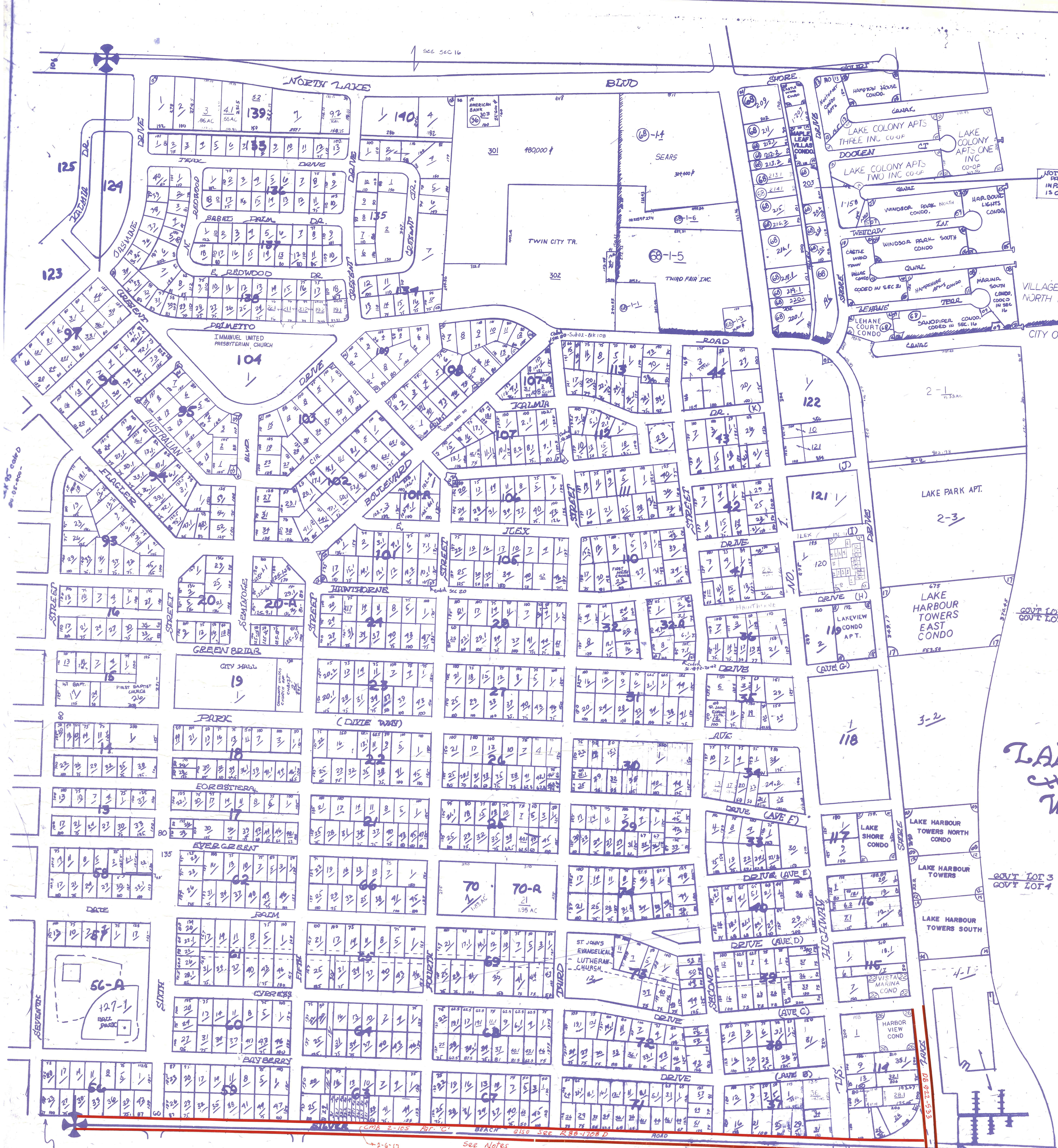
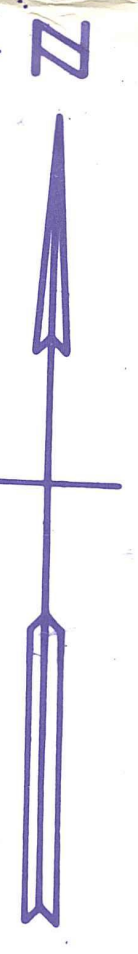


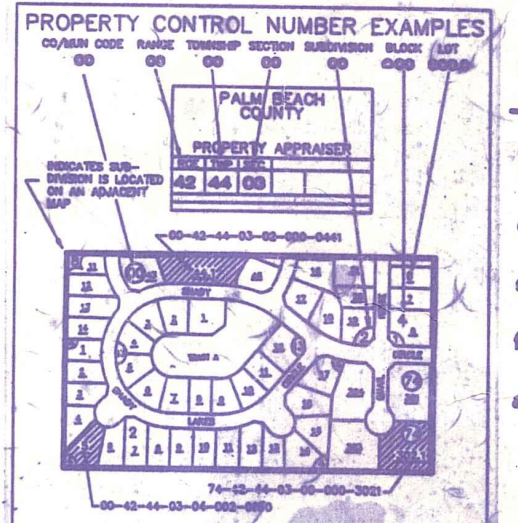
Palm Beach County (County) makes no representation or warrants whatsoever on the attached / enclosed information reflected herein pertaining to easements, rights-of-way, setback lines, reservations, agreements, and other similar matters. The information provided herein should not be relied upon by the requesting party to confirm the existence / non-existence of facts contained herein.



- nw01 REPL. OF BLKS 108 & 109 KELSEY CITY PB 25-58
- 02 PB 25-151
- 03 LAKE PARK ADD PB 27-76
- 04 PALM BEACH LAKE WORTH EST REPL. OF LOTS 146-154
- 05 HARBOR LIGHTS CONDO
- 06 WINDSOR PARK SO. CONDO.
- 07 NO.
- 08 HAMPTON HOUSE CONDO.
- 09 LAKE HARBOR TOWERS NO. CONDO.
- 10 CASTLEWOOD TOWN VILLAS CONDO
- 11 HAMPSHIRE ARMS CONDO APTS.
- 12 LAKE HARBOR TOWERS CONDO
- 13 NORTHPORT CONDO APTS.
- 14 LAKE HARBOR TOWERS SO. CONDO.
- 15 LAKE SHORE CONDO.
- 16 LEHANE COURT CONDO. (1975)
- 17 LAKE HARBOR TOWERS' EAST CONDO.
- 18 LAKEVIEW APTS. CONDO (1977)
- 19 MAPLE LEAF VILLAS CONDO. (1978)
- 20 CASTLEWOOD CONDO (1980)
- 21 CEDAR CREST TWINS (1983)
- 22 VISTA MARINA CONDO (1987)
- 23 LAKE COLONY APTS ONE INC CO-OP
- 24 LAKE COLONY APTS TWO INC CO-OP
- 25 LAKE COLONY APTS THREE INC CO-OP
- 26 HARBOR VIEW COND (1989)

Notes:
- Silver Beach transferred to P.B. Co. between Western Terminal & U.S. #1 as per RBT-1592. Letter dated 1-7-97

PART OF NE 1/4 IN VILLAGE OF HNB
REMAINDER IN LAKE PARK



PALM BEACH COUNTY
N-15
PROPERTY APPRAISER

RGE	TWP	SEC	NE/4
13	42	21	NO. 26
SCALE	1" = 200'		
DRAWN BY	[Signature]		
UPDATED	4-6-92		

KELSEY CITY 15 CODED
01 FROM SEC. 20

SUB OF KELSEY CITY
CODE SEC-20-SUB-01 THROUGHOUT SEC.
SEE MOST BOLD BLOCK NUMBERS