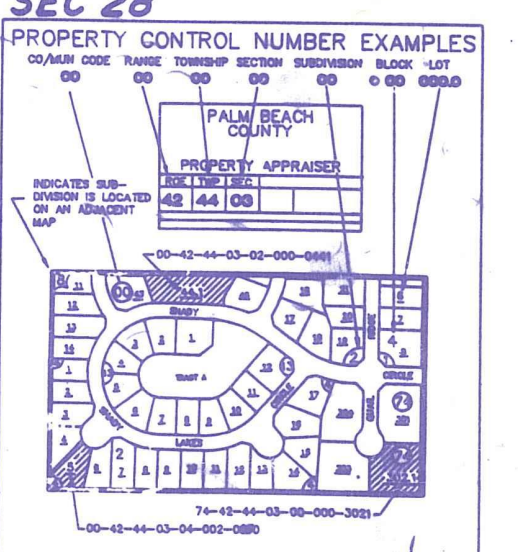


Palm Beach County (County) makes no representation or warranties whatsoever on the attached / enclosed information reflected herein pertaining to easements, rights-of-way, setback lines, reservations, agreements, and other similar matters. The information provided herein should not be relied upon by the requesting party to confirm the existence / non-existence of facts contained herein.

Should be CM 2-105 2-6-1917

NOTE:
SUB 26 IS CODED IN SEC 28



- SW 01 ACREHOME PARK PB 6 - PG 66
- NW 02 " " ADD NO 1 PB 9 - PG 44
- NW 03 " " ADD NO 2 PB 3 - PG 34
- SW 04 " " ADD NO 3 PB 15 - PG 17
- NE 05 ADDIS ABABA PB 18 - PG 99
- NE 06 " " 1ST ADD PB 20 - PG 17
- SW 07 ALLISON PARK PB 21 - PG 98
- SW 08 DAVIS SUB PB 23 - PG 73
- NE 09 DUNBAR TERR PB 11 - PG 19
- NAS 1/2 10 LAURAVILLE PB 7 - PG 48
- S 1/2 11 LEWIS TERMINALS NO 1 PB 25 - PG 63
- NE 12 MOLPHUS HGTS PB 9 - PG 68
- S 1/2 13 MONROE HGTS PB 11 - PG 68
- NE 14 PINE HILL PB 23 - PG 204
- SE 15 MONROE HGTS 1 ADD PB 25 - PG 156
- NE 16 PLEASANT HGTS PB 10 - PG 28
- NE 17 " " 2ND PB 25 - PG 124
- NE 18 RAIN BOW GARDENS PL 2 PB 26 - PG 66
- NE 19 " " PB 21 - PG 6
- NE 20 ROBINSON SUB PB 15 - PG 29
- SW 21 SHADY GROVE PB 20 - PG 8
- NE 22 SILVER BEACH ACRES PB 23 - PG 16
- NE 23 REPL. LT 9 SILVER BEACH PB 20 - PG 15
- NE 24 SILVER BEACH ACRES PL 2 PB 14 - PG 3
- SW 25 SLOANS SUB PB 27 - PG 84
- SW 26 LEWIS TERM. PL. NO. 2 2ND SUB PB 27 - PG 107
- NW 28 DATURA PARK NO 1 PB 27 - PG 165
- NW 29 " " NO 2 PB 27 - PG 176
- SW 30 LEWIS TERM. PL. NO. 2 2ND SUB OF 5115 FT OF N155 FT PB 28 - PG 176
- NE 31 ANDERSEN PB 28 - PG 32
- NE 32 ROSS ADD PB 28 - PG 35
- SW 33 DATURA PARK SOUTH PL 1 PB 28 - PG 56
- SW 34 " " PL 2 PB 28 - PG 57
- NE 35 PLAT OF WILSON PB 28 - PG 146
- NE 36 NOHELY PB 28 - PG 90
- SW 37 LEWIS TERM. NO 2 3RD SUB OF 5115 FT OF N155 FT PB 28 - PG 99
- NE 38 STRIANESE ARMS PB 28 - PG 148
- NE 39 PARK MANOR NO. 2 REPL. PB 28 - PG 195
- NE 40 STRIANESE NORTH PB 29 - PG 156
- NE 41 SUGAR HILL PB 30 - PG 3
- NE 42 CAROL PARK PB 30 - PG 162
- SE 43 LEWIS TERMINALS PLAT(1976)NO 2-A PB 31 - PG 5
- SE 44 MONROE HGTS. ADD 1 REPLAT PB 31 - PG 235 (1977)
- S 45 KING ESTATES (1977) PB 32 - P 49
- NE 46 REPL S 1/2 LT 21 SILVER BCH ACS PB 34 - PG 6 (1971)
- 47 MONROE HGTS REPLAT NO 1 PB 35 - PG 27 (1971)

NOTE:
ALL OF SEC. 29 IS CODED IN MUN OF RIVIERA BCH 56

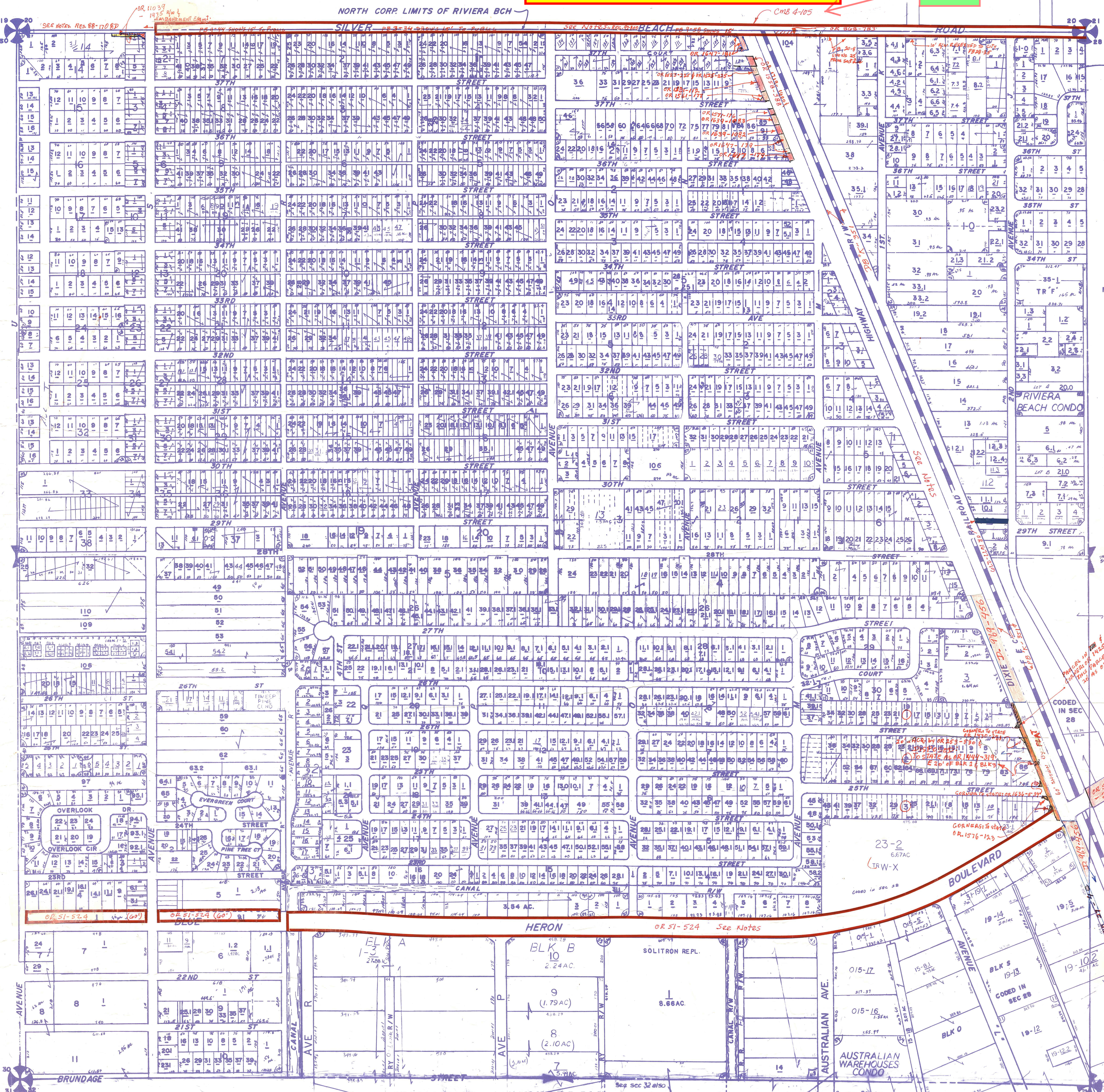
- SE 51 PALM BEACH OIL (B1) PB 41P9
- SE 52 METZGER TRACT (1982) PB 42 P185
- SE 53 SOLITRON (1982) PB 43 P76
- SE 54 AUSTRALIAN WAREHOUSE CONDO (1982) PB 44 P43
- SE 55 LEWIS TERMINALS PL. NO. 2-C (1983) PB 44 P79 (1983)
- SE 56 SOLITRON REPLAT PB 44 P79 (1983)
- NE 57 SUGAR HILL REPLAT OF FORTUN PB 45 P164 (1984)
- NE 58 SUN COAST TERRACE PB 46 P13 (1984)
- SW 59 TIMBER PINE CONDO (89) PB 37 P 9
- SW 60 TIMBER PINE WEST AIKIA ALLISON PARK PB 21 P 25

NOTE:
NOT TO BE REPRODUCED IN ANY FORM EXCEPT BY EXPRESS WRITTEN CONSENT FROM THE PALM BEACH COUNTY PROPERTY APPRAISER
Information shown herein is compiled from the best available sources and CANNOT be used for survey or land transfers of any type.

PALM BEACH COUNTY
N-15
PROPERTY APPRAISER

31	32	33	34	35	36	37	38	39	40
41	42	43	44	45	46	47	48	49	50
51	52	53	54	55	56	57	58	59	60
61	62	63	64	65	66	67	68	69	70
71	72	73	74	75	76	77	78	79	80
81	82	83	84	85	86	87	88	89	90
91	92	93	94	95	96	97	98	99	100

SCALE: 1" = 200'
DRAWN BY: KESHIAN 7-28
UPDATED:



Notes:
- Silver Beach Rd, between Ave. S & Lake Shore Dr. maintained by P.B.C. FROM AV. S TO CONGRESS BY RES. 88-1708D.
- Blue Heron Blvd, between U.S. #1 & I-95 maintained by P.B.C. as per R 92-1366
- Blue Heron + Br. 99-793 TRANSFERRED TO STATE BOWN I-95 TO US1/SR5

- Blue Heron Blvd, between U.S. #1 & West City Limits of Riviera Bch. maintained by P.B.C. as per R 92-800. → TRANSFERRED TO STATE BOWN I-95 TO US1/SR5 BY R. 99 793
- Old Dixie Hwy, maintained by P.B.C. within Riviera Bch. City Limits as per R 92-800

SILVER BEACH RD. MAINTAINED BY P.B.C. FROM AV. S TO CONGRESS BY RES. 88-1708D.

SEE SEC 32 ALSO

OR 51-524 See Notes

23-2 6.67AC TRW-X

AUSTRALIAN WAREHOUSE CONDO

NOTE:
SUB 26 IS CODED IN SEC 28