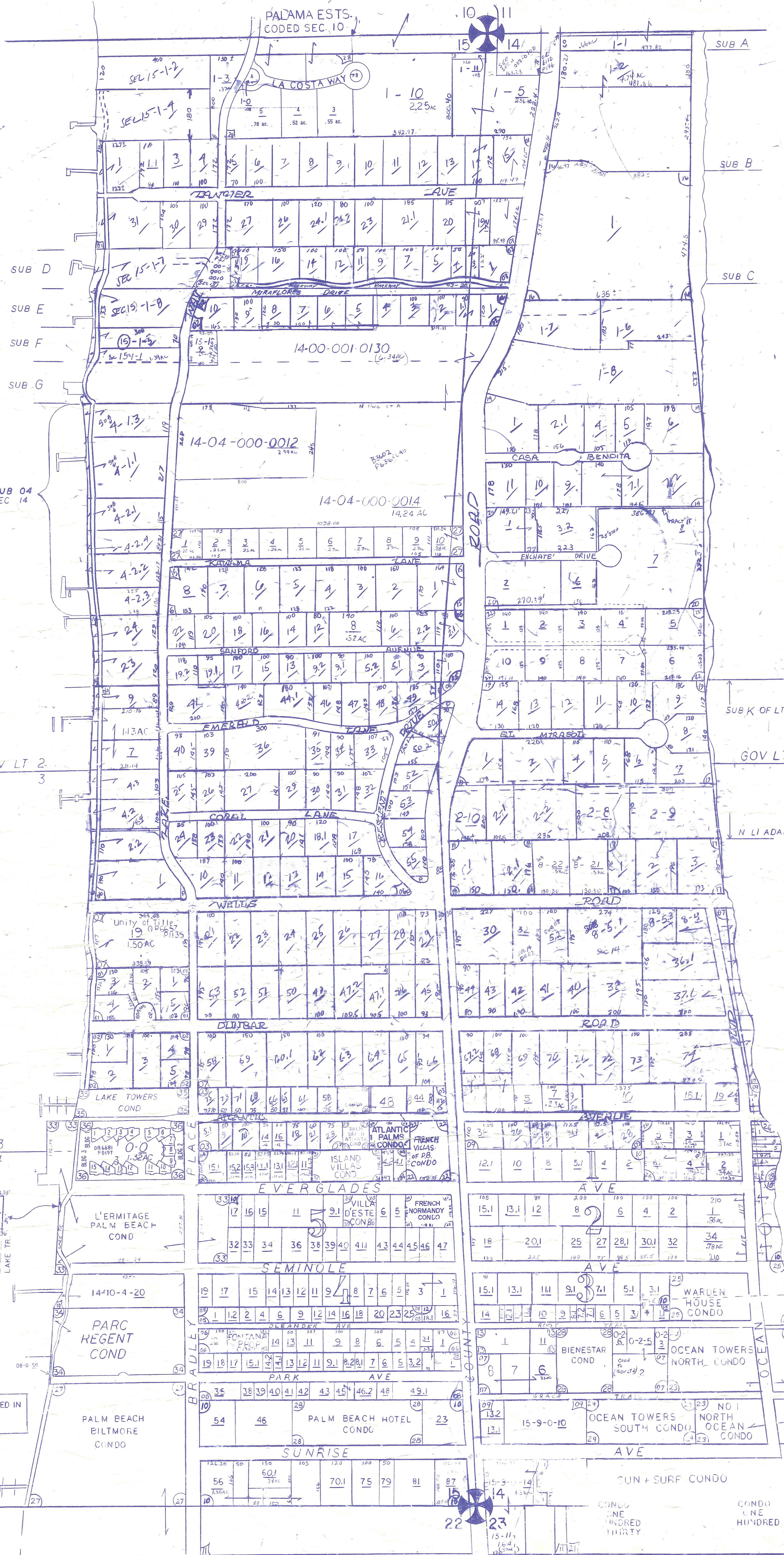
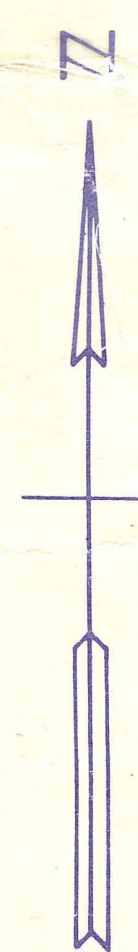


Palm Beach County (County) makes no representation or warranties whatsoever on the attached / enclosed information reflected herein pertaining to easements, rights-of-way, setback lines, reservations, agreements, and other similar matters. The information provided herein should not be relied upon by the requesting party to confirm the existence / non-existence of facts contained herein.



NOTE: SUB 04 CODED SEC 14

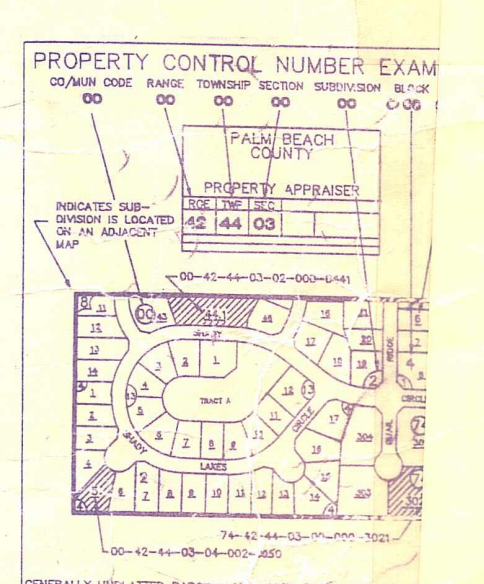
- SEC 15
- s 1/2 01 ADAMS CIRCLE REPL PB 24 - 229
 - s 1/2 02 ADAMS REPL OF LTS 56 & 57 PB 26 - 3
 - s 1/2 03 ORANGE GROVE PARK PB 5 - 97
 - s 1/2 04 OCEAN PARK ADD NO 1 PB 9 - 62
 - s 1/2 05 DAISY E. ERBS ADD PB 9 - 75
 - SW 06 JEANETTE COURT ADD PB 10 - 15
 - 07 GRACE TRAIL ADD (LOCATED IN S 1/2 OF SEC 14) PB 7 - 13
 - s 1/2 08 BUNGALOW PARK ADD PB 7 - 26
 - 09 SUNRISE AVE ADD (LOCATED SEC 14) PB 7 - 62
 - s 1/2 10 " " " 2 PB 8 - 69
 - 11 FLORAL PARK (LOCATED IN LINE SEC 22 1/2) PB 2 - 6
 - 12 " " " ADD NO 1 (LOCATED SEC 14) PB 5 - 28
 - 13 " " " NO 2 PB 6 - 38
 - 14 GALLAGHERS RESUB PB 6 - 69
 - N 1/2 15 A. T. ROSE ADD PB 10 - 4
 - 16 PINWOOD TERRACE PB 2 - 3
 - NW 17 LAKESIDE COURT PB 5 - 43
 - 18 REV PL OF LAKESIDE CT S₀ PB 5 - 36
 - 19 GRUBER CARLBERG ADD PB 7 - 63
 - 20 BRELSFORD PARK PB 8 - 21
 - 21 AMENDED PL OF EUCALYPTUS PARK PB 6 - 44
 - s 1/2 22 FRENCH VILLAS CONDO
 - SE 23 NO 1 NORTH OCEAN CONDO
 - s 1/2 24 ATLANTIC PALMS CONDO (1979) -
 - s 1/2 25 FRENCH NORMANDY CONDO -
 - s 1/2 26 PALM BEACH ATLANTIC CONDO (1980) -
 - s 1/2 27 " " BILTMORE " (1981) -
 - s 1/2 28 " " HOTEL " (1983) -
 - s 1/2 29 PALM BEACH ATLANTIC CONDO ANNEX (1984) -
 - s 1/2 30 VILLA D'ESTE CONDO (1984) -
 - s 1/2 31 ISLAND VILLAS CONDO (1984) -
 - s 1/2 32 FONTANA PROPERTIES CONDO (1984) -
 - s 1/2 33 L'ERMITAGE PALM BEACH CONDO (1986) -
 - s 1/2 34 PARC RECENT CONDO (1989) -
 - s 1/2 35 LAKE TOWERS CONDO (1989) -
 - s 1/2 36 VILLA PLATI (1993) -

- SEC 14
- 01 TANGIER EST PB 12 - 16
 - 02 DRAKE PARK PB 20 - 11
 - 03 EL PARAISO PB 12 - 5
 - 04 AMENDED PL OF MIRAMAR PLAN PB 6 - 55
 - 05 WALTON ADD REV PB 18 - 83
 - 06 STOTES BURY PARK REV PB 20 - 42
 - 07 ADAMS ADD PB 7 - 68
 - 08 " " REPL PB 16 - 9
 - 09 PROXIMITY PARK PB 2 - 9
 - 10 OCEAN PARK PB 6 - 78
 - 11 " " BLVD PARK (SEE SUB 25) PB 7 - 72
 - 12 ROOTS SUB PB 1 - 22
 - 13 DUPLEX COURT PB 14 - 15
 - 14 CASA BENDITA PB 27 - 72
 - 15 KAWAMA LANE PB 27 - 56
 - 16 REEF EST PB 28 - 55
 - 17 LINDA VISTA PB 28 - 34
 - 18 WELLS CIRCLE PB 25 - 244 & PB 28 - 52
 - 19 EL MIRASOL PB 28 - 60
 - 20 CHATEAUX ENCHANTE' PB 29 - 158
 - 21 SUN & SURF CONDO ONE HUNDRED THIRTY (1979) ONE HUNDRED THIRTY (1979) PB 36 - 88
 - 22 LOS INCAS ADDITION (1980) (1981)
 - 23 OCEAN TOWERS NORTH CONDO (1981)
 - 24 " " SOUTH " (1981)
 - 25 WARDEN HOUSE CONDO (1981)
 - 26 PARANGON (1984) PB 45 - 75
 - 27 BLENHEIM SUB. (1984) FE43FC5
 - s 1/2 28 BIENESTAR CONDO (1989)

NOTE: ALL SUBS LISTED ARE IN THE MUN OF PALM BCH. SOME SUB RUN BOTH SEC'S ARE CODED LOWER SEC.

ATLANTIC OCEAN

NOTE
NOT TO BE REPRODUCED IN
ANY FORM EXCEPT BY
PERMISSION OF THE
PROPERTY APPRAISER



14-43-43
70
29-43-43

PROPERTY APPRAISER			
RGE	TWP	SEC	AERIAL
43	43	14	15
SCALE 1" = 200'			
DRAWN BY			
UPDATED			

36	31	32	33	34	35	36	37
1	2	3	4	5	6	7	8
9	10	11	12	13	14	15	16
17	18	19	20	21	22	23	24
25	26	27	28	29	30	31	32
33	34	35	36	37	38	39	40
41	42	43	44	45	46	47	48
49	50	51	52	53	54	55	56
57	58	59	60	61	62	63	64
65	66	67	68	69	70	71	72
73	74	75	76	77	78	79	80
81	82	83	84	85	86	87	88
89	90	91	92	93	94	95	96
97	98	99	100				

BULKHEAD LI APPROVED IN DR655P696 SEE FOLDER

LAKE WORTH