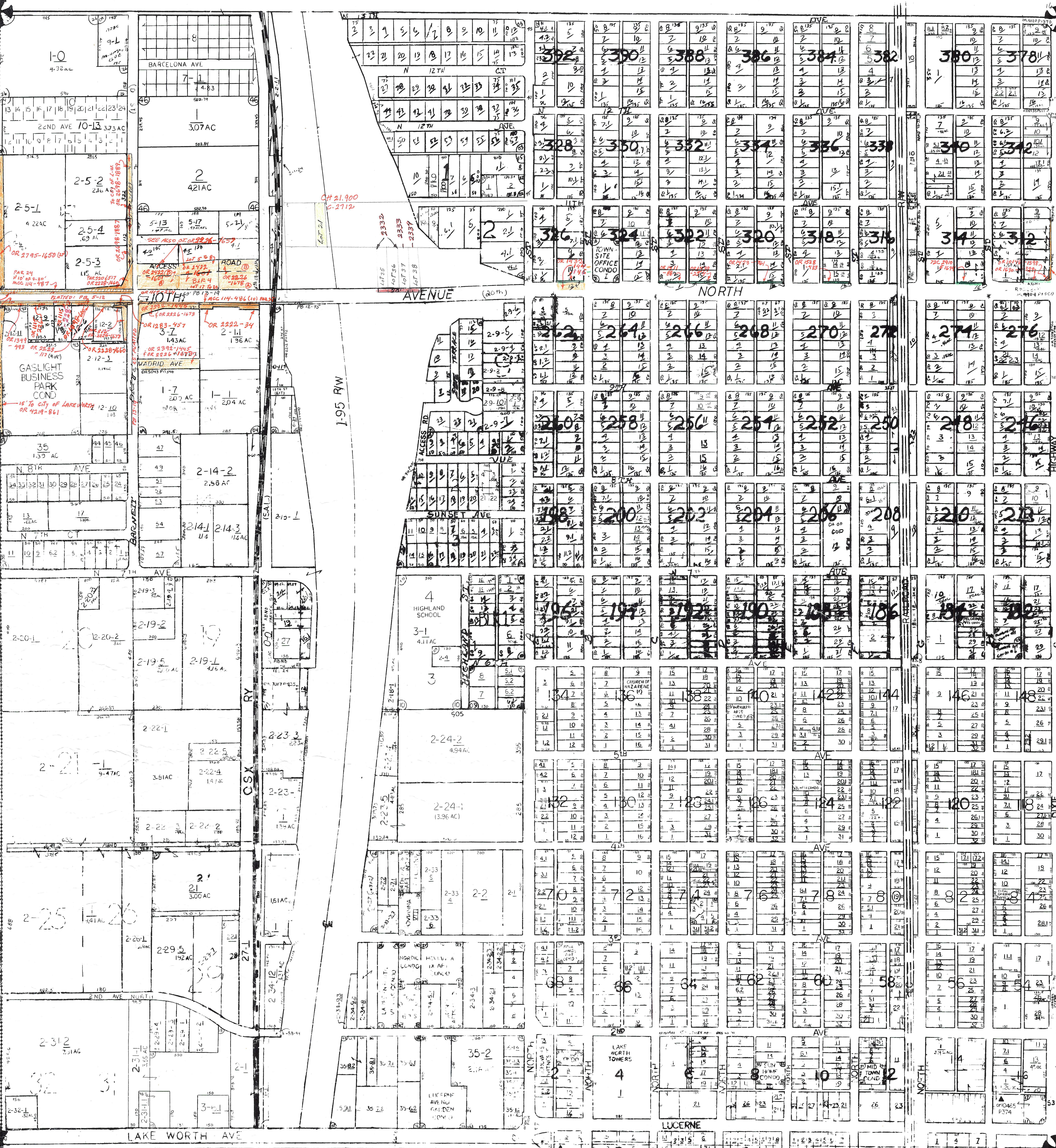


CORPORATE LIMITS
LAKE WORTH

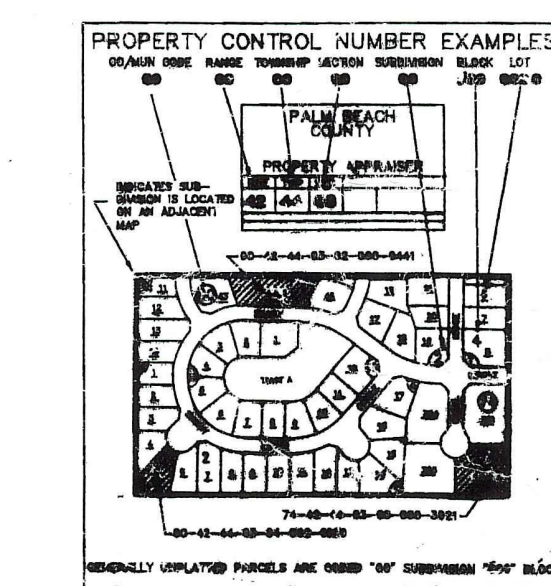


Palm Beach County (County) makes no representation or warranties whatsoever on the attached / enclosed information reflected herein pertaining to easements, rights-of-way, setback lines, reservations, agreements, and other similar matters. The information provided herein should not be relied upon by the requesting party to confirm the existence / non-existence of facts contained herein.

- NW01 ORANGE CREST PB 24-209
- W 02 SUB OF W 1/2 (INDICATED BY LARGE DOTTED NOS) PB 5-12
- NW03 CRESTRIDGE HGTS PB 24-125
- NW04 BARCELONA GARDENS PB 13-19
- NW05 GROVELAND PARK PB 10-40
- NW06 SUNSET GROVE PB 12-75
- NW07 PL OF LAKE WORTH INDUSTRIAL PARK PB 26-176
- NW08 HILLCREST PB 12-40
- SW09 CITRUS PARK ADD. PB 6-63
- SW10 THE HIGHLANDS PB 13-37
- SW11 FINNS ADD PB 14-20
- SW12 ALTA VISTA PARK PB 13-24
- SW13 LIBERTY TERR PB 7-1
- SW14 GEHMANS ADD PB 4-62
- E 15 TOWN OF LAKE WORTH PB 2/29-40
(BLKS INDICATED BY LARGE DARK NOS & LETTERS)
- SW15 SUB OF LT 1, BLK 34 IN W 1/2 PB 11-27
- SE 17 PLAT OF UNION SQUARE (IN BLK 16) PB 29-215
- SW18 DRANDYS SUB (TAKEN FOR 1993) P228 !!!
- N 19 F STREET VILLA CONDO BLK 206
- SE 20 FAIR WIND APT CONDO.
- SE 21 TOWNSITE APTS SIX CONDO
- NW22 FEARNLEY TR. PB 30-19
- SE 23 TOWNSITE APT. II CONDO
- SE 24 HOIANNNA VI APTS CONDO
- SW25 HOIANNNA VIII APT. CONDO (1977)
- NW26 SOUTHERN BELL TEL. & TEL. CO.
(1978) L.W. PLANT WORK CEN PB 33-87
- SW27 HOIANNNA IX APTS. CONDO. (1978)
- SE 28 VARVIKKO APTS. CONDO. (1978)
- SW 29 LAPPEENRANTA VILLAS CONDO (1980)
- SE 30 VAKA CONDO (1980)
- SW 31 SKANDIA APTS. CONDO (1981) PLK 34 LT 41
- SE 32 SUN HOME CONDO (1981)
- SE 33 CORAL GARDENS APTS II CONDO BLK 84 LT 40
- NE 34 PELGRIMM APTS CONDO (1981) BLK 169 LTS 25 & 26
- SW 35 LUCERNE AVE GARDEN CONDO (1981/82) BLK 35 (1951/86)
- SW 36 1741 CONDO (1981) BLK 33 LT 61
- SE 37 MARTHA APTS. CONDO (1981) BLK 124 LT 11 & 12
- NE 38 TOWNSITE OFFICE CONDO I (1981) BLK 324 LT 1 & 2
- SE 39 MID-TOWN CONDO (1981) BLK 12 LTS 3 & 5
- SW 40 NORDIC CONDO (1982) SUB 2 BLK 34 LT 61
- SW 41 SAIMMA VILLAS CONDO (1982) TERMINATED 1/55/2013
- SW 42 SUNSET TERRACE OF THE PALM BEACHES CONDO (1982)
SUB 2 BLK 34
- NW 43 GASLIGHT BUSINESS PARK CONDO (1982)
- SW 44 FOURTH AVE APTS INC CO-OP
- SE 45 LAKE WORTH PLACE (93) PB 60P161
- NW 46 BARNETT BUSINESS PARK (2000) PB 60P168

NOTE:
ALL OF SEC. 21 IS WITHIN
MUNICIPALITY OF LAKE WORTH
CODED 33

NOTE:
NOT TO BE REPRODUCED IN
ANY FORM EXCEPT BY EXPRESS
WRITTEN CONSENT FROM THE
PALM BEACH COUNTY
ASSESSOR.



PALM BEACH COUNTY
GARY R. NIKOLITS
PROPERTY APPRAISER

31	32	33	34	35	36	37	38	39	40
1	2	3	4	5	6	7	8	9	10
11	12	13	14	15	16	17	18	19	20
21	22	23	24	25	26	27	28	29	30
31	32	33	34	35	36	37	38	39	40
1	2	3	4	5	6	7	8	9	10
11	12	13	14	15	16	17	18	19	20
21	22	23	24	25	26	27	28	29	30
31	32	33	34	35	36	37	38	39	40
1	2	3	4	5	6	7	8	9	10

SCALE 1" = 200'

DRAWN BY: [Signature]

SEE SEC 28