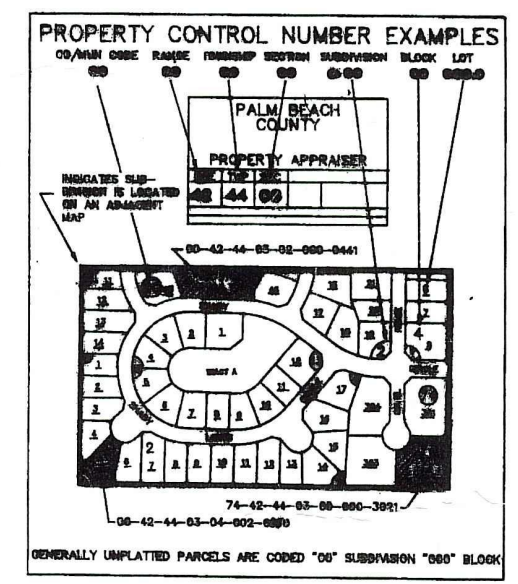


Palm Beach County (County) makes no representation or warranties whatsoever on the attached / enclosed information reflected herein pertaining to easements, rights-of-way, setback lines, reservations, agreements, and other similar matters. The information provided herein should not be relied upon by the requesting party to confirm the existence / non-existence of facts contained herein.

FL D.Q.T. DISCLAIMER
RE: OLD SR A1A OR1682P1048
NOTE: OCEAN BLVD R/W IS FOUND IN RPB 4 P171.

NOTE: LAKE WORTH IS (38)
PALM BEACH IS (50)



NOTE:
NOT TO BE REPRODUCED IN ANY FORM EXCEPT BY EXPRESS WRITTEN CONSENT FROM THE PALM BEACH COUNTY ASSESSOR.
Information shown hereon is compiled from the best available sources and CANNOT be used for surveys or land transfers of any type.

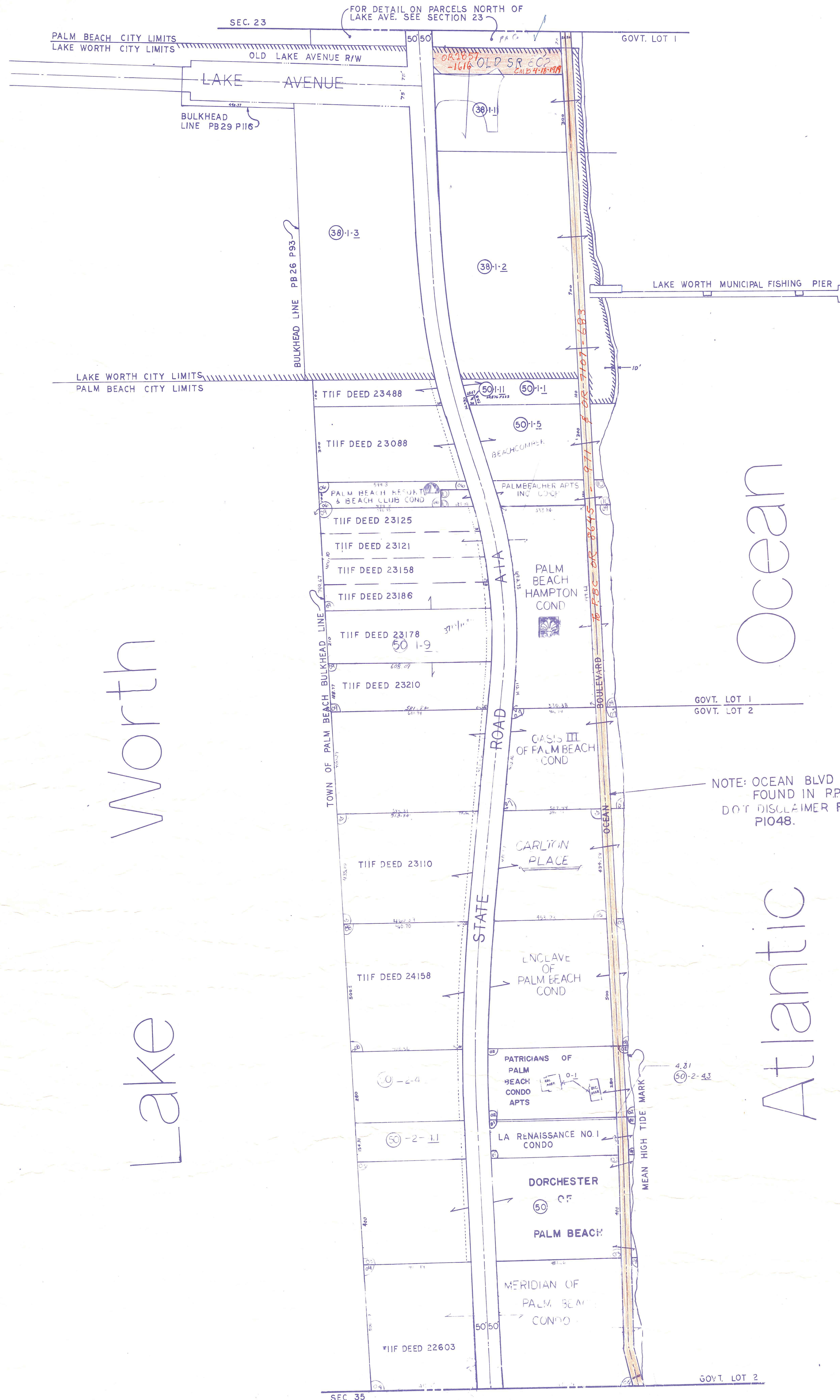
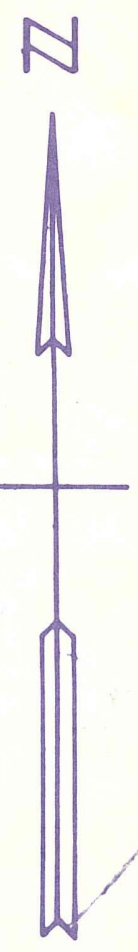
A-25

| | | | |
|--------------------|-----|---------------|---------|
| PALM BEACH COUNTY | | | |
| GARY R. NIKOLITS | | | |
| PROPERTY APPRAISER | | | |
| RGE | TWP | SEC | AERIAL |
| 43 | 44 | 26 | NO70-13 |
| SCALE | | 1:200 | |
| DRAWN BY | | OLLIS 2-17-75 | |
| UPDATED | | 12/27/00 Jmm | |

| | | | | | | | |
|----|----|----|----|----|----|----|----|
| 36 | 31 | 32 | 33 | 34 | 35 | 36 | 31 |
| 1 | 6 | 5 | 4 | 3 | 2 | 1 | 6 |
| 12 | 7 | 8 | 9 | 10 | 11 | 12 | 7 |
| 13 | 18 | 17 | 16 | 15 | 14 | 13 | 18 |
| 24 | 19 | 20 | 21 | 22 | 23 | 24 | 19 |
| 25 | 30 | 29 | 28 | 27 | 26 | 25 | 30 |
| 36 | 31 | 32 | 33 | 34 | 35 | 36 | 31 |
| 1 | 6 | 5 | 4 | 3 | 2 | 1 | 6 |

DRAWN FROM AERIAL FLOWN DECEMBER 1973

DRAWING 64-441 23725



Lake Worth

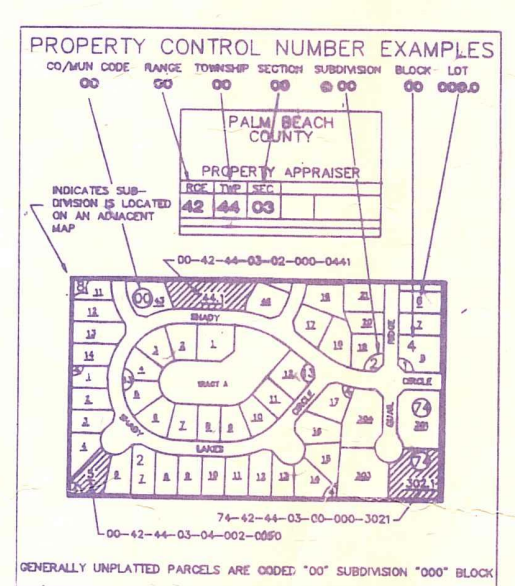
Ocean Atlantic

- 51 OLA RENAISSANCE NO.1 CONDO 50
- 52 PATRICIANS OF PALM BEACH CONDO. APTS (1978)
- 53 DORCHESTER OF PALM BEACH 50
- 54 MERIDIAN OF PALM BEACH CONDO (1982) 50
- 55 CARLTON PLACE CONDO (1983) 50
- 56 PALM BEACH RESORT & BEACH CLUB CONDO (1983) 50
- 57 CASIS III OF PALM BEACH CONDO (1984) 50
- 58 ENCLAVE OF PALM BEACH CONDO (1984) 50
- 59 PALM BEACH HAMPTON CONDO (1985) 50
- 60 PALMBEACHER APTS INC CO-OP 50

Palm Beach County (County) makes no representation or warranties whatsoever on the attached / enclosed information reflected herein pertaining to easements, rights-of-way, setback lines, reservations, agreements, and other similar matters. The information provided herein should not be relied upon by the requesting party to confirm the existence / non-existence of facts contained herein.

NOTE: LAKE WORTH IS (38)
PALM BEACH IS (50)

NOTE:
NOT TO BE REPRODUCED IN ANY FORM EXCEPT BY EXPRESS WRITTEN CONSENT FROM THE PALM BEACH COUNTY ASSESSOR.
Information shown hereon is compiled from the best available sources and CANNOT be used for surveys or land transfers of any type.



PALM BEACH COUNTY

| PROPERTY APPRAISER | | | |
|--------------------|-----|---------------|---------|
| RGE | TWP | SEC | AERIAL |
| 43 | 44 | 26 | No70-13 |
| SCALE | | 1"=200' | |
| DRAWN BY | | OLLIS 2-17-75 | |
| UPDATED | | | |

| | | | | | | | |
|----|----|----|----|----|----|----|----|
| 36 | 31 | 32 | 33 | 34 | 35 | 36 | 31 |
| 1 | 6 | 5 | 4 | 3 | 2 | 1 | 6 |
| 12 | 7 | 8 | 9 | 10 | 11 | 12 | 7 |
| 13 | 14 | 15 | 16 | 17 | 18 | 19 | 18 |
| 24 | 23 | 22 | 21 | 20 | 19 | 18 | 19 |
| 25 | 26 | 27 | 28 | 29 | 30 | 31 | 26 |
| 36 | 31 | 32 | 33 | 34 | 35 | 36 | 31 |
| 1 | 6 | 5 | 4 | 3 | 2 | 1 | 6 |