

## Department of Environmental Resources Management (ERM)

# Welcome



**Sandra Feliciano**  
Contracts & Grants  
Coordinator

561.681.3896  
[SEFeliciano@pbc.org](mailto:SEFeliciano@pbc.org)

# Agenda

- About ERM
- Goods & Services commonly procured
- Upcoming Opportunities
- Q&A



# About ERM

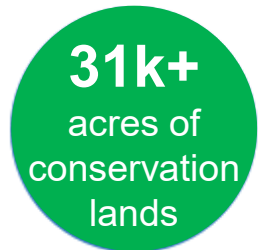


## Our Mission

ERM administers environmental programs that protect, preserve, and enhance Palm Beach County's natural resources on land and in & under water.



Department of  
Environmental  
Resources  
Management





# Beaches

- Beach and dune restoration
- Sea turtle monitoring
- Nearshore artificial reef monitoring & deployment

An aerial photograph of a large body of water, likely a bay or lagoon, during a vibrant sunset. The sun is low on the horizon, casting a golden glow across the sky and reflecting on the water's surface. In the foreground, several palm trees are silhouetted against the bright sky. A long, narrow pier extends from the right side into the water. In the middle ground, there are several large, dark, irregularly shaped floating structures or islands. In the background, a city skyline is visible under the sunset sky.

# Resource Protection

- Petroleum cleanup & inspections
- Water quality monitoring
- Seagrass monitoring



# Natural Areas

- Natural area management
- Public use facilities
- Prescribed fire/mitigation
- Wetland restoration





# Mosquito Control

- Mosquito surveillance & research
- Mosquito trapping
- Mosquito treatment

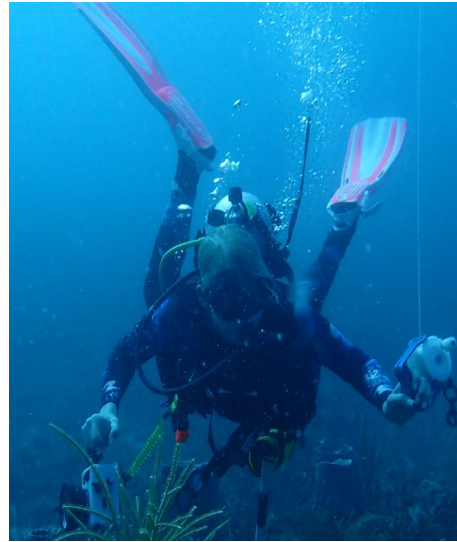




# Commonly Purchased Goods/Services



Fire Retardant Gear



Dive Gear



Personal Protective  
Equipment



Chemicals



Artificial Reef Deployment  
Equipment

# Upcoming Opportunities



- Purchase and Delivery of Larvicide & Growth Regulator-IFB (2024)
- Supply & Load of Sand, Beach & Dune, IFB (2024)



# Get Involved



Learn more by visiting  
ERM's website



Learn more by visiting  
PBC Vendor Self Service Portal

# Questions?

