



Palm Beach County  
Office of Resilience

# CLIMATE RESILIENCE

In Palm Beach County



# OO RESILION



The Office of Resilience works to ensure a thriving, equitable Palm Beach County for all while confronting a changing climate through implementing adaptation, mitigation, and sustainable initiatives.



# CLIMATE IMPACTS





# CLIMATE IMPACTS





# CLIMATE IMPACTS

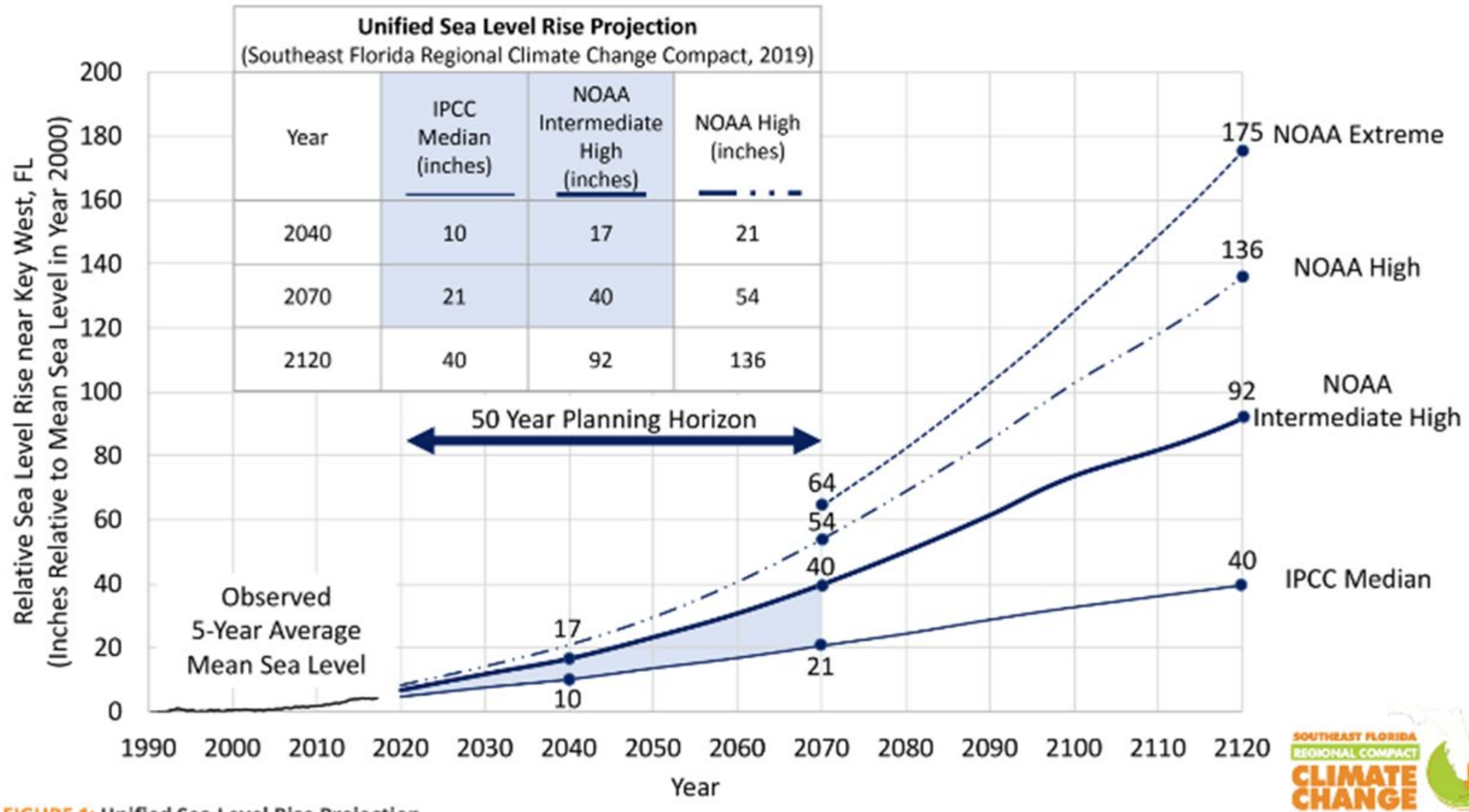


FIGURE 1: Unified Sea Level Rise Projection

# CLIMATE IMPACTS



**High Winds**



**Rainfall-Induced Flooding**



**Harmful Algal Blooms**



**Pest & Disease Outbreaks**



**Extreme Heat**



**Drought**



**Wildfire**



**Shoreline Recession**



**Tidal Flooding**



**Storm Surge**



**Groundwater Inundation**



**Saltwater Intrusion**



# OUR VALUES



## SOCIAL EQUITY

- Prioritizing “frontline communities,” i.e., people both highly exposed to climate risks and with fewer resources, capacity, safety nets or political power to respond to those risks in planning, processes, and outcomes



## ADAPTATION

- Anticipate, prepare for, and respond to acute shocks, disruptions and hazardous events or longer -term, chronic stressors related to or exacerbated by climate change



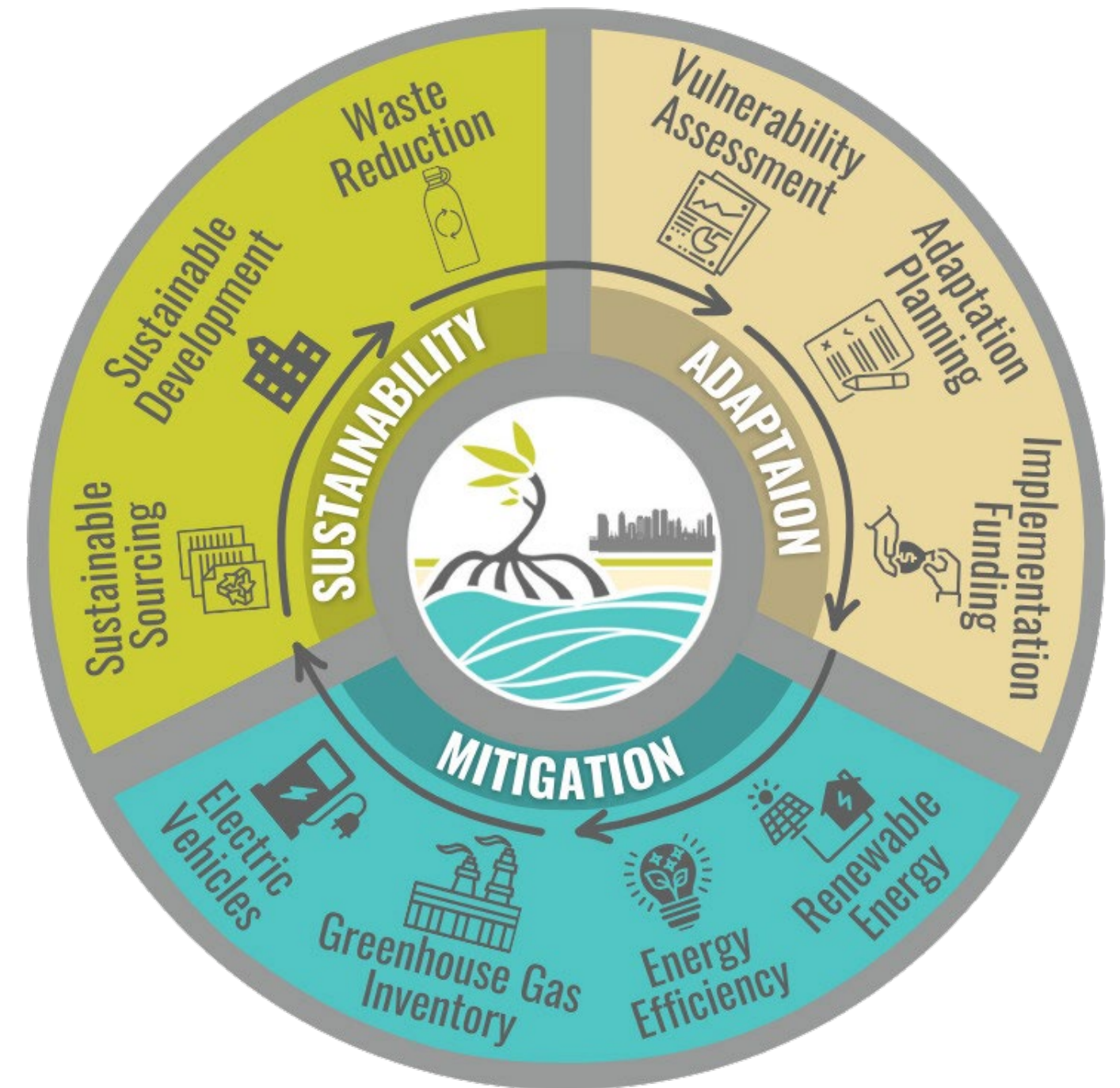
## MITIGATION

- Reducing greenhouse gas emissions to lessen the impacts of climate change



## SUSTAINABILITY

- Create solutions that serve the environment and community and promote a better, healthier, and cleaner future



# METHODS



Consultant, resource hub, liaison, and facilitator with County stakeholders to develop, plan, manage, supervise, and implement resilience and sustainability projects to better serve the Palm Beach County community and mitigate climate hazards.



## FUNDING

OOR helps the County and other stakeholders identify funding opportunities, coordinates grant applications, and directly applies for the ever-increasing number of grants that fund resiliency and sustainability initiatives



## COLLABORATION

OOR collaborates and liaises with County Departments, local jurisdictions, and community members.



## INNOVATION

OOR constantly researches best practices, develops pilot projects, and shares cutting edge technology with relevant stakeholders. OOR prioritizes cost-effective initiatives that build community resiliency and protect natural resources.



## STRATEGY

OOR participates in four Strategic Planning and Performance Management's Cross-Departmental Teams (CDT): Infrastructure, Grants, Environmental Protection, and Economic Development.



# KEY PARTNERS



## CLIMATE COMPACT

- Ratified January 2010
- Palm Beach, Broward, Miami -Dade, and Monroe Counties (109 cities, 2 tribes, 6 million people)
- Collaborate on on regional climate solutions and share knowledge.
- CLIMATE SUMMIT 2025

SOUTHEAST  
FLORIDA REGIONAL  
**CLIMATE  
CHANGE  
COMPACT**





# OOORROJECTS



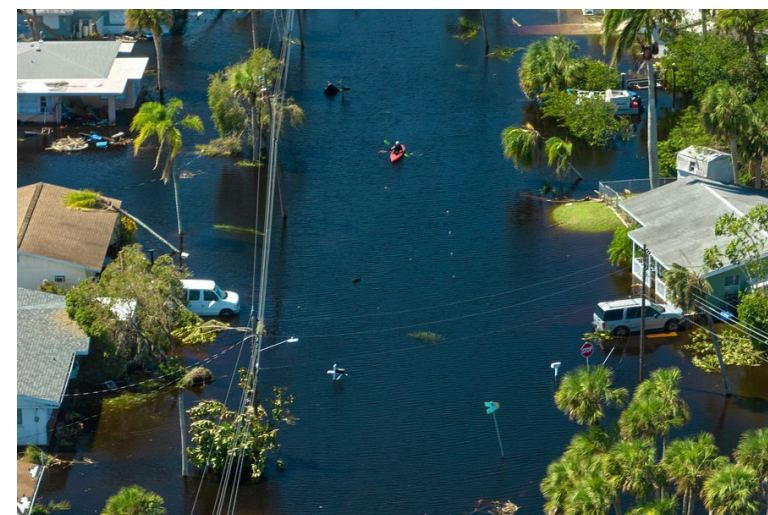
## VA+RAP

### VULNERABILITY ASSESSMENT (VA)

The VA will assess the County's unincorporated area and western municipalities and County assets owned or maintained in other municipalities to measure potential climate threat impacts and identify the levels at which the assets, including people, property, and natural resources, may be affected.

### RESILIENCE ACTION PLAN (RAP)

Will provide County operations and County -wide community resilience targets, a strategy to achieve these targets, and a public engagement program that ensures social equity in evaluating, prioritizing, and implementing solutions. RAP will examine current and future conditions that impact the sustainability and resilience of PBC and the community.





# COORROJECTS



## VA+RAP DELIVERABLES

CLIMATE RISK ASSESSMENT

- Exposure, sensitivity, and risk

RESILIENCE ACTION PLAN

- Adaptation & mitigation strategies

GIS MAP TOOL AND DATA DASHBOARD

- Flooding and sea level rise impacts

PRIORITIZED PROJECT LIST

- 30 representative projects

IDENTIFIED STRATEGIES

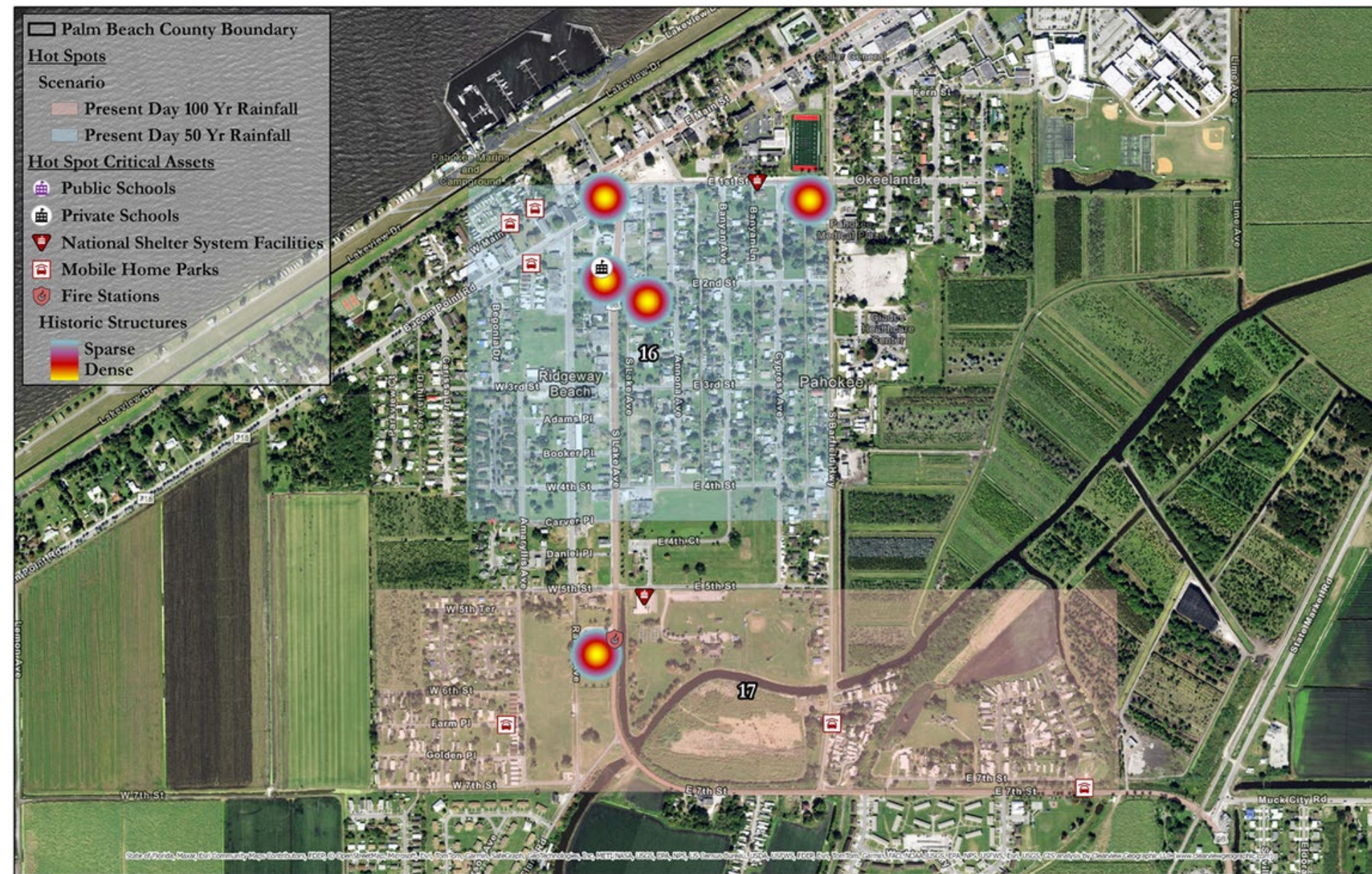
- Costs, timelines, social equity



# OOORROJECTS



## “HOT SPOTS”

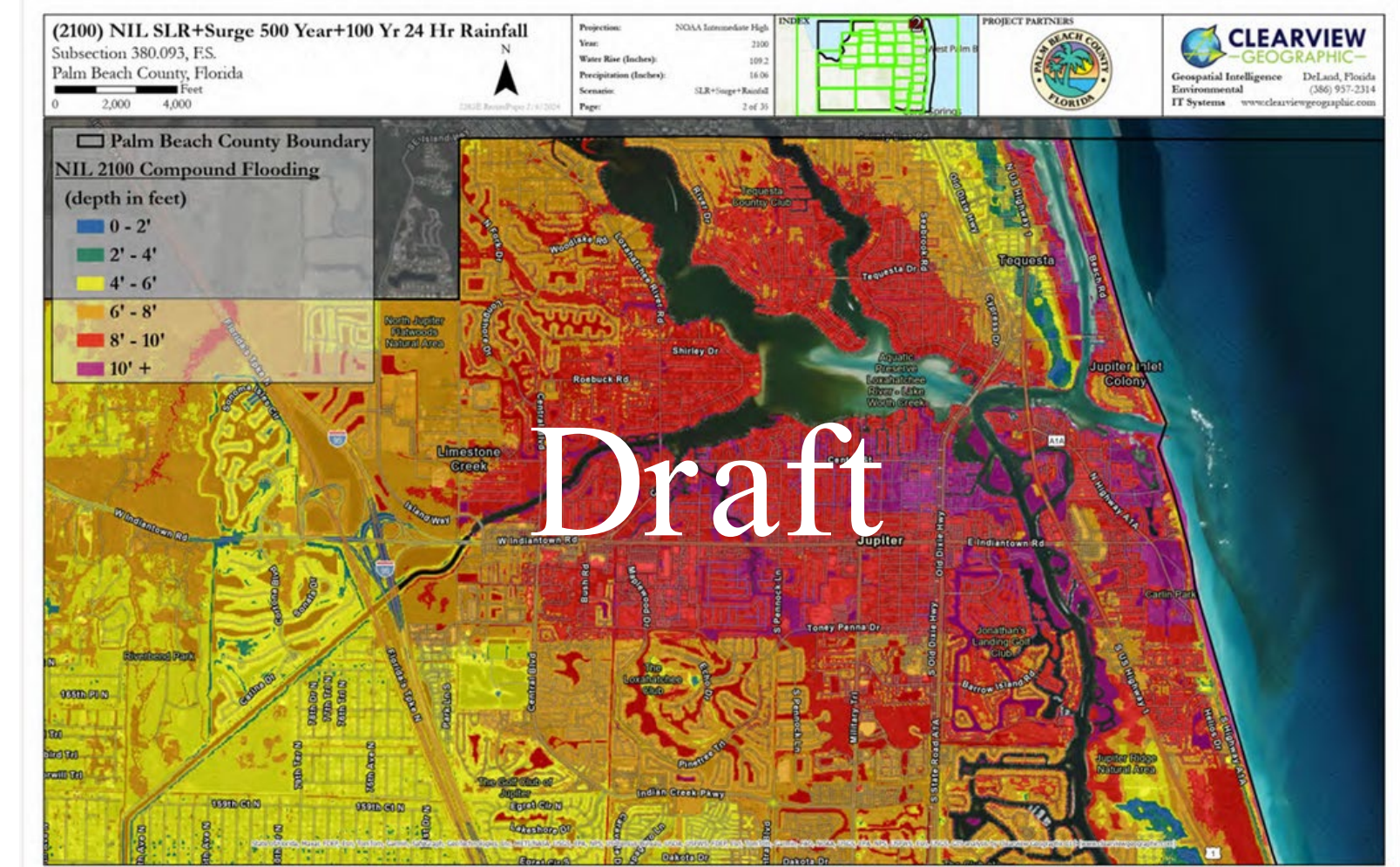
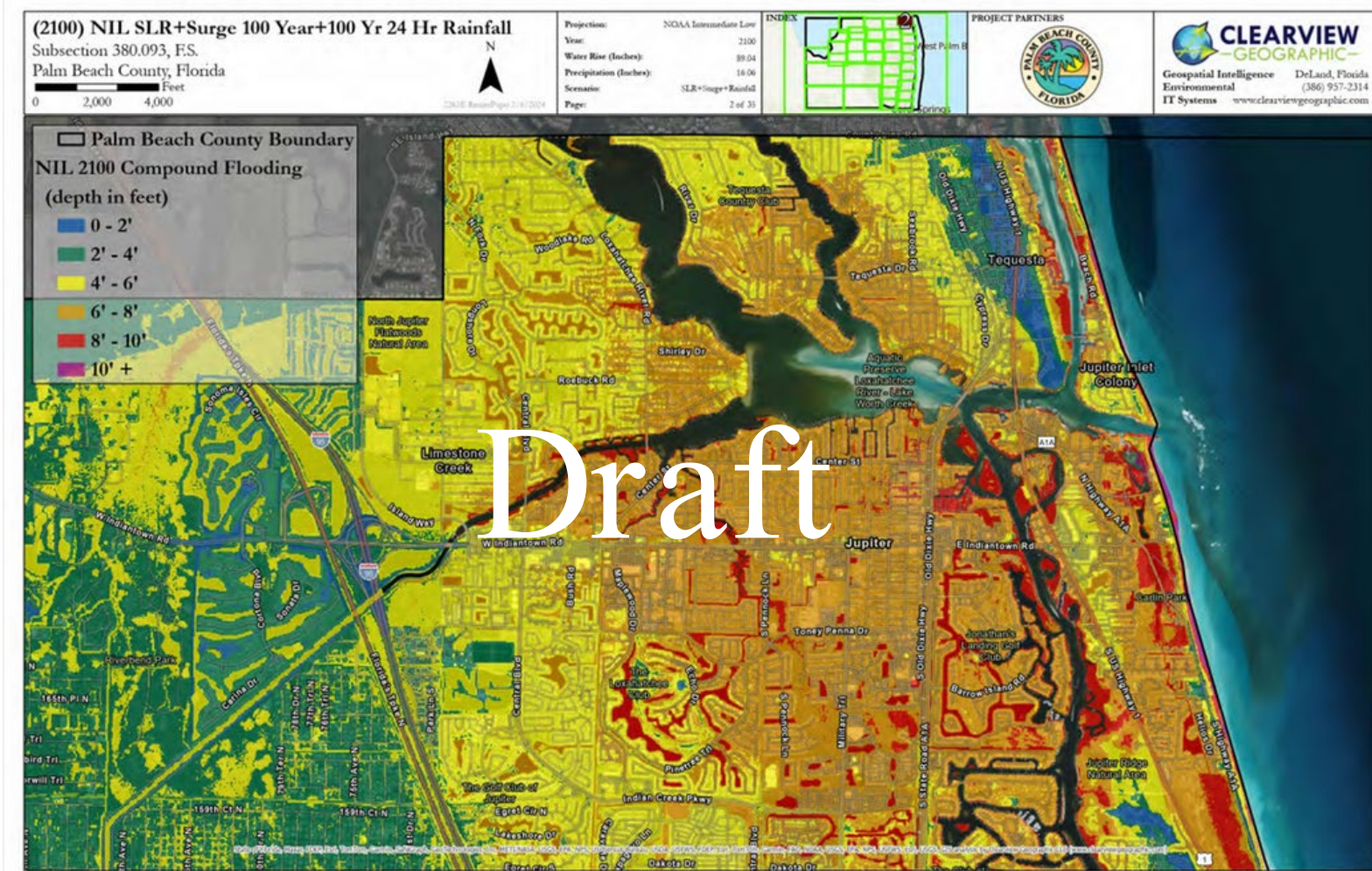




# OOORROJECTS



## SLR + SURGE + RAINFALL





# OUR PROJECTS



## VA+RAP TIMELINE





# OO RROJECTS



## RESILIENT COUNTY CAPITAL IMPROVEMENT PROJECTS

- All County Capital Construction Projects have to include resiliency and sustainability principles in the PLANNING process and DISCLOSE resiliency and sustainability initiatives included in design.
- Use the SEFL Regional Climate Change Compact Unified Sea Level Rise Projection
- Complete an Office of Resilience Checklist
- Demonstrate how a County Building complies with State Green Building Statute F.S. 255.2575 by providing a completed green building scorecard.



# OO PROJECTS



## RESILIENT COUNTY CAPITAL IMPROVEMENT PROJECTS

### 1. Sea Level Rise and Flooding

**How will this project adapt to rising sea levels, flooding, and storm surges?**

- Build on partially elevated areas
- Check valves or non-return valves
- Elevated flood wall or flood gate
- Flood barriers (passive or active)
- Flood-damage resistant materials
- Living shoreline
- Raising land
- Reduced paved surfaces
- Utility elevation
- Foundation flood vents
- Elevated finished first floor
- Relocate structure
- Dune restoration or beach nourishment
- Wetlands restoration or retention pond
- Floodable park or water square
- Increased plantings and other nature-based infrastructure





## RESILIENT COUNTY CAPITAL IMPROVEMENT PROJECTS

1. Greenhouse Gas Emissions Reduction Strategies (renewable energy, energy efficiency, transportation strategies, land use strategies)

### How will the project reduce greenhouse gas emissions?

- On-site renewable energy (explain) Click or tap here to enter text.
- Off-site renewable energy (explain) Click or tap here to enter text.
- Energy efficiency measures Click or tap here to enter text.
- Electric vehicle charging infrastructure
- Building-level energy metering (to allow monitoring by FDO/OOR for anomalous performance)
- Commissioning and verification
- Site access to transit
- Site access to retail, medical, grocery, employment centers, and other uses that promote urban density
- Bicycle facilities
- Pedestrian facilities, such as sidewalks and crosswalks
- N/A (explain) Click or tap here to enter text.
- Other (explain) Click or tap here to enter text.

**How is this project exceeding code requirements for reducing greenhouse gas emissions, if applicable?**

Click or tap here to enter text.



## RESILIENT COUNTY CAPITAL IMPROVEMENT PROJECTS

### VIII. Green Building Statute Scorecard – For New or Substantially Improved<sup>8</sup> County Buildings

[Florida Statute 255.2575](#) requires County buildings be constructed to comply with a sustainable building rating system or a national model green code. This does NOT require the project to pursue the certification or register the project.

**With which of the following sustainable building rating system or a national model green code does your project comply?**

- Leadership in Energy and Environmental Design (LEED) v4.1
- Florida Green Building Coalition
- National Green Building Standard
- Enterprise Green Communities
- International Living Future's Living Building Challenge
- Green Building Initiative's Green Globes rating system
- International Green Construction Code
- Other (explain) [Click or tap here to enter text.](#)
- N/A because the project is not a County building

**For all buildings, you must provide documentation of how the building would comply with the green building designation. Please send the Green Building Statute Scorecard to the Office of Resilience as an attachment along with this checklist.**



# FOLLOW US ON



Facebook &

Instagram

LinkedIn



@ResilientPBC



@Palm Beach  
County - Office of  
Resilience



SIGN UP FOR OUR  
MONTHLY NEWSLETTER  
HERE!

