

PBSO

Forensic Sciences & Technology Facility



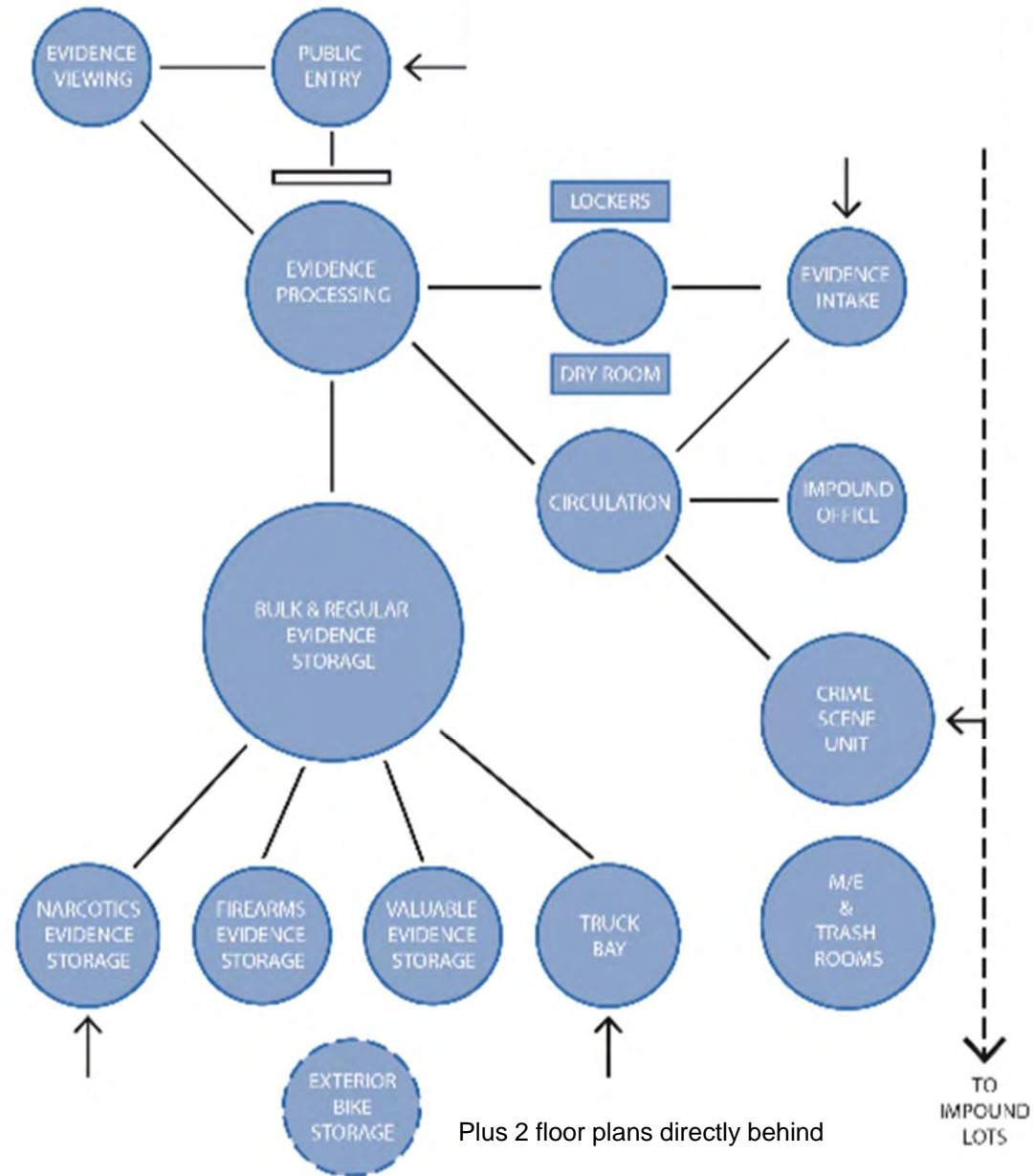


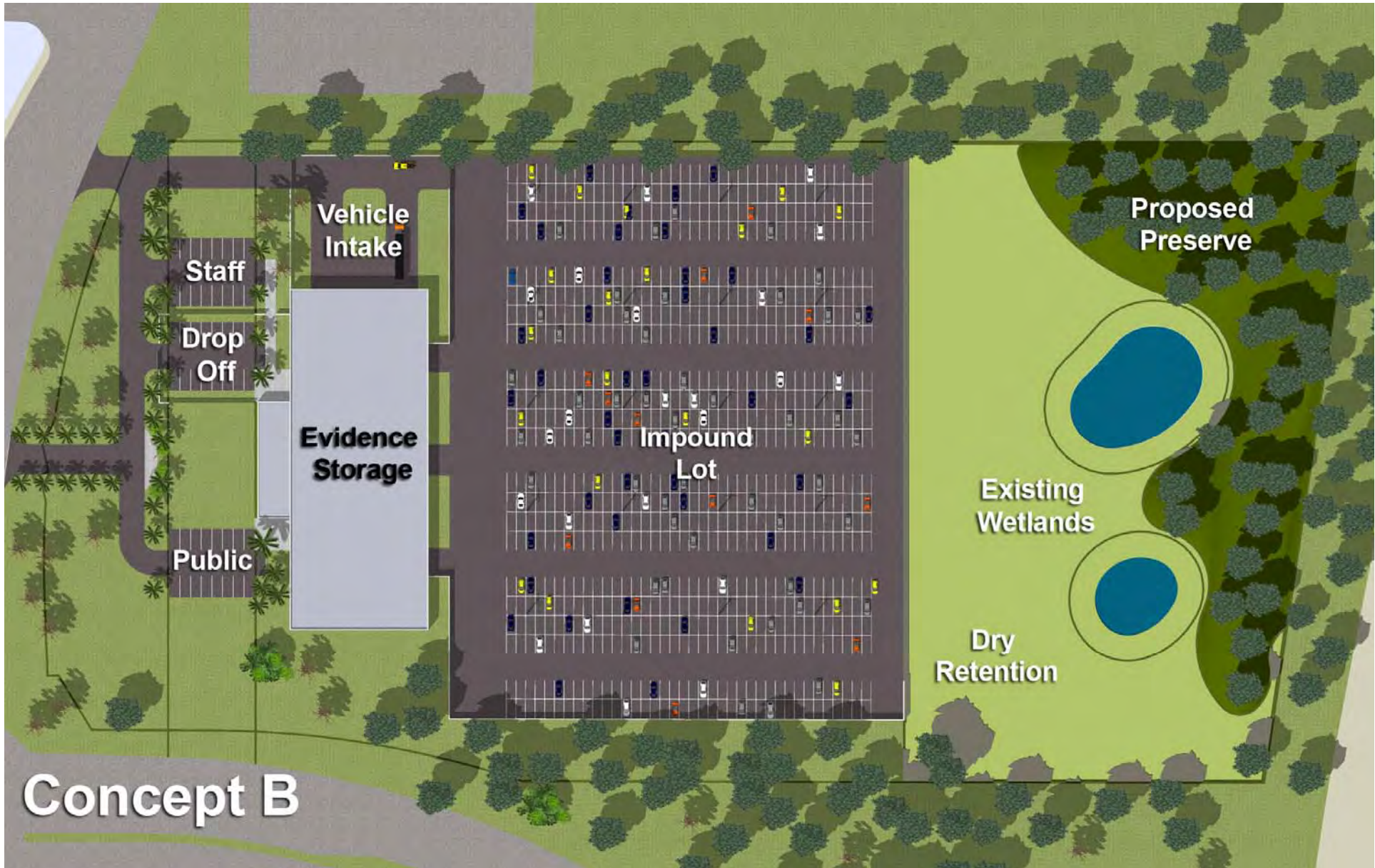
PROPOSED SITE
PISO EVIDENCE FACILITY
15 ACRES

GUN CLUB ROAD

CONGRESS AVENUE

PBSO EVIDENCE & IMPOUND FACILITY RELATIONSHIP DIAGRAM





Vehicle Intake

Staff

Drop Off

Evidence Storage

Public

Impound Lot

Proposed Preserve

Existing Wetlands

Dry Retention

Concept B

DEVIATION REQUESTS		
DEVIATION	DESCRIPTION	REASON
D1	TABLE 7.2.2.1 (2) PAVING MATERIAL, FINISH, AND FINISHING REQUIREMENTS	TO PROVIDE A FINISH FOR THE DRIVEWAY AND SIDEWALKS THAT IS DIFFERENT FROM THE FINISH SPECIFIED IN THE TABLE.
D2	TABLE 7.2.2.1 (2) (A) AND (B) LANDSCAPE PLANTINGS	TO PROVIDE A FINISH FOR THE DRIVEWAY AND SIDEWALKS THAT IS DIFFERENT FROM THE FINISH SPECIFIED IN THE TABLE.
D3	TABLE 7.2.2.1 (2) (A) AND (B) LANDSCAPE PLANTINGS	TO PROVIDE A FINISH FOR THE DRIVEWAY AND SIDEWALKS THAT IS DIFFERENT FROM THE FINISH SPECIFIED IN THE TABLE.
D4	TABLE 7.2.2.1 (2) (A) AND (B) LANDSCAPE PLANTINGS	TO PROVIDE A FINISH FOR THE DRIVEWAY AND SIDEWALKS THAT IS DIFFERENT FROM THE FINISH SPECIFIED IN THE TABLE.

ARCHITECTURAL SITE NOTES	
1.	SEE ALL LANDSCAPE & PLANTING MATERIALS FOR FINISHES AND FINISHING FOR ALL PLANTING. SEE ALL FINISHING FOR ALL PLANTING.
2.	SEE ALL LANDSCAPE & PLANTING MATERIALS FOR FINISHES AND FINISHING FOR ALL PLANTING. SEE ALL FINISHING FOR ALL PLANTING.
3.	SEE ALL LANDSCAPE & PLANTING MATERIALS FOR FINISHES AND FINISHING FOR ALL PLANTING. SEE ALL FINISHING FOR ALL PLANTING.
4.	SEE ALL LANDSCAPE & PLANTING MATERIALS FOR FINISHES AND FINISHING FOR ALL PLANTING. SEE ALL FINISHING FOR ALL PLANTING.
5.	SEE ALL LANDSCAPE & PLANTING MATERIALS FOR FINISHES AND FINISHING FOR ALL PLANTING. SEE ALL FINISHING FOR ALL PLANTING.
6.	SEE ALL LANDSCAPE & PLANTING MATERIALS FOR FINISHES AND FINISHING FOR ALL PLANTING. SEE ALL FINISHING FOR ALL PLANTING.
7.	SEE ALL LANDSCAPE & PLANTING MATERIALS FOR FINISHES AND FINISHING FOR ALL PLANTING. SEE ALL FINISHING FOR ALL PLANTING.
8.	SEE ALL LANDSCAPE & PLANTING MATERIALS FOR FINISHES AND FINISHING FOR ALL PLANTING. SEE ALL FINISHING FOR ALL PLANTING.
9.	SEE ALL LANDSCAPE & PLANTING MATERIALS FOR FINISHES AND FINISHING FOR ALL PLANTING. SEE ALL FINISHING FOR ALL PLANTING.
10.	SEE ALL LANDSCAPE & PLANTING MATERIALS FOR FINISHES AND FINISHING FOR ALL PLANTING. SEE ALL FINISHING FOR ALL PLANTING.

PARKING CALCULATIONS		
REQUIRE 1	REQUIRE 2	REQUIRE 3
1. 1.0000	0.25	0.25
2. 1.0000	0.25	0.25
3. 1.0000	0.25	0.25
4. 1.0000	0.25	0.25
5. 1.0000	0.25	0.25
6. 1.0000	0.25	0.25
7. 1.0000	0.25	0.25
8. 1.0000	0.25	0.25
9. 1.0000	0.25	0.25
10. 1.0000	0.25	0.25

Palm Beach County Sheriff's Office Forensic Sciences and Technology Facility
 Gun Club Road
 West Palm Beach, Florida 33401

Palm Beach County Capital Improvements Division
 2033 Vista Parkway
 West Palm Beach, Florida 33411

LEO A DALY
 ARCHITECTS
 1400 West Palm Beach Blvd., Suite 200
 West Palm Beach, Florida 33411
 Tel: 561.832.2111 Fax: 561.832.2100

- CONSULTANTS**
- Civil Design, Inc.**
100 E. Palm Beach Blvd., Suite 200
West Palm Beach, Florida 33411
Tel: 561.832.2111
 - Bliss & Myrberg, Inc.**
100 E. Palm Beach Blvd., Suite 200
West Palm Beach, Florida 33411
Tel: 561.832.2111
 - Johnston, Levinson, Roger, Davis, Inc.**
100 E. Palm Beach Blvd., Suite 200
West Palm Beach, Florida 33411
Tel: 561.832.2111
 - Collier & Heating**
100 E. Palm Beach Blvd., Suite 200
West Palm Beach, Florida 33411
Tel: 561.832.2111
 - Duford Goff & Associates, Inc.**
100 E. Palm Beach Blvd., Suite 200
West Palm Beach, Florida 33411
Tel: 561.832.2111



REVISIONS

No.	Description	Date

FILE LOG

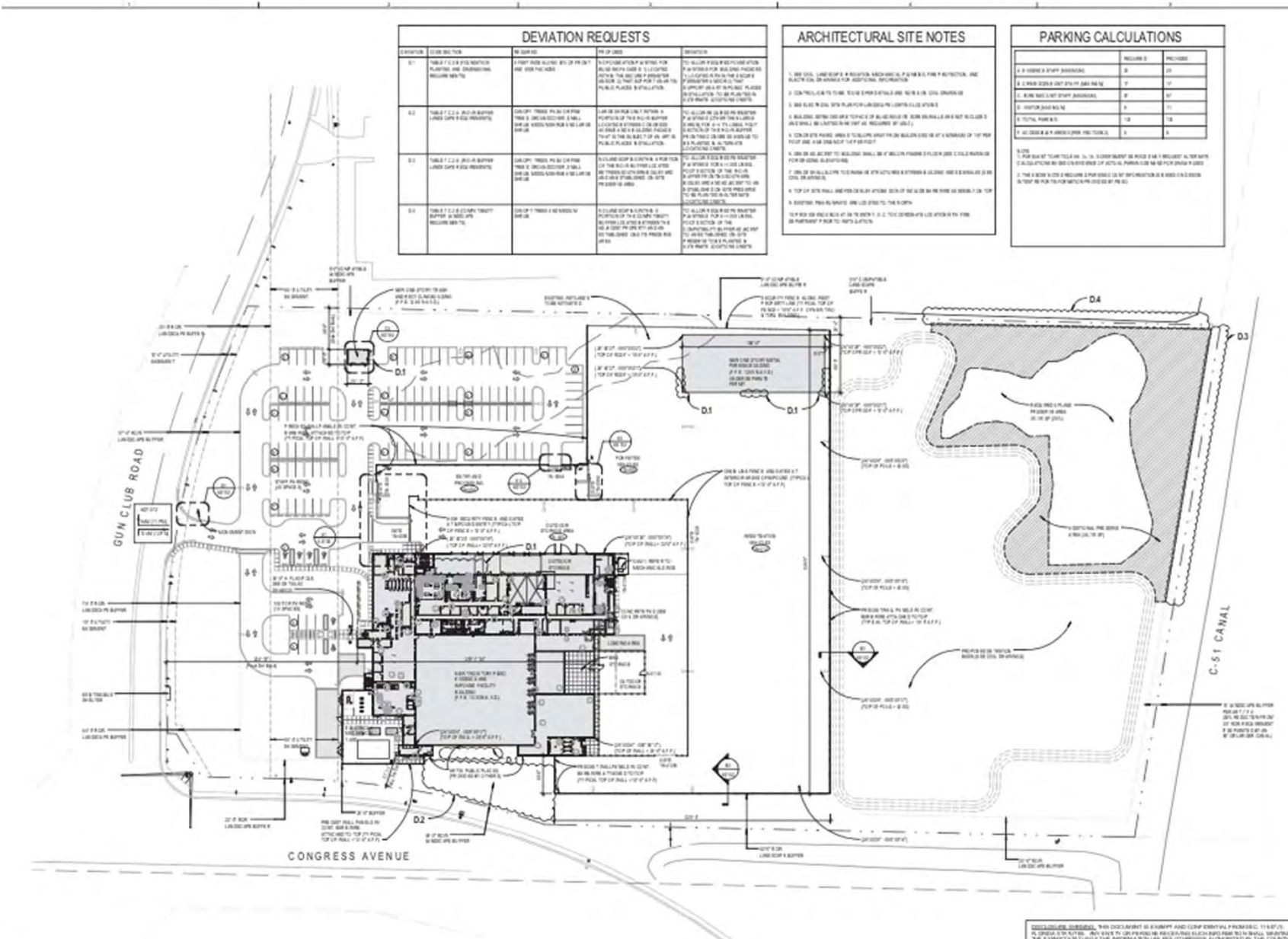
Date	Description

PERMIT SUBMITTAL
 PAUL M. TWITTY
 ARCHITECT

0311 120118
 Project No. 201-0008-030
 Issue Date: 07/11/2018

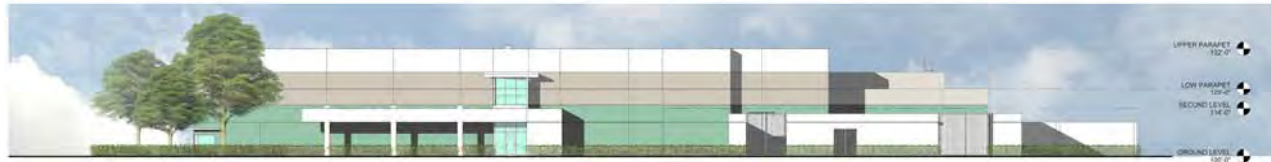
SITE PLAN

AS101



(A) SITE PLAN

DISCLAIMER: THIS DOCUMENT IS PREPARED BY THE ARCHITECT AND IS NOT TO BE USED FOR ANY OTHER PURPOSE. THE ARCHITECT ASSUMES NO LIABILITY FOR ANY DAMAGE OR INJURY TO PERSONS OR PROPERTY ARISING FROM THE USE OF THIS DOCUMENT. THE ARCHITECT'S LIABILITY IS LIMITED TO THE DESIGN AND CONSTRUCTION OF THE PROJECT. THE ARCHITECT'S LIABILITY IS LIMITED TO THE DESIGN AND CONSTRUCTION OF THE PROJECT. THE ARCHITECT'S LIABILITY IS LIMITED TO THE DESIGN AND CONSTRUCTION OF THE PROJECT.



D2 SOUTH ELEVATION
SCALE 1/8" = 1'-0"



C2 NORTH ELEVATION
SCALE 1/8" = 1'-0"



B2 WEST ELEVATION
SCALE 1/8" = 1'-0"



A2 EAST ELEVATION
SCALE 1/8" = 1'-0"

Palm Beach County Sheriff's Office
Forensic Sciences and Technology Facility
January 23, 2018

LEO A DALY





fantasia anthropoda

