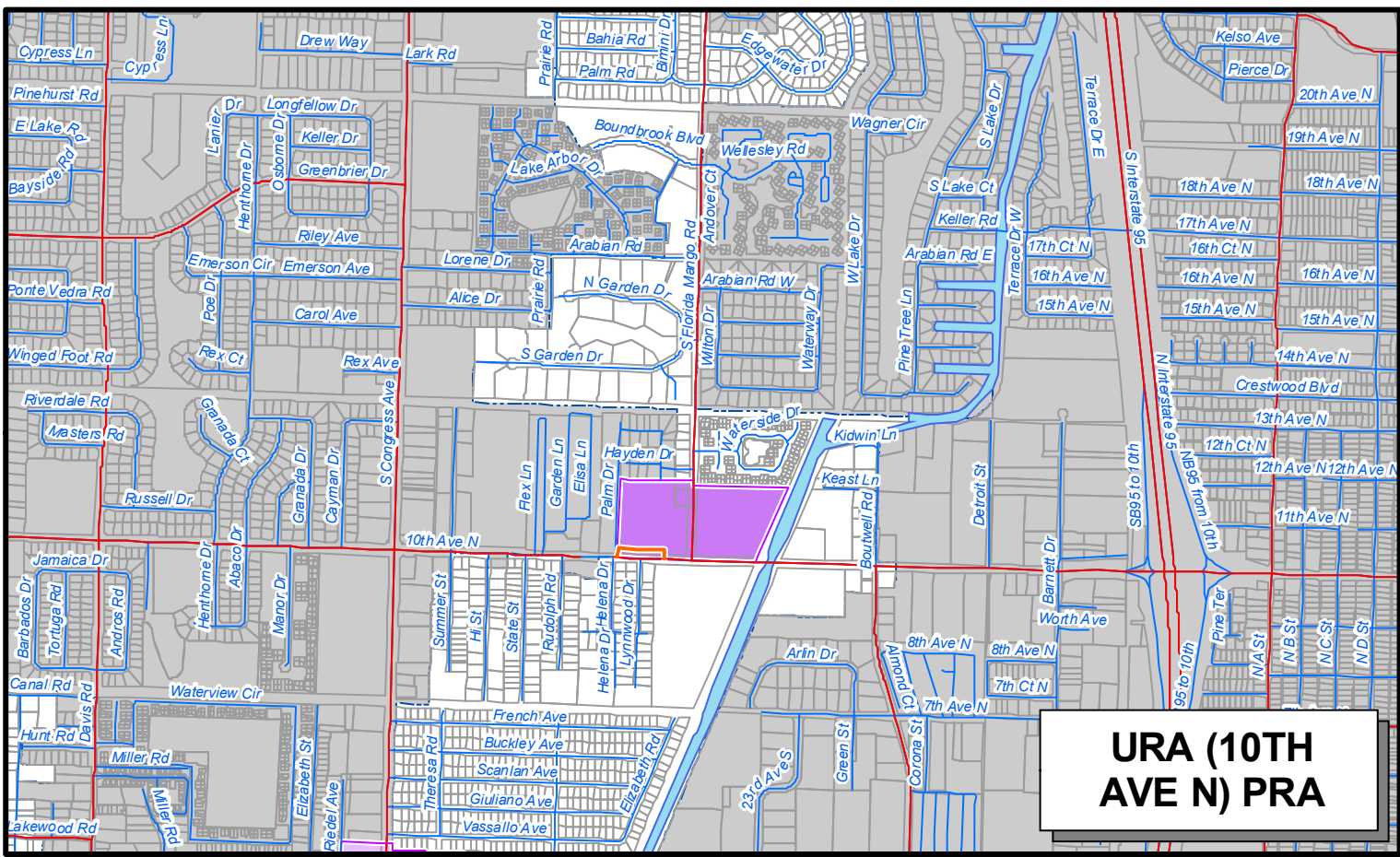
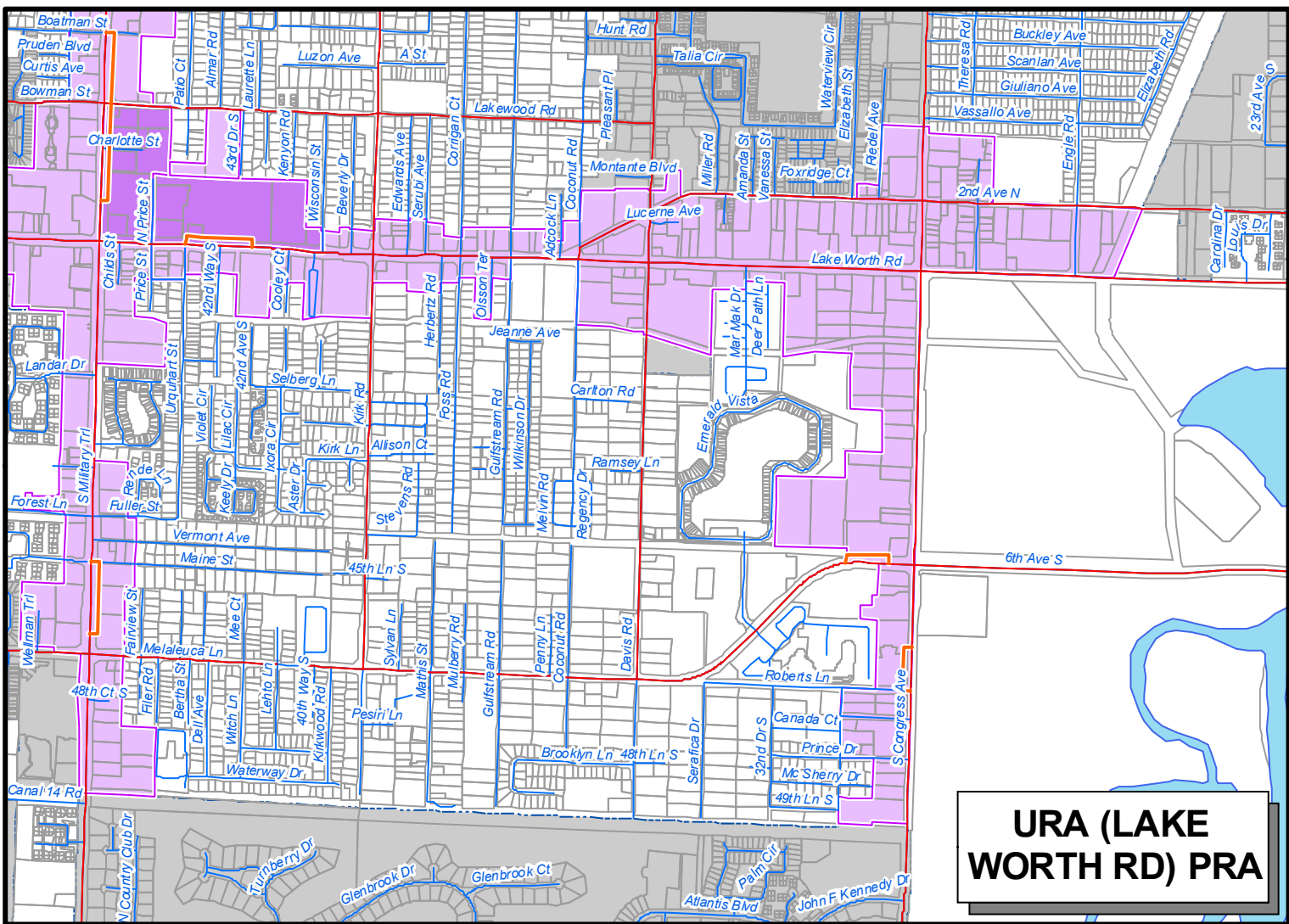


URA (SOUTH MILITARY) PRA









URA (10TH AVE N) PRA



URA (LAKE WORTH RD) PRA

**MAP LU 9.2
URBAN REDEVELOPMENT
AREA REGULATING PLAN II**

-  **URBAN INFILL**
(Predominately Residential With Encouraged Ground Floor Non-Residential Uses; 2 - 4 Story Buildings)
-  **URBAN CENTER**
(Balance Of Uses Including Residential, Retail, & Office Uses; 2 - 6 Story Buildings)
-  **Interstate 95**
-  **Frontage Roads**
-  **Major Roads**
-  **Minor Roads**

SOURCES: PBC Planning Division
Notes: Round 09-2, Ord. 2009-046



**PALM BEACH COUNTY
COMPREHENSIVE PLAN
MAP SERIES**



500 0 500 1,000 1,500 2,000 Feet

Effective Date: 11/19/2009
Filename: N:\Map Series\MX Ds Adopted
Contact: PBC Planning Dept.