

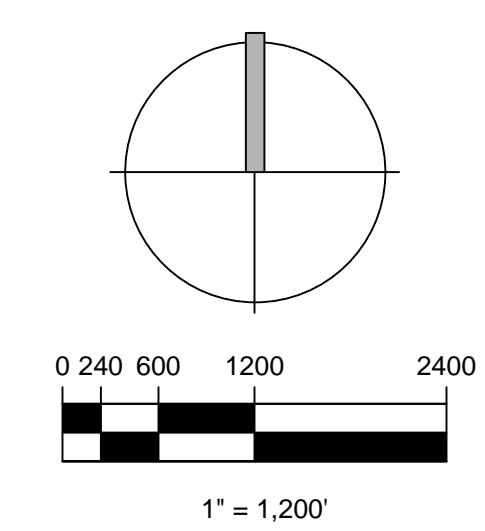
**Consultants:**  
**CIVIL ENGINEER**  
 GLH Engineering, LLC  
 1600 Sawgrass Corporate Pkwy Suite 400  
 Sunrise, FL 33323  
 954-753-1730  
**SURVEYOR**  
 Sand and Hills Survey, Inc.  
 8461 Lake Worth Road, Suite 410  
 Lake Worth, FL 33467  
 (561) 209-6048  
**TRAFFIC ENGINEER**  
 Simmons and White  
 2581 Metrocentre Blvd, Suite 3  
 West Palm Beach, FL 33407  
 (561) 478-7848  
**PLANNERS**  
 Urban Design Kilday Studios  
 610 Clematis Street, Suite CU02  
 West Palm Beach, FL 33401  
 (561) 366-1100

**Project:**  
**INDIAN TRAILS GROVE - PUD**

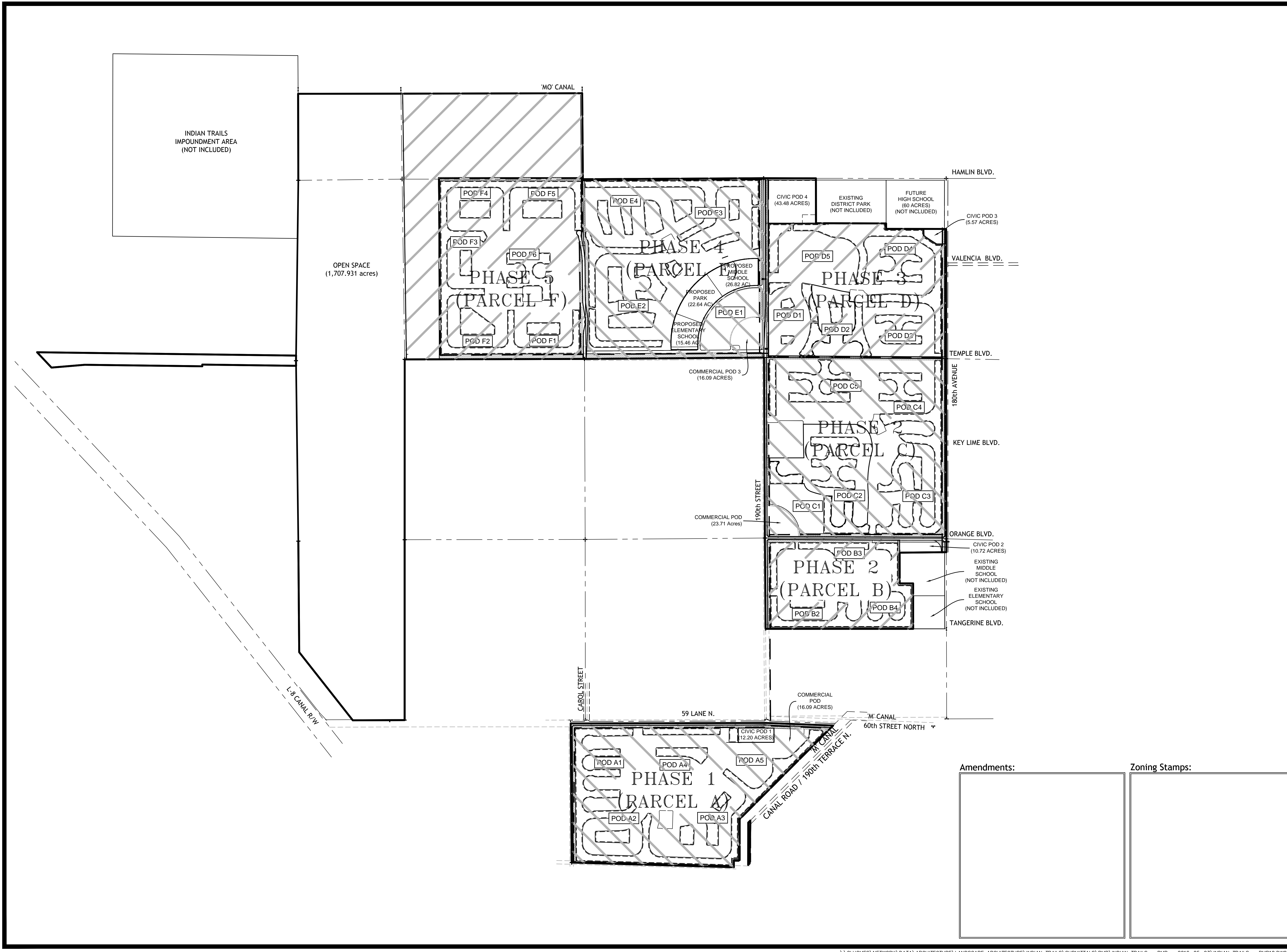
Palm Beach County, Florida  
**Sheet title:**  
**PRELIMINARY Phasing Plan**

**Date:**  
**2015-07-15**

**Revisions:**  
 2015-09-28 Resubmittal  
 2016-01-25 Resubmittal  
 2016-02-22 Resubmittal  
 2016-05-23 Resubmittal



**Sheet number:**  
**PMP-11**



**Amendments:**

**Zoning Stamps:**