

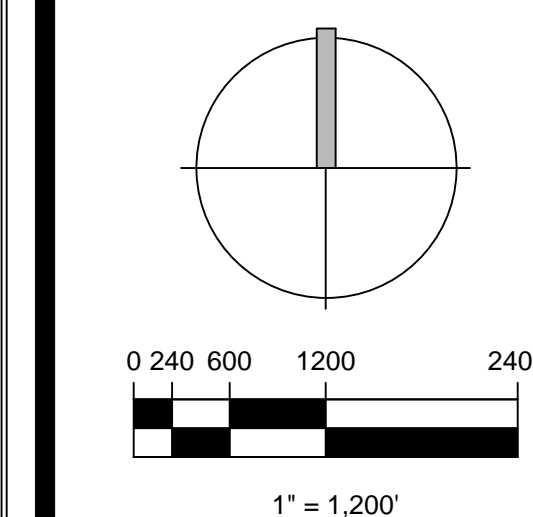
Consultants:
CIVIL ENGINEER
 GLH Engineering, LLC
 1600 Sawgrass Corporate Pkwy Suite 400
 Sunrise, FL 33323
 954-753-1730
SURVEYOR
 Sand and Hills Survey, Inc.
 8461 Lake Worth Road, Suite 410
 Lake Worth, FL 33467
 (561) 209-6048
TRAFFIC ENGINEER
 Simmons and White
 2581 Metrocentre Blvd, Suite 3
 West Palm Beach, FL 33407
 (561) 478-7848
PLANNERS
 Urban Design Kilday Studios
 610 Clematis Street, Suite CU02
 West Palm Beach, FL 33401
 (561) 366-1100

Project:
INDIAN TRAILS GROVE - PUD

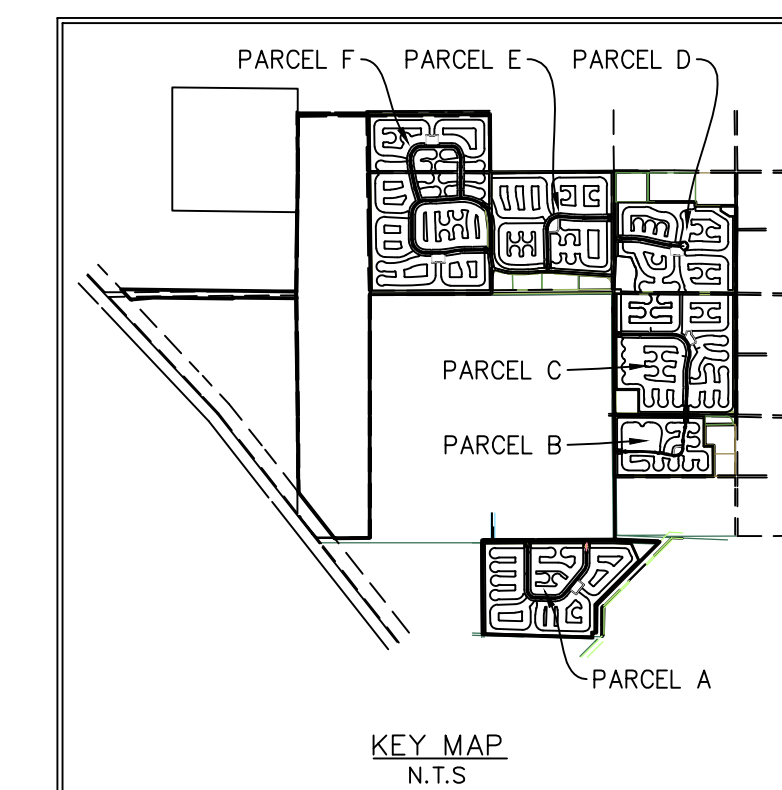
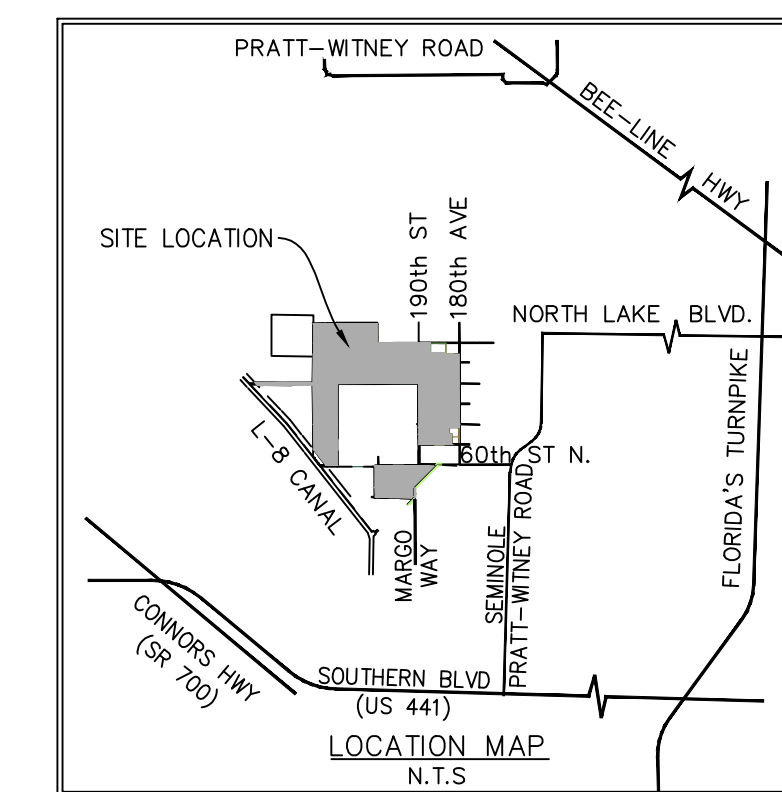
Palm Beach County, Florida
 Sheet title:
PRELIMINARY Regulating Plan
 Civic - Radius

Date:
2016-05-23

Revisions:
 2016-05-23 Resubmittal



Sheet number:
PRP-12



Parcels	CIVIC	
	Units within 1/4 mile of Civic	Units within 1/2 mile of Civic
Parcel A	160	358
Parcel B	39	151
Parcel C	54	258
Parcel D	270	613
Parcel E	513	778
Parcel F	0	0
Total	1036	2158



Amendments:

Zoning Stamps: