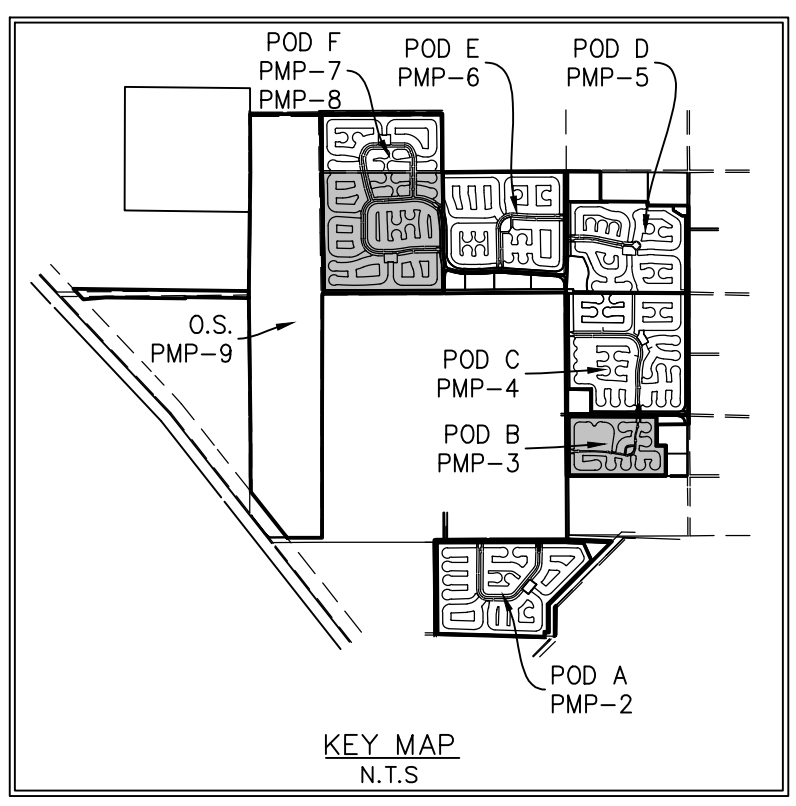
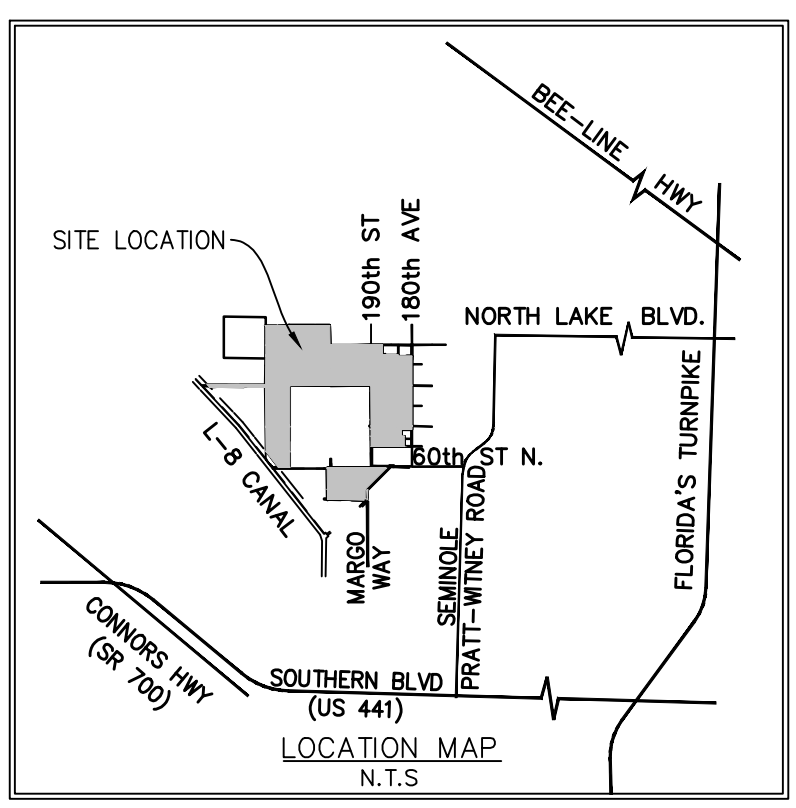
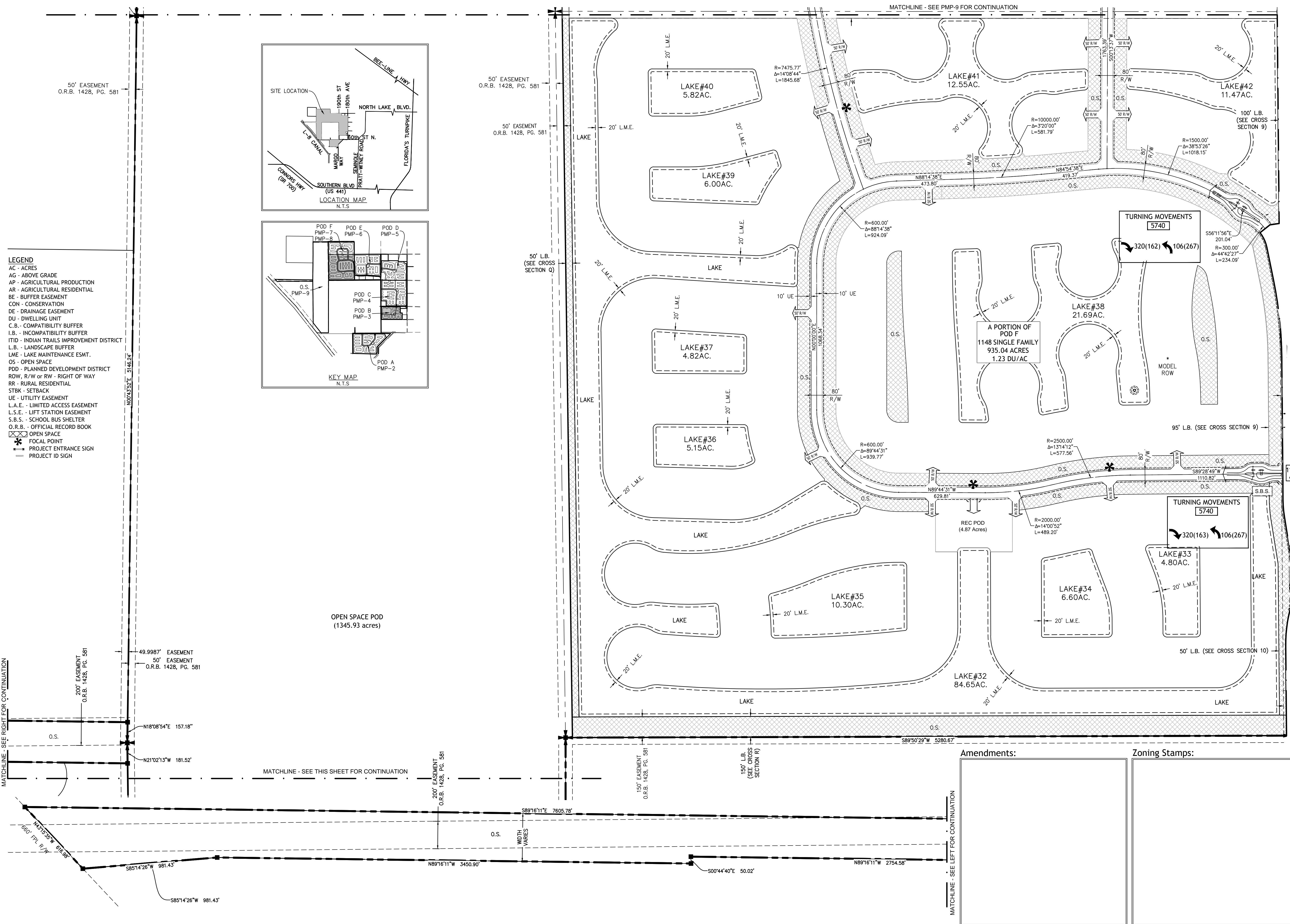


- LEGEND**
- AC - ACRES
  - AG - ABOVE GRADE
  - AP - AGRICULTURAL PRODUCTION
  - AR - AGRICULTURAL RESIDENTIAL
  - BE - BUFFER EASEMENT
  - CON - CONSERVATION
  - DE - DRAINAGE EASEMENT
  - DU - DWELLING UNIT
  - C.B. - COMPATIBILITY BUFFER
  - I.B. - INCOMPATIBILITY BUFFER
  - ITID - INDIAN TRAILS IMPROVEMENT DISTRICT
  - L.B. - LANDSCAPE BUFFER
  - LME - LAKE MAINTENANCE ESMT.
  - OS - OPEN SPACE
  - PDD - PLANNED DEVELOPMENT DISTRICT
  - ROW, R/W or RW - RIGHT OF WAY
  - RR - RURAL RESIDENTIAL
  - STBK - SETBACK
  - UE - UTILITY EASEMENT
  - L.A.E. - LIMITED ACCESS EASEMENT
  - L.S.E. - LIFT STATION EASEMENT
  - S.B.S. - SCHOOL BUS SHELTER
  - O.R.B. - OFFICIAL RECORD BOOK
  - ☒ OPEN SPACE
  - ✱ FOCAL POINT
  - PROJECT ENTRANCE SIGN
  - PROJECT ID SIGN



OPEN SPACE POD  
(1345.93 acres)



**PALM BEACH WEST ASSOCIATES I, LLLP**  
 1600 SAWGRASS CORPORATE PKWY  
 SUITE 400  
 SUNRISE, FLORIDA 33323  
 954-753-1730

**Consultants:**

**CIVIL ENGINEER**  
 GLH Engineering, LLC  
 1600 Sawgrass Corporate Pkwy  
 Suite 400  
 Sunrise, FL 33323  
 954-753-1730

**SURVEYOR**  
 Sand and Hills Survey, Inc.  
 8461 Lake Worth Road, Suite 410  
 Lake Worth, FL 33467  
 (561) 209-6048

**TRAFFIC ENGINEER**  
 Simmons and White  
 2581 Metrocentre Blvd, Suite 3  
 West Palm Beach, FL 33407  
 (561) 478-7848

**PLANNERS**  
 Urban Design Kilday Studios  
 610 Clematis Street, Suite CU02  
 West Palm Beach, FL 33401  
 (561) 366-1100

**Project:**  
**INDIAN TRAILS GROVE - PUD**

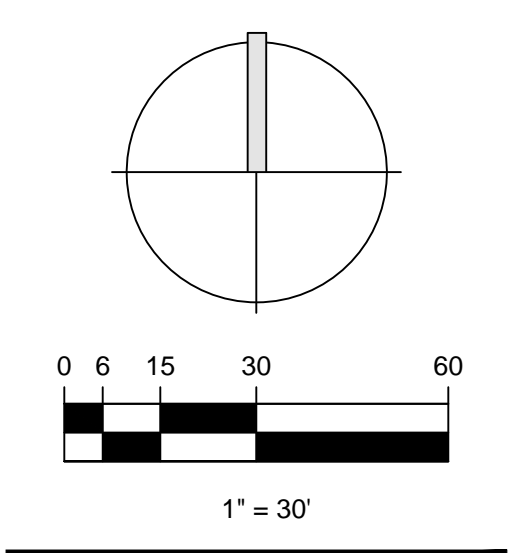
Palm Beach County, Florida  
 Sheet title:  
**PRELIMINARY Master Plan - Pod F**

**Date:**  
 2015-07-15

**Revisions:**  
 2015-09-28 Resubmittal

**Amendments:**

**Zoning Stamps:**



Sheet number:  
**PMP-8**