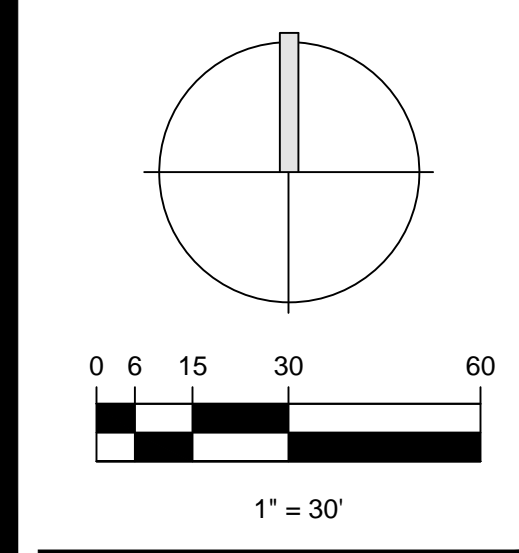


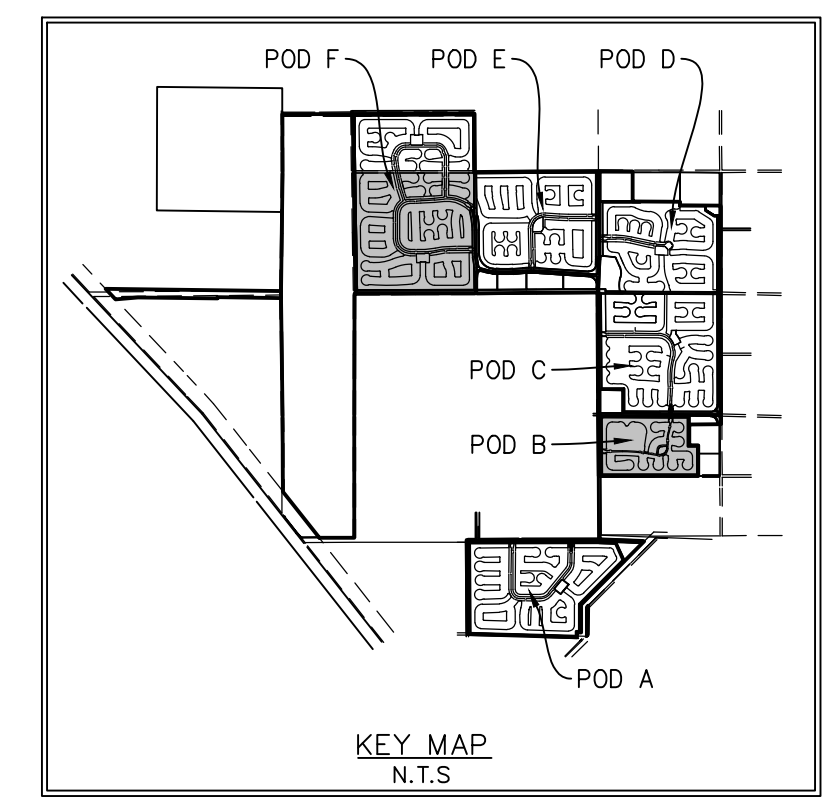
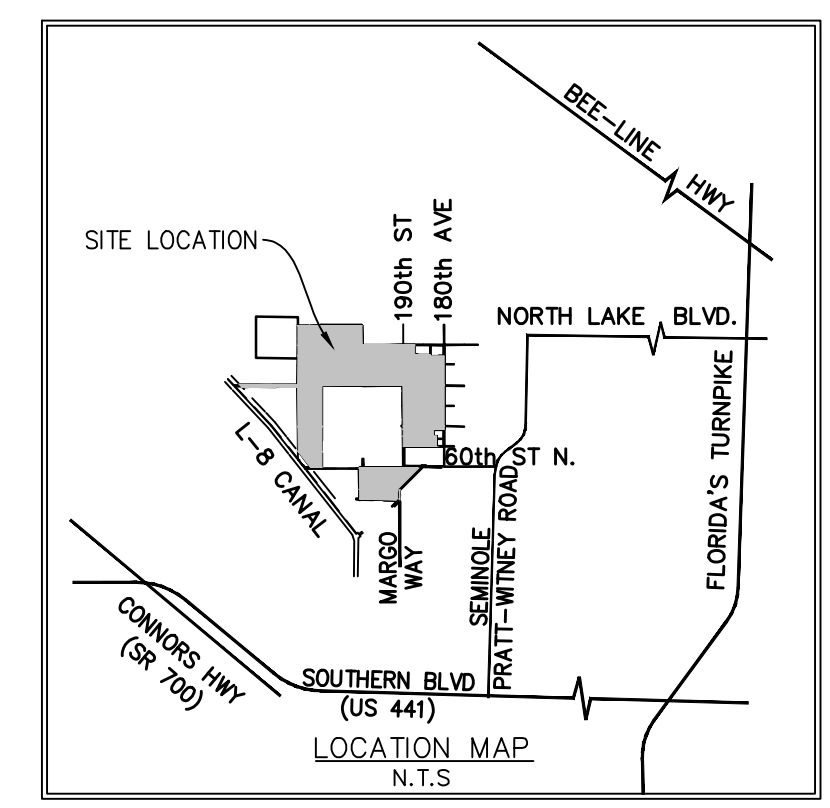
Consultants:
CIVIL ENGINEER
 GLH Engineering, LLC
 1600 Sawgrass Corporate Pkwy
 Suite 400
 Sunrise, FL 33323
 954-753-1730
SURVEYOR
 Sand and Hills Survey, Inc.
 8461 Lake Worth Road, Suite 410
 Lake Worth, FL 33467
 (561) 209-6048
TRAFFIC ENGINEER
 Simmons and White
 2581 Metrocentre Blvd, Suite 3
 West Palm Beach, FL 33407
 (561) 478-7848
PLANNERS
 Urban Design Kilday Studios
 610 Clematis Street, Suite CU02
 West Palm Beach, FL 33401
 (561) 366-1100

Project:
INDIAN TRAILS GROVE - PUD
 Palm Beach County, Florida
 Sheet title:
PRELIMINARY Master Plan - Pod F

Date:
 2015-07-15
Revisions:

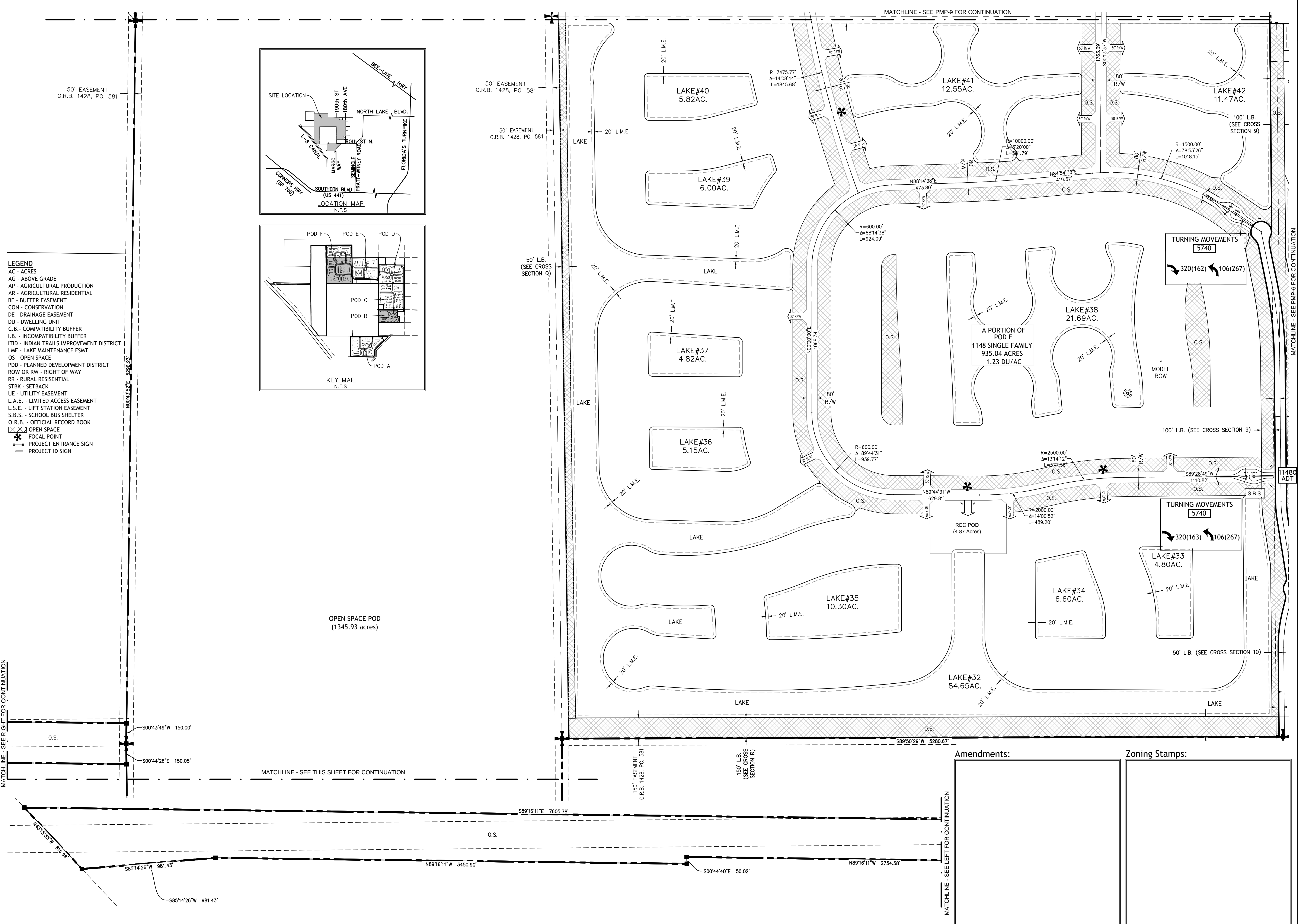


Sheet number:
PMP-8



OPEN SPACE POD
 (1345.93 acres)

- LEGEND**
- AC - ACRES
 - AG - ABOVE GRADE
 - AP - AGRICULTURAL PRODUCTION
 - AR - AGRICULTURAL RESIDENTIAL
 - BE - BUFFER EASEMENT
 - CON - CONSERVATION
 - DE - DRAINAGE EASEMENT
 - DU - DWELLING UNIT
 - C.B. - COMPATIBILITY BUFFER
 - I.B. - INCOMPATIBILITY BUFFER
 - ITID - INDIAN TRAILS IMPROVEMENT DISTRICT
 - LME - LAKE MAINTENANCE ESMT.
 - OS - OPEN SPACE
 - PDD - PLANNED DEVELOPMENT DISTRICT
 - ROW OR RW - RIGHT OF WAY
 - RR - RURAL RESIDENTIAL
 - STBK - SETBACK
 - UE - UTILITY EASEMENT
 - L.A.E. - LIMITED ACCESS EASEMENT
 - L.S.E. - LIFT STATION EASEMENT
 - S.B.S. - SCHOOL BUS SHELTER
 - O.R.B. - OFFICIAL RECORD BOOK
 - ☐ OPEN SPACE
 - ✱ FOCAL POINT
 - ➔ PROJECT ENTRANCE SIGN
 - ➔ PROJECT ID SIGN



Amendments:

Zoning Stamps:

