

Section K - 25' Perimeter Incompatibility Buffer

Planting for this buffer shall consist of:

- Canopy trees 20' on center.
- A minimum 6' ht. continuous solid opaque visual screen composed of hedges or shrubs, either alone or in combination with a wall, fence and/or berm. A wall counts as 1 layer of planting; however, a wall shall require a continuous hedge along both sides of the wall and shall then satisfy the shrub planting requirement in lieu of the following:
- For each 100 linear feet of buffer length the following plants shall be provided:

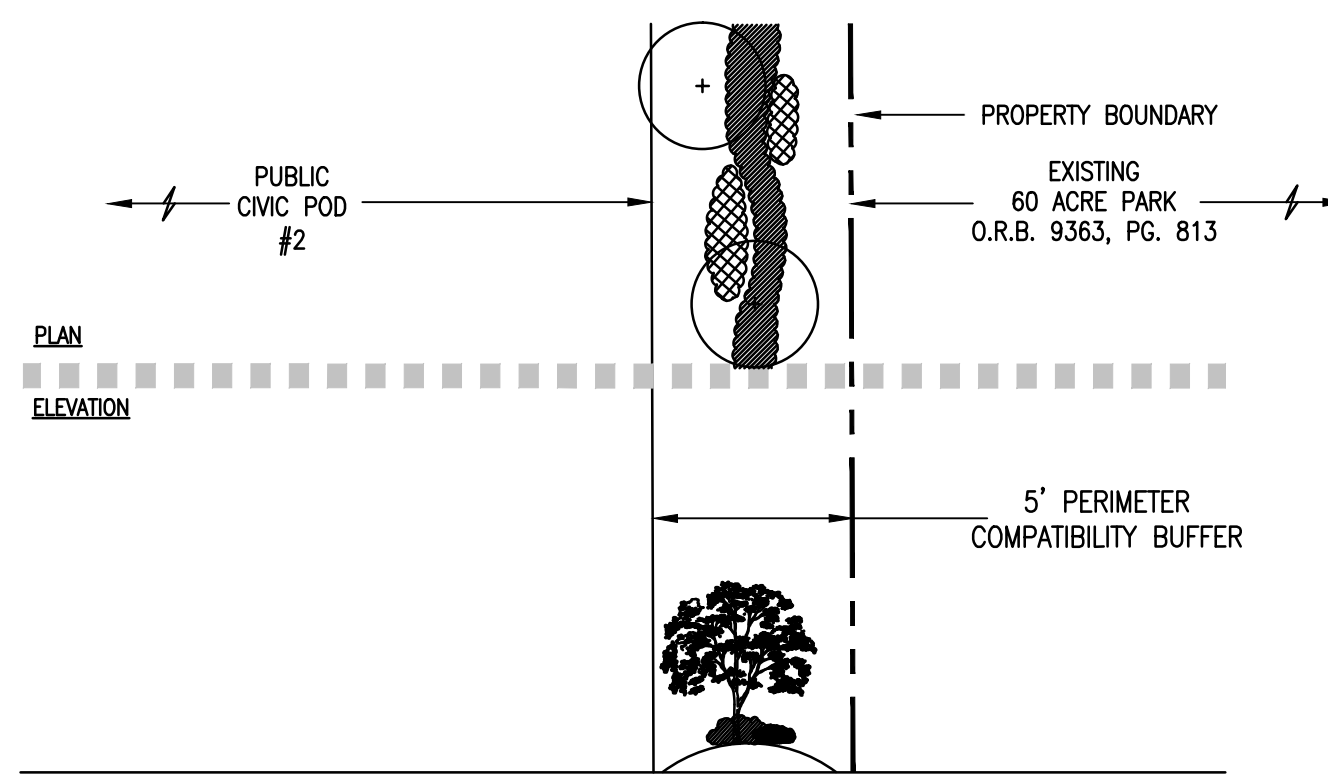
25 large shrubs (36' ht) spaced 48" oc minimum

25 medium shrubs (24' ht) spaced 30" oc minimum

50 small shrubs (18' ht) spaced 24" oc minimum

200 ground cover (6" ht) plants

### K - 25' Perimeter Incompatibility Buffer



Section N.1 - 5' Perimeter Compatibility Buffer

Planting for this buffer shall consist of:

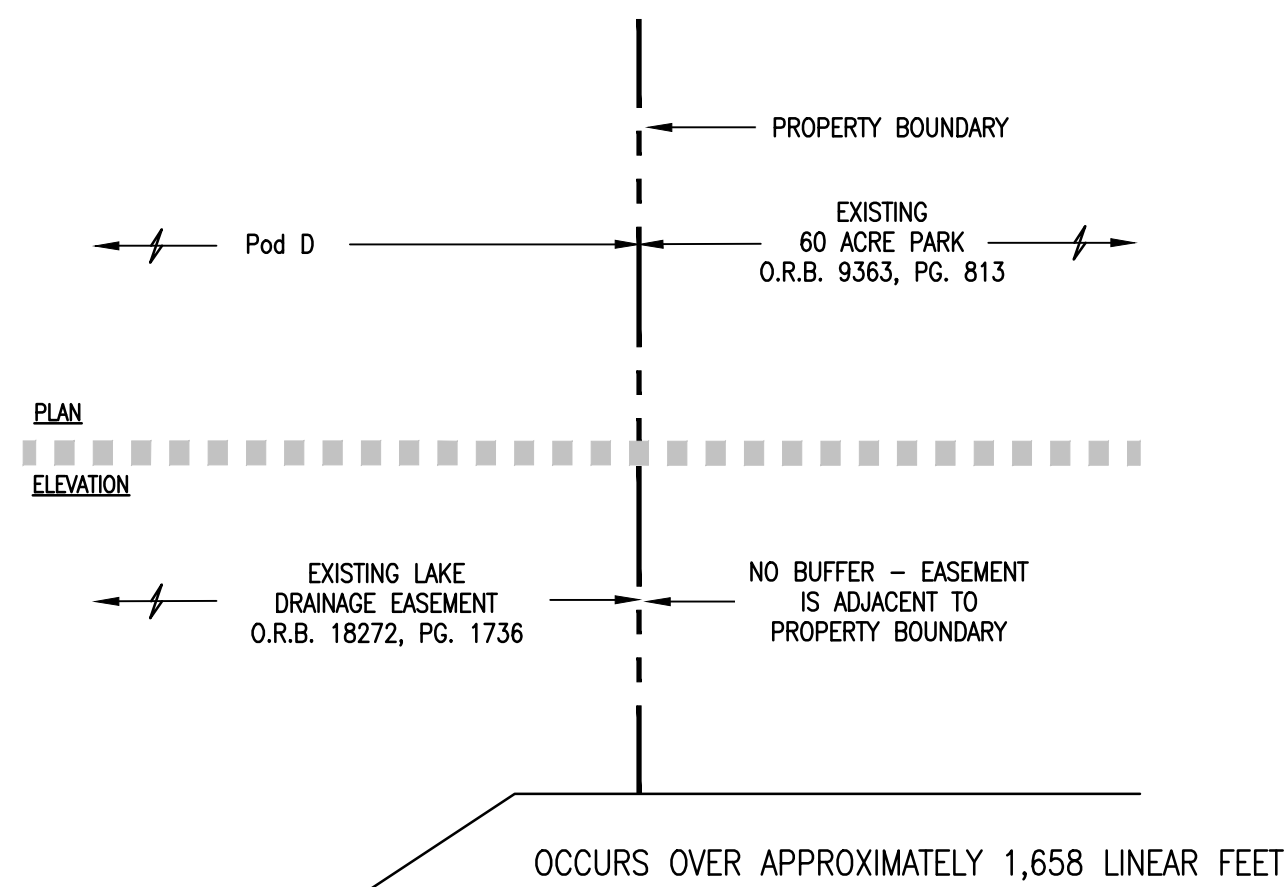
- A minimum 2' ht. continuous opaque visual screen composed of planting alone or in combination with a fence/wall/berm.
- 1 Canopy tree per 25 linear feet.
- For each 100 linear feet of buffer length the following plants shall be provided:

25 medium shrubs (24" ht) spaced 30" oc minimum

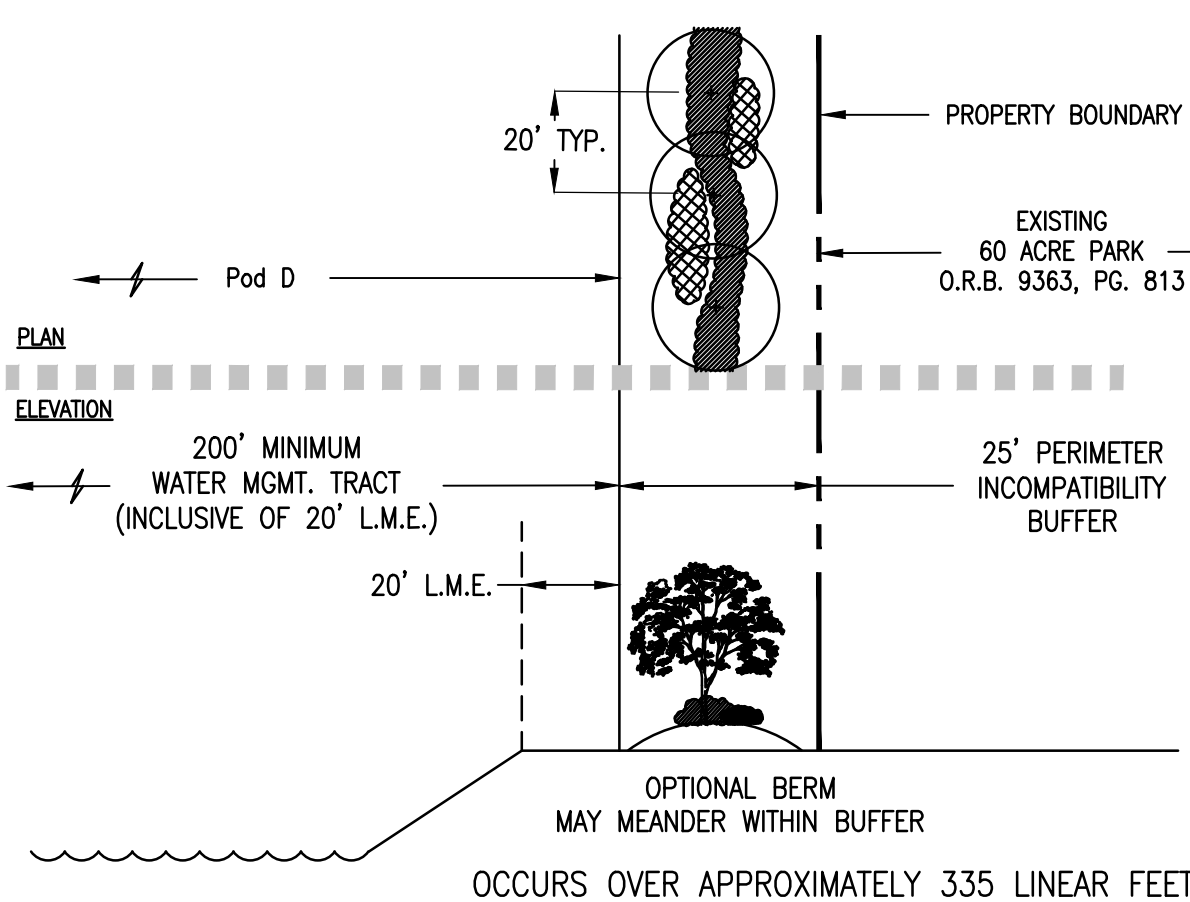
50 small shrubs (18" ht) spaced 24" oc minimum

200 ground cover (6" ht) plants

### N.1 - 5' Perimeter Compatibility Buffer



### L - No Buffer



Section M - 25' Perimeter Incompatibility Buffer

Planting for this buffer shall consist of:

- Canopy trees 20' on center.
- A minimum 6' ht. continuous solid opaque visual screen composed of hedges or shrubs, either alone or in combination with a wall, fence and/or berm. A wall counts as 1 layer of planting; however, a wall shall require a continuous hedge along both sides of the wall and shall then satisfy the shrub planting requirement in lieu of the following:
- For each 100 linear feet of buffer length the following plants shall be provided:

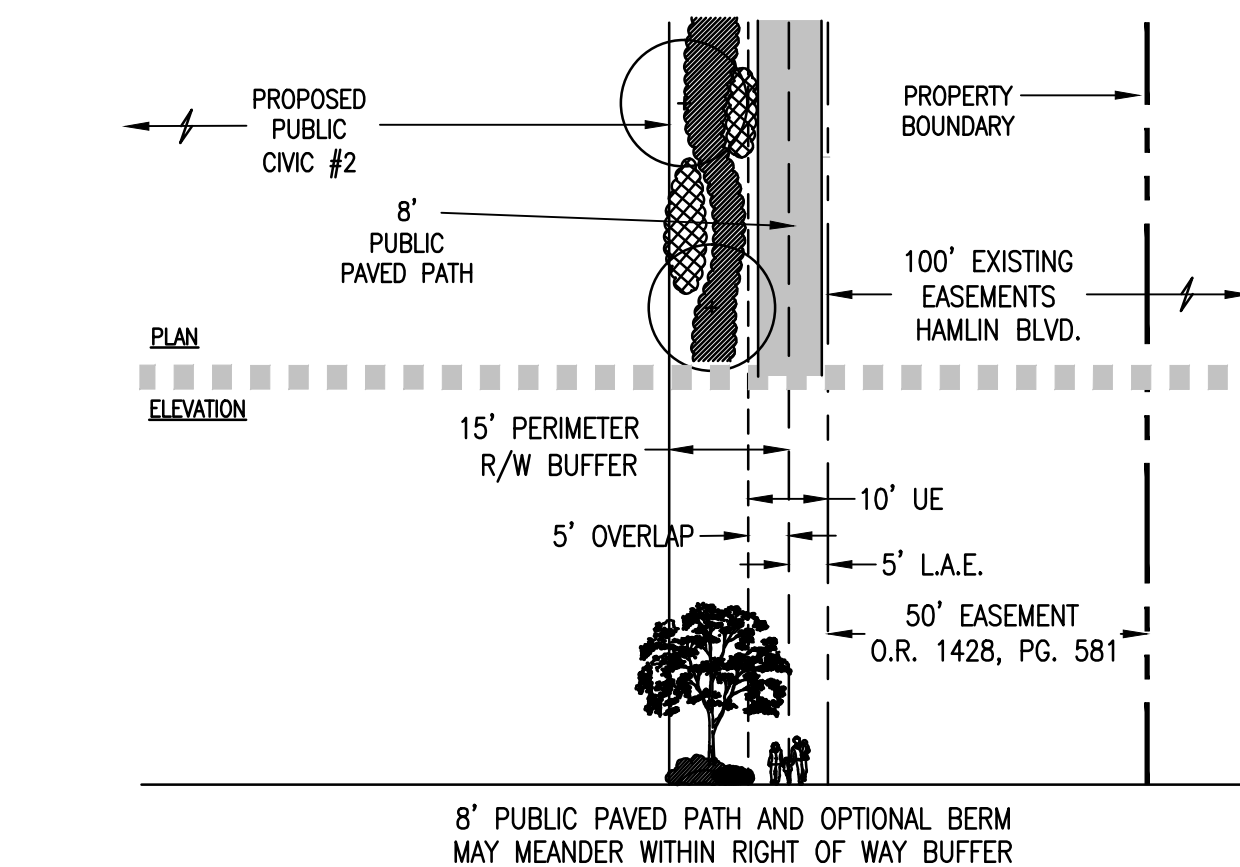
25 large shrubs (36' ht) spaced 48" oc minimum

25 medium shrubs (24' ht) spaced 30" oc minimum

50 small shrubs (18' ht) spaced 24" oc minimum

200 ground cover (6" ht) plants

### M - 25' Perimeter Incompatibility Buffer



Section N.2 - 15' Perimeter Right of Way Buffer

Planting for this buffer shall consist of:

- A minimum 2' ht. continuous opaque visual screen composed of planting alone or in combination with a fence/wall/berm.
- 1 Canopy tree per 25 linear feet.
- For each 100 linear feet of buffer length the following plants shall be provided:

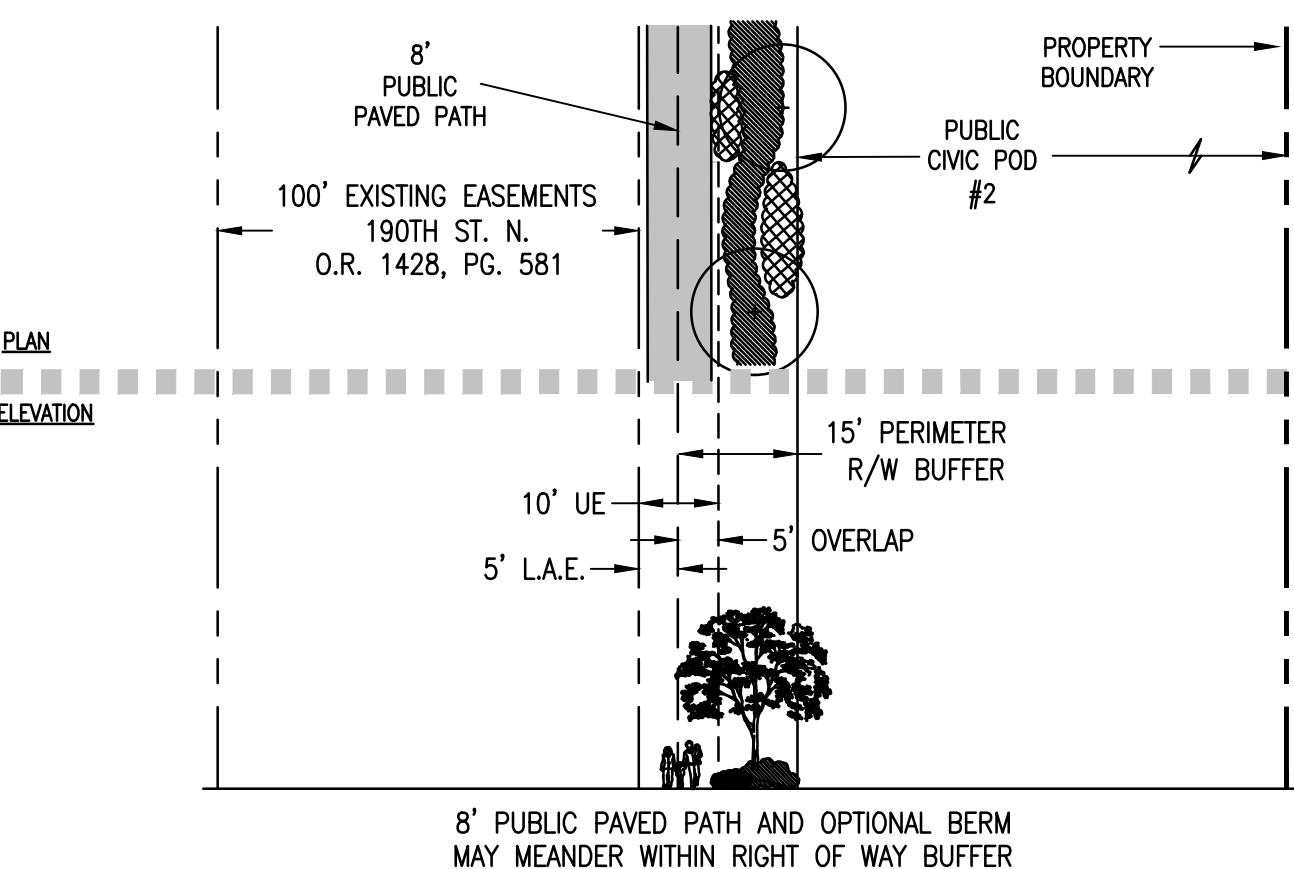
25 large shrubs (36' ht) spaced 48" oc minimum

25 medium shrubs (24' ht) spaced 30" oc minimum

50 small shrubs (18' ht) spaced 24" oc minimum

200 ground cover (6" ht) plants

### N.2 - 15' Perimeter R/W Buffer Public Civic Pod #2



Section N.3 - 15' Perimeter Right of Way Buffer

Planting for this buffer shall consist of:

- A minimum 2' ht. continuous opaque visual screen composed of planting alone or in combination with a fence/wall/berm.
- 1 Canopy tree per 25 linear feet.
- For each 100 linear feet of buffer length the following plants shall be provided:

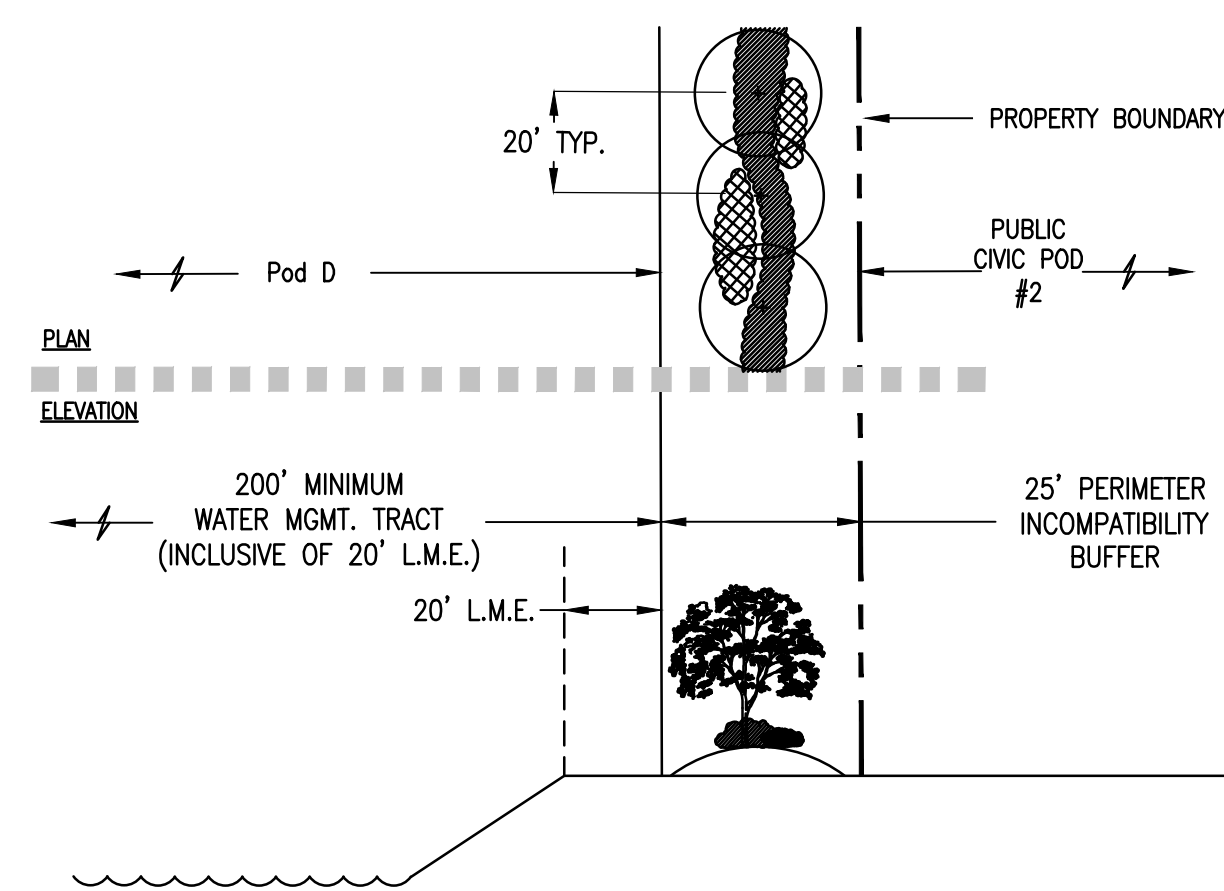
25 large shrubs (36' ht) spaced 48" oc minimum

25 medium shrubs (24' ht) spaced 30" oc minimum

50 small shrubs (18' ht) spaced 24" oc minimum

200 ground cover (6" ht) plants

### N.3 - 15' Perimeter R/W Buffer Public Civic Pod #2



Section N - 25' Type 2 Incompatibility Buffer

Planting for this buffer shall consist of:

- Canopy trees 20' on center.
- A minimum 6' ht. continuous solid opaque visual screen composed of hedges or shrubs, either alone or in combination with a wall, fence and/or berm. A wall counts as 1 layer of planting; however, a wall shall require a continuous hedge along both sides of the wall and shall then satisfy the shrub planting requirement in lieu of the following:
- For each 100 linear feet of buffer length the following plants shall be provided:

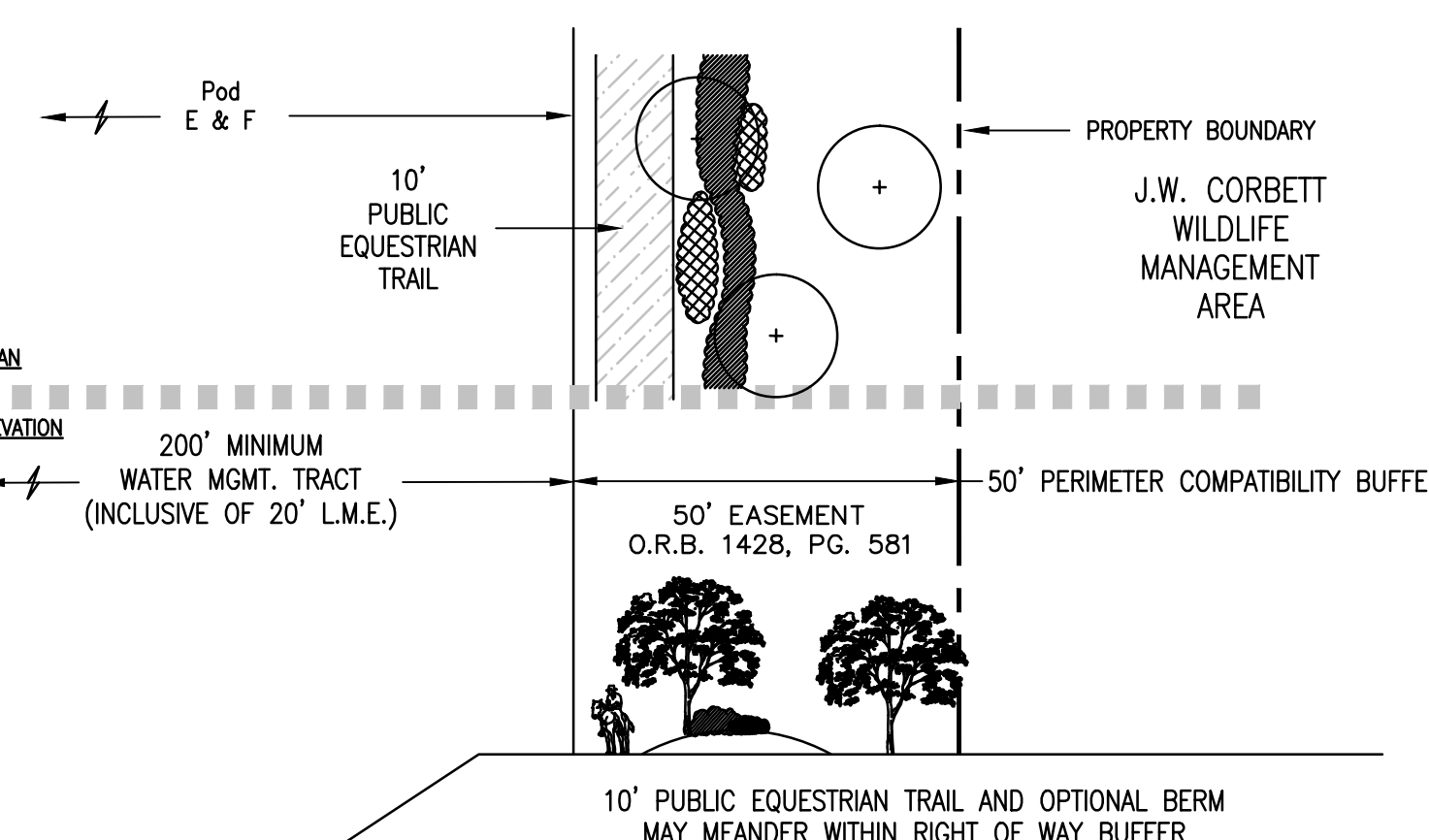
25 large shrubs (36' ht) spaced 48" oc minimum

25 medium shrubs (24' ht) spaced 30" oc minimum

50 small shrubs (18' ht) spaced 24" oc minimum

200 ground cover (6" ht) plants

### N - 25' Type 2 Incompatibility Buffer



Section O - 50' Perimeter Compatibility Buffer

Planting for this buffer shall consist of:

- A minimum 2' ht. continuous opaque visual screen composed of planting alone or in combination with a fence/wall/berm.
- 1 Canopy tree per 25 linear feet.
- For each 100 linear feet of buffer length the following plants shall be provided:

25 medium shrubs (24" ht) spaced 30" oc minimum

50 small shrubs (18" ht) spaced 24" oc minimum

200 ground cover (6" ht) plants

### O - 50' Perimeter Compatibility Buffer

**PALM BEACH WEST ASSOCIATES I, LLLP**  
 1600 SAWGRASS CORPORATE PKWY SUITE 400  
 SUNRISE, FLORIDA 33323  
 954-753-1730

Consultants:

**CIVIL ENGINEER**  
 GLH Engineering, LLC  
 1600 Sawgrass Corporate Pkwy Suite 400  
 Sunrise, FL 33323  
 954-753-1730

**SURVEYOR**  
 Sand and Hills Survey, Inc.  
 8461 Lake Worth Road, Suite 410  
 Lake Worth, FL 33467  
 (561) 209-6048

**TRAFFIC ENGINEER**  
 Simmons and White  
 2581 Metrocentre Blvd. Suite 3  
 West Palm Beach, FL 33407  
 (561) 478-7848

**PLANNERS**  
 Urban Design Kilday Studios  
 610 Clematis Street, Suite CU02  
 West Palm Beach, FL 33401  
 (561) 366-1100

Project:  
**INDIAN TRAILS GROVE - PUD**

Palm Beach County, Florida

Sheet title:  
**PRELIMINARY Regulating Plan**

Date:  
**2015-07-15**

Revisions:  
 2015-09-28 Resubmittal

Amendments:

Zoning Stamps:

Sheet number:

**PRP-4**