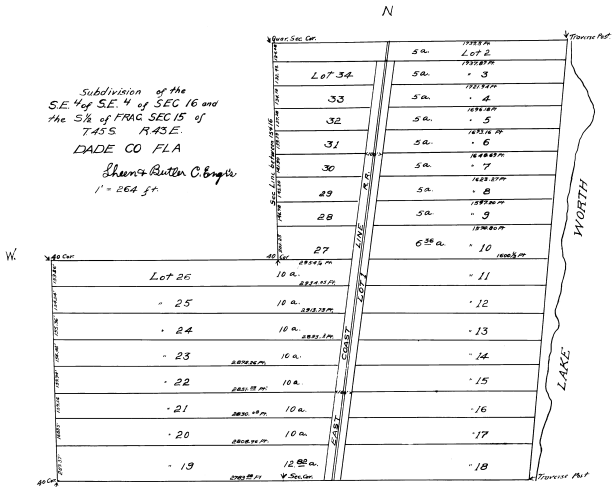


This is not a certified copy

SAM BROWN Jr's
HYPOLUXO SUBDIVISION



Subdivision of the
S.E. 1/4 of S.E. 1/4 of SEC 16 and
the S 1/2 of FRAG SEC 15 of
T.45 S R.43 E.
DADE CO FLA

Sherris Butler C. Engler
1 - 264 pp

Note) The area of the 5 and 10 acre lots does not include the "Washed Way" which is mentioned "Lot 1"
to return the area of 5000 sq ft add for 5 acre lots 34 1/2 x 50 ft
26.25 ac. extends across the tract

Recorded this November 6th 1895

STATE OF FLORIDA
COUNTY OF PALM BEACH
I, Sherris Butler C. Engler
County Engineer, do hereby certify that the
above and foregoing is a true and
correct copy of the
original as the same appears on file
in my office.

STATE OF FLORIDA
COUNTY OF PALM BEACH
I, Sherris Butler C. Engler
County Engineer, do hereby certify that the
above and foregoing is a true and
correct copy of the
original as the same appears on file
in my office.

Filed
County Clerk
of State of
Florida

81
Copied by
BIDWELL & HIGGINS
Under direction of
COUNTY ENGINEER

Sherris C. B. Engler