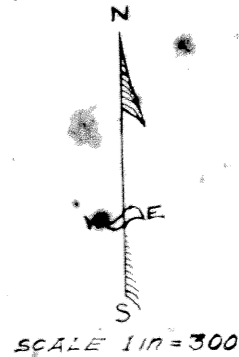


5-78

MODEL LAND CO.  
SUBDIVISION OF  
SEC 14 T. 44 S. R. 42 E.

32

18



B. DWELL & HOLSTLAW  
ENGINEERS  
WEST PALM BEACH FLA.  
Sept. 1914  
1st Edition N.M.P.E.

Original 60' Corners  
Reestablished " " " "

Model Land Company,  
imple owner of Section  
own on this plat, has caused  
tificate to the perpetual  
with the right to the owner  
in drainage ditches with-

any has caused these  
orporate seal affixed,  
A.D. 1914.

EL LAND COMPANY.

*H. S. Harrison*  
President

*Sally Harrison*  
Its Secretary

own and acknowledged that  
d on behalf of the Model Land  
Siapay Harrison and  
ted the execution of said  
thereto the corporate seal

nd and affixed my official  
A.D. 1914.

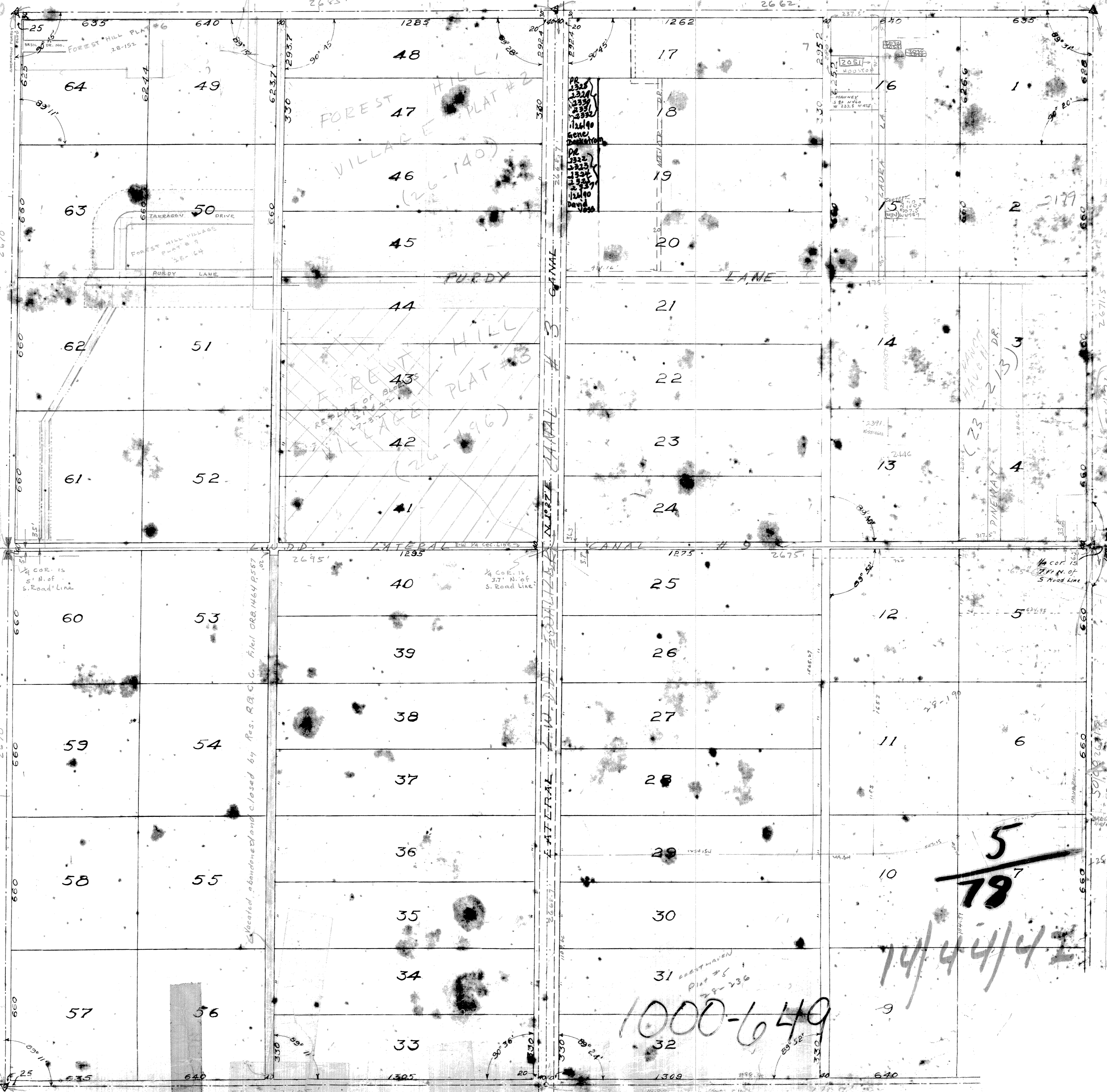
State of Florida at Large  
ires March 22<sup>nd</sup> 1917

own, who being duly sworn  
Holstlaw, Engineers, and that  
al survey of the land shown  
urate and correct to the best

*E. Richard*  
Florida, this 24<sup>th</sup> day of

*W. H. Mason*  
State of Florida, at Large  
ires March 6, 1918.

November 13<sup>th</sup>  
78  
*J. O. Ousterly*  
*H. W. Miller*



1000-649

74/44/42

DRAWING NUMBER

DRAWING NUMBER