

9-20

DRAWING NUMBER

DRAWING NUMBER

DEDICATION

STATE OF FLORIDA }
 COUNTY OF PALM BEACH } ss.
 KNOWN ALIEN BY THESE PRESENTS, that the West Gate Realty Co., a corporation organized and existing under the laws of Florida has caused the north 133 feet of Section 30, Township 43 S., Range 43 E., in Palm Beach County, Florida, to be surveyed and platted as shown herein, and hereby presents dedicated to the perpetual use of the public all the streets, roads, highways, shown hereon.

IN WITNESS WHEREOF, West Gate Realty Co. has caused these presents to be signed by John Zimmer, its president, and attested by A.C. Adams, its secretary, and its corporate seal to be hereunto affixed this 23rd day of February, A.D. 1923.

Executed in the presence of: _____

West Gate Realty Co.
 By John Zimmer
 its President
 Attest: A.C. Adams
 its Secretary

ACKNOWLEDGEMENT

STATE OF FLORIDA }
 COUNTY OF PALM BEACH } ss.
 I HEREBY CERTIFY that on this day personally came before me, the undersigned authority, John Zimmer and A.C. Adams respectively, President and Secretary of the West Gate Realty Co., a corporation organized and existing under the laws of Florida, and known to me, well known and by me well known to be the individuals mentioned, and who executed the above dedication, and they acknowledged before me that they executed the same for and on behalf of the said corporation, and as duly authorized officers thereof, and that they executed the same voluntarily, constituted, and freely and voluntarily and for the purposes therein expressed.

IN WITNESS my hand and official seal at West Palm Beach in said county and state on this the 23rd day of February, A.D. 1923.

John Zimmer Notary Public
 My commission expires
 November 12 - 1926

AMENDED PLAT

OF

BLOCKS 1, 2, 3, 4, 5, 6 AND THE NORTHERN PART OF BLOCK A

WEST GATE ESTATES

NORTHERN SECTION

MARKED "RESERVED BY OWNERS" AND "RESERVED" AND THAT LAND LYING BETWEEN SAID BLOCKS AND THE SOUTH LINE OF OKEECHOBEE ROAD.

SITUATED IN SECTION 30, T. 43 S., R. 43 E.

PALM BEACH COUNTY FLORIDA

JANUARY 1923

SCALE 1"=200'

SURVEYED & PLATTED

BY

CARR & McFADDEN

AFFIDAVIT

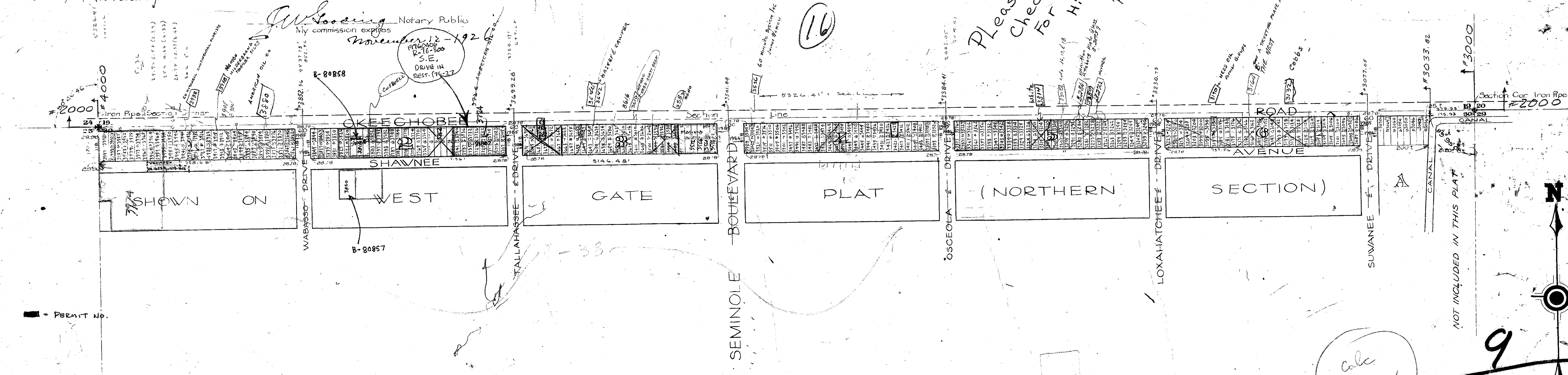
STATE OF FLORIDA }
 COUNTY OF PALM BEACH } ss.
 I HEREBY CERTIFY That the attached plat is a correct representation of a survey made under our direction and is accurate to the best of our knowledge and belief.

CARR & McFADDEN, INC.
 Engineers
 By Carr & McFadden
 Florida Eng. Cert. No. 175

Subscribed and sworn to before me this 23rd day of February, A.D. 1923.

My Commission Expires
 November 12 - 1926

John Zimmer
 Notary Public



Please check with owner for #1's that surround him.

Please see either plat or map for #2's.

10

calc B.W.

1000-676

9/20

30/43/43

24 February

25 February

26 February

DRAWING NUMBER

DRAWING NUMBER

DRAWING NUMBER