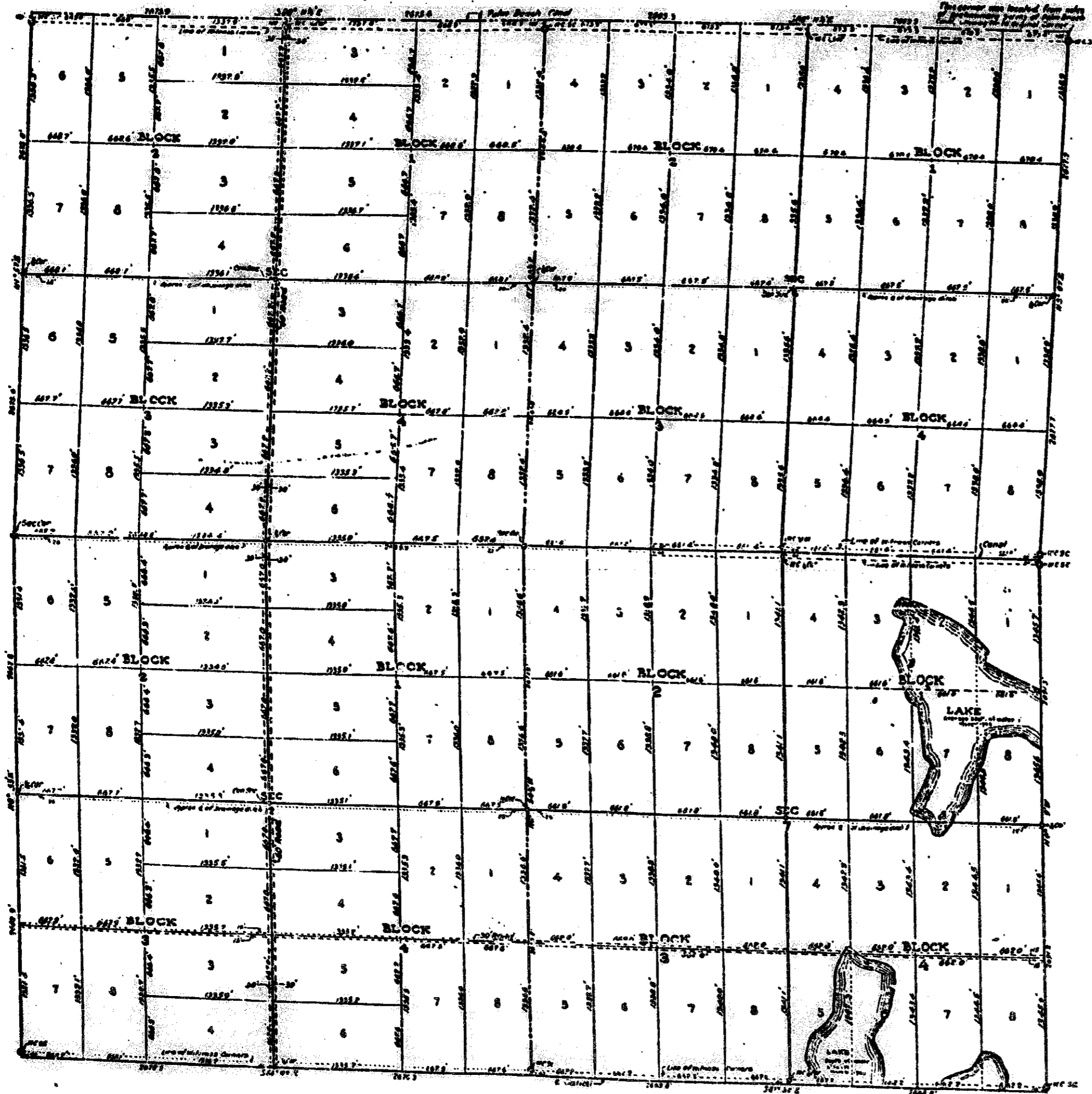


PALM BEACH PLANTATIONS

(MODEL LAND COMPANY)

1000-123

A Subdivision of Sections 1 and 12 in Township 44S of Range 42E, and Sections 6 and 7 in Township 44S of Range 43E, Palm Beach County, Florida.



DEDICATION

KNOW ALL MEN BY THESE PRESENTS - That The Model Land Company a Corporation created and organized under the laws of the State of Florida the fee simple owner of Sections 1 and 12 in Township 44 South of Range 42 East, and Sections 6 and 7 in Township 44 South of Range 43 East, Tallahassee Meridian, County of Palm Beach, Florida, and shown on this Plat has caused said land to be surveyed and platted, and does hereby dedicate to the perpetual use of the public as public highways the roads shown hereon. In witness whereof the Model Land Company has caused these presents to be signed on its behalf by its President and attested by its Secretary and its Corporate Seal hereto affixed, this 14th day of July, A.D. 1924.

Attest: Wm. J. Harrison
 Secretary.

Model Land Company.
 By: J. E. Ingraham
 President.

ACKNOWLEDGEMENT

Before me personally appeared J. E. Ingraham, to me well known, and acknowledged that he executed the foregoing Dedication as president of and for and on behalf of the Model Land Company a Florida Corporation, and before me also appeared Sidney Harrison and acknowledged that he as Secretary of said Corporation attested the execution of said Dedication by the President of said Corporation and affixed hereto the Corporate Seal of said Corporation.

In witness whereof I have set my hand and affixed my official Seal this 14th day of July, A.D. 1924.
J. A. Bennett
 Notary Public
 My Commission expires July 15, 1925

ENGINEERS CERTIFICATE

I certify that the location, measurements, and bearings of the boundary lines of the plat shown hereon are taken from actual data found on the ground by survey under my direction, that the sub-division into Tracts of the Plat shown, and as located by the above mentioned survey, was made under my direction and that the information shown hereon is true and accurate to the best of my knowledge and belief.

C. G. Davis
 Chief Engineer for the Model Land Co. Florida State Certificate No. 23

Subscribed and Sworn to before me this 14th day of July, A.D. 1924.
J. A. Bennett
 Notary Public My Commission expires July 15, 1925

Note: - Dimensions of Tracts shown on Plat refer to actual Sub-division Corners. Dimensions of sections refer to actual Section Corners and 1/4 Sec corners. Scale: 1 inch = 500 ft

Surveyed and Platted by
 Butler Barnett, Taylor
 Civil Engineers & Surveyors
 CITIZENS BANK BLDG
 West Palm Beach, Fla.
 Under direction of A. A. Dooley
 Chief Engineer for the Model Land Co.
 Florida State Certificate No. 113