

DRAWING NUMBER  
**10-80**

DRAWING NUMBER

DRAWING NUMBER

DRAWING NUMBER

STATE OF FLORIDA S.S.  
 COUNTY OF PALM BEACH  
 KNOW ALL MEN BY THESE PRESENTS, that  
 A. H. Nichols and Martha Nichols his wife,  
 owners of the following described land (The North East 1/4  
 of the South East 1/4 of the North West 1/4 of Sec. 24, Township 43S, Range 42  
 East) have caused the same to be surveyed and platted as shown hereon,  
 and do hereby dedicate to the perpetual use of the public the streets  
 and highways as shown hereon, Reserving unto themselves their  
 heirs and assigns, the reversion or reversions of same whenever  
 abandoned by the public or discontinued by law.  
 IN WITNESS WHEREOF They have hereunto set their  
 hands and seals this 20 day of Dec. A.D. 1924.

In the presence of:  
A. H. Nichols  
Martha Nichols  
A. V. Brown  
G. A. Godrich

STATE OF FLORIDA S.S.  
 COUNTY OF PALM BEACH  
 I HEREBY CERTIFY that on this day personally  
 appeared before me A. H. Nichols and Martha Nichols his  
 wife, known by me to be the persons described herein and  
 who executed the foregoing dedication freely and voluntarily for  
 the purposes therein expressed.  
 IN WITNESS WHEREOF I have hereunto set my hand  
 and official seal at West Palm Beach, Florida, this 20 day  
 of Dec. A.D. 1924.  
A. V. Brown  
 Notary Public  
 My commission expires  
December 6, 1927

STATE OF FLORIDA S.S.  
 COUNTY OF PALM BEACH  
 I HEREBY CERTIFY that the attached plat is a true  
 and correct representation of a survey made under my direction  
 and that it is accurate to the best of my knowledge and belief.  
H. H. Kimball  
 Subscribed and sworn to before me at West Palm Beach,  
 Florida, this the 10 day of January A.D. 1925  
Stella M. Trammell  
 Notary Public  
 My commission expires  
June 26, 1928

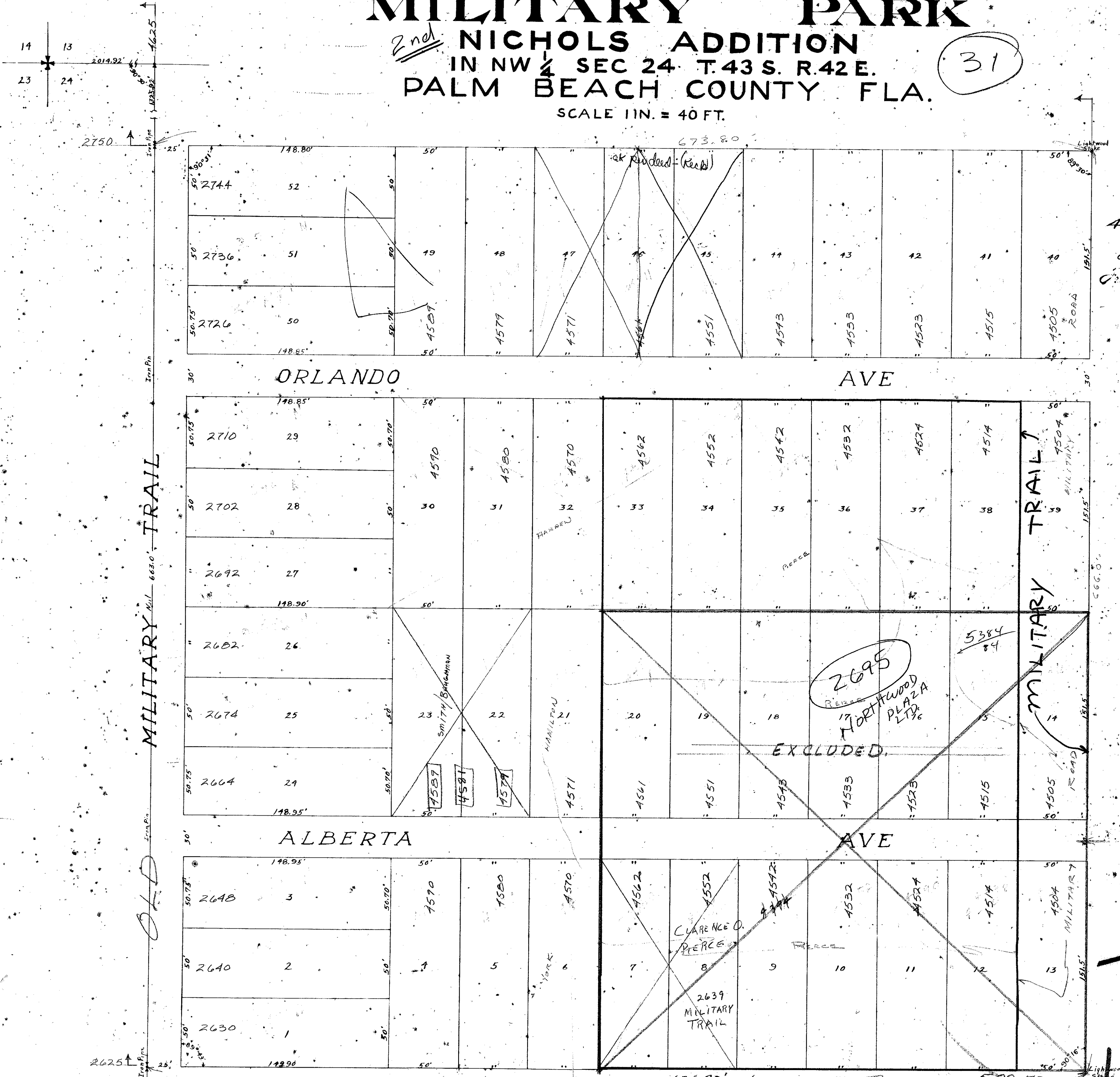
# MILITARY PARK

2nd NICHOLS ADDITION  
 IN NW 1/4 SEC 24 T. 43 S. R. 42 E.  
 PALM BEACH COUNTY FLA.

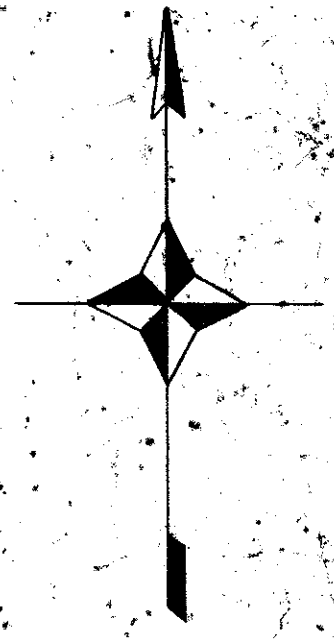
SCALE 1 IN. = 40 FT.

31

80



AP 14  
 25  
 January 25  
 Plate 80  
 P. C. Marino



10/80

VACATED BY RESOLUTION 5-20-50  
 DB-908 PG 548  
 1000-683 24/43

645.90  
 2314.92  
 2664.82  
 132.84