

DRAWING NUMBER  
**13-67**

DRAWING NUMBER

DRAWING NUMBER

DRAWING NUMBER

*County Maintained*

# BELLE VUE PARK

ADDITION TO CITY OF LAKE WORTH  
PALM BEACH COUNTY  
FLORIDA

RECORDED  
JAN 26 1926  
OFFICE OF THE COUNTY CLERK  
PALM BEACH COUNTY, FLORIDA

### -LOCATION-

Being Subdivision of Lot 105 of the W $\frac{1}{2}$  of Section 20 Township 44 So. Range 43 E, Palm Beach Farms Company's Property, as shown in Plat Book # 5, Page 79 Palm Beach County, Florida records.

### -DEDICATION-

KNOW ALL MEN BY THESE PRESENTS:-  
That the undersigned, Mrs. Carrie Ewing divorcee, owner in fee simple of the tract of land shown hereon, has caused said land to be surveyed and platted as shown hereon and do hereby dedicate to the perpetual use of the Public as public highways the streets shown hereon, reserving unto herself, her successors, legal representatives and assigns, the reversions thereof whenever the same shall be abandoned by the public or discontinued by law.  
Witness:- J. D. Humphreys  
Mrs. Carrie Ewing

### -ACKNOWLEDGEMENT-

STATE OF FLORIDA  
PALM BEACH COUNTY-  
Before me a Notary Public for the State at large, personally appeared Mrs. Carrie Ewing to me well known and known to be the person who signed the foregoing dedication.  
In witness thereof, I have set my hand and affixed my official seal this 17<sup>th</sup> day of December AD 1925.

C. P. Rockefeller  
Notary Public  
My Commission Expires May 19<sup>th</sup> 1929

### -ENGINEERS CERTIFICATE-

I certify that the location, measurements and angles of the boundary lines of the plat shown hereon are taken from actual data found on the ground by Survey under my direction; that the Subdivision into lots of the plat shown and as located by the above mentioned Survey, was made under my direction and that the information shown hereon is true and accurate to the best of my knowledge and belief.

J. H. Williams  
Florida State Certificate # 876  
Subscribed and Sworn to before me this 19<sup>th</sup> day of December, A. D. 1925

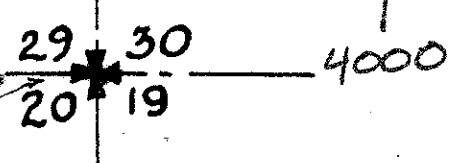
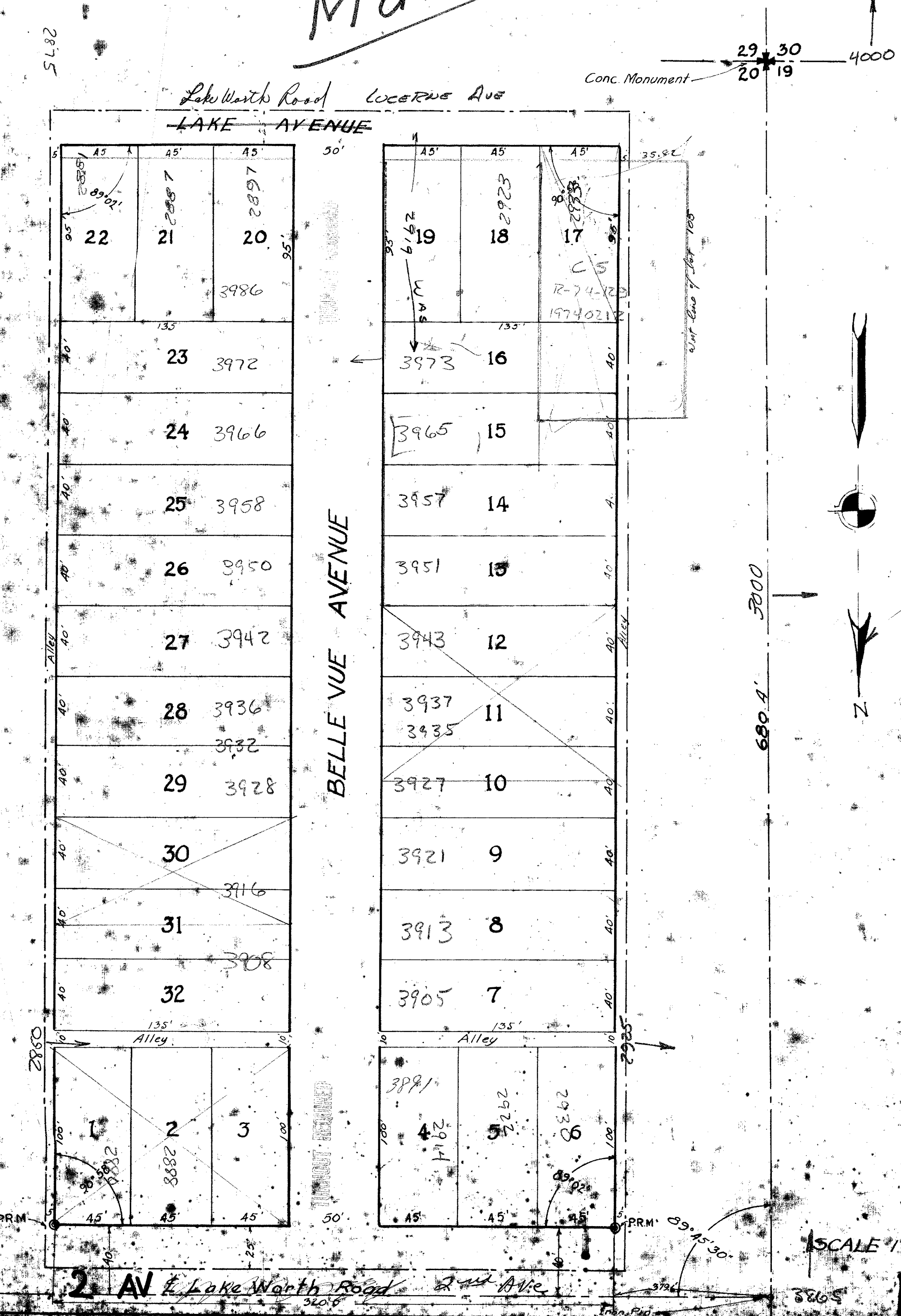
C. P. Rockefeller  
Notary Public  
My Commission Expires May 19<sup>th</sup> 1929

APPROVED BY BOARD OF COUNTY COMMISSIONERS

BY Albert D. Taylor  
ACTING COUNTY ENGINEER

APPROVED BY THE BOARD OF CITY COMMISSIONERS  
CITY OF LAKE WORTH, FLA.

BY J. H. Williams  
CITY ENGINEER



680 A' 3000

SCALE 1" = 40'

# BELLE VUE PARK

1000-6013  
**67**