

4-91

4

REPLAT  
 BLOCKS 6-7-18-19-30-31-42-43 and 54  
**GREENACRES PLAT No 2**  
 BEING IN THE NE 1/4 SECTION 23, T44S, R42E  
 PALM BEACH COUNTY - FLORIDA

January 16  
 See Back

SCALE 1"=100'

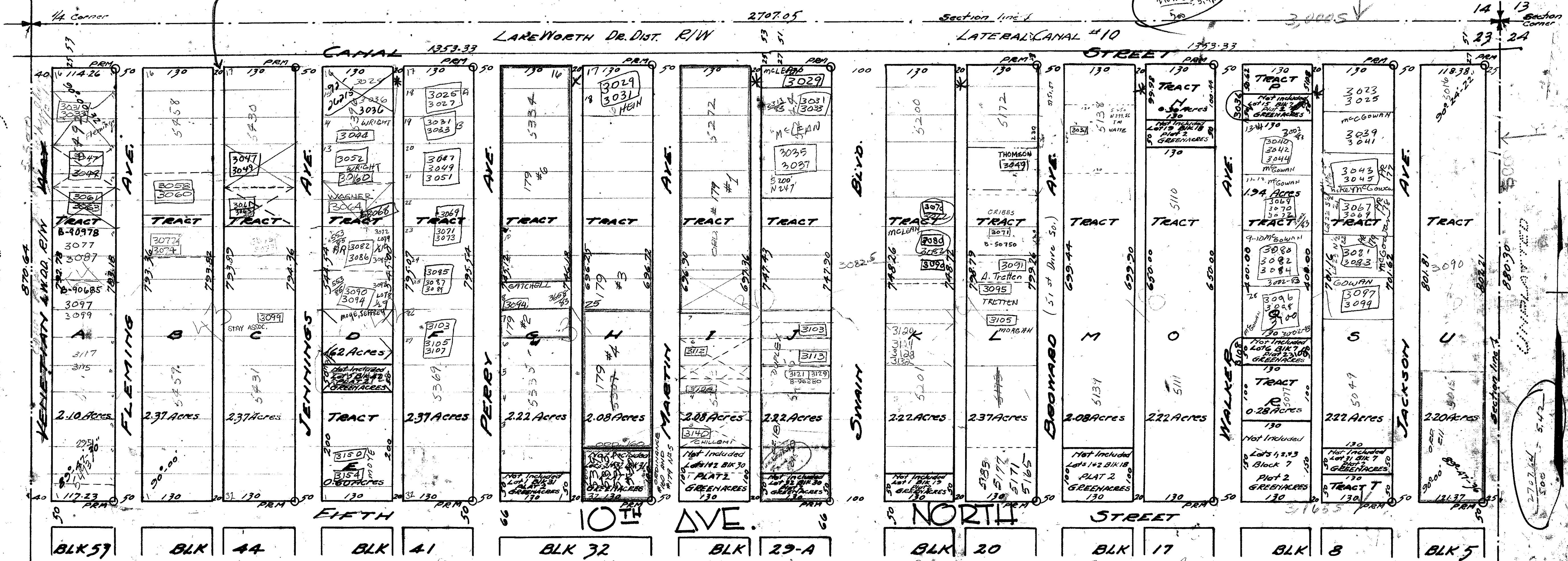
DECEMBER 1928

H. C. FUGATE ENG. CO.

PLAT #2 GREENACRES FILED IN PLAT BOOK 13 AT PAGE 4 PALM BEACH COUNTY RECORDS

5.414

2707.05  
500  
5.414



5.42 GREENACRES PLAT

STATE OF FLORIDA 55  
 COUNTY OF PALM BEACH  
 KNOW ALL MEN BY THESE PRESENTS that the SWAIN DEVELOPMENT CORPORATION a corporation organized and existing under the laws of the STATE OF FLORIDA, the owner, in fee simple, of the tracts of land, lying and being in PALM BEACH COUNTY and STATE OF FLORIDA, and shown on the attached plat as REPLAT of Blocks 6-7-18-19-30-31-42-43 and 54 GREENACRES PLAT No 2, and more particularly described as follows, to wit: lots 1 to 16 inclusive block 54; lots 1 to 32 inclusive block 43; lots 1-4 inclusive, and lots 6 to 32 inclusive block 42; lots 2 to 30 inclusive block 31; lots 3 to 31 inclusive block 30; lots 2 to 32 inclusive block 19; lots 3 to 18 and 20 to 32 inclusive block 18; lots 4 and 5 block 7; lots 7 to 14 inclusive and lots 16 to 30 inclusive and lot 32 all of block 7; lots 1 to 16 inclusive block 6; all of said lots and blocks, according to plat of GREENACRES PLAT No 2 on file in the public records of PALM BEACH COUNTY has caused the same to be surveyed and platted as shown hereon, for the purpose of superseding that part of PLAT No 2 GREENACRES in so far as it affects the above described land

IN WITNESS WHEREOF it has caused these presents to be executed in its name, by its President, and attested by its Secretary, and its corporate seal to be here to affixed, by and with the authority of the Board of Directors this 31st day of December AD 1928

SWAIN DEVELOPMENT CORPORATION  
 By L.C. Swain President  
 Attest E.F. Swain Assistant Secretary

STATE OF FLORIDA 55  
 COUNTY OF PALM BEACH  
 I HEREBY CERTIFY that on this day personally appeared before me, an officer duly authorized to administer oaths and take acknowledgments, L.C. SWAIN and E.F. SWAIN, president and assistant secretary of the Swain Development Corporation, a Florida Corporation, to me well known and known by me to be the individuals described in and who executed the foregoing dedication, and they did acknowledge before me that they executed the same as such officers of said corporation, for the purposes therein expressed, and that their act and deed, was the act and deed of said corporation.

Witness my hand and official seal at Daytona Beach, COUNTY OF PALM BEACH, and STATE OF FLORIDA, this 31st day of DECEMBER AD 1928

Orville Malachuk  
 Notary Public  
 My commission expires January 23rd, 1931

Approved Dec. 29th AD 1928  
 Commissioners GREENACRES CITY  
 By J. J. Southard Mayor

STATE OF FLORIDA 55  
 COUNTY OF PALM BEACH  
 WE HEREBY CERTIFY that we have surveyed and platted the land shown on the attached plat and that said plat is a true and correct representation of said survey and that it is accurate to the best of our knowledge and belief and that the permanent reference monuments have been set as required by law

H.C. FUGATE ENG. CO.  
Geo. S. B. Swain Surveyor  
 Subscribed and sworn to before me at Daytona Beach, FLORIDA this 31st day of Dec. AD 1928

My commission expires July 31, 1928

Approved Jan 1929 AD 1928  
 Commissioners Palm Beach County  
 By J. S. B. Swain County Engineer

GREENACRES - PLAT #2

1000-632

16/4

23/44/42