

20/34

34

DRAWING NUMBER

STATE OF FLORIDA
COUNTY OF PALM BEACH
This plat was filed for record in 130P
1st September
4
20
34
D. B. Merrill, D. C.

PLAT OF RADER SUBDIVISION No. 2 IN SECTION 7, T. 44 S., R. 31 E. PALM BEACH COUNTY, FLORIDA

AUGUST, 1944
FROM THE OFFICE OF
GEORGE S. BROCKWAY,
REGISTERED ENGINEER & SURVEYOR
WEST PALM BEACH, FLORIDA.

204

DRAWING NUMBER

STATE OF FLORIDA
COUNTY OF PALM BEACH SS
KNOW ALL MEN BY THESE PRESENTS, that RADER PROPERTIES, INC., a Florida Corporation, the Owner of the tract of land lying and being in Palm Beach County, Florida, shown on the attached plat as RADER SUBDIVISION No. 2 and more particularly described as follows, to wit:
The West 160 feet of the Northeast Quarter of Section 7, Township 44 South, Range 31 East, Palm Beach County, Florida (less right of way of State Road No. 25 along the North line of said tract)
has caused the same to be surveyed and plotted as shown hereon, and does hereby dedicate to the perpetual use of the public as public highways, the roads, streets and alleys as shown on this plat, reserving, however unto itself, its successors, assigns or legal representatives, the reversion or reversion thereof whenever the same shall be abandoned by the public or discontinued by law.
IN WITNESS WHEREOF, it has caused these presents to be signed by its President and attested by its Secretary, and its corporate seal to be affixed hereto by and with the authority of its Board of Directors this 18th day of August, A.D. 1944.

Attest:
By: *Bessie Rader*
Its Secretary
By: *Leo J. Rader*
Its President

RADER PROPERTIES, INC.
Notary Public

STATE OF FLORIDA
COUNTY OF PALM BEACH SS
I HEREBY CERTIFY that on this day personally appeared before me, an officer duly authorized to administer oaths and take acknowledgments, LEO J. RADER and BESSIE RADER, President and Secretary, respectively, of RADER PROPERTIES, INC., a Corporation, to me well known and known to me to be the individuals described in, and who executed the foregoing dedication, and they acknowledged before me that they executed the same as such officers of said Corporation, by and with the authority of the Board of Directors of said Corporation for the purposes therein expressed, and that their act and deed was the act and deed of said Corporation.
WITNESS my hand and official seal of West Palm Beach County, Florida, and State of Florida, this 18th day of August, A.D. 1944.

My Commission expires: March 14, 1947

STATE OF FLORIDA
COUNTY OF PALM BEACH SS
I HEREBY CERTIFY that the plat shown hereon as RADER SUBDIVISION No. 2 is a true and correct representation of a survey, made under my direction, of the foregoing described property, and that said survey is accurate to the best of my knowledge and belief, and that permanent reference monuments (P.R.M.) have been placed as required by law.
Subscribed and sworn to before me this 18th day of August, A.D. 1944.
My Commission expires: March 14, 1947

1000-655

N. L. Fitzerald
Registered Land Surveyor
Florida Certificate No. 1000-655
Notary Public

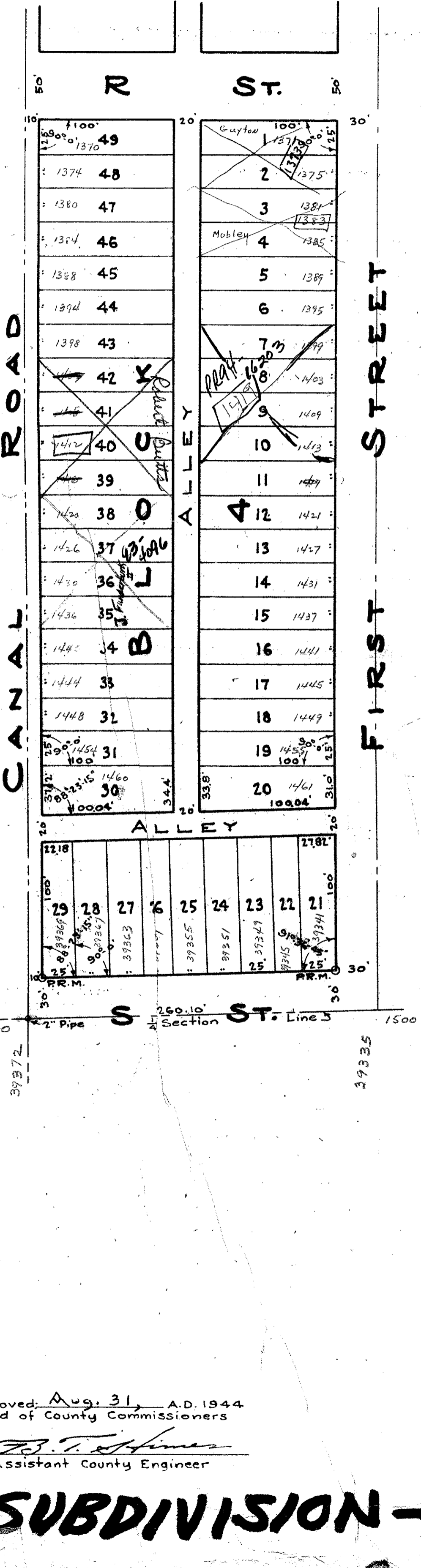
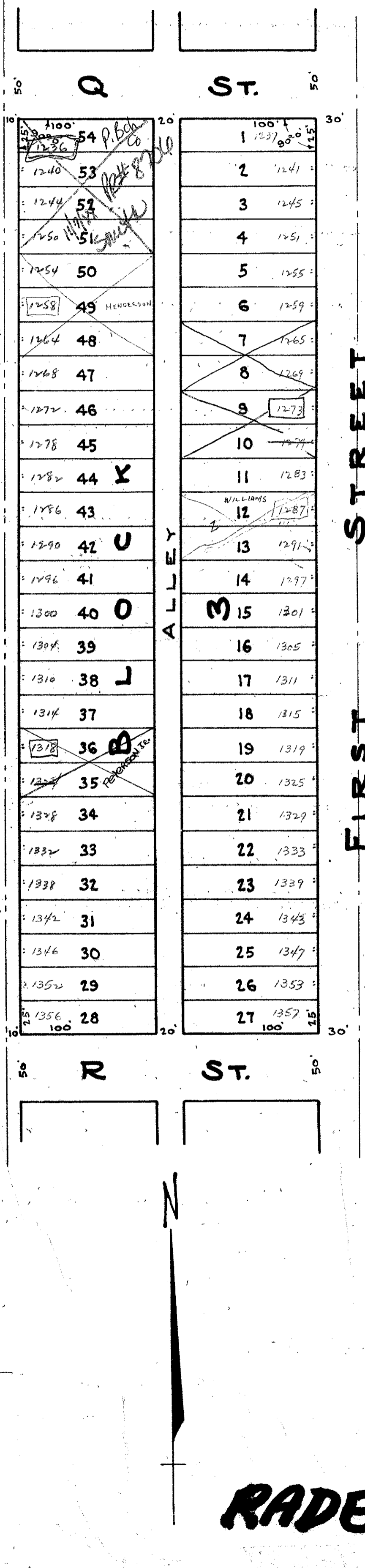
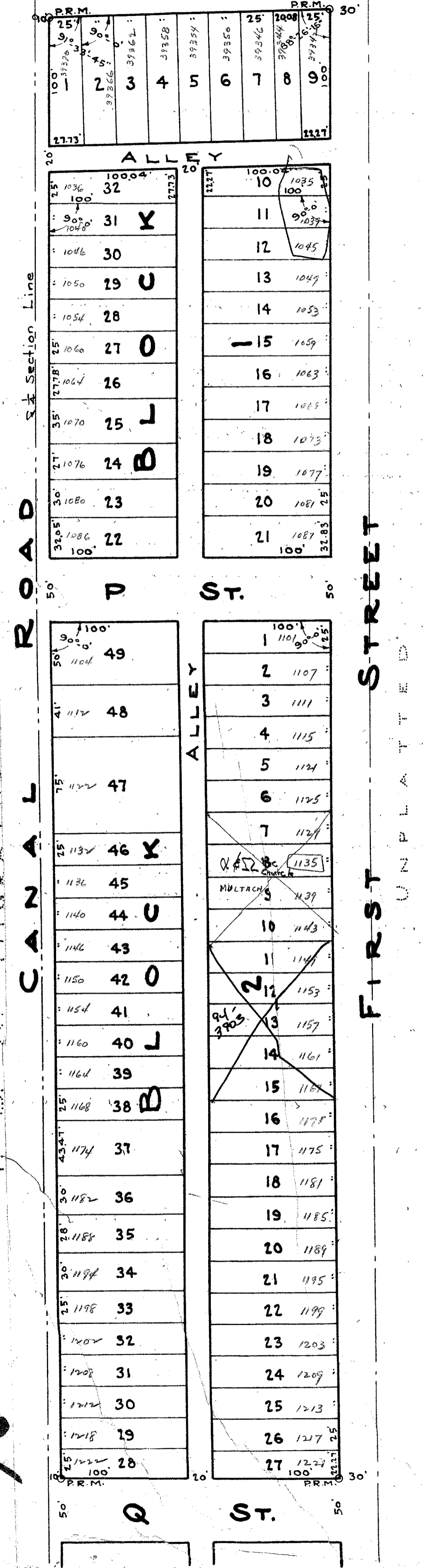
DRAWING NUMBER

10-34

DRAWING NUMBER

NE/02
Sec. Cor. Section Line
260.11'

STATE ROAD No. 25



Approved: Aug. 31, A.D. 1944
Board of County Commissioners
By: *[Signature]*
Assistant County Engineer

RADER SUBDIVISION - #2

20/34