

DRAWING NUMBER
20-89

DEDICATION

STATE OF FLORIDA }
COUNTY OF PALM BEACH } ss.

KNOW ALL MEN BY THESE PRESENTS that C.E. Bryant, unmarried, the owner in fee simple of the tract of land shown hereon as "BRYANT PARK", and more particularly described as Lot 8 and the East 1/2 of Lot 7, Block 4, Palm Beach Plantations, as in Plat Book 10, Page 20, all in Section 7, Twp. 44s, Rge. 43e, Palm Beach County, Florida, has caused the same to be surveyed and subdivided as shown hereon and does by these presents dedicate to the perpetual use of the public all the streets, avenues, roads and highways shown hereon, reserving unto himself, his heirs, successors, assigns or legal representatives the reversion or reversions of the same whenever abandoned by the public or discontinued by law.

In Witness WHEREOF the said owner, C.E. Bryant, has hereunto set his hand and seal this 8th day of March, A.D. 1946.

Signed, sealed and delivered in the presence of:

[Signature]

C.E. Bryant

BRYANT PARK

A RESUBDIVISION

OF LOT 8, AND THE E. 1/2 OF LOT 7, BLOCK 4, PALM BEACH PLANTATIONS
SECTION 7, TWP. 44s. - RGE. 43e.
AS IN PLAT BOOK 10, PAGE 20
PALM BEACH COUNTY, FLORIDA.

SCALE: 1"=60' MARCH, 1946.

STATE OF FLORIDA }
COUNTY OF PALM BEACH } ss.
This Plat was filed for record at 2:30 P.M.
this 23rd day of April
1946, and duly recorded in Plat Book No.
20 on page 87
J. ALEX ARNETTE, Clerk Circuit Court
By Agnes B. Bennett, D.C.

STATE OF FLORIDA }
COUNTY OF PALM BEACH } ss.

HEREBY CERTIFY that on this day personally appeared before me C.E. Bryant, to me well known and known by me to be the individual who executed the foregoing dedication, and he executed the same for the purposes herein expressed.

Witness my hand and official seal of said County and State this 8th day of March, A.D. 1946.

My commission expires: Nov. 28, 1948

J.M. Boyd
County Engineer.

APPROVED by the Board of County Commissioners
4/23/46 1946

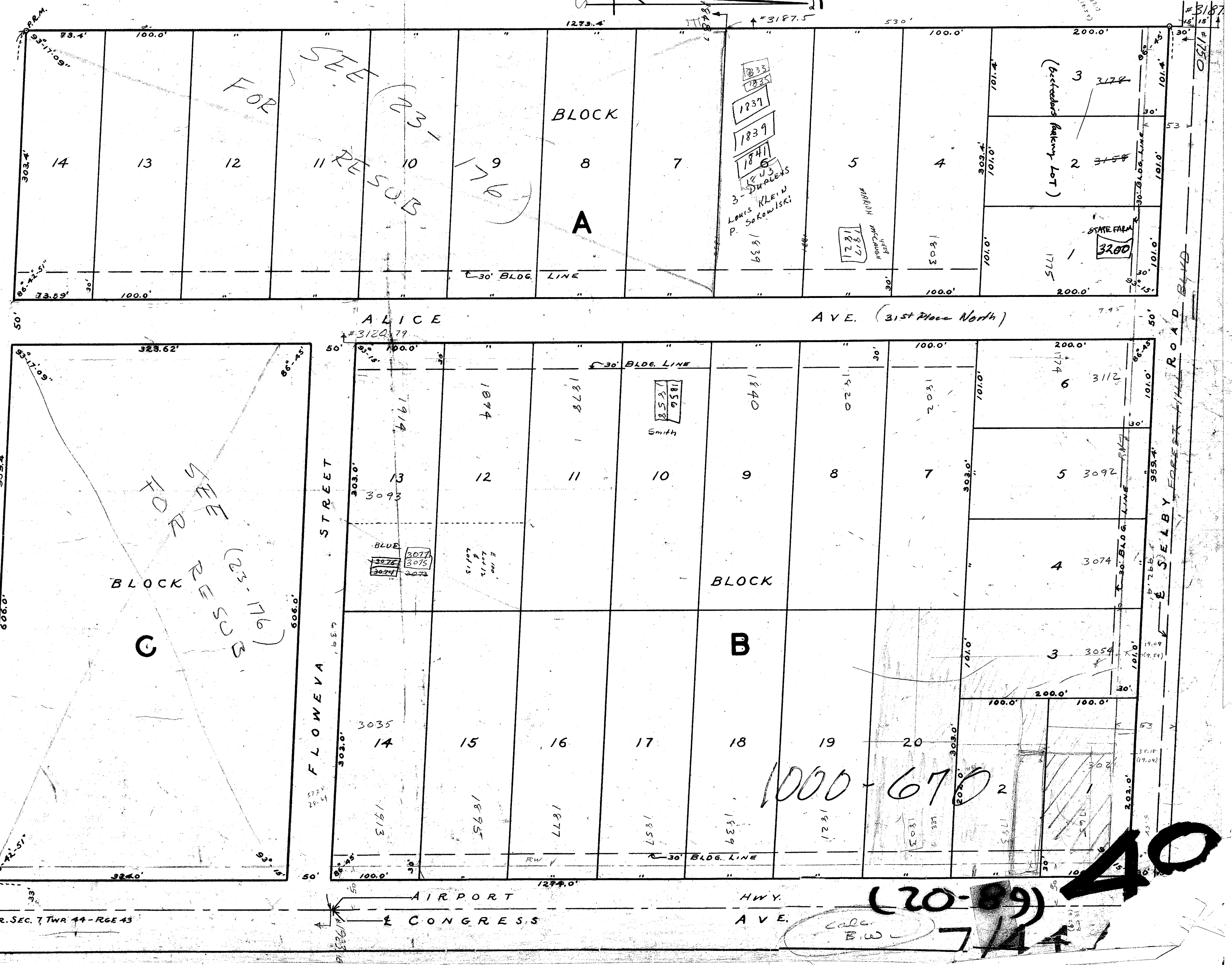
STATE OF FLORIDA }
COUNTY OF PALM BEACH } ss.

HEREBY CERTIFY that I have surveyed and plotted the tract of land shown on the attached plat as "BRYANT PARK" and that said plat is a correct representation thereof to the best of my knowledge and belief, and that Permanent Reference Monuments have been set as required by law.

August A. Weybrecht
Registered Surveyor No. 187.

Subscribed and Sworn to before me this 8th day of March, A.D. 1946.

My commission expires: Nov. 28, 1948



DRAWING NUMBER

DRAWING NUMBER

DRAWING NUMBER

40
CALC. B.W.
7/1/46