

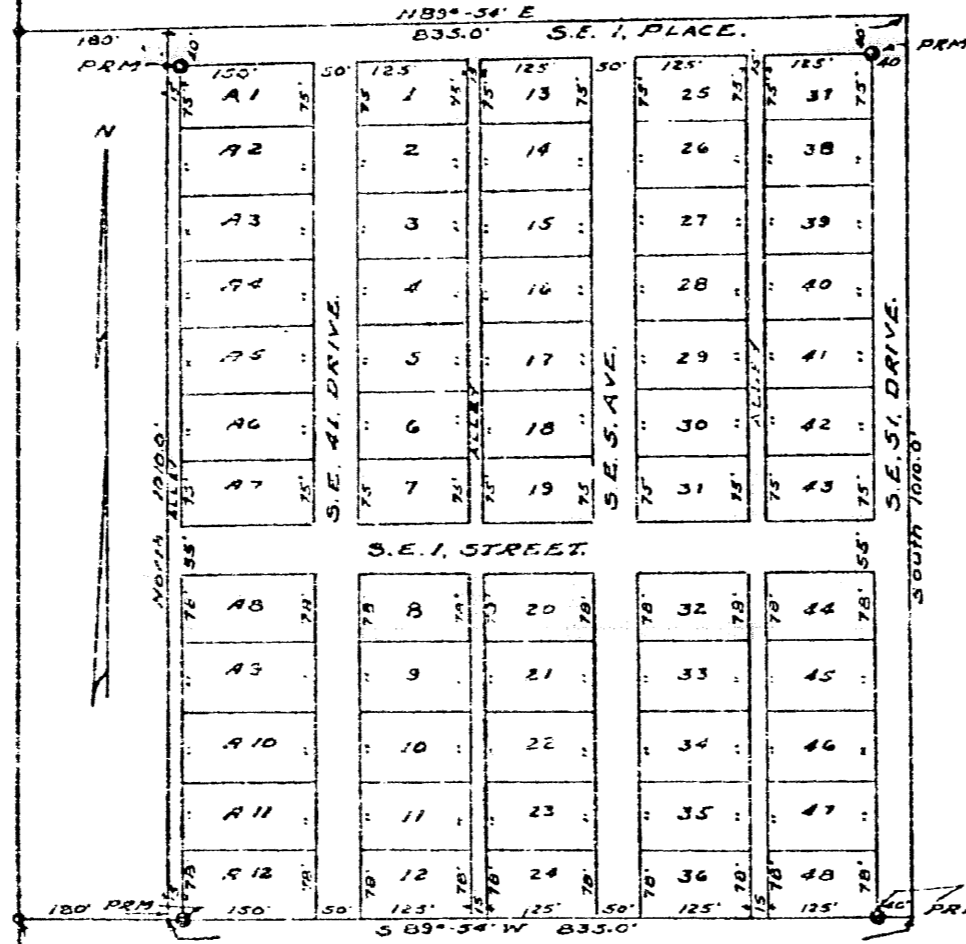
**OKEELANTA PLANTATION COMPANY'S
PLAT NO. 3.
SEC. 17 - TWP. 42, S. 04. - RGE. 37, EAST.
PALM BEACH COUNTY FLORIDA.**

SCALE: 1" = 100' 30 MAY 1946.

A RE-SUBDIVISION OF PARTS OF TRACTS 3, 4, 5 & 6,
ACCORDING TO THE OKEELANTA PLANTATION COMPANY'S SUBDIVISION
IN THE TOWN OF DANFORD, IN FRACTIONAL SECTIONS 8, 17 & 18,
TWP. 42 S. 04. R. 37 E., PALM BEACH COUNTY FLORIDA, AS RECORDED
IN DEED BOOK 16, PAGE 34, OF THE PALM BEACH COUNTY P.L.S. RECORDS.

M.C.G.
Sec. 17
TWP. 42 S. R. 37 E.

SOUTH
RINGS



SW COR
Sec. 17 - TWP. 42 S. R. 37 E.

STATE OF FLORIDA
COUNTY OF PALM BEACH 33

KNOW ALL MEN BY THESE PRESENTS, that Okeelanta Plantation Company, a corporation organized and existing under the laws of the State of Florida, the owner in fee simple of that part of land lying and being in the State of Florida and County of Palm Beach as shown on the attached Plat, as Okeelanta Plantation Company Plat No. 3, being more particularly described as follows to-wit:

THE EAST 835' OF THE WEST 1015 FEET OF THE SOUTH 20 FEET OF TRACT 3, and THE EAST 835' OF THE WEST 1015 FEET OF TRACTS 4, 5 & 6, according to the Okeelanta Plantation Company's Subdivision of Fractional Sections 8, 17 & 18, TWP. 42 S. 04. R. 37 E., PALM BEACH COUNTY FLORIDA, as recorded in DEED BOOK 16, PAGE 34, PALM BEACH COUNTY FLORIDA, RECORDS has caused the same to be surveyed and plotted as shown on the attached plat and does hereby declare to the perpetual use of the public as public highways, the streets, avenues, roads and ways shown thereon, reserving however unto its self, its successors assigns and legal representatives the reversion or remainders therein, if whenever the same shall be abandoned by the public or discontinued by law.

IN WITNESS WHEREOF it has caused these presents to be signed by its President, attested by its Secretary, and its corporate seal to be affixed thereto by and with the authority of its Board of Directors, this 31st day of May, A.D. 1946.

WITNESSES:
BY: Leo Chapman Secretary
BY: J. J. Chapman President

OKEELANTA PLANTATION COMPANY
J. J. Chapman
President

STATE OF FLORIDA
COUNTY OF PALM BEACH 33

I HEREBY CERTIFY that on this day personally appeared before me an officer duly authorized to administer oaths and take acknowledgments, J. J. Chapman and Leo Chapman, President and Secretary, respectively, of Okeelanta Plantation Company, a Florida corporation, to me well known and known to me to be the individuals described in and who executed the foregoing instrument, and that before me they executed the same as such officers of said corporation by and with the authority of its Board of Directors, and their corporation for the purpose therein expressed, and that their act was the act and deed of said corporation.

WITNESS my hand and official seal at West Palm Beach, County of Palm Beach and State of Florida this 31st day of May, 1946.

My Commission Expires: 20 January 1948.

Burton J. Smith
Notary Public

THIS IS TO CERTIFY that the attached plat is a true delineation of a survey made by me is correct to my best knowledge and belief and that permanent reference monuments have been placed as required by law.

John F. Smith
Professional Surveyor
P.L.S. No. 235.

SUBSCRIBED and sworn to before me, this 31st day of May, A.D. 1946.

John F. Smith
Notary Public.

My Commission Expires: 20 January 1948.

Approved for the City of Danese Florida, 1946
BY: W. Walker
Clerk

Approved for the Board of County Commissioners of Palm Beach County Florida, 1946
BY: J. J. Chapman
County Engineer.
No. Cert. No. _____

8048-023