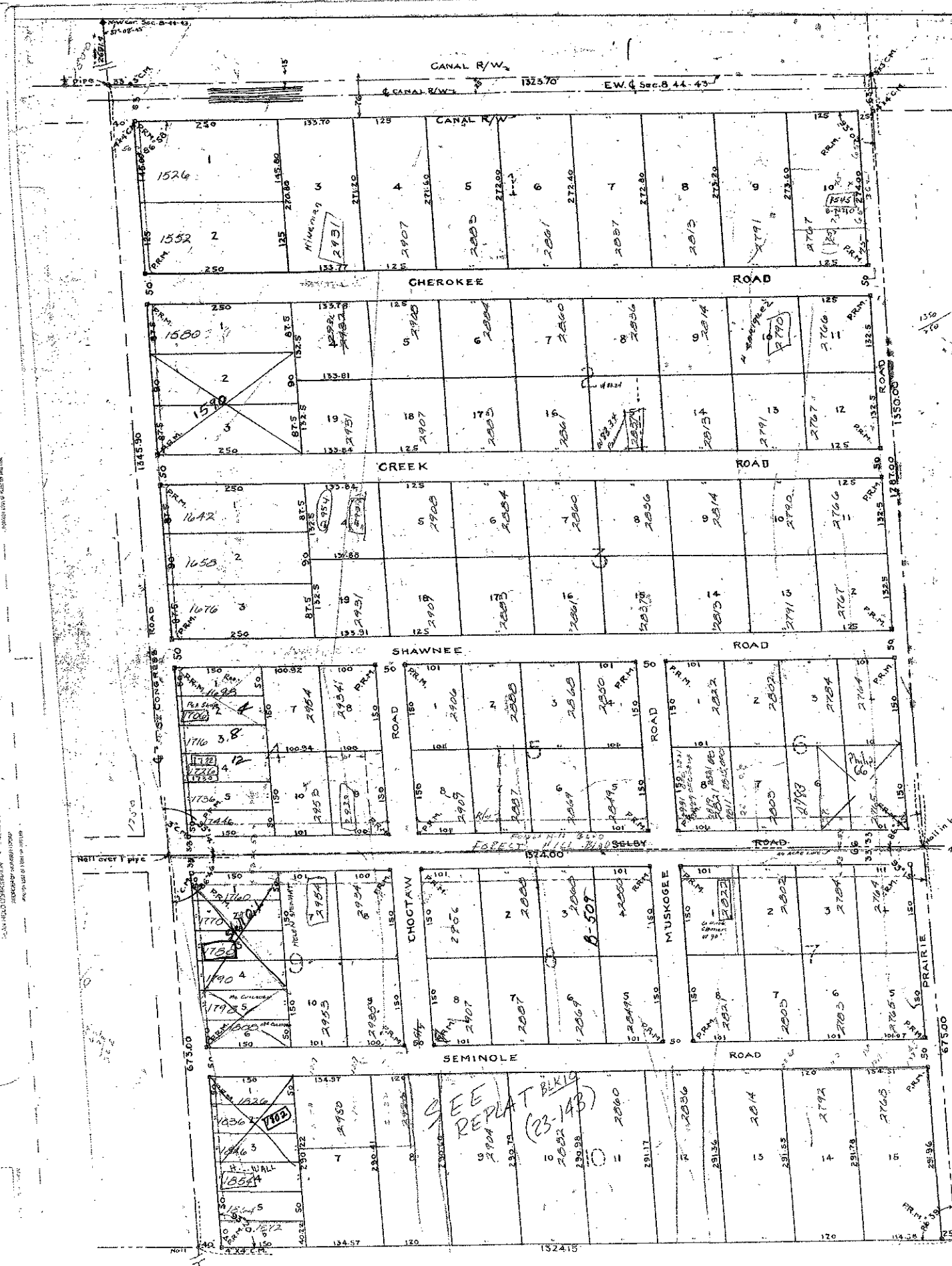


DRAWING NUMBER  
**22-7**

DRAWING NUMBER

DRAWING NUMBER



**MEADOW PARK**  
A SUBDIVISION OF THE NW 1/4, SW 1/4 & NE 1/4, SW 1/4,  
SECTION 8, T.44S, R.43E.



SCALE 1"=100'

APPROVED BY BOARD OF SUPERVISORS  
LAKE WORTH DRAINAGE DISTRICT.

APPROVED BY BOARD OF COUNTY COMMISSIONERS OF  
PALM BEACH COUNTY.

JANUARY 9 1948  
BY M. W. Thomson  
GENERAL MANAGER.

JANUARY 15 1948  
BY J. M. Boy  
COUNTY ENGINEER.

STATE OF FLORIDA  
COUNTY OF PALM BEACH } ss.  
(HEREBY CERTIFY THAT THE TRACT OF LAND SHOWN HEREON AND WHICH IS THE NW 1/4, SW 1/4, NE 1/4, SW 1/4, SEC. 8, T. 44S, R. 43E, IS A CORRECT REPRESENTATION OF A SURVEY MADE UNDER MY DIRECTION AND IS ACCURATE TO THE BEST OF MY KNOWLEDGE AND BELIEF, AND THAT PERMANENT REFERENCE MONUMENTS HAVE BEEN PLACED AS REQUIRED BY LAW.)  
Karl R. Hill  
LAND SURVEYOR FLA. CERT. 250

SUBSCRIBED AND SWORN TO BEFORE ME  
THIS 12 DAY OF JAN, A.D. 1948  
My COMMISSION EXPIRES  
MAY 25, 1951  
Marcus Hinman  
NOTARY PUBLIC

DEDICATION  
STATE OF FLORIDA  
COUNTY OF PALM BEACH } ss.  
KNOW ALL MEN BY THESE PRESENTS, THAT COUNTRY HOMES, INC. OF WEST PALM BEACH, FLA. IS THE OWNER IN FEE SIMPLE OF A TRACT OF LAND IN PALM BEACH COUNTY, FLA. DESCRIBED AS FOLLOWS: THE NW 1/4 OF THE SW 1/4 & THE NE 1/4 OF THE SW 1/4 OF THE SW 1/4 OF SECTION 8, T. 44S, R. 43E, AND BY AND WITH THE AUTHORITY OF THE BOARD OF DIRECTORS HAS CAUSED THE SAME TO BE SUBDIVIDED AND PLATTED AS SHOWN HEREON, AND HAS HEREBY DEDICATED TO THE PERPETUAL USE OF THE PUBLIC AS PUBLIC HIGHWAYS: SOUTH CONGRESS ROAD, CHOCTAW ROAD, MUSKOGEE ROAD, PRAIRIE ROAD, CHEROKEE ROAD, CREEK ROAD, SHAWNEE ROAD, SELBY ROAD, SEMINOLE ROAD.

WITNESS THE CORPORATE NAME AND SEAL OF SAID CORPORATION THIS 12 DAY OF JANUARY, A.D. 1948.  
COUNTRY HOMES, INCORPORATED  
BY Kenyon Riddle PRESIDENT.  
ATTEST: William J. Brown SECRETARY.

ACKNOWLEDGEMENT  
STATE OF FLORIDA  
COUNTY OF PALM BEACH } ss.  
BEFORE ME, A NOTARY PUBLIC OF THE STATE OF FLORIDA, PERSONS APPEARED KENYON RIDDLE AND WILBUR F. DIVINE, PERSONALLY KNOWN AND KNOWN TO BE PRESIDENT AND SECRETARY RESPECTIVELY OF COUNTRY HOMES, INC. AND THEY ACKNOWLEDGED BEFORE ME THAT THEY EXECUTED THE FOREGOING INSTRUMENT IN THEIR OFFICIAL CAPACITY AS THE ACT AND DEED OF SAID CORPORATION AND BY AND WITH THE AUTHORITY OF THE BOARD OF DIRECTORS OF SAID CORPORATION.  
WITNESS MY HAND AND OFFICIAL SEAL AT WEST PALM BEACH, FL. THIS 12 DAY OF JANUARY, A.D. 1948.  
Marcus Hinman  
NOTARY PUBLIC

MY COMMISSION EXPIRES  
MAY 25, 1951

STATE OF FLORIDA  
COUNTY OF PALM BEACH } ss.  
THIS PLAT WAS FILED FOR RECORD AT 10:45 A.M. THIS 16 DAY OF JAN, 1948, AND DULY RECORDED IN PLAT BOOK 22 PAGE 7.  
JACK ARNET JR.  
CLERK OF THE CIRCUIT COURT  
By Marjorie B. Rode D.C.

**100-532**

**22**  
**8/44/43**

**68**

**MEADOW PARK**