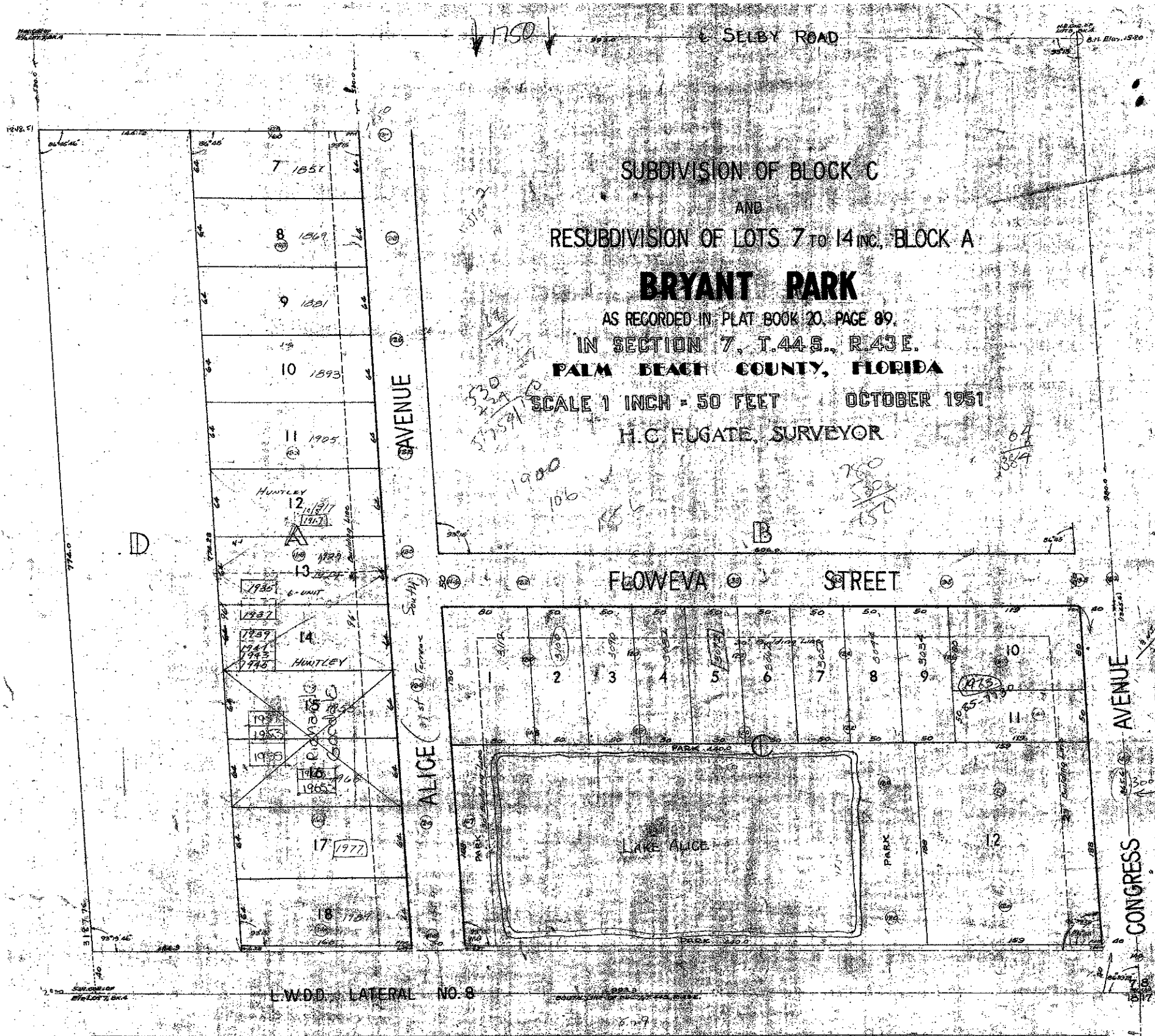


23-176



SUBDIVISION OF BLOCK C
 AND
 RESUBDIVISION OF LOTS 7 TO 14 INC. BLOCK A
BRYANT PARK
 AS RECORDED IN PLAT BOOK 20, PAGE 89,
 IN SECTION 7, T.44S., R.43E.
 PALM BEACH COUNTY, FLORIDA
 SCALE 1 INCH = 50 FEET OCTOBER 1951
 H.C. FUGATE, SURVEYOR

Approved: 26 Oct A.D. 1951.
 Board of County Commissioners,
 By: J. M. Arnold Engineer
 By: Paul Gardino Chairman

176
 STATE OF FLORIDA }
 COUNTY OF PALM BEACH }
 This instrument was duly recorded
 on the 26th day of October, 1951, and recorded
 in Book 23, Page 176.
 J. M. ARNOLD, Clerk of the Court
 By: Paul Gardino, Notary Public

STATE OF FLORIDA:
 COUNTY OF PALM BEACH:
 KNOW ALL MEN BY THESE PRESENTS, That C.E. BRYANT,
 a widower, the owner of Blocks C and Lots 7 to 14 inc., Block A, BRYANT
 PARK, a resubdivision of Lot B and the S 1/2 of Lot 7, Block A, PALM BEACH
 PLANTATIONS, SECTION 7, TOWNSHIP 44 S., RANGE 43 EAST, PALM BEACH COUNTY,
 FLORIDA, has caused this to be resubdivided and platted as shown hereon,
 and hereby dedicates to the use of the owners thereof, LAKE ALICE and the
 surrounding areas in Block C shown hereon and further dedicates to the
 perpetual use of the public for additional right of way, that strip of land
 lying between the North Right of Way Line of the Lake Worth Drainage Dist-
 rict and the South Line of Blocks A and C.
 IN WITNESS WHEREOF, he has hereunto set his
 hand and seal this 26th day of OCTOBER, A.D. 1951.

C.E. Bryant (Seal)
 C.E. BRYANT

STATE OF FLORIDA
 COUNTY OF PALM BEACH
 On this day before me, an officer duly authorized
 to administer oaths and take acknowledgments, personally appeared
 C.E. BRYANT, a widower, to me well known and known by me to
 be the person described in and who executed the foregoing deed,
 and he did acknowledge before me, that he executed the
 same, freely and voluntarily for the purpose therein expressed.
 Witness my hand and official seal of West Palm
 Beach, Florida, this 3rd day of October, A.D. 1951.
Little M. Thomas
 Notary Public, November 28, 1952.

STATE OF FLORIDA
 COUNTY OF PALM BEACH
 THIS IS TO CERTIFY, That the plat shown hereon
 is a true and correct representation of a survey of the land described
 in the dedication, made under my direction, and that said survey is
 accurate to the best of my knowledge and belief, and that permanent
 reference documents have been set as required by law.
 2000
 1000-522
 1761
 26.6.3
 REGISTERED LAND OFFICE
 FLORIDA
 SUBSCRIBED and sworn to by me this 3rd day of October, 1951.
Little M. Thomas
 Notary Public

ELEVATIONS
 0.15' TO 34' FROM S.E. CORNER AND S. SELBY ROAD
 ELEVATION FROM P.B. COUNTY SURVEY OF CONGRESS AVE.
 SURFACE ELEVATION CORNER

23
 176
 40