

DRAWING NUMBER
23-184

PLAT NO. 3 OF DELRAY GARDEN ESTATES

W 1/2 OF NW 1/4 OF NE 1/4 OF NE 1/4 & NW 1/4 OF NE 1/4 & N 1/2 OF SW 1/4 OF NE 1/4, SECTION 11, T. 46 S., R. 42 E.

PALM BEACH COUNTY, FLORIDA

MAY 1951

SCALE F=200

E. ELLIOTT GROSS & ASSOCIATES
REGISTERED ENGINEERS & SURVEYORS

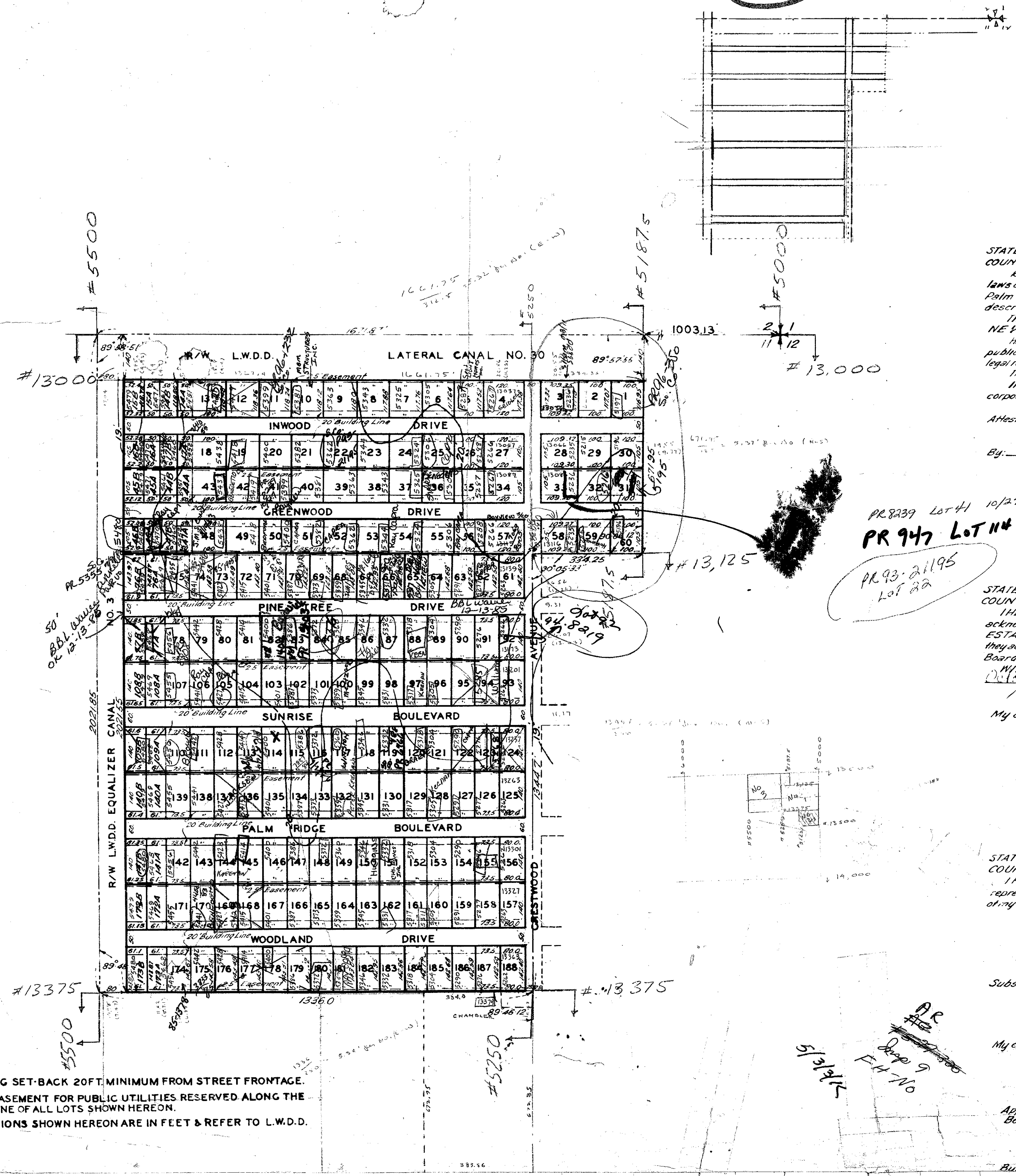
36

STATE OF FLORIDA
COUNTY OF PALM BEACH
17 Nov 1951
23 184
Maryanna B. Rees

DRAWING NUMBER

DRAWING NUMBER

DRAWING NUMBER



STATE OF FLORIDA
COUNTY OF PALM BEACH
KNOW ALL MEN BY THESE PRESENTS that PALM BEACH COUNTY ESTATES, Inc., a corporation organized under the laws of the State of New York, and duly authorized to transact business in the State of Florida, the owner of a tract of land in Palm Beach County, Florida, shown on the attached plat as Plat 3 of DELRAY GARDEN ESTATES, and more particularly described as follows, to wit:
The West 1/2 of the NW 1/4 of the NE 1/4 of the NE 1/4; and the NW 1/4 of the NE 1/4; and the North 1/2 of the SW 1/4 of the NE 1/4 of Section 11, Township 46 South, Range 42 East.
has caused the same to be surveyed and platted as shown hereon, and does hereby dedicate to the perpetual use of the Public the public highways the Boulevards, Drives and Avenue as shown hereon, reserving however unto itself, its successors, assigns, legal representatives, the reversion or reversions thereof whenever the same shall be abandoned by the public or discontinued by law.
The OWNER reserves as an easement for public utilities the rear five feet of all lots.
IN WITNESS WHEREOF, it has caused these presents to be signed by its President and attested by its Secretary, and its corporate seal to be affixed hereto by and with the authority of the Board of Directors, this 27 day of Oct. A.D. 1951.

Attest:
By: John Blackman Secretary
By: Leo Blackman President

PR 8239 Lot 41 10/27/86 Maryanna
PR 947 Lot 114 2/88 SLIT OR S/c
PR 93-21195 Lot 22

STATE OF NEW YORK
COUNTY OF NEW YORK
I HEREBY CERTIFY that on this day personally appeared before me, an officer duly authorized to administer oaths and take acknowledgments, LEO BLACKMAN and ROBERT WECKER, President and Secretary, respectively, of PALM BEACH COUNTY ESTATES, Inc., to me well known and known to be the individuals described in and who executed the foregoing dedication and they acknowledged before me that they executed the same as such officers of said corporation, by and with the approval of the Board of Directors of said corporation, and that their act and deed was the second deed of said corporation.
WITNESS my hand and official seal at Del Boca Vista in the County of New York and State of New York, this 27th day of October, A.D. 1951.

My commission expires: March 30, 1952
Severin
Notary Public

STATE OF FLORIDA
COUNTY OF PALM BEACH
I HEREBY CERTIFY that the plat shown hereon as Plat No. 3 of DELRAY GARDEN ESTATES, is a true and correct representation of a survey, made under my direction, of the above described property, and that said survey is accurate to the best of my knowledge and belief, and that Permanent Reference Monuments (P.R.M.) have been placed as required by law.

E. Elliott Gross
Registered Land Surveyor
Florida Certificate No. 1933
Subscribed and sworn to before me this 5th day of November, A.D. 1951.

My commission expires: Jan. 11, 1954
Paul J. Fallon, Jr.
Notary Public

Approved: 13 Nov. A.D. 1951.
Board of County Commissioners

By: Paul Taylor
146 142

BUILDING SET-BACK 20 FT. MINIMUM FROM STREET FRONTAGE.
2.5 FT. EASEMENT FOR PUBLIC UTILITIES RESERVED ALONG THE REAR LINE OF ALL LOTS SHOWN HEREON.
ELEVATIONS SHOWN HEREON ARE IN FEET & REFER TO L.W.D. DATUM