

DRAWING NUMBER
23-218

DRAWING NUMBER
PLAN HOLD CORPORATION • IRVINE, CALIFORNIA
RECORDED BY NUMBER 0248

DRAWING NUMBER
PLAN HOLD CORPORATION • IRVINE, CALIFORNIA
RECORDED BY NUMBER 0248

DRAWING NUMBER
PLAN HOLD CORPORATION • IRVINE, CALIFORNIA
RECORDED BY NUMBER 0248

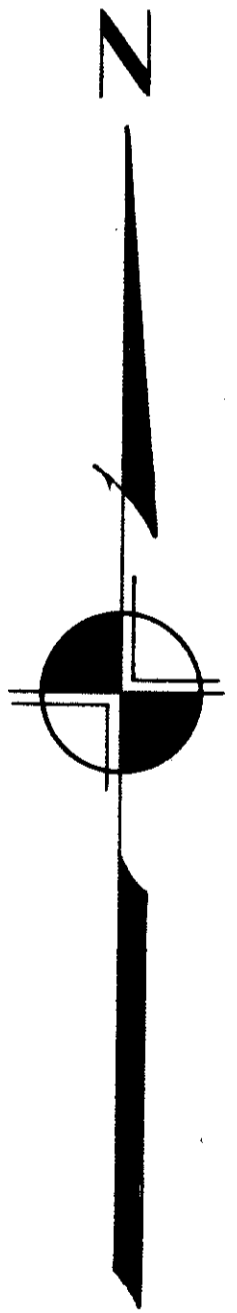
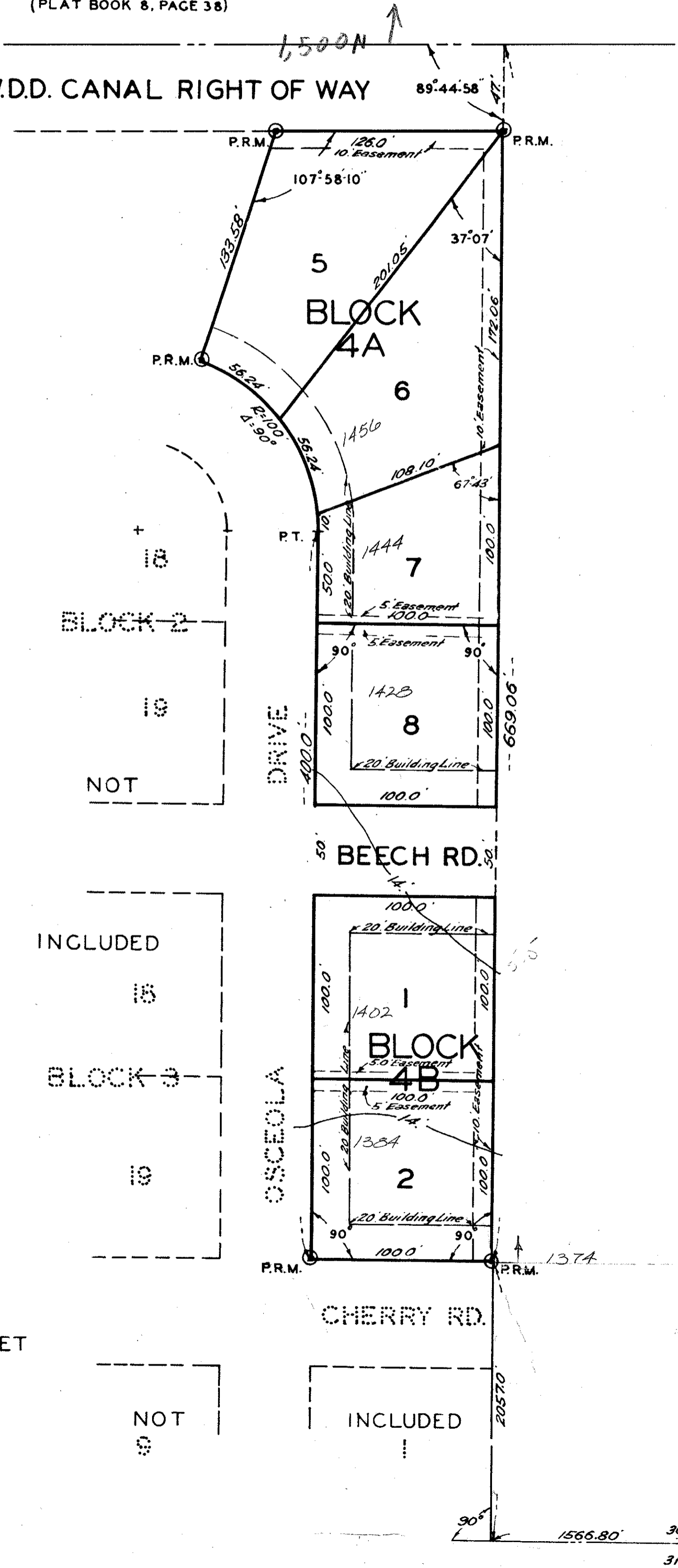
A REPLAT OF LOTS 5, 6, 7, 8, 9, 10, 11 & 12, BLOCK 4, PLAT NO. 1 OF GOLFVIEW HEIGHTS

AS RECORDED IN PLAT BOOK 23, PAGE 194, PALM BEACH COUNTY PUBLIC RECORDS
BEING PART OF THE SOUTH HALF OF SECTION 30, TOWNSHIP 43 SOUTH, RANGE 43 EAST
PALM BEACH COUNTY, FLORIDA
APRIL 1952 SCALE 1"=50'
E. ELLIOTT GROSS & ASSOCIATES
REGISTERED ENGINEER & SURVEYORS

STATE OF FLORIDA
COUNTY OF PALM BEACH
This Plat was filed for record on 10/4
the 29th day of April
1952
E. E. Gross
E. Elliott Gross & Associates
Registered Engineer & Surveyors

WESTGATE ESTATES
(PLAT BOOK 8, PAGE 38)

47. FT. L.W.D.D. CANAL RIGHT OF WAY



NOTE: ELEVATIONS SHOWN HEREON ARE IN FEET & REFER TO U.S.C.&G.S. DATUM.

STATE OF FLORIDA
COUNTY OF PALM BEACH
KNOW ALL MEN BY THESE PRESENTS that BELVEDERE HOMES, INC., a Florida Corporation, the owners of the tract of land lying and being in Palm Beach County, Florida, more particularly described as follows, to wit:
A replat of Lots 5, 6, 7, 8, 9, 10, 11 & 12, Block 4, Plat No. 1 of GOLFVIEW HEIGHTS, as recorded in Plat Book 23, page 194, Palm Beach County Public Records, lying and being in the South Half of Section 30, Township 43 South, Range 43 East,
has caused the same to be surveyed and replatted as shown hereon and does hereby dedicate to the perpetual use of the public, as public thoroughfares, the drive and road as shown hereon, and to and for the use, construction and maintenance of public utilities, the easements, all as shown hereon, reserving however unto itself, its successors, assigns or legal representatives, the reversion or reversions thereof, whenever the same shall be abandoned by the public or discontinued by law.
IN WITNESS WHEREOF, it has caused these presents to be signed in its name by its President and attested by its Secretary, and its corporate seal to be affixed hereto by and with the authority of its Board of Directors, this 23th day April A. D. 1952.

BELVEDERE HOMES INC.

Attest:
By: Herbert A. Ross
Secretary

By: Richard E. Ross
President

STATE OF FLORIDA
COUNTY OF PALM BEACH
I HEREBY CERTIFY that on this day personally appeared before me, an officer duly authorized to administer oaths and take acknowledgments, RICHARD E. ROSS and HERBERT A. ROSS, President and Secretary, respectively, of BELVEDERE HOMES INC., a Florida Corporation, to me well known and known to me to be the individuals described in and who executed the foregoing dedication, and they acknowledged before me that they executed the same as such officers of said Corporation and with the authority of the Board of Directors of said Corporation for the purposes therein expressed, and that their act and deed was the act and deed of said Corporation.
WITNESS MY hand and official seal at West Palm Beach, County of Palm Beach and State of Florida, this 28th day of April A.D. 1952.

Chas. J. Follin Jr.
Notary Public

My commission expires: Jan. 11, 1954

STATE OF FLORIDA
COUNTY OF PALM BEACH
I HEREBY CERTIFY that the plat shown hereon is a true and correct representation of a survey made under my direction, and that said survey is accurate to the best of my knowledge and belief, and that Permanent Reference Monuments (P.R.M.) have been placed as required by law.

James S. McCreary
Registered Land Surveyor
Florida Certificate No. 7877

Subscribed and sworn to before me this 28th day of April A.D. 1952.

Chas. J. Follin Jr.
Notary Public

My commission expires: Jan. 11, 1954

Approved: 28 APR 1952
Board of County Commissioners

James C. Jones
Chairman

By: E. E. Gross
County Engineer

1000-567

23
218
30143 743