

DRAWING NUMBER  
25  
PLAN HOLD CORPORATION  
REGISTERED BY NUMBER 02048

DRAWING NUMBER  
PLAN HOLD CORPORATION  
REGISTERED BY NUMBER 02048

DRAWING NUMBER  
PLAN HOLD CORPORATION  
REGISTERED BY NUMBER 02048

DRAWING NUMBER  
PLAN HOLD CORPORATION  
REGISTERED BY NUMBER 02048

# PLAT OF LAKE CLARKE MANOR

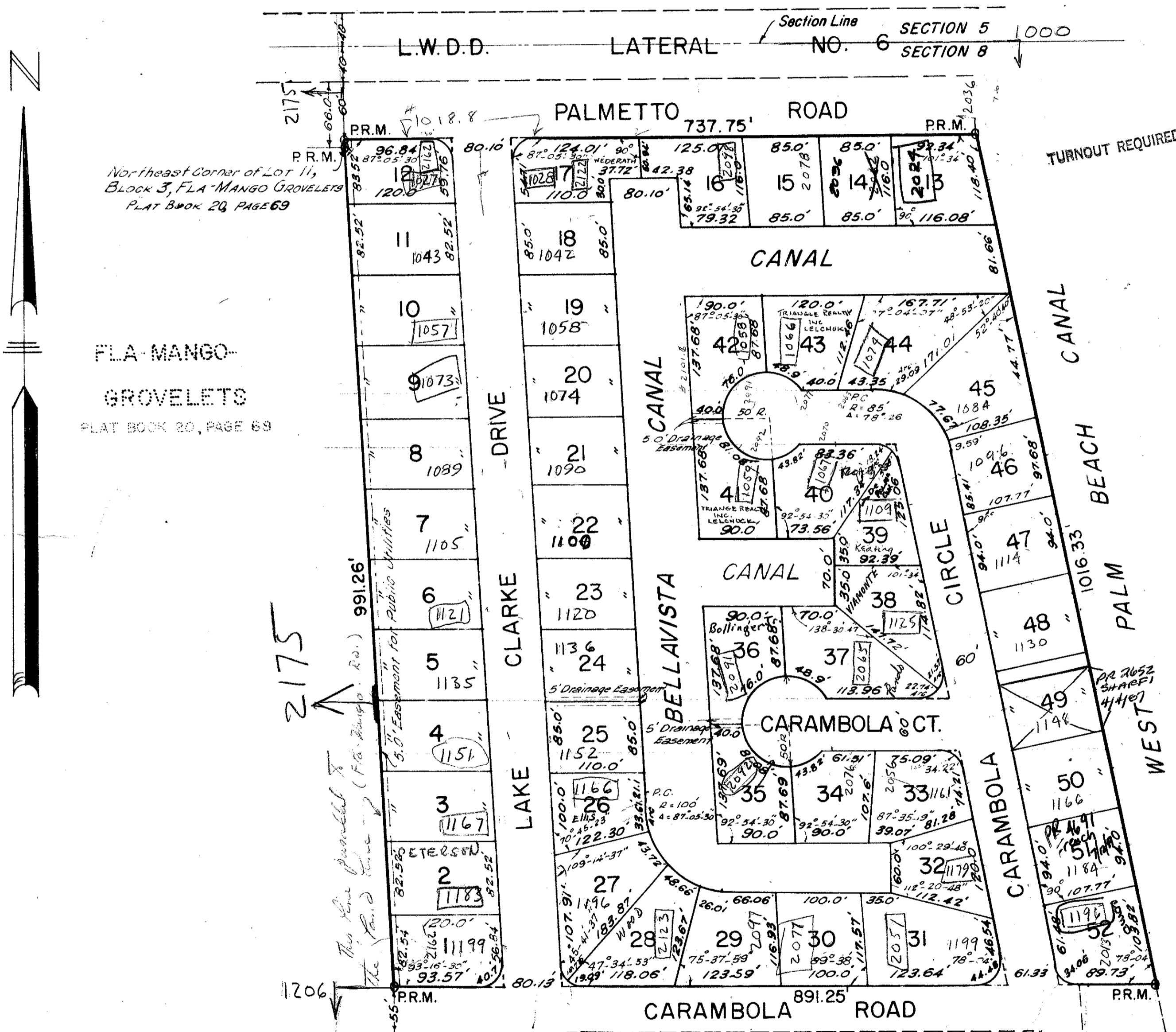
BEING A REPLAT OF TRACT I, LAKE CLARKE SHORE, PLAT BOOK 22, PAGE 52  
IN SECTION 8, TOWNSHIP 44 SOUTH, RANGE 43 EAST  
PALM BEACH COUNTY, FLORIDA  
FEBRUARY 1958 SCALE 1"=100'  
E. ELLIOTT GROSS & ASSOCIATES  
REGISTERED ENGINEERS & LAND SURVEYORS

17

See Back

180  
STATE OF FLORIDA  
COUNTY OF PALM BEACH  
FILED FOR RECORD  
29 April 1958  
25 180  
ALMA HARRIS, Clerk  
Bertha M. Wilson

WEST PALM HARBOR  
PLAT BOOK 23, PAGE 217



FLA-MANGO GROVELETS  
PLAT BOOK 20, PAGE 69



STATE OF FLORIDA  
COUNTY OF PALM BEACH SS  
KNOW ALL MEN BY THESE PRESENTS, that LELCO, INC.; SHERIDAN, INC.; RELIABLE MORTGAGE CO., all of which are Florida Corporations, the owners of the Tract of land lying and being in Section 8, Township 44 South, Range 43 East, Palm Beach County, Florida, shown hereon as LAKE CLARKE MANOR, and more particularly described as follows, to wit:

TRACT I LAKE CLARKE SHORE, according to the plat thereof on file in the office of the Clerk of the Circuit Court in and for Palm Beach County, Florida, recorded in Plat Book 22, Page 52, have caused the same to be surveyed and platted as shown hereon, and do hereby dedicate to the perpetual use of the public, as public highways, the streets shown hereon.  
IN WITNESS WHEREOF, the said Corporations have caused these presents to be signed by their respective President and attested by their respective Secretary, and their corporate seals to be affixed hereto by and with the authority of their Board of Directors, this 8th day of APRIL, A.D. 1958.

Attest:  
By Sheldon H. Lelchuk  
Secretary  
Attest:  
By Sheldon H. Lelchuk  
Secretary  
Attest:  
By Sheldon H. Lelchuk  
Secretary  
LE. CO, INC.  
By Herbert S. Lelchuk  
President  
SHERIDAN, INC.  
By Herbert S. Lelchuk  
President  
RELIABLE MORTGAGE CO.  
By Herbert S. Lelchuk  
President

STATE OF FLORIDA  
COUNTY OF PALM BEACH SS  
I HEREBY CERTIFY that on this day personally appeared before me an officer duly authorized to administer oaths and take acknowledgments HERBERT S. LELCHUK and SHELDON H. LELCHUK, President and Secretary, respectively, of LELCO, INC.; SHERIDAN, INC.; RELIABLE MORTGAGE CO., all of which are Florida Corporations, to me well known and known to me to be the individuals described in and who executed the foregoing dedication, and they acknowledged before me that they executed the same as such officers of said Corporations by and with the authority of the Board of Directors of said Corporation for the purposes therein expressed.  
WITNESS my hand and official seal at West Palm Beach, County of Palm Beach and State of Florida, this 8th day of APRIL, A.D. 1958.

My Commission expires Jan. 13, 1962

STATE OF FLORIDA  
COUNTY OF PALM BEACH SS  
I HEREBY CERTIFY that the plat shown hereon is a true and correct representation of a survey, made under my direction of the foregoing described property, and that said survey is accurate to the best of my knowledge and belief, and that Permanent Reference Monuments (P.R.M.) have been placed as required by law.

1000-377

Subscribed and sworn to before me this 8th day of APRIL, 1958

My Commission expires Jan. 13, 1962

APR 14, A.D. 1958  
Board of County Commissioners

8/4 4/43  
125-180  
48

NOTE:  
Building Set Back Lines, Requirements to conform to R-1A zoning, adopted May 13, 1957.  
All lot corners rounded with 25ft radius unless otherwise noted.  
No Trees, Shrubs, Buildings or Permanent Construction permitted on Drainage Easements.