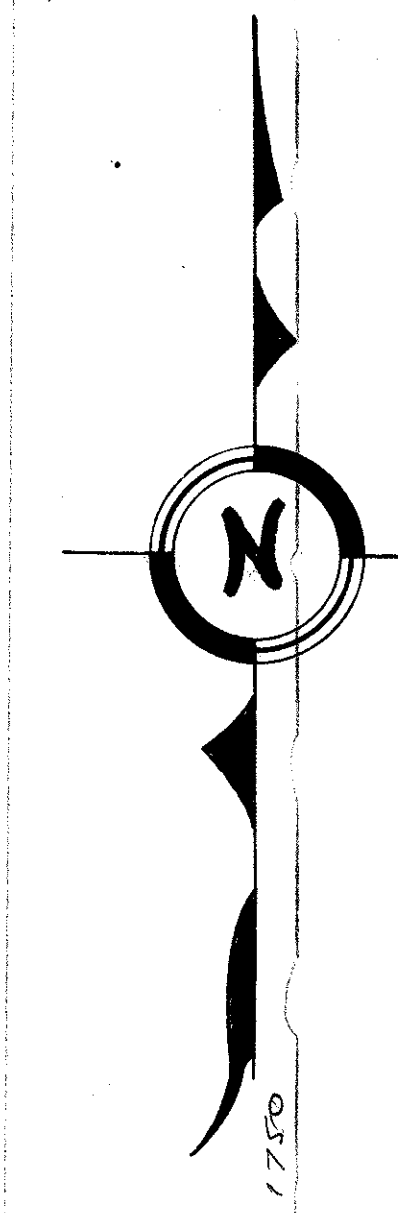


DRAWING NUMBER
25-226

DRAWING NUMBER

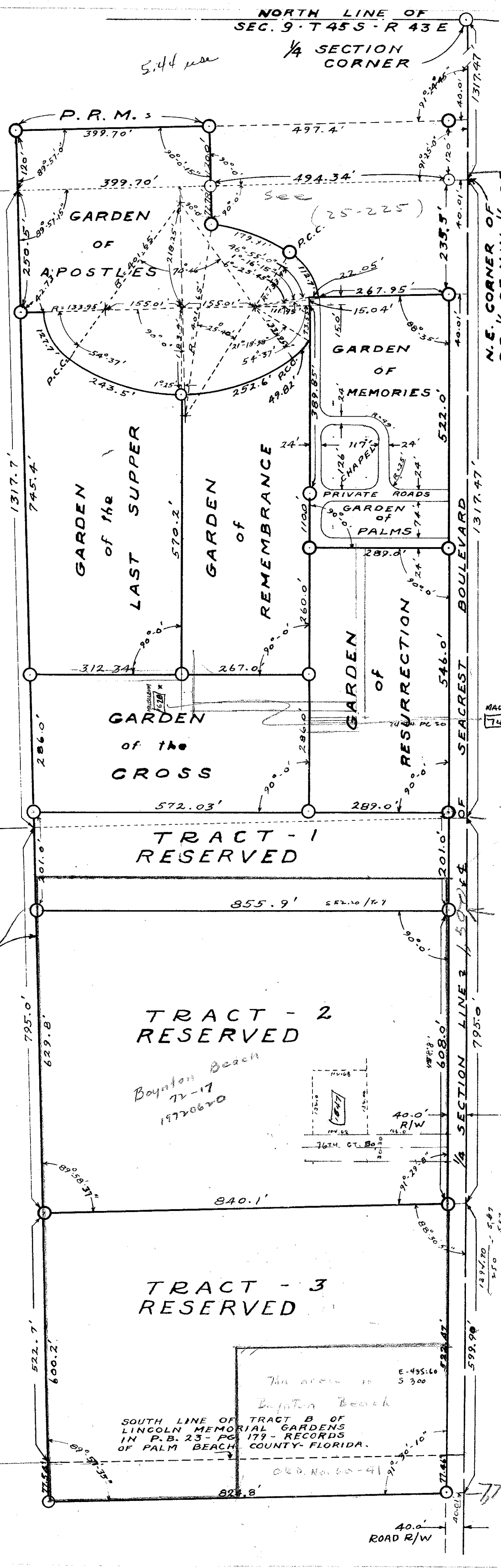
DRAWING NUMBER

DRAWING NUMBER



SOUTH LINE AND NORTH LINE OF LINCOLN MEMORIAL GARDENS OF TRACT A OF PLAT BOOK 23 AT PAGE 179 - RECORDS OF PALM BEACH COUNTY - FLORIDA

S.R. 9 R/W



PLAT A of PALM BEACH MEMORIAL PARK A CEMETERY IN PALM BEACH COUNTY - FLORIDA.

226

STATE of FLORIDA :
COUNTY of PALM BEACH :
THIS PLAT WAS FILED FOR
RECORD AT 4:31 P.M. THIS
28 DAY OF AUG. 1958
AND DULY RECORDED IN PLAT
BOOK NO. 25 ON PAGE 226
J. ALEX ARNETTE
CLERK OF CIRCUIT COURT
By *Bertha M. Gibson D.*

BEING A REPLAT OF PART OF TRACT A, AND ALL OF TRACT B, AND PART OF TRACT C OF LINCOLN MEMORIAL GARDENS AS SHOWN IN PLAT BOOK 23 AT PAGE 179, AND ALSO A REPLAT OF LINCOLN CEMETERY AS SHOWN IN PLAT BOOK 24 AT PAGES 250 AND 251, PUBLIC RECORDS OF PALM BEACH COUNTY, FLORIDA, PLUS A PART OF THE NORTHEAST QUARTER OF THE NORTHWEST QUARTER OF SECTION 9 - T 45 S - R 43 E.

STATE OF FLORIDA : SS
COUNTY OF PALM BEACH :

KNOW ALL MEN BY THESE PRESENTS THAT PALM BEACH MEMORIAL PARK, INC. A CORPORATION ORGANIZED AND EXISTING UNDER THE LAWS OF THE STATE OF FLORIDA, IS THE OWNER IN FEE SIMPLE, SUBJECT TO CERTAIN BURIAL RIGHTS NOT HEREBY AFFECTED, OF A TRACT OF LAND SHOWN HEREON LYING AND BEING IN PALM BEACH COUNTY, FLORIDA, AND MORE PARTICULARLY DESCRIBED AS FOLLOWS: COMMENCING AT THE NORTHEAST CORNER OF THE NORTHWEST QUARTER OF SECTION 9, T 45 S, R 43 E, RUN THENCE SOUTHWARD WITH THE EAST LINE OF SAID NORTHWEST QUARTER OF SECTION 9 A DISTANCE OF 1317.47' TO A POINT WHICH IS AT THE NORTHEAST CORNER OF LINCOLN MEMORIAL GARDENS AS SHOWN IN PLAT BOOK 23 AT PAGE 179, RECORDS OF PALM BEACH COUNTY, FLORIDA; RUN THENCE WESTWARD WITH THE NORTH LINE OF TRACT A OF SAID PLAT A DISTANCE OF 534.34' TO THE R.O.B.; RUN THENCE NORTHWARD AT RIGHT ANGLES TO SAID NORTH LINE OF TRACT A A DISTANCE OF 120.0' TO A POINT; RUN THENCE WESTWARD, TURNING AN ANGLE FROM SOUTH TO WEST OF 90° 0' 15", A DISTANCE OF 399.70' TO AN INTERSECTION WITH THE EAST BIGHT OF WAY LINE OF STATE ROAD 9, WHICH BIGHT OF WAY LINE IS ALSO AN EXTENSION NORTHWARD OF THE WEST LINE OF SAID TRACT A AT THIS POINT; RUN THENCE SOUTHWARD WITH SAID EAST BIGHT OF WAY LINE OF STATE ROAD 9, WHICH IS ALSO THE WEST LINE OF TRACTS A, B, AND C OF LINCOLN MEMORIAL GARDENS, A DISTANCE OF 2832.94' TO A POINT IN THE WEST LINE OF TRACT C, WHICH POINT IS 77.54' SOUTH OF THE NORTHWEST CORNER OF SAID TRACT C; RUN THENCE EASTWARD A DISTANCE OF 824.8' TO AN INTERSECTION WITH THE EAST LINE OF SAID TRACT C AT A POINT 77.46' SOUTH OF THE NORTHEAST CORNER OF SAID TRACT C; RUN THENCE EASTWARD IN A CONTINUATION OF SAID LINE A DISTANCE OF 40.01' TO AN INTERSECTION WITH THE NORTH-SOUTH 1/4 LINE OF SECTION 9, WHICH 1/4 LINE IS ALSO THE CENTERLINE OF SEACREST BOULEVARD; RUN THENCE NORTHWARD WITH SAID 1/4 LINE OF SECTION 9 A DISTANCE OF 2476.9' TO A POINT; RUN THENCE WESTWARD PARALLEL WITH THE NORTH LINE OF SAID TRACT A OF LINCOLN MEMORIAL GARDENS A DISTANCE OF 307.96' TO A POINT IN A CURVE CONCAVE TO THE SOUTHWEST AND WITH A RADIUS OF 133.95' AND WITH THE CENTER IN A LINE 15' SOUTH OF AND PARALLEL TO THIS COURSE; RUN THENCE NORTHWESTERLY WITH SAID CURVE A DISTANCE OF 112.74' TO A POINT OF COMPOUND CURVATURE; RUN THENCE NORTHWESTERLY WITH A CURVE CONCAVE TO THE SOUTHWEST AND HAVING A RADIUS OF 401.65', A DISTANCE OF 179.91' TO A POINT; RUN THENCE NORTHERLY, TURNING AN ANGLE FROM EAST TO NORTH OF 99° 43' 0" FROM THE TANGENT TO THE LAST DESCRIBED CURVE AT SAID POINT, A DISTANCE OF 72.78' TO A POINT IN THE NORTH LINE OF SAID TRACT A, WHICH IS THE POINT OF BEGINNING; AND HAS CAUSED THE SAME TO BE SURVEYED AND PLATTED AS SHOWN HEREON, AND DOES HEREBY DEDICATE TO PUBLIC USE IN PERPETUITY FOR HIGHWAY PURPOSE A RIGHT OF WAY FORTY FEET IN WIDTH AND DESIGNATED AS SEACREST BOULEVARD HEREON.

IN WITNESS WHEREOF IT HAS CAUSED THESE PRESENTS TO BE SIGNED BY ITS VICE PRESIDENT AND ATTESTED BY ITS SECRETARY AND ITS CORPORATE SEAL TO BE AFFIXED HERETO BY AND WITH THE AUTHORITY OF ITS BOARD OF DIRECTORS THIS 20th DAY OF AUGUST IN THE YEAR 1958, A.D.

ATTEST :
By *William H. Dyer*
SECRETARY

PALM BEACH MEMORIAL PARK, Inc.
By *Mildred S. Dyer*
VICE PRESIDENT

APPROVED BY THE BOARD OF COUNTY COMMISSIONERS FOR PALM BEACH COUNTY, FLORIDA, THIS 25th DAY OF AUGUST, 1958, A.D.

By *Robert Michael*
CHAIRMAN.
By *Almond Headley*
COUNTY ENGINEER.

STATE of FLORIDA : SS
COUNTY of PALM BEACH :
I HEREBY CERTIFY THAT THE PLAT SHOWN HEREON IS A TRUE AND CORRECT REPRESENTATION OF A SURVEY OF THE PROPERTY DESCRIBED HEREON AND THAT PERMANENT REFERENCE MONUMENTS HAVE BEEN SET AS REQUIRED BY LAW, UNDER MY DIRECTION, AND THAT IT IS ACCURATE TO THE BEST OF MY KNOWLEDGE AND BELIEF.

B. Ben Herr
REGISTERED LAND SURVEYOR
FLORIDA CERTIFICATE NO. 8

SUBSCRIBED AND SWORN TO BEFORE ME THIS 20th DAY OF August, 1958, A.D.
Mauda Widale
NOTARY PUBLIC, STATE OF FLORIDA.
MY COMMISSION EXPIRES July 29, 1960

STATE of FLORIDA : SS
COUNTY of PALM BEACH :
I HEREBY CERTIFY THAT ON THIS DAY PERSONALLY APPEARED BEFORE ME, AN OFFICER OF THE STATE OF FLORIDA DULY AUTHORIZED TO ADMINISTER OATHS AND TAKE ACKNOWLEDGEMENTS, *MILDRED S. DYER and WILLIAM H. DYER*, VICE PRESIDENT and SECRETARY RESPECTIVELY, OF PALM BEACH MEMORIAL PARK, INC., A CORPORATION TO ME WELL KNOWN AND KNOWN TO ME TO BE THE INDIVIDUALS AND OFFICERS DESCRIBED IN, AND WHO EXECUTED THE FOREGOING INSTRUMENT; AND THEY HAVE ACKNOWLEDGED BEFORE ME THAT THEY EXECUTED THE FOREGOING INSTRUMENT AS OFFICERS OF SAID CORPORATION BY AND WITH THE AUTHORITY OF THE BOARD OF DIRECTORS TO THE PURPOSE EXPRESSED, AND THAT THEIR ACTS AND DEEDS ARE THE ACTS AND DEEDS OF SAID CORPORATION.

WITNESS MY HAND AND OFFICIAL SEAL THIS 20th August 1958, AT Palm Beach, COUNTY OF PALM BEACH, STATE OF FLORIDA.

Mauda Widale
NOTARY PUBLIC
STATE OF FLORIDA.
COMMISSION EXPIRES 7/29/60
1000-387
9/45/43

BEN HERR
REGISTERED ENGINEER
AND SURVEYOR
PALM BEACH
FLORIDA