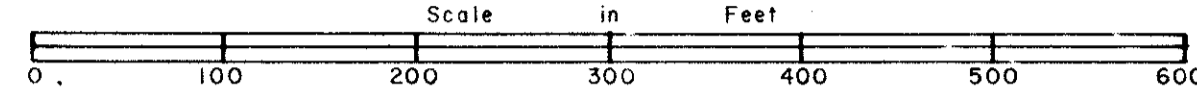


JUPITER RIVER ESTATES

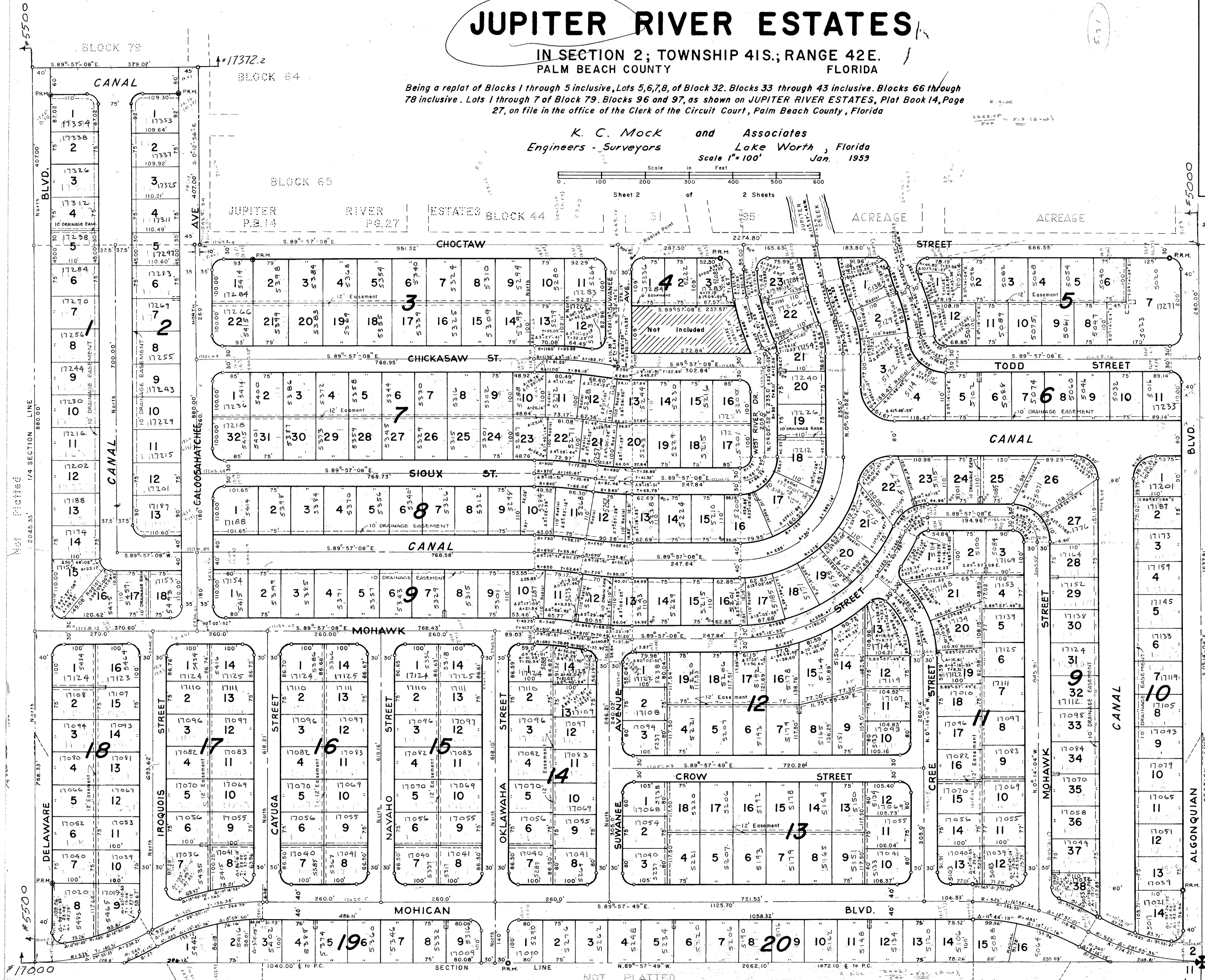
IN SECTION 2; TOWNSHIP 41S.; RANGE 42E.
PALM BEACH COUNTY FLORIDA

Being a replat of Blocks 1 through 5 inclusive, Lots 5, 6, 7, 8, of Block 32. Blocks 33 through 43 inclusive. Blocks 66 through 78 inclusive. Lots 1 through 7 of Block 79. Blocks 96 and 97, as shown on JUPITER RIVER ESTATES, Plat Book 14, Page 27, on file in the office of the Clerk of the Circuit Court, Palm Beach County, Florida

K. C. Mock and Associates
Engineers - Surveyors
Scale 1" = 100' Jan. 1953



Sheet 2 of 2 Sheets



STATE OF FLORIDA
COUNTY OF PALM BEACH
This Plat was filed for record on _____ M
this _____ day of _____
1953 and duly recorded in Plat Book No. _____
on page _____
J. ALEX ARNETTE Clerk Circuit Court
By 23-37 D.C.

1000-282
26
37
30
1700
2/4/54

DRAWING NUMBER
26-37

DRAWING NUMBER

DRAWING NUMBER

DRAWING NUMBER

PLANNED CORPORATION - PALM BEACH, FLORIDA
REGISTERED PROFESSIONAL ENGINEER - SURVEYOR
REGISTERED PROFESSIONAL ENGINEER - SURVEYOR

PLANNED CORPORATION - PALM BEACH, FLORIDA
REGISTERED PROFESSIONAL ENGINEER - SURVEYOR
REGISTERED PROFESSIONAL ENGINEER - SURVEYOR

PLANNED CORPORATION - PALM BEACH, FLORIDA
REGISTERED PROFESSIONAL ENGINEER - SURVEYOR
REGISTERED PROFESSIONAL ENGINEER - SURVEYOR

PLANNED CORPORATION - PALM BEACH, FLORIDA
REGISTERED PROFESSIONAL ENGINEER - SURVEYOR
REGISTERED PROFESSIONAL ENGINEER - SURVEYOR