

DRAWING NUMBER  
26-50

# REPLAT OF LOTS 56-62, AND 76-84 INCL.

## PARADISE PORT

AS RECORDED IN P.B. 26 PG. 26 PALM BEACH COUNTY PUBLIC RECORDS  
LYING IN THE EAST HALF OF THE SOUTHWEST QUARTER SECTION 20, TOWNSHIP 41 SOUTH, RANGE 43 EAST

PALM BEACH COUNTY, FLORIDA

APRIL, 1959 SCALE: 1"=100'

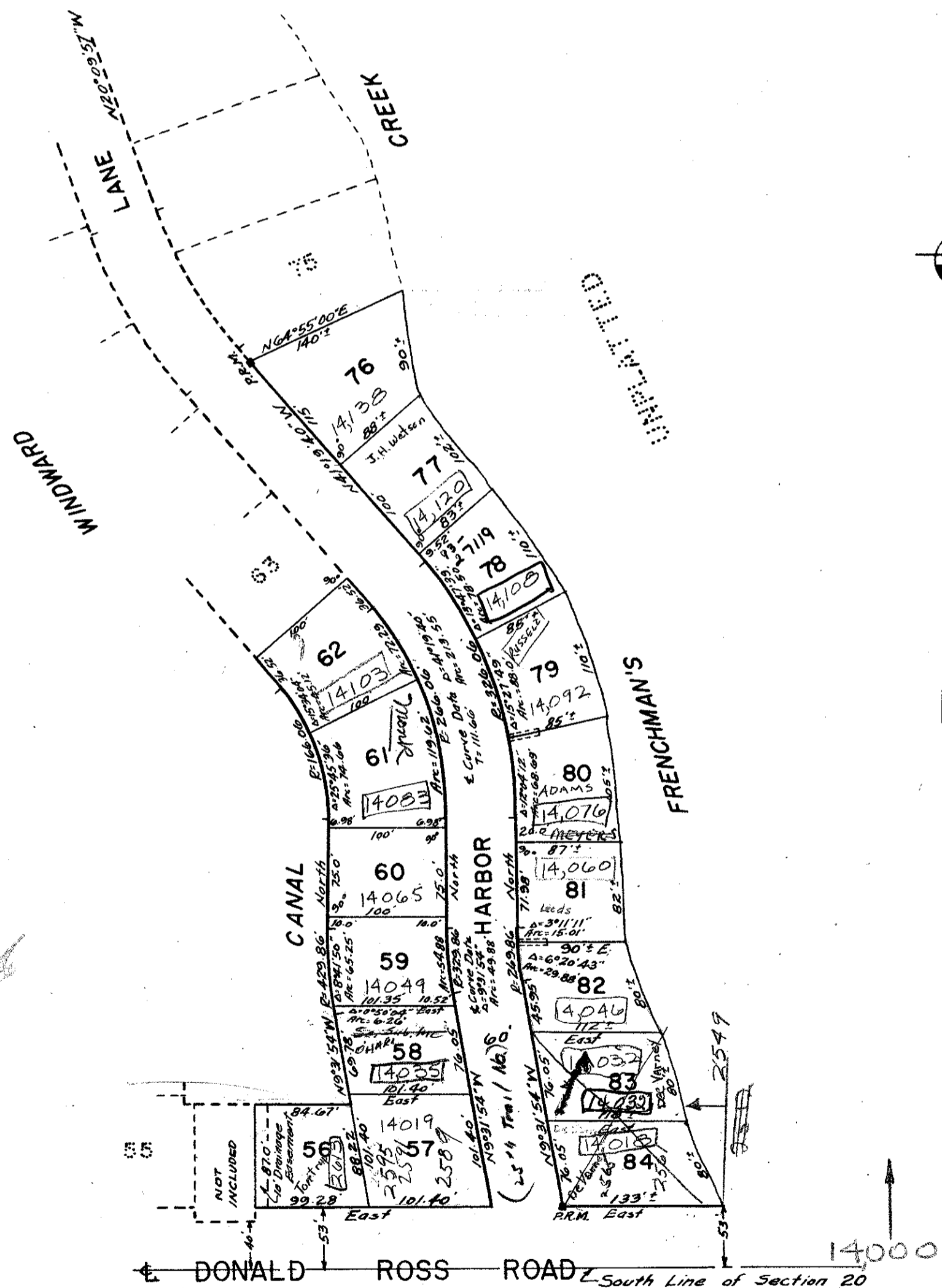
E. ELLIOTT GROSS & ASSOCIATES  
REGISTERED ENGINEERS & SURVEYORS

50  
48  
8. A  
may  
59  
26 -50  
Bertha M. Gibson

PARADISE PORT  
Pg. 26  
P.B. 26

DRAWING NUMBER

PLAN HOLD CORPORATION • IRVINE, CALIFORNIA



PARADISE PORT  
Pg. 26  
P.B. 26

DRAWING NUMBER

PLAN HOLD CORPORATION • IRVINE, CALIFORNIA

STATE OF FLORIDA  
COUNTY OF PALM BEACH

KNOW ALL MEN BY THESE PRESENTS that DEITZ ENTERPRISES, Inc., a Florida Corporation the owner of the tract of land lying and being in the Southwest Quarter of Section 20, Township 41 South, Range 43 East, Palm Beach County, Florida, shown hereon as REPLAT of LOTS 56-62, and 76-84 INCL. PARADISE PORT and more particularly described as follows, to wit:

Lots 56-62, and 76-84 incl. of PARADISE PORT, as recorded in Plat Book 26, Page 26 in the Public Records in and, for the County of Palm Beach, Florida.

has caused the same to be surveyed and platted as shown hereon, and does hereby dedicate to the perpetual use of the public the road and easements as shown hereon.

IN WITNESS WHEREOF the said Corporation has caused these presents to be signed by its President and attested by its Secretary, and its Corporate Seal to be affixed hereto, by and with the authority of its Board of Directors this 21 day of April A.D. 1959.

Attest  
By: Rosa E. Deitz  
Secretary

DEITZ ENTERPRISES, INC.  
By: George A. Deitz  
President

STATE OF FLORIDA  
COUNTY OF PALM BEACH

I HEREBY CERTIFY that on this day personally appeared before me, an officer duly authorized to administer oaths and take acknowledgements, GEORGE A. DEITZ and ROSA E. DEITZ, President and Secretary respectively, of DEITZ ENTERPRISES, INC., to me well known and known to me to be the individuals described in and who executed the foregoing dedication, and they acknowledged before me that they executed the same as such officers of said Corporation, by and with the authority of the Board of Directors of said Corporation for the purposes therein expressed, and that their act and deed was the act and deed of said Corporation.

WITNESS my hand and official seal at West Palm Beach, County of Palm Beach, and State of Florida this 21 day of April A.D. 1959.

My Commission expires: 10-24-61

Mathew S. Grott  
Notary Public

STATE OF FLORIDA  
COUNTY OF PALM BEACH

I HEREBY CERTIFY that the plat shown hereon is a true and correct representation of a survey, made under my direction, of the hereon described property and that said survey is accurate to the best of my knowledge and belief and that permanent reference monuments (P.R.M.) have been placed as required by law.

Subscribed and sworn to before me this 21 day of April A.D. 1959.

My Commission expires: 10-24-61

James D. Castro  
Registered Land Surveyor  
Florida Certificate No. 747

Mathew S. Grott  
Notary Public

Approved APRIL 27 A.D. 1959  
Board of County Commissioners

By: Lace Lyttel  
Chairman

By: Stephen R. Moadit  
County Engineer

1000-293

NOTE:  
1. There shall be no buildings on utility easements.  
2. There shall be no buildings of any kind of construction on easement.  
3. Burial  
4. And

26-50  
20/41/43

