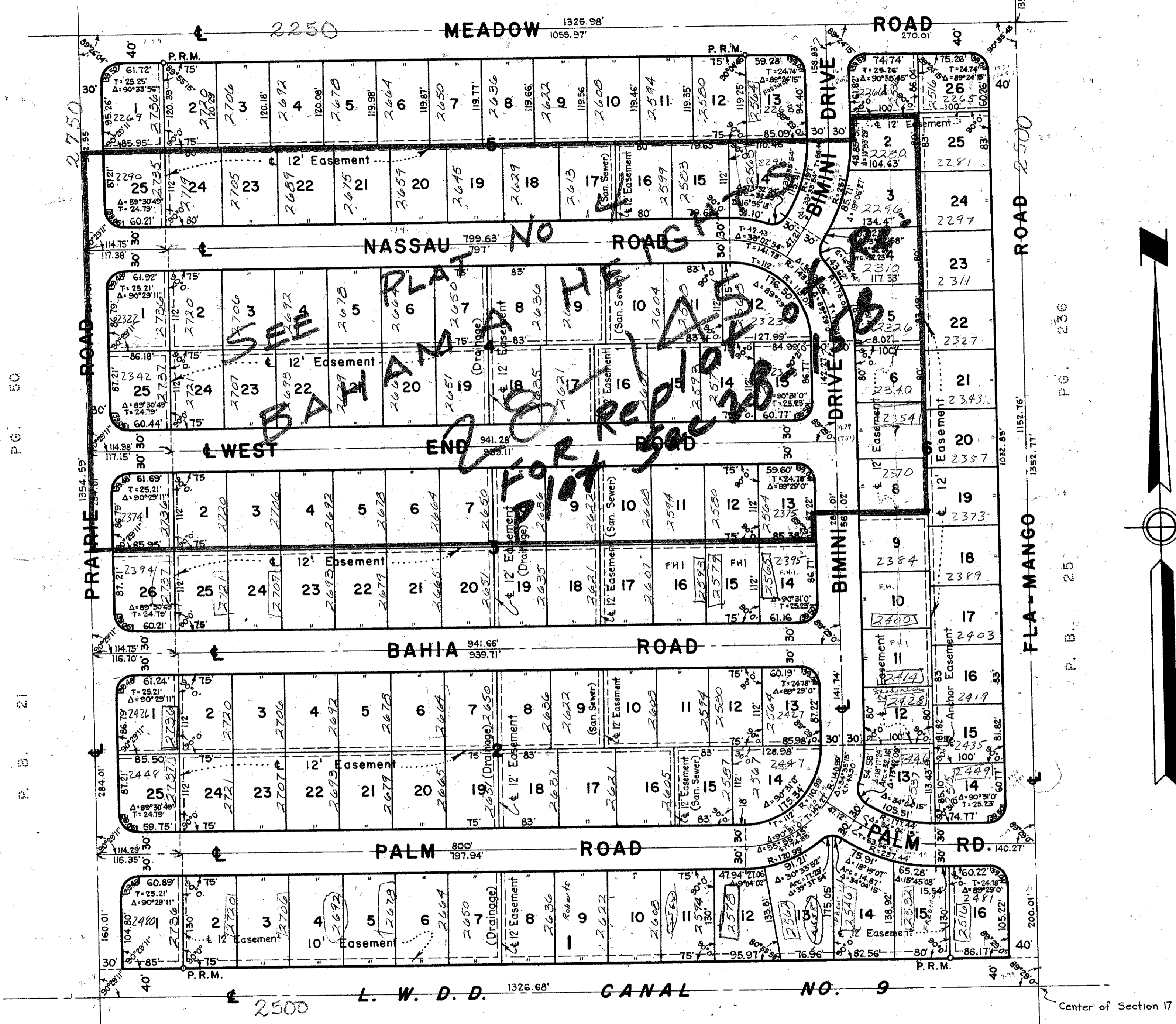


PLAT OF BAHAMA HEIGHTS IN SEC. 17, TWP. 44 S., RGE. 43 E. PALM BEACH COUNTY, FLORIDA

Including a part of Addition No. 2, Bermuda Park, recorded in Plat Book
23, Page 134, Public Records of Palm Beach County, Florida.
Being Lots 12 thru 30, inclusive and 45 thru 54, inclusive.

F. B. 23 PG. 134

1/4 Section Corner



STATE OF FLORIDA
COUNTY OF PALM BEACH ss.
This Plat was filed for record at 9:33
this 27th day of May
1959, and duly recorded in Plat Book No.
26 on page 51
J. ALEX. WHITE, Clerk Circuit Court
By: *[Signature]*

STATE OF FLORIDA
COUNTY OF PALM BEACH ss.
KNOW ALL MEN BY THESE PRESENTS, that NATEL INC., a Florida Corporation,
the owner of the tract of land lying and being in Section 17, Township 44 South, Range 43
East, Palm Beach County, Florida, shown hereon, and more particularly described as
follows, to wit:

All of the Southeast Quarter (S.E. 1/4) of the Northwest Quarter (N.W. 1/4)
of said Section 17, Township 44 South, Range 43 East, Palm Beach
County, Florida. Subject to existing right of ways of record.

The above described property includes a part of Addition No. 2,
Bermuda Park, recorded in Plat Book 23, Page 134, Public Records of Palm
Beach County, Florida, being Lots 12 thru 30, incl. and 45 thru 54, inclusive.

has caused the same to be surveyed and platted as shown hereon, and does hereby dedicate
to the perpetual use of the public, as public highways, the Roads shown hereon, and the
use of the Easements for the construction and maintenance of Public Utilities, unless other-
wise noted.

IN WITNESS WHEREOF, the said Corporation has caused these presents to be
signed by its President and attested by its Assistant Secretary, and its corporate seal to be
affixed hereto, by and with the authority of its Board of Directors, this 8th day of
April, A.D. 1959.

NATEL, INC.

Attest: *[Signature]* Assistant Secretary By: *[Signature]* President

STATE OF FLORIDA
COUNTY OF DADE ss.
I HEREBY CERTIFY that on this day personally appeared before me, an officer,
duly authorized to administer oaths and take acknowledgments, NATHANIEL B. ELKINS
and R. KUTSCHER, President and Assistant Secretary, respectively, of NATEL, INC., a
Florida Corporation, to me well known and known to me to be the individuals described in,
and who executed the foregoing dedication, and they acknowledged before me that they exe-
cuted the same as such officers of said Corporation, by and with the authority of its Board
of Directors, for the purposes therein expressed, and that their act and deed was the act
and deed of said Corporation.

WITNESS my hand and official seal of Miami Beach, County of Dade
and State of Florida, this 8th day of April, A.D. 1959.

[Signature]
Notary Public

My Commission expires: October 12, 1962

STATE OF FLORIDA
COUNTY OF PALM BEACH ss.
I HEREBY CERTIFY that the plat shown hereon is a true and correct representation
of a survey, made under my direction, of the above described property, and that said survey
is accurate to the best of my knowledge and belief, and that permanent reference monuments
(P.R.M.) have been placed as required by law.

[Signature]
Registered Land Surveyor
Florida Certificate No. 831

Subscribed and sworn to before me this 16th day of April, A.D. 1959

[Signature]
Notary Public

My Commission expires: August 7, 1961

Approved: APRIL 27th, A.D. 1959.
Board of County Commissioners

By: *[Signature]*
Chairman

[Signature]
County Engineer

NOTE

Building Setback Lines shall be as required by Palm Beach
County Zoning Regulations.

There shall be no buildings or other structures place on util-
ity easements.

There shall be no buildings or any kind of construction or trees
or shrubs placed on drainage easements.

All Easements are for Public Utilities, unless otherwise noted.

Block Corners are rounded with a 25ft. radius curve, unless
otherwise shown.

BROCKWAY, WEBER & BROCKWAY
ENGINEERS INCORPORATED
WEST PALM BEACH, FLA.

PLAT OF
BAHAMA HEIGHTS
(26-51)

SCALE: 1" = 100'
DATE: OCTOBER 1959

DRAWING NUMBER 26-51