

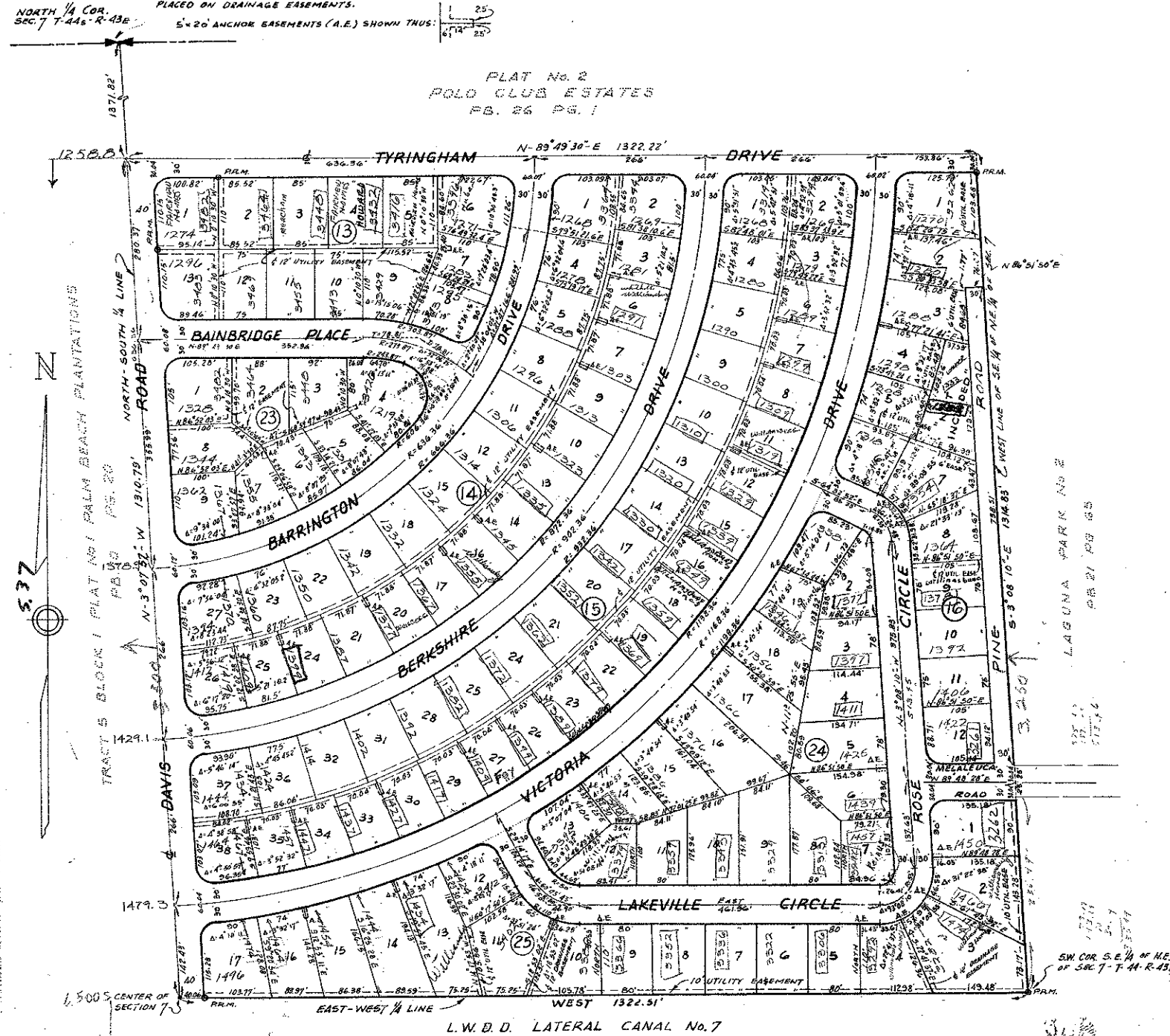
DRAWING NUMBER
26-82

PLAT No. 3 OF POLO CLUB ESTATES

IN THE NORTH 1/4 OF SECTION 7, TOWNSHIP 44S, RANGE 43E
PALM BEACH COUNTY, FLORIDA

K. C. Mock & Associates
Engineers - Surveyors
Lake Worth, Fla. Mar. 1959
Scale: 1" = 100'

NOTE:
RADIi ON CORNER LOTS ARE 25' UNLESS OTHERWISE SHOWN.
DISTANCES SHOWN ON CORNER LOTS ARE TO INTERSECTION OF LOT LINES EXTENDED.
BUILDING SETBACKS SHALL BE AS REQUIRED BY PALM BEACH COUNTY ZONING REGULATIONS.
THERE SHALL BE NO BUILDINGS OR UTILITY EASEMENTS.
THERE SHALL BE NO BUILDINGS OR ANY KIND OF CONSTRUCTION, OR TREES, OR SHRUBS
PLACED ON DRAINAGE EASEMENTS.
5'-20' ANCHOR EASEMENTS (A.E.) SHOWN THUS: [Symbol]



NORTH 1/4 COR.
SEC. 7 T. 44S. R. 43E

PLAT No. 2
POLO CLUB ESTATES
PB. 26 PG. 1

STATE OF FLORIDA
COUNTY OF PALM BEACH

KNOW ALL MEN BY THESE PRESENTS, THAT DORMANINE HOLDING CORPORATION, A FLORIDA CORPORATION, THE OWNER OF THAT TRACT OF LAND LYING AND BEING IN THE NORTH 1/4 OF SECTION 7, TWP. 44S., RGE. 43E. PALM BEACH COUNTY, FLORIDA, BEING A REPLAT OF A PORTION OF BLOCK 1 OF PLAT No. 1 PALM BEACH PLANTATIONS, AS RECORDED IN PLAT BOOK 10, PAGE 20, PUBLIC RECORDS OF PALM BEACH COUNTY, FLORIDA, SHOWN HEREON AS PLAT No. 3 OF POLO CLUB ESTATES AND MORE PARTICULARLY DESCRIBED AS FOLLOWS:

COMMENCING AT THE NORTH 1/4 CORNER OF SECTION 7, TWP. 44S., RGE. 43E., PALM BEACH COUNTY, FLORIDA, THENCE S-3°07'57"E ALONG THE NORTH-SOUTH 1/4 LINE A DISTANCE OF 1371.82 FEET TO THE POINT OF BEGINNING; THENCE N-89°49'30"E A DISTANCE OF 1322.22 FEET TO A POINT, THENCE S-3°08'10"E A DISTANCE OF 1314.83 FEET TO A POINT IN THE EAST-WEST 1/4 LINE; THENCE WEST ALONG SAID EAST-WEST 1/4 LINE A DISTANCE OF 1322.51 FEET TO A POINT IN THE NORTH-SOUTH 1/4 LINE; THENCE N-3°07'57"W ALONG SAID NORTH-SOUTH 1/4 LINE A DISTANCE OF 1310.79 FEET TO THE POINT OF BEGINNING. LESS THAT PARCEL MARKED "NOT INCLUDED".

HAS CAUSED THE SAME TO BE SURVEYED AND PLATTED AS SHOWN HEREON AND DOES HEREBY DEDICATE TO THE PERPETUAL USE OF THE PUBLIC AS PUBLIC HIGHWAYS THE ROADS, CIRCLE, PLACE AND DRIVES SHOWN HEREON, AND THE UTILITY EASEMENTS FOR THE INSTALLATION AND MAINTENANCE OF PUBLIC UTILITIES.

IN WITNESS WHEREOF THE SAID CORPORATION HAS CAUSED THESE PRESENTS TO BE SIGNED BY ITS PRESIDENT AND ATTESTED BY ITS SECRETARY, AND ITS CORPORATE SEAL TO BE HEREUNTO AFFIXED BY AND WITH THE AUTHORITY OF ITS BOARD OF DIRECTORS, THIS 23 DAY OF MARCH, 1959.

DORMANINE HOLDING CORPORATION

ATTEST: *D. J. Gmitowski*
SECRETARY

BY: *M. J. Zmistorowski*
PRESIDENT

STATE OF FLORIDA
COUNTY OF PALM BEACH

1000-303

I HEREBY CERTIFY THAT ON THIS DAY PERSONALLY APPEARED BEFORE ME AN OFFICER DULY AUTHORIZED TO ADMINISTER OATHS AND TAKE ACKNOWLEDGMENTS, M. J. ZMISTOWSKI AND O. L. ZMISTOWSKI, PRESIDENT AND SECRETARY RESPECTIVELY OF DORMANINE HOLDING CORPORATION, TO ME WELL KNOWN AND KNOWN TO ME TO BE THE INDIVIDUALS DESCRIBED IN AND WHO EXECUTED THE FOREGOING DEDICATION, DID ACKNOWLEDGE BEFORE ME THAT THEY EXECUTED THE SAME AS SUCH OFFICERS OF SAID CORPORATION, BY AND WITH THE AUTHORITY OF ITS BOARD OF DIRECTORS, FOR THE PURPOSES THEREIN EXPRESSED, AND THAT THEIR ACT AND DEED WAS THE ACT AND DEED OF SAID CORPORATION.

WITNESS MY HAND AND OFFICIAL SEAL AT *Lake Worth, Florida*, COUNTY OF PALM BEACH AND STATE OF FLORIDA THIS 23 DAY OF *March*, 1959.

MY COMMISSION EXPIRES: 2200-5, 1961

STATE OF FLORIDA
COUNTY OF PALM BEACH

I HEREBY CERTIFY THAT THE PLAT SHOWN HEREON IS A TRUE AND CORRECT REPRESENTATION OF A SURVEY MADE UNDER MY DIRECTION OF THE FOREGOING DESCRIBED, AND THAT SAID SURVEY IS ACCURATE TO THE BEST OF MY KNOWLEDGE AND BELIEF, AND THAT PERMANENT REFERENCE MONUMENTS (P.R.M.) WERE SET AS REQUIRED BY LAW.

J. C. Mock
REGISTERED LAND SURVEYOR
FLORIDA CERTIFICATE No. 1147

APPROVED *82* JUL 5 1959
BOARD OF COUNTY COMMISSIONERS
PALM BEACH COUNTY, FLORIDA

BY: *Leo Lital*
CHAIRMAN

BY: *George R. ...*
ASST. COUNTY CLERK

SUBSCRIBED AND SWORN TO BEFORE ME THIS 23 DAY OF *March*, 1959.
MY COMMISSION EXPIRES: 2200-5, 1961

82

7 July 1959
26 82
J. M. Blackburn

DRAWING NUMBER

DRAWING NUMBER

DRAWING NUMBER