

DRAWING NUMBER
26-144

DRAWING NUMBER

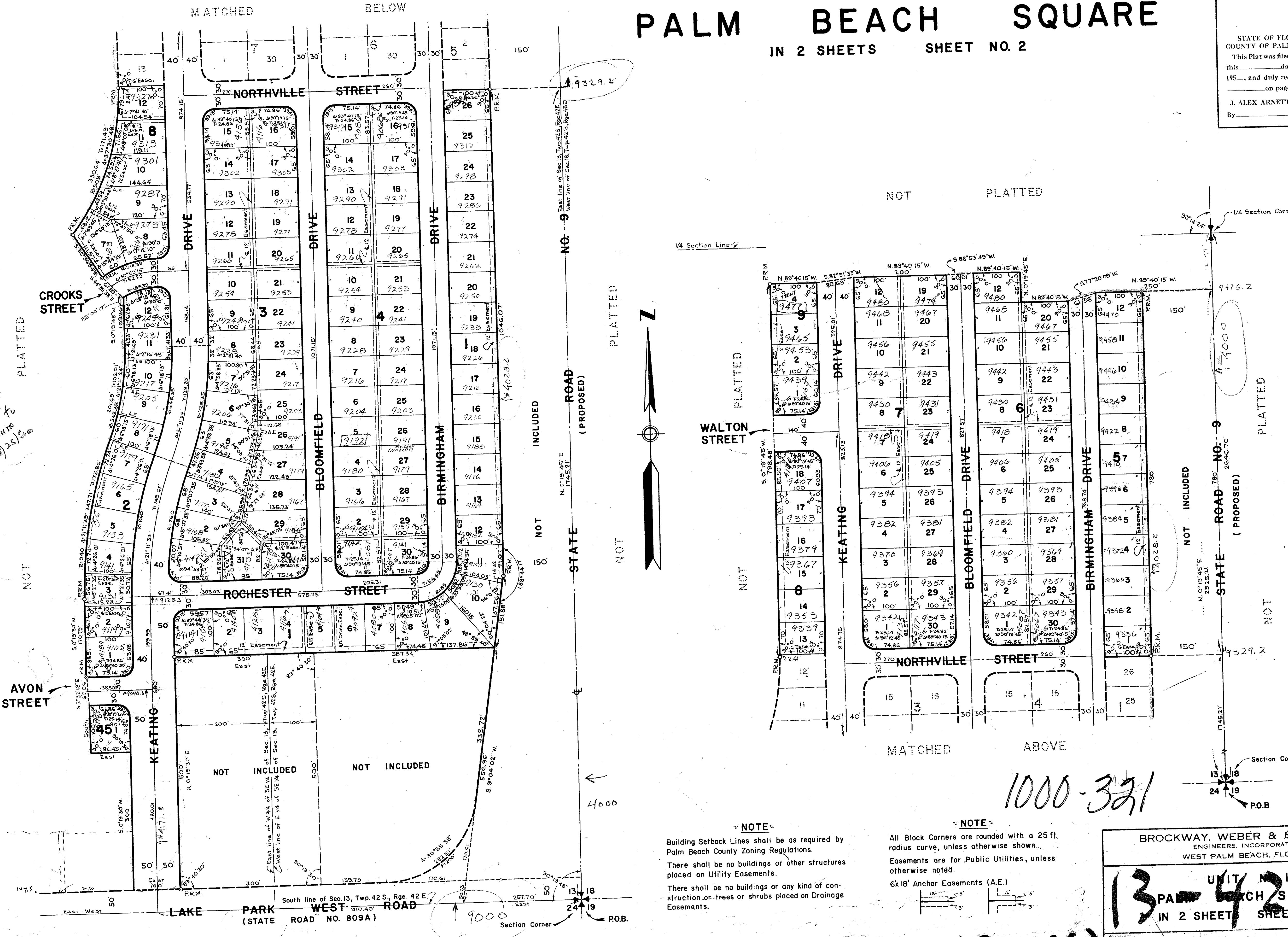
DRAWING NUMBER

DRAWING NUMBER

PALM BEACH SQUARE

UNIT NO. 1
IN 2 SHEETS SHEET NO. 2

STATE OF FLORIDA
COUNTY OF PALM BEACH
This Plat was filed for record at _____ M.
this _____ day of _____
195____, and duly recorded in Plat Book No. _____
on page _____
J. ALEX ARNETTE, Clerk Circuit Court
By _____, D. C.



#s given to corner 3/25/60

9329.2

4000

1000-321

26
144

NOTE
Building Setback Lines shall be as required by Palm Beach County Zoning Regulations.
There shall be no buildings or other structures placed on Utility Easements.
There shall be no buildings or any kind of construction or trees or shrubs placed on Drainage Easements.

NOTE
All Block Corners are rounded with a 25 ft. radius curve, unless otherwise shown.
Easements are for Public Utilities, unless otherwise noted.
6x18' Anchor Easements (A.E.)

BROCKWAY, WEBER & BROCKWAY
ENGINEERS, INCORPORATED
WEST PALM BEACH, FLORIDA

13 PALM BEACH SQUARE 42
IN 2 SHEETS SHEET NO. 2

FIELD: _____ OFFICE: J.J.F. SCALE: 1" = 100' Dwg. No. _____
DR. BY: M.G.B. DATE: JULY, 1950

(26-144)