

DRAWING NUMBER
26-180

DRAWING NUMBER

DRAWING NUMBER

DRAWING NUMBER

180

STATE OF FLORIDA
COUNTY OF PALM BEACH } ss
This Plat was filed and recorded on 12th day of August 1960 and duly approved in Plat Book No. 26, page 180
J. ALAN ARNETTE, Clerk Circuit Court
By Bertha M. Kiser

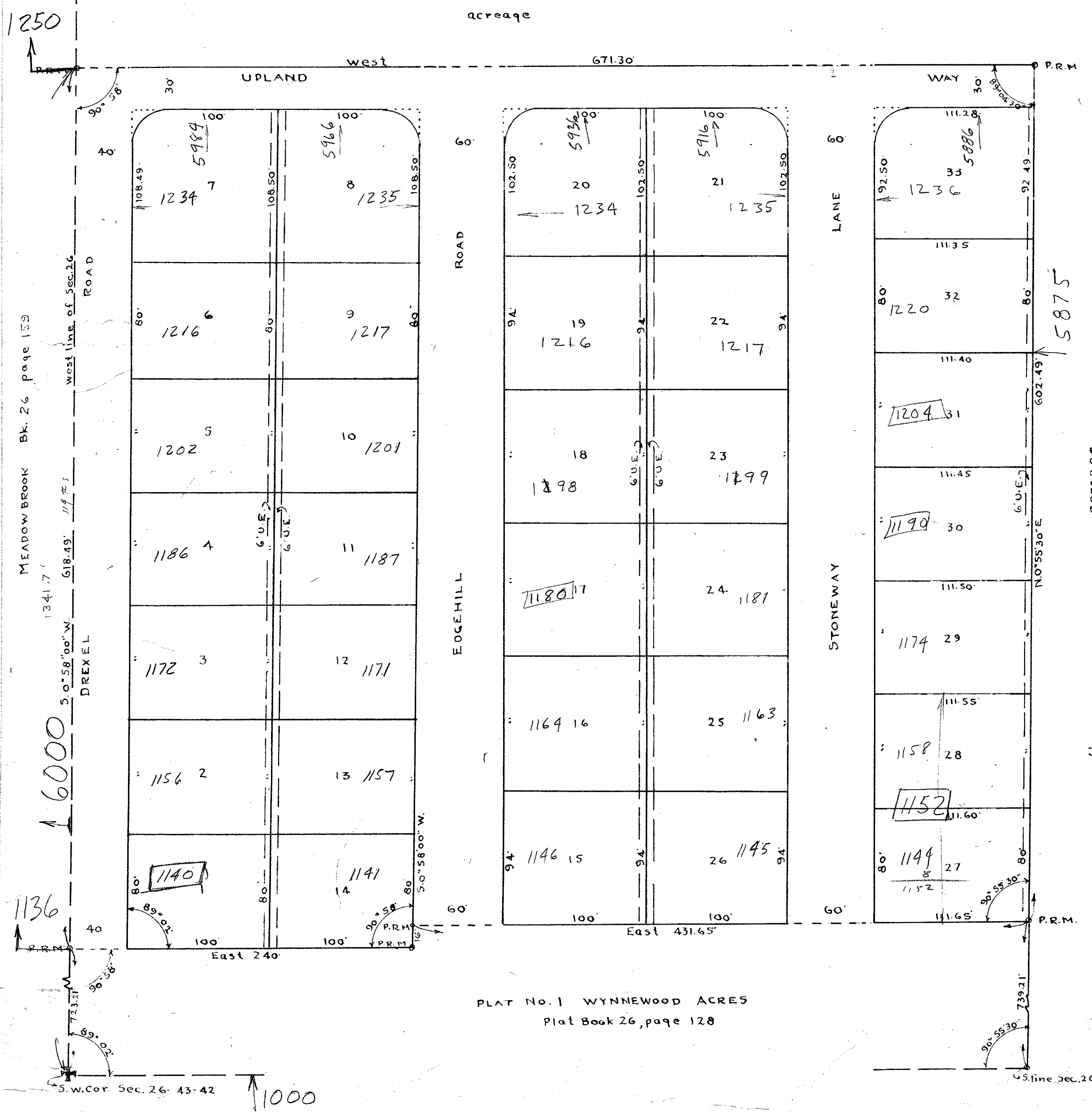
PLAT NO.2 OF

WYNNEWOOD ACRES

A SUBDIVISION OF THE W 1/2 OF THE SW 1/4 OF THE SW 1/4 OF SECTION 26, T43S, R42E, LESS PLAT NO. 1, WYNNEWOOD ACRES, PLAT BOOK 26, pg. 128.

PALM BEACH COUNTY, FLA.

There shall not be any buildings or utility easements.
There shall not be any buildings or any kind of construction or planting of trees or shrubs on drainage easements.
Easements are for public utilities unless otherwise shown.
Building setback lines shall be as required by the Palm Beach County Zoning Commission.
Intersection block corner arcs where shown have a 25' radius, and dimensions are to P.I.



PLAT NO. 1 WYNNEWOOD ACRES
Plat Book 26, page 128

STATE OF FLORIDA } ss
COUNTY OF PALM BEACH }

DEDICATION

Know all men by these presents that A. and J. DEVELOPER, Inc. of West Palm Beach, Florida is owner in fee simple of a tract of land shown on this plat as WYNNEWOOD ACRES PLAT No. 2 located in Palm Beach County, Florida and described as follows: The W 1/2 of the SW 1/4 of the SW 1/4 of Section 26, T43S, R42E, less Plat No. 1, WYNNEWOOD ACRES which is described as The S. 739.21' of the W 1/2 of the SW 1/4 of the SW 1/4 of Section 26, T43S, R42E, less the N 1/4' of the W 240' thereof, and by and with the authority of the Board of Directors has caused the same to be surveyed and platted as shown hereon and has hereby dedicated to the perpetual use of the public as public highways all Roads, Lanes and Ways as shown hereon and the owner also dedicates to the perpetual use of the public the easements shown hereon for the purposes as stated on this plat.
In witness whereof, the said Corporation has caused these presents to be signed by its President and attested by its Secretary and its corporate seal to be affixed hereto by and with the authority of its Board of Directors this 15th day of April 1960.

A. and J. Developer, Inc.
By: Joel S. Courtman
President.
Attest: Carl Smolen
Secretary.

ACKNOWLEDGEMENT

STATE OF FLORIDA } ss
COUNTY OF PALM BEACH }

I hereby certify, that on this day personally appeared before me, an officer duly authorized to administer oaths and take acknowledgements Allen E. Smolen, personally known and known to be Secretary of A. and J. DEVELOPER, Inc. and he acknowledged before me that he executed the foregoing instrument in his official capacity as the act of said company by and with the authority of the Company.
Witness my hand and official seal at West Palm Beach, Florida this 15th day of April, 1960.

Subscribed and sworn to before me
this 15th day of April, 1960.
My commission expires: Oct 6, 1962

Gene M. Swain
Notary Public.

STATE OF FLORIDA }
COUNTY OF PALM BEACH }

I hereby certify that the plat shown hereon is a true and correct representation of a survey made by me and is accurate to the best of my knowledge and belief, and that permanent reference monuments (P.R.M.) have been set as required by law.

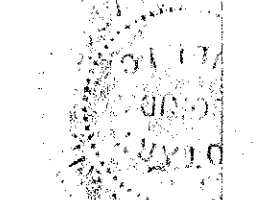
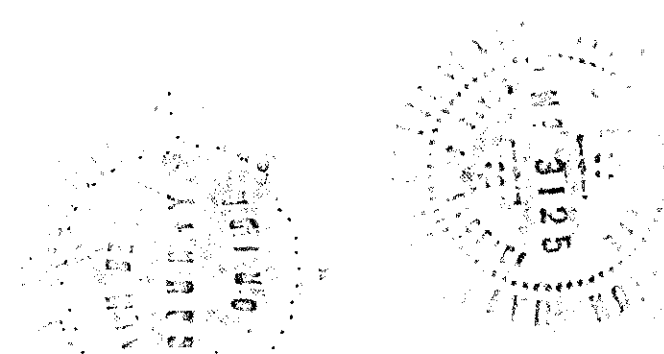
Carl Riddle
Registered Land Surveyor
Fla. Cert. No. 250

Final Date of Survey: 3-19-60.

Subscribed and sworn to before me this 15th day of April, 1960.
My commission expires: Oct 6, 1962

Gene M. Swain
Notary Public.

Subscribed and sworn to before me this 26th day of April, 1960.
My commission expires: Oct 6, 1962
Gene M. Swain
Notary Public.



Approved August 18 A.D. 1960

Board of County Commissioners
By: Stephen Meade
County Engineer.

By: Kenneth J. ...
Vice Chairman

1000-334

STATE OF SOUTH CAROLINA } ss
COUNTY OF RICHLAND }

I hereby certify, that on this day personally appeared before me, an officer duly authorized to administer oaths and take acknowledgements Joel Courtman, personally known and known to be President of A. and J. DEVELOPER, Inc. and he acknowledged before me that he executed the foregoing instrument in his official capacity as the act of said company by and with the authority of the Board of Directors.

Subscribed and sworn to before me this 26th day of April, 1960.
My commission expires: Oct 6, 1962
Gene M. Swain
Notary Public.

26-43-42