

DRAWING NUMBER
26-232

DRAWING NUMBER
26-232

DRAWING NUMBER
26-232

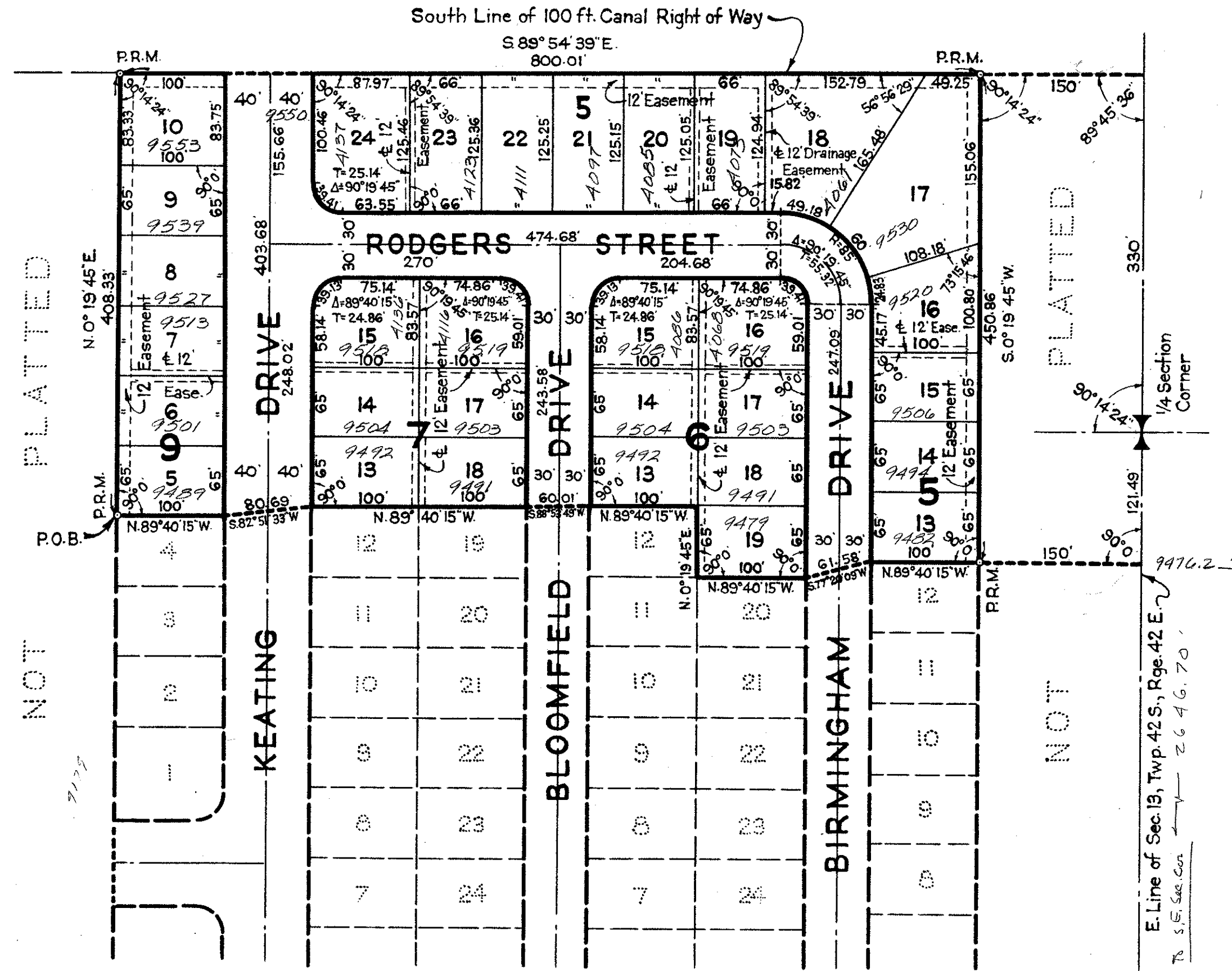
DRAWING NUMBER
26-232

PALM BEACH SQUARE

UNIT NO. 2
IN SECTION 13, TWP. 42 S., RGE. 42 E.
PALM BEACH COUNTY, FLORIDA

STATE OF FLORIDA
COUNTY OF PALM BEACH
This Plat was filed for record at 3 P.M.
this 31 day of March
1961, and duly recorded in Plat Book No.
26 on page 232
J. ALEX ARNETTE, Clerk Circuit Court
By Barbara M. Sison, D. C.

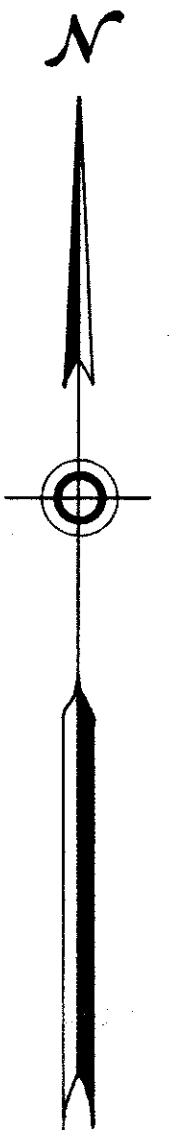
NOT PLATTED



UNIT NO. 1
PALM BEACH SQUARE
P.B. 26 ~ Pgs. 143 & 144

~NOTE~
Building Setback Lines shall be as required by Palm Beach County Zoning Regulations.
There shall be no buildings or other structures placed on Utility Easements.
There shall be no buildings or any kind of construction, or trees or shrubs placed on Drainage Easements.

~NOTE~
All Block Corners are rounded with a 25 ft. radius curve unless otherwise shown.
Easements are for Public Utilities unless otherwise noted.



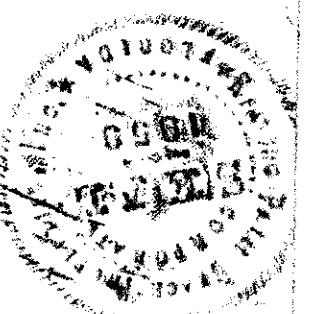
STATE OF FLORIDA
COUNTY OF PALM BEACH ss
KNOW ALL MEN BY THESE PRESENTS, that KEATING PALM BEACH PROPERTIES, INC., a Florida Corporation, the owner of the tract of land lying and being in Section 13, Township 42 South, Range 42 East, Palm Beach County, Florida, shown hereon as UNIT NO. 2, PALM BEACH SQUARE, and more particularly described as follows, to wit:

Beginning at a point in a line parallel to and 950 feet westerly from (measured at right angles to) the East line of said Section 13, said point being the northwesterly corner of Lot 4, Block 9, Unit No. 1, Palm Beach Square, recorded in Plat Book 26, Pages 143 and 144, Public Records of Palm Beach County, Florida; thence N.0°19'45"E. along said parallel line, being the northerly extension of the westerly line of said Lot 4, a distance of 408.33 feet, more or less, to a point in the South line of the North 100 feet of the South 430 feet of the Northeast Quarter (NE 1/4) of said Section 13 (for convenience the South line of said Section 13 is assumed to bear East-West and all other bearing shown hereon are relative thereto); thence S.89°54'39"E. along said South line a distance of 800.01 feet to a point in a line parallel to and 150 feet westerly from (measured at right angles to) the East line of said Section 13; thence S.0°19'45"W. along said parallel line a distance of 450.86 feet, more or less, to the northeasterly corner of Lot 12, Block 5 of said Unit No. 1; thence westerly by the following courses along the northerly line of said Unit No. 1: N.89°40'15"W., 100 feet; S.77°20'09"W., 61.58 feet; N.89°40'15"W., 100 feet; N.0°19'45"E., 65 feet; N.89°40'15"W., 100 feet; S.88°53'49"W., 60.01 feet; N.89°40'15"W., 200 feet; S.82°51'33"W., 80.69 feet to the northeasterly corner of said Lot 4, Block 9 of said Unit No. 1; thence N.89°40'15"W. along the northerly line of said Lot 4, a distance of 100 feet to the Point of Beginning.

has caused the same to be surveyed and platted as shown hereon, and does hereby dedicate to the perpetual use of the public, as public highways, the Streets shown hereon, and the use of the Easements for the construction and maintenance of Public Utilities
IN WITNESS WHEREOF, the said Corporation has caused these presents to be signed by its President and attested by its Secretary and its corporate seal to be affixed hereto, by and with the authority of its Board of Directors, this 25th day of NOVEMBER, A. D. 1960.

KEATING PALM BEACH PROPERTIES, INC.

Attest: John K. Brennan Secretary
By: Howard T. Keating President



STATE OF FLORIDA
COUNTY OF PALM BEACH ss
I HEREBY CERTIFY that on this day personally appeared before me, an officer duly authorized to administer oaths and take acknowledgments, HOWARD T. KEATING, JR. and JOHN K. BRENNAN, President and Secretary, respectively, of KEATING PALM BEACH PROPERTIES, INC., a Florida Corporation, to me well known and known to me to be the individuals described in, and who executed the foregoing dedication, and they acknowledged before me that they executed the same as such officers of said Corporation and with the authority of its Board of Directors for the purposes therein expressed, and that their act and deed was the act and deed of said Corporation.
WITNESS my hand and official seal at Boca Raton, County of Palm Beach and State of Florida, this 25th day of November, A. D. 1960.

1000-342

Thomas C. Wood
Notary Public

My Commission expires: Feb 12, 1962



STATE OF FLORIDA
COUNTY OF PALM BEACH ss
I HEREBY CERTIFY that the plat shown hereon is a true and correct representation of a survey, made under my direction, of the foregoing described property, and that said survey is accurate to the best of my knowledge and belief, and that permanent reference monuments (P.R.M.) have been placed as required by law.

Ben E. Whittington
Registered Land Surveyor
Florida Certificate No. 1125

Subscribed and sworn to before me this 6th day of December, A. D. 1960

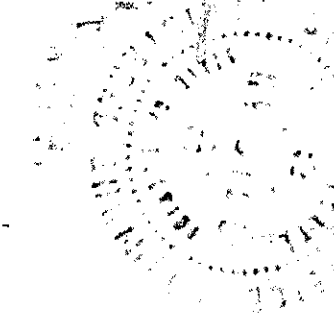
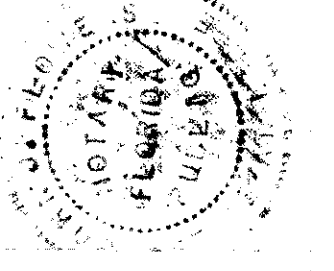
John J. Flouren
Notary Public

My Commission expires: August 7, 1961

Approved: March 31 A. D. 1961
Board of County Commissioners

By: Late Lytal
Vice Chairman

By: Stephen Mesallo
County Engineer



BROCKWAY, WEBER & BROCKWAY
ENGINEERS, INCORPORATED
WEST PALM BEACH, FLORIDA

UNIT NO. 2
PALM BEACH SQUARE

FIELD: 13/42/42
OFFICE: J.J.F.
SCALE: 1" = 10'
DRAWN BY: J.J.F.