

DRAWING NUMBER
27-29

DRAWING NUMBER

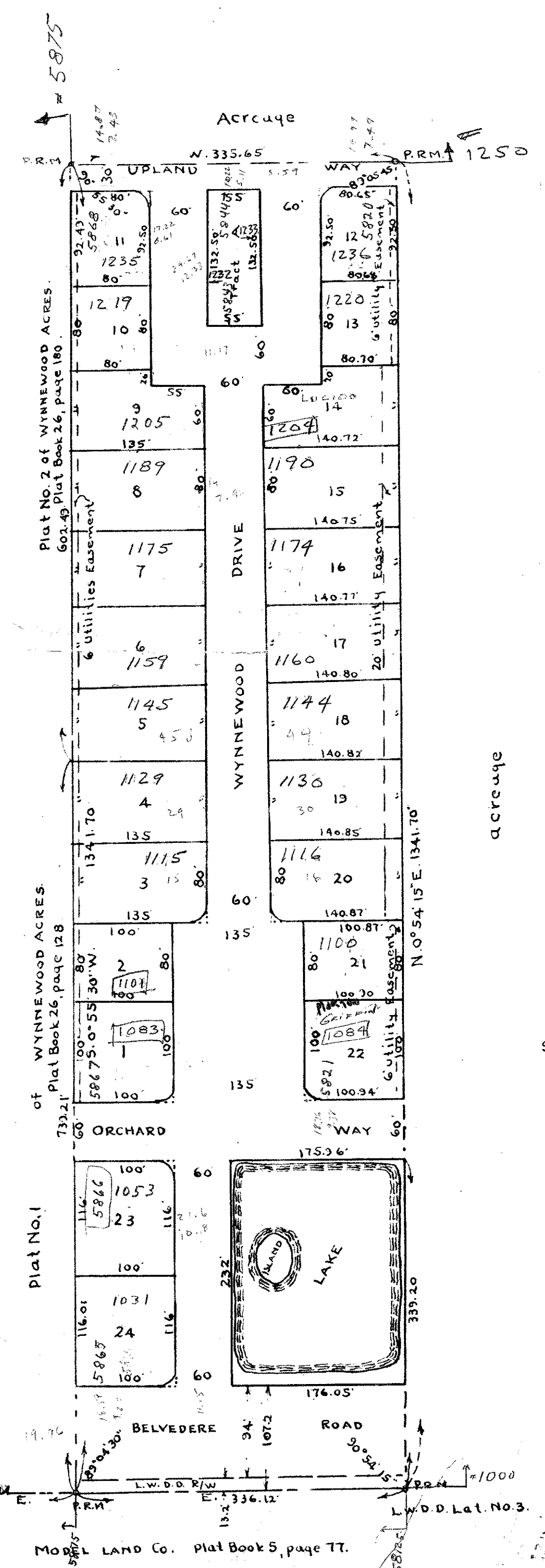
DRAWING NUMBER

DRAWING NUMBER

PLAT NO. 3 OF
WYNNEWOOD ACRES
A SUBDIVISION OF THE W 1/2 OF THE E 1/2 OF
THE SW 1/4 OF THE SW 1/4 OF SECTION 26, T43S,
R42E. PALM BEACH COUNTY, FLORIDA.

29

4:10 P
15th August
61
27
J. M. Blackman



There shall not be any buildings on utility easements.
There shall not be any buildings or any kind of construction or planting of trees or shrubs on drainage easements.
Easements are for public utilities unless shown.
Building set-back lines shall be as required by the Palm Beach County Zoning Commission.
Intersection block corner arcs where shown have a 25' radius, and dimensions are to P.I.
Area shown as "LAKE" is to be used as drainage facility and shall not be filled in.

NOTE: Tract "A" is a utility site.
A 2' width safety berm will always be provided on perimeter of LAKE, as shown on the plat.

DEDICATION

STATE OF FLORIDA } SS.
COUNTY OF PALM BEACH }
Know all men by these presents that A. & J. DEVELOPER, Inc. of West Palm Beach, Florida is owner in fee simple of a tract of land shown on this plat as WYNNEWOOD ACRES PLAT NO. 3 located in Palm Beach County, Florida and described as follows:
The W 1/2 of the E 1/2 of the SW 1/4 of Section 26, T43S, R42E and by and with the authority of the Board of Directors has caused the same to be surveyed and platted as shown hereon and has hereby dedicated to the perpetual use of the public high ways all Ways and Drives as shown hereon, also BELVEDERE ROAD and the other also dedicates to the perpetual use of the public the easements shown hereon for the purposes as stated on this plat.

In witness whereof, the said corporation has caused these presents to be signed by its President and attested by its Secretary and its corporate seal affixed hereto by and with the authority of its Board of Directors this 5th day of January, 1961.

A. and J. Developer, Inc.
By: Joel S. Courtman
President
Attest: Allen E. Smolen
Secretary

ACKNOWLEDGEMENT

STATE OF FLORIDA } SS.
COUNTY OF PALM BEACH }
I hereby certify, that on this day personally appeared before me, an officer duly authorized to administer oaths and take acknowledgements Allen E. Smolen, personally known and known to be Secretary of A & J Developer, Inc. and he acknowledged before me that he executed the foregoing instrument in his official capacity as the act of said company by and with the authority of the company.
Witness my hand and official seal at West Palm Beach, Fla. this 5th day of January, 1961.
Subscribed and sworn to before me this 5th day of January, 1961.
My commission expires: April 10, 1964.

Edna J. Jurney
Notary Public

ACKNOWLEDGEMENT

STATE OF FLORIDA } SS.
COUNTY OF PALM BEACH }
I hereby certify that the plat shown hereon is a true and correct representation of a survey made by me and is accurate to the best of my knowledge and belief, and that permanent reference monuments (P.R.M.) have been set as required by law.
Witness my hand and official seal at West Palm Beach, Fla. this 5th day of January, 1961.
Subscribed and sworn to before me this 5th day of January, 1961.
My commission expires: April 10, 1964.

Harold L. ...
Registered Land Surveyor
Fla. Cert. No. 250.

Approved: August 15 A.D. 1961.
Board of County Commissioners
By: Richard ...
County Engineer
By: Paul ...
Chairman

Final date of survey 12-30-60.
Subscribed and sworn to before me this 5th day of January, 1961.
My commission expires: April 10, 1964.

27-29
Notary Public
My commission expires: April 10, 1964.

1000-27026/43/42

WYNNEWOOD ACRES - PLAT #3