

DRAWING NUMBER  
**27-32**

DRAWING NUMBER

DRAWING NUMBER

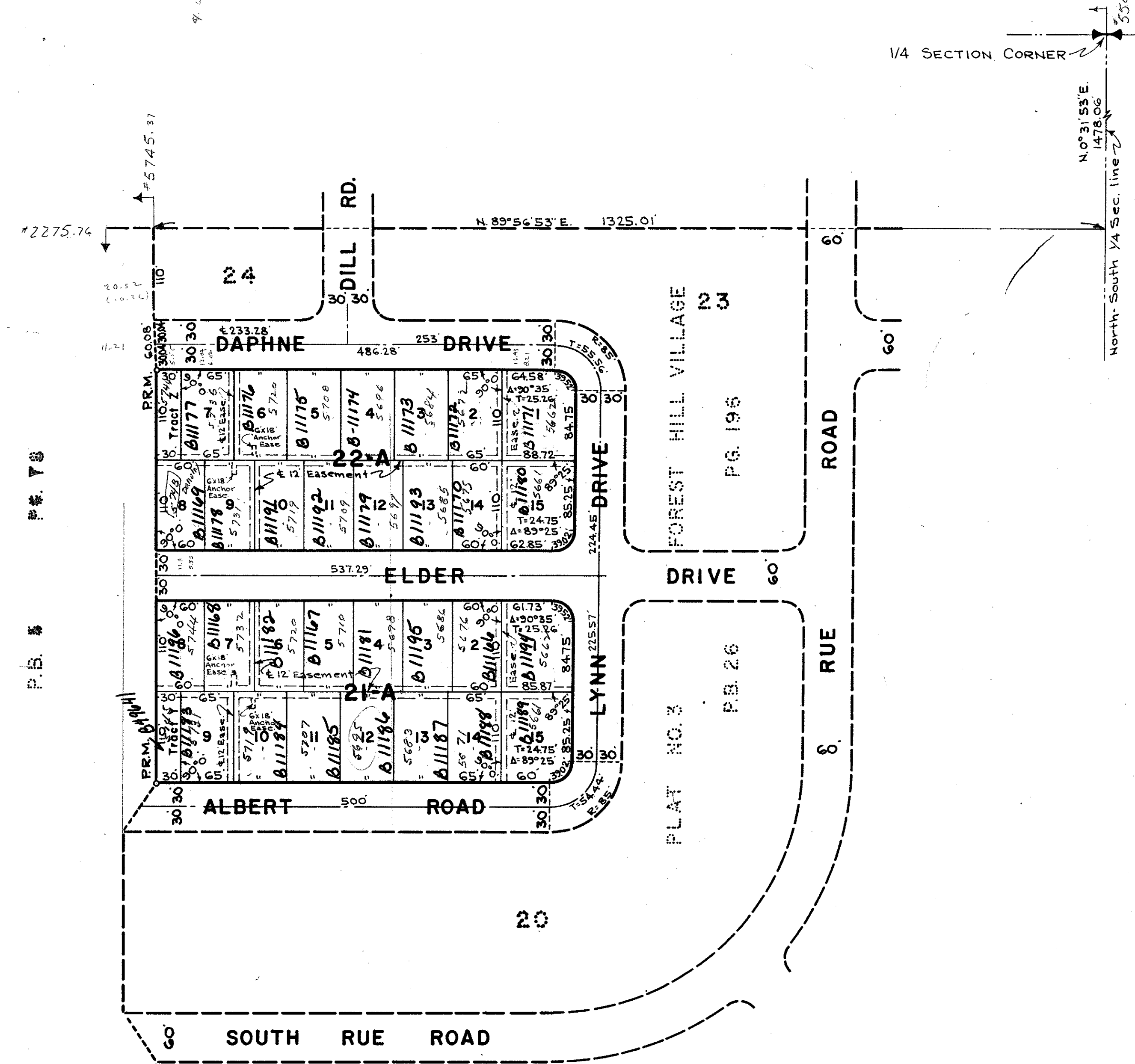
DRAWING NUMBER

# REPLAT OF BLOCKS 21 & 22, PLAT NO. 3 FOREST HILL VILLAGE

IN SECTION 14, TWP. 44 S., RGE. 42 E.  
PALM BEACH COUNTY, FLORIDA  
Being a Replat of Blocks 21 and 22, Plat No. 3, Forest Hill Village, recorded  
in Plat Book 26, Page 196, Public Records of Palm Beach County, Florida

32

STATE OF FLORIDA  
COUNTY OF PALM BEACH  
This Plat was filed for record at 4:08  
this 14th day of September  
1961, and duly recorded in Plat Book  
27 on page 32.  
J. ALEX ARNETTE, Clerk Circuit Court  
By: *J. M. Blackburn*



**NOTE:**

Building Setback Lines shall be as required  
by Palm Beach County Zoning Regulations.  
There shall be no buildings or other struc-  
tures placed on Utility Easements.  
There shall be no buildings or any kind of  
construction or trees or shrubs placed on  
Drainage Easements.

**NOTE:**

All Block Corners are rounded with a 25ft.  
radius curve, unless otherwise shown.  
Easements are for Utilities, unless otherwise  
noted.  
Tracts Y and Z not to be used as residential  
sites unless combined with adjoining property.

STATE OF FLORIDA  
COUNTY OF PALM BEACH

KNOW ALL MEN BY THESE PRESENTS, that FOREST HILL VILLAGE, INC., a  
Florida Corporation, the owners of the tract of land lying and being in Section 14, Township  
44 South, Range 42 East, Palm Beach County, Florida, shown hereon as REPLAT OF BLOCKS  
21 & 22, PLAT NO. 3, FOREST HILL VILLAGE, and more particularly described as follows:

All of Blocks 21 and 22, Plat No. 3, Forest Hill Village, Palm Beach County, Florida,  
according to the plat thereof on file in the office of the Clerk of the Circuit Court  
in and for Palm Beach County, Florida, recorded in Plat Book 26, Page 196.

has caused the same to be surveyed and platted as shown hereon, and does hereby dedi-  
cate to the perpetual use of the public, the use of the Easements for the construction  
and maintenance of Public Utilities, and /or Drainage Purposes.

IN WITNESS WHEREOF, the said Corporation has caused these presents to be  
signed by its President and attested by its Secretary and its corporate seal to be af-  
fixed hereto, by and with the authority of its Board of Directors, this 14th day of  
August, A.D. 1961.

FOREST HILL VILLAGE, INC.

Attest: *Stephen Abramson* Secretary By: *John J. Flowers* President

STATE OF FLORIDA  
COUNTY OF PALM BEACH

I HEREBY CERTIFY, that on this day personally appeared before me, an officer  
duly authorized to administer oaths and take acknowledgments, E.J. ROSSODIVITA and  
STEPHEN ABRAMSON, President and Secretary, respectively, of FOREST HILL VILLAGE,  
INC., a Florida Corporation, to me well known and known to me to be the individuals de-  
scribed in, and who executed the foregoing dedication, and they acknowledged before me  
that they executed the same as such officers of said Corporation, by and with the author-  
ity of its Board of Directors for the purposes therein expressed, and that their act and  
deed was the act and deed of said Corporation.

WITNESS my hand and official seal at West Palm Beach, County of Palm  
Beach and State of Florida, this 14th day of August, A.D. 1961.

*John J. Flowers*  
Notary Public

My Commission expires: August 7, 1965

STATE OF FLORIDA  
COUNTY OF PALM BEACH

I HEREBY CERTIFY, that the plat shown hereon is a true and correct  
representation of a survey, made under my direction, of the hereon described prop-  
erty, and that said survey is accurate to the best of my knowledge and belief,  
and that permanent reference monuments (P.R.M.) have been place as required by law.

*George R. Brockway*  
Registered Land Surveyor  
Florida Certificate No. 831

Subscribed and sworn to before me this 21st day of August, A.D. 1961.

*John J. Flowers*  
Notary Public

My Commission expires: August 7, 1965

1000-274

Approved: 1 Sept 1961, A.D. 1961  
Board of County Commissioners

By: *Ben Brandy*  
Chairman

By: *[Signature]*  
Asst. County Engineer

BROCKWAY, WEBER & BROCKWAY  
ENGINEERS, INCORPORATED  
WEST PALM BEACH, FLORIDA  
14/44/62  
REPLAT OF BLKS 21 & 22, PLAT NO. 3  
FOREST HILL VILLAGE  
(27-32)  
FIELD: J.F. SCALE: 1"=100' DRG. No. M.G.B.