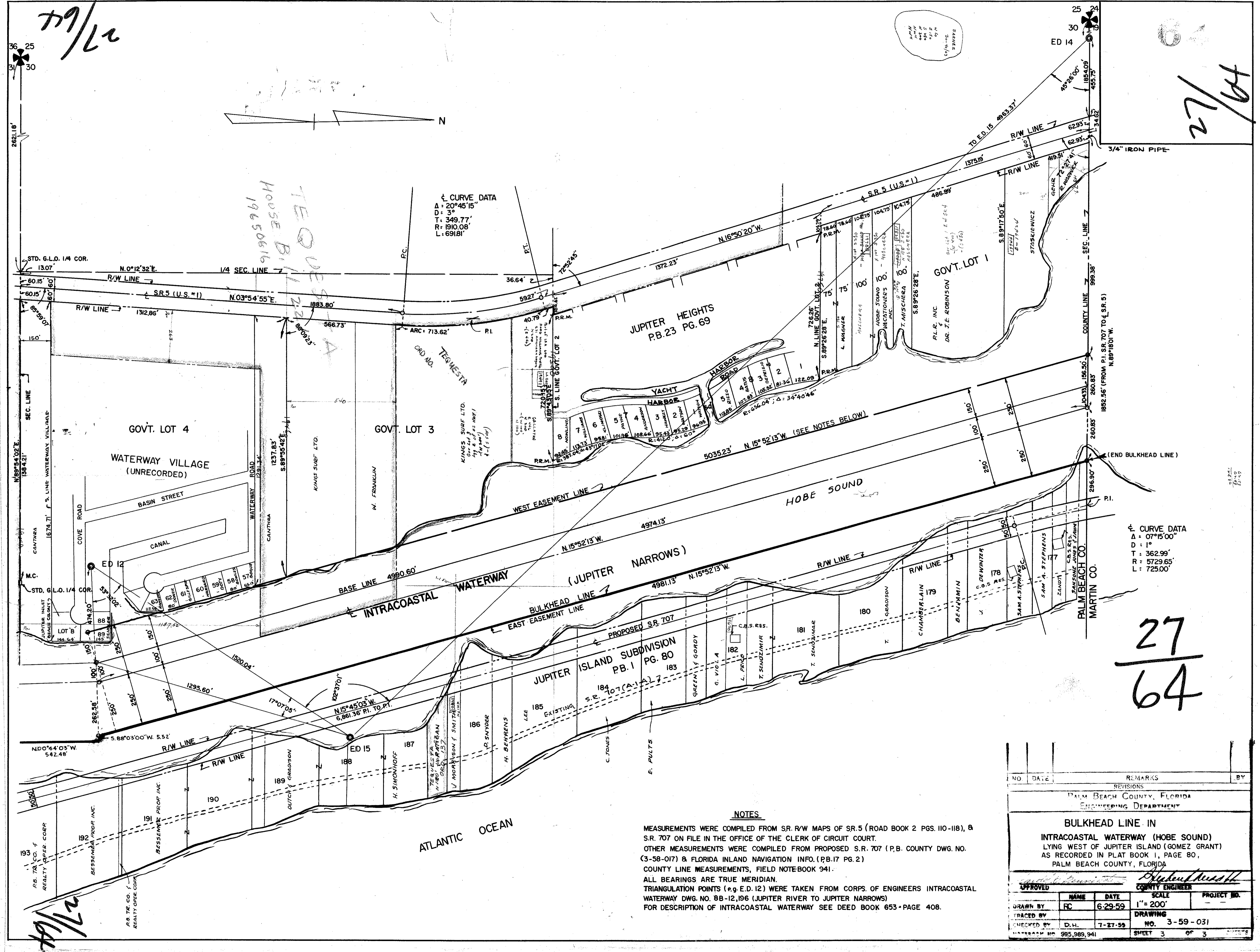


DRAWING NUMBER
27-64

DRAWING NUMBER

DRAWING NUMBER

DRAWING NUMBER



79/22

27/64

27
64

CURVE DATA
 Δ: 20°45'15"
 D: 3°
 T: 349.77'
 R: 1910.08'
 L: 691.81'

CURVE DATA
 Δ: 07°15'00"
 D: 1°
 T: 362.99'
 R: 5729.65'
 L: 725.00'

NOTES

MEASUREMENTS WERE COMPILED FROM S.R. R/W MAPS OF SR.5 (ROAD BOOK 2 PGS. 110-118), & SR. 707 ON FILE IN THE OFFICE OF THE CLERK OF CIRCUIT COURT.
 OTHER MEASUREMENTS WERE COMPILED FROM PROPOSED S.R. 707 (P.B. COUNTY DWG. NO. (3-58-017) & FLORIDA INLAND NAVIGATION INFO. (P.B.17 PG. 2) COUNTY LINE MEASUREMENTS, FIELD NOTEBOOK 941.
 ALL BEARINGS ARE TRUE MERIDIAN.
 TRIANGULATION POINTS (e.g. E.D.12) WERE TAKEN FROM CORPS. OF ENGINEERS INTRACOASTAL WATERWAY DWG. NO. 8B-12,196 (JUPITER RIVER TO JUPITER NARROWS) FOR DESCRIPTION OF INTRACOASTAL WATERWAY SEE DEED BOOK 653-PAGE 408.

NO.	DATE	REVISIONS	REMARKS	BY
PALM BEACH COUNTY, FLORIDA ENGINEERING DEPARTMENT				
BULKHEAD LINE IN INTRACOASTAL WATERWAY (HOBE SOUND) LYING WEST OF JUPITER ISLAND (GOMEZ GRANT) AS RECORDED IN PLAT BOOK 1, PAGE 80, PALM BEACH COUNTY, FLORIDA				
APPROVED		COUNTY ENGINEER		
DRAWN BY	FC	DATE	6-29-59	SCALE
TRACED BY				1" = 200'
CHECKED BY	D.H.	DATE	7-27-59	DRAWING NO.
				3-59-031
SHEET 3 OF 3				PROJECT NO.