

DRAWING NUMBER
27-65
 PLAN HOLD CORPORATION • IRVINE, CALIFORNIA
 REGISTERED BY NUMBER 02048
 PERIOD OF YEAR OF THIS YEAR

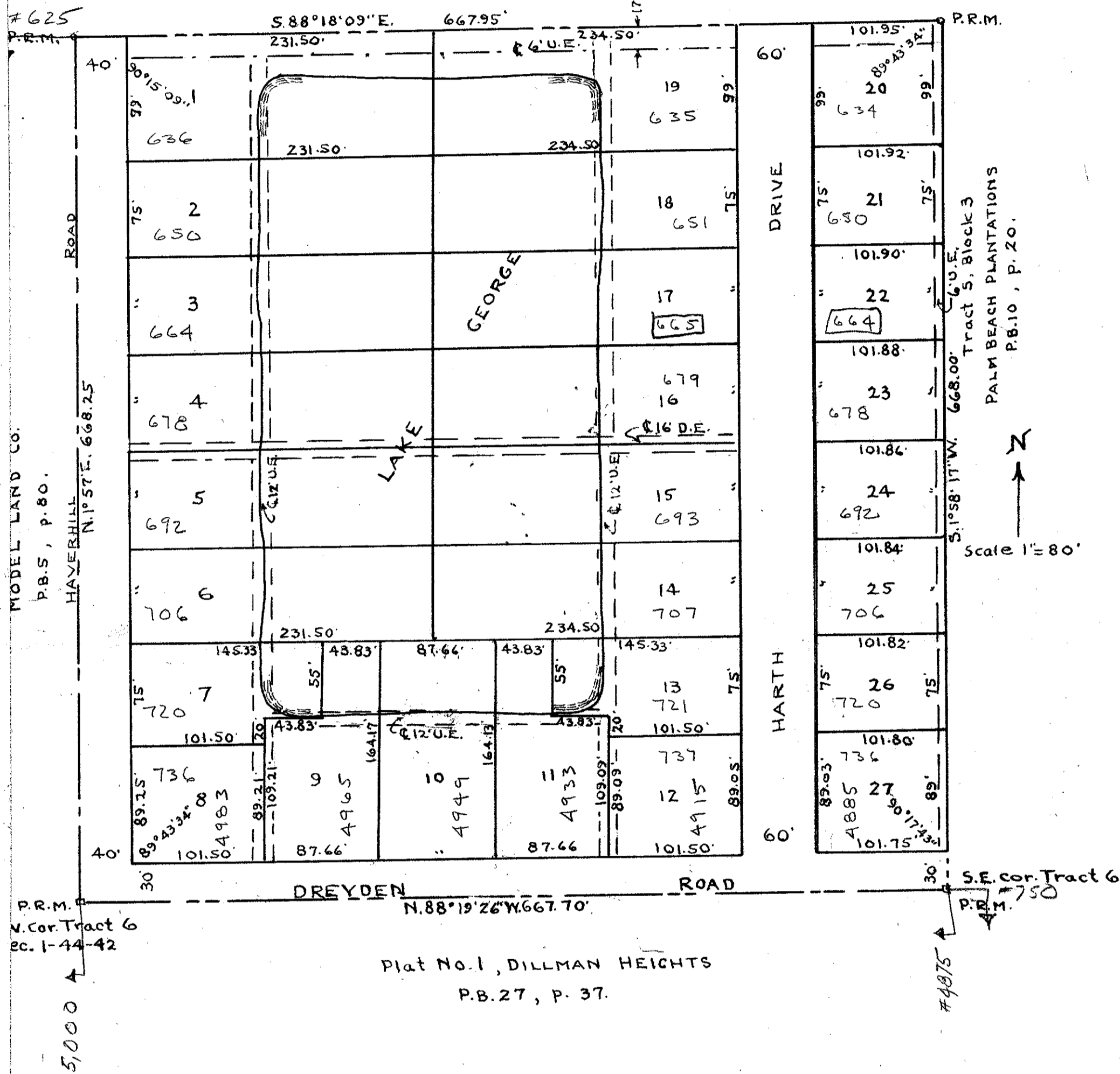
PLAT TWO
 DILLMAN HEIGHTS

A SUBDIVISION OF THE S. 1/2 of Tract 6, Block 3,
 PALM BEACH PLANTATIONS, (MODEL LAND CO.)
 Plat No. 1, Sheet No. 1, in SEC. 1-44-42,
 as recorded in Plat Book 10, on page 20.

65

STATE OF FLORIDA
 COUNTY OF PALM BEACH } ss.
 This plat was filed for record at 3 P.M.
 this 1st day of Nov.
 1961 and duly recorded in Plat Book No.
 27, page 65
 J. ALLEN ARNETTE, Clerk Circuit Court
 by *B. J. ...* D. C.

Tract 6, Block 3, PALM BEACH PLANTATIONS
 P.B. 10, p. 20.



There shall not be any buildings on utility easements.
 There shall not be any buildings or any kind of construction or planting of trees or shrubs on drainage easements.
 Easements are for public utilities unless shown.
 Building set-back lines shall be as required by the Palm Beach County Zoning Commission.
 The area shown as "LAKE GEORGE" is to be used as a drainage facility and shall not be filled in.

DEDICATION

STATE OF FLORIDA } ss.
 COUNTY OF PALM BEACH } ss.
 Know all men by these presents that Palm Beach Building Specialties, Inc., West Palm Beach, Fla., is owner in fee simple of a tract of land shown on this plat as PLAT TWO, DILLMAN HEIGHTS, located in Palm Beach County, Florida and described as follows:
 The S. 1/2 of Tract 6, Block 3, PALM BEACH PLANTATIONS (MODEL LAND CO.) Plat No. 1, Plat Book 10, page 20, and by and with the authority of the Board of Directors has caused the same to be surveyed and platted as shown hereon and has hereby dedicated to the perpetual use of the public highways, all Roads and Drives as shown hereon, and the owner also dedicates to the perpetual use of the public the easements shown hereon for the purposes as stated on this plat.

In witness whereof the said Corporation has caused these presents to be signed by its President and attested by its Secretary and its corporate seal affixed hereto by and with the authority of its Board of Directors this 1st day of September 1961.

Palm Beach Building Specialties, Inc.
 By: *Roy E. George*
 President
 Attest: *Robert K. Boyd*
 Secretary

ACKNOWLEDGEMENT

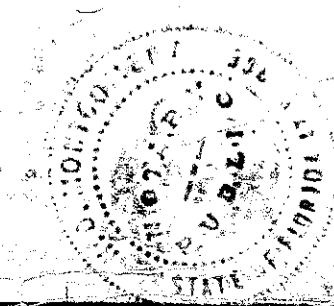
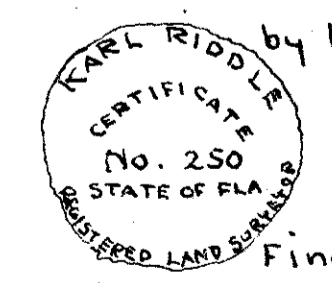
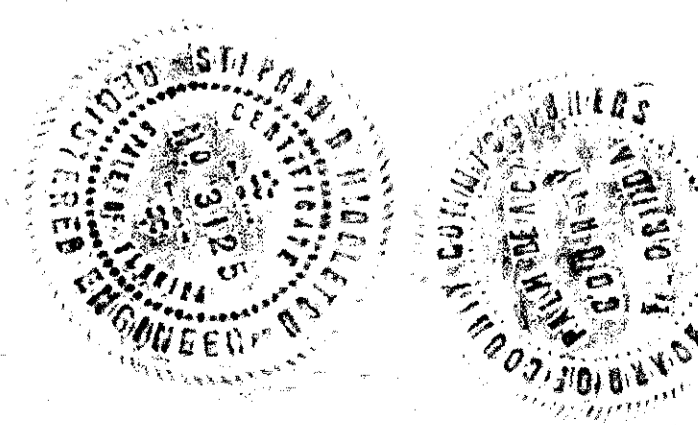
STATE OF FLORIDA } ss.
 COUNTY OF PALM BEACH } ss.
 I hereby certify that on this day personally appeared before me, an officer duly authorized to administer oaths and take acknowledgements, Roy E. George and Robert K. Boyd, President and Secretary, respectively, of Palm Beach Building Specialties, Inc. a Florida Corporation, to me well known and known to me to be the individuals described in, and who executed the foregoing dedication, and they acknowledged before me that they executed the same as such officers of said Corporation by and with the authority of the Board of Directors of said Corporation for the purposes thereof expressed, and that their act and deed was the act and deed of said Corporation.
 Witness my hand and official seal at West Palm Beach, County of Palm Beach, and State of Florida this 1st day of September A.D. 1961.
 My commission expires: Oct. 22, 1963

Laura B. Jenkins
 Notary Public

STATE OF FLORIDA } ss.
 COUNTY OF PALM BEACH } ss.
 I hereby certify that the plat shown hereon is a true and correct representation of a survey made by me and is accurate to the best of my knowledge and belief, and that permanent reference monuments (P.R.M.) have been set as required by law.
Karl Riddle
 Registered Land Surveyor
 Fla. Cert. No. 250
 Final date of survey 8-28-61.

Subscribed and sworn to before me this 31st day of August 1961.
 My commission expires: Jan. 16, 1961
John ...
 Notary Public

Approved: NOVEMBER 13 A.D. 1961.
 Board of County Commissioners.
 By: *Arthur ...*
 County Engineer
 By: *Lou ...*
 Vice Chairman



1000-283
 27
 65
 1/44/42