

DRAWING NUMBER
27-79

DRAWING NUMBER

DRAWING NUMBER

DRAWING NUMBER

6L/2a

79
27/79

PLAT OF ROYAL PINES

IN NW 1/4 OF SECTION 1, TWP. 44 S., RGE. 42 E.

PALM BEACH COUNTY, FLORIDA

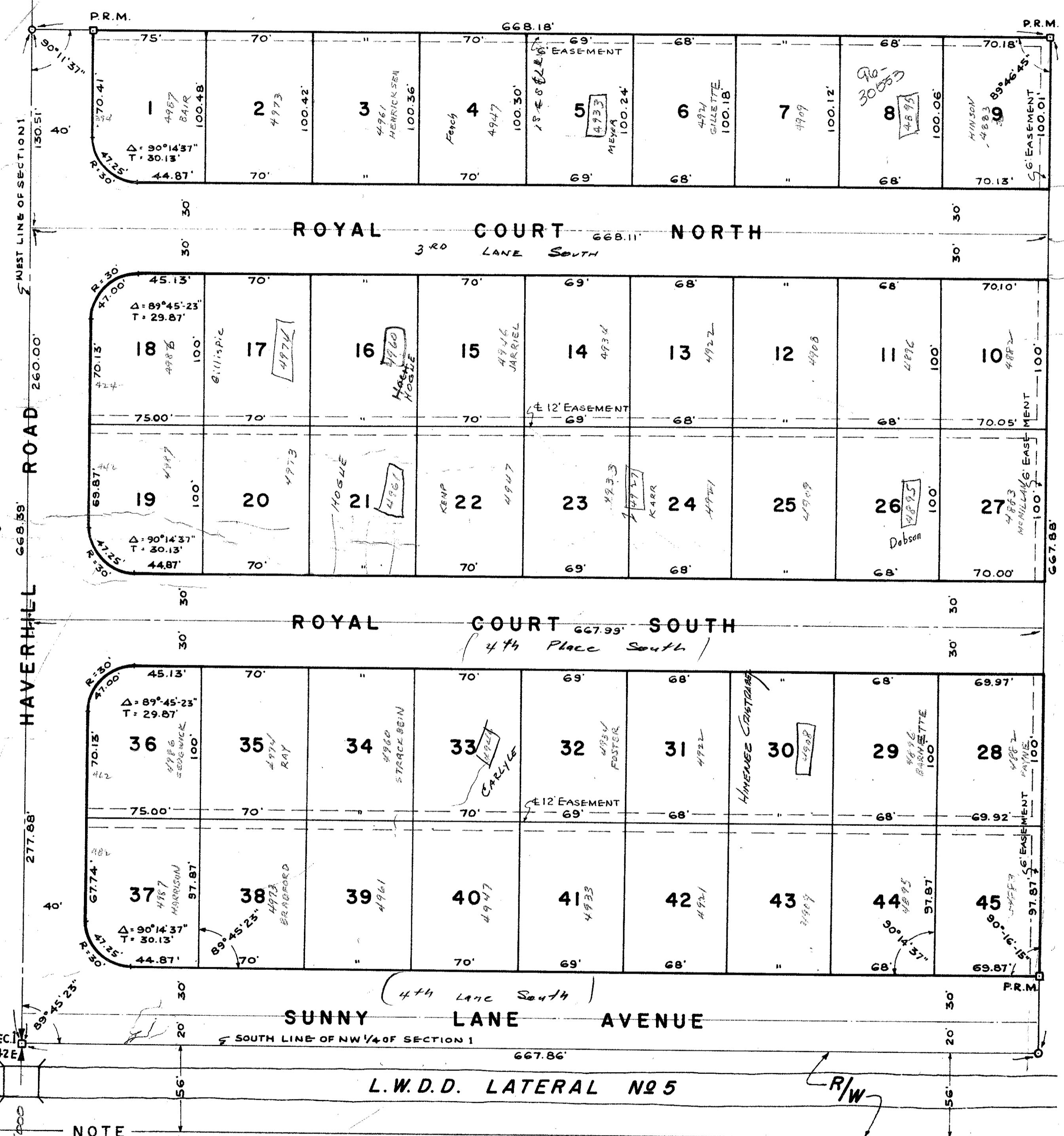
BEING A REPLAT OF PART OF TRACT 7, BLOCK 2, PALM BEACH PLANTATIONS AS RECORDED IN PLAT BOOK 10, PAGE 20, PUBLIC RECORDS OF PALM BEACH COUNTY, FLORIDA.

NOT PLATTED

32

635.10

SEVEN MONTHS
CONSTRUCTION
This Plat was filed for record on the
14th day of Feb. 1966
at 2:56 P.M.
1966 and is a true and correct copy of
the original as shown to me by
27 of 79
J. ADKINS
By *Bertie M. Wilson*



STATE OF FLORIDA
COUNTY OF PALM BEACH SS
KNOW ALL MEN BY THESE PRESENTS, that ROYAL INC. OF PALM BEACH, a Florida Corporation, the owner of the tract of land lying and being in Section 1, Township 44 South, Range 42 East, Palm Beach County, Florida, shown hereon as ROYAL PINES and more particularly described as follows, to wit:

Being the Southwest Quarter (SW 1/4) of the Southwest Quarter (SW 1/4) of the North-west (NW 1/4) of Section 1, Township 44 South, Range 42 East, Palm Beach County, Florida, also known as the South one half (S 1/2) of Tract 7, Block 2, Palm Beach Plantations as recorded in Plat Book 10, Page 20.
has caused the same to be surveyed and platted as shown hereon and does hereby dedicate to the perpetual use of the public, as public highways, the Road, Avenue and Courts shown hereon, and the use of the Easements for the construction and maintenance of Public Utilities.
IN WITNESS WHEREOF, the said Corporation has caused these presents to be signed by its President and attested by its Secretary and its corporate seal to be affixed hereto, by and with the authority of its Board of Directors, this 5th day of DECEMBER, A.D. 1961.

ROYAL INC. OF PALM BEACH
Attest: *A. Kenneth County* Secretary By: *Floyd P. Blank* President

STATE OF FLORIDA
COUNTY OF PALM BEACH SS
I HEREBY CERTIFY, that on this day personally appeared before me, an officer duly authorized to administer oaths and take acknowledgments, FLOYD P. BLANK and A. KENNETH PINCOURT, JR. President and Secretary, respectively, of ROYAL INC. OF PALM BEACH, to me well known and known to me to be the individuals described in, and who executed the foregoing dedication and they acknowledged before me that they executed the same as such officers of said corporation by and with the authority of its Board of Directors, for the purposes therein expressed, and that their act and deed was the act and deed of said Corporation.
WITNESS my hand and official seal at West Palm Beach, Palm Beach County and State of Florida, this 5th day of DECEMBER, A.D. 1961.

John Adair, Jr.
Notary Public
My Commission expires: JULY 24, 1965

STATE OF FLORIDA
COUNTY OF PALM BEACH SS
WE HEREBY CERTIFY, that we have surveyed the outside boundaries and platted the tract of land as shown hereon as ROYAL PINES and that said plat is a true and correct representation thereof to the best of our knowledge and belief and that permanent reference monuments (P.R.M.) have been placed as required by law.
JOHN ADAIR, JR. & ASSOCIATES

By: *Douglas H. Miller*
Registered Land Surveyor
Florida Certificate No. 1457
Subscribed and sworn to before me this 4th day of DECEMBER, A.D. 1961.
John Adair, Jr.
Notary Public
My Commission expires: JULY 24, 1965

NOTE
All street intersections are rounded with a 30ft. radius.
P.R.M. indicates permanent reference monuments.
All curve distances shown are arc lengths.
Easements shown are for Public Utilities.
Building Setback Lines shall be in accordance with Palm Beach County Zoning Regulations.
There shall be no buildings or other structures placed on Utility Easements.

Approved: FEBRUARY 12, A.D. 1962
Board of County Commissioners
By: *Lee Lofal* Chairman
By: *Hyland Mead* County Engineer

1000-287

JOHN ADAIR JR. & ASSOC.
ENGINEERS and LAND SURVEYORS
LAKE WORTH, FLORIDA

ROYAL PINES
27/79
FP-310

DR. *R.W.*
CK. *R.W.*
APP. *Adair*
JOB NO. 51,268

SCALE: 1" = 50'
DATE: NOV. 1961