

DRAWING NUMBER
27-146

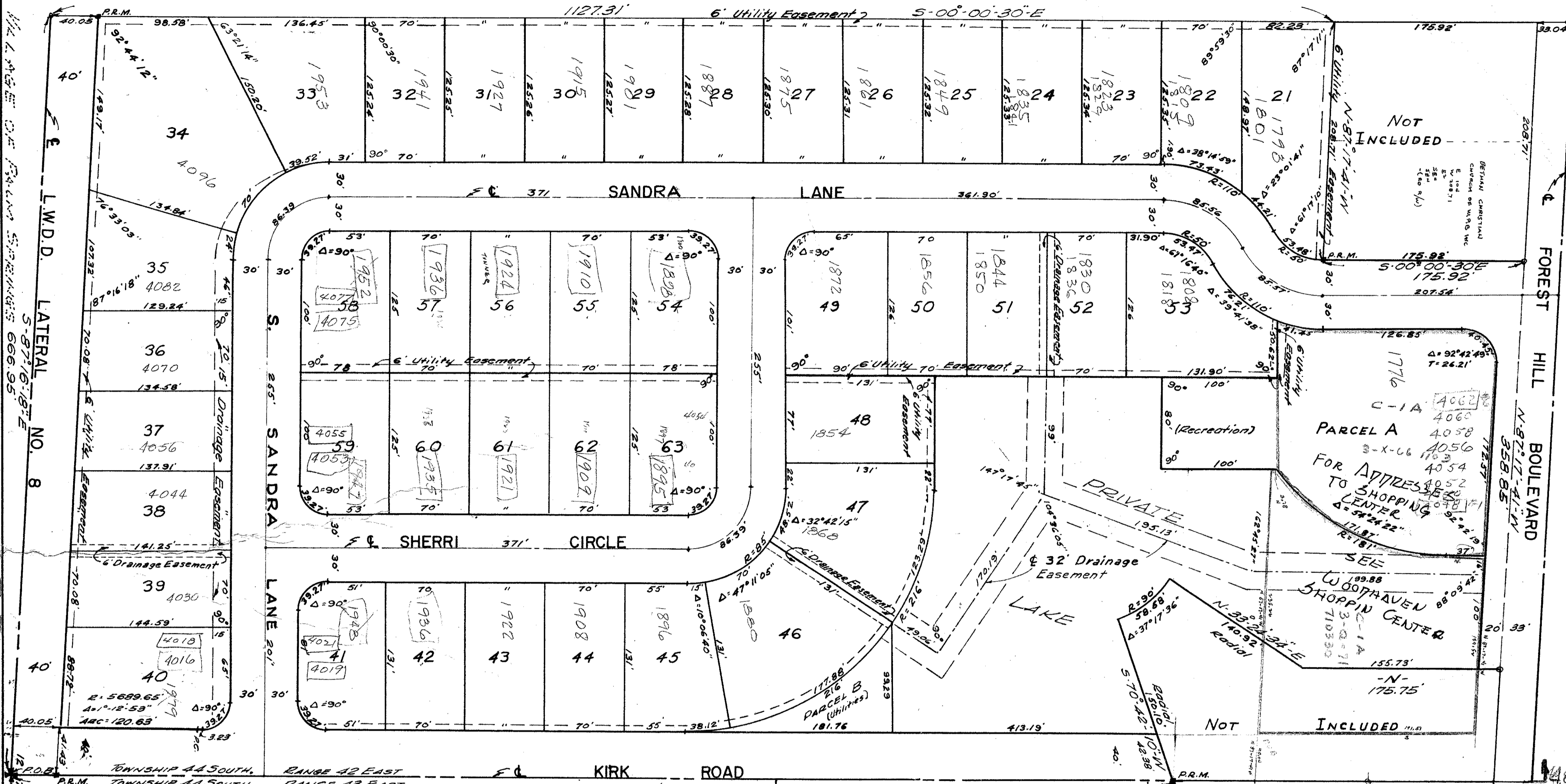
PLAT NUMBER TWO OF WOODHAVEN

A REPLAT OF PART OF TRACT 8, BLOCK 4, PALM BEACH PLANTATIONS, (MODEL LAND COMPANY'S SUBDIVISION OF SECTION 12, TOWNSHIP 44 SOUTH, RANGE 42 EAST,) AS RECORDED IN PLAT BOOK 10, PAGE 20,
PUBLIC RECORDS OF PALM BEACH COUNTY, FLORIDA.

146

TRACT 7, Block 4 (P.B. 10, Pg. 20)

32



STATE OF FLORIDA
COUNTY OF PALM BEACH
This Plat was filed for record on the 27th day of November, 1962, and duly recorded in Plat Book No. 10, page 20, on page 146.
J. ALEX ARNETTE, Clerk Circuit Court
By: *Bertie M. Kuback*

STATE OF FLORIDA
COUNTY OF PALM BEACH
I HEREBY CERTIFY that on this day personally appeared before me, an officer duly authorized to administer oaths and take acknowledgments, ALLEN E. SMOLEN and JOEL S. COURTMAN, President and Secretary respectively, of WYNNEWOOD BUILDERS, INC., to me well known and known to me to be the individuals described in and who executed the foregoing dedication, and they acknowledged before me that they executed the same as such officers of said Corporation, by and with the authority of the Board of Directors of said Corporation, for the purposes therein expressed, and their act and deed was the act and deed of said Corporation.
WITNESS my hand and official seal at West Palm Beach, County of Palm Beach and State of Florida, this 14th day of November, A.D. 1962.

Carlton C. Carlton
Notary Public

My commission expires: March 7, 1964

STATE OF FLORIDA
COUNTY OF PALM BEACH
I HEREBY CERTIFY that the plat shown hereon is a true and correct representation of a survey, made under my direction, of the herein described property, and that said survey is accurate to the best of my knowledge and belief, and that permanent reference monuments (P.R.M.) have been placed as required by law.

James O. Carlton
Registered Land Surveyor
Florida Certificate No. 787

Described and sworn to before me, this 14th day of November, A.D. 1962.

Carlton C. Carlton
Notary Public

My commission expires: March 7, 1964

STATE OF FLORIDA
COUNTY OF PALM BEACH
KNOW ALL MEN BY THESE PRESENTS that WYNNEWOOD BUILDERS, INC., a Florida Corporation, the Owner of the tract of land lying and being in Tract 8, Block 4, PALM BEACH PLANTATIONS (Model Land Company's Subdivision of Section 12, Township 44 South, Range 42 East, Palm Beach County, Florida) as recorded in Plat Book 10, Page 20, Public Records of Palm Beach County, shown hereon as PLAT NO. 2 OF WOODHAVEN and more particularly described as follows:
Beginning at the Southeast corner of said Section 12, thence on an assumed bearing of due North, along the East line of said Section 12, a distance of 1019.03 feet; thence S-70°-42'-10" W, a distance of 150.10 feet on a radial line to the intersection of a curve concave to the Southwest, having a radius of 90 feet; thence northwesterly along the arc of said curve and through an angle of 37°-17'-36", a distance of 58.58 feet; thence N-33°-24'-34" E, a distance of 140.92 feet; thence due North, a distance of 175.75 feet; thence N-87°-17'-41" W, a distance of 358.85 feet; thence S-00°-00'-30" E, a distance of 175.92 feet; thence N-87°-17'-41" W, a distance of 208.71 feet; thence S-00°-00'-30" E, a distance of 1127.31 feet; thence S-87°-16'-18" E, a distance of 666.95 feet to the point of beginning.
have caused the same to be surveyed and platted as shown hereon, and does hereby dedicate to the perpetual use of the public the Boulevard, Road, Lane & Circle, together with the drainage easements and utility easements as noted hereon.
IN WITNESS WHEREOF the said Corporation has caused these presents to be signed by its President and attested by its Secretary, and its Corporate Seal to be affixed hereto, by and with the authority of its Board of Directors, this 14th day of November, A.D. 1962.

Attest:
By: *Joel S. Courtman*
Secretary

WYNNEWOOD BUILDERS, INC.
By: *Allen E. Smolen*
President

NOTES:
Building set back lines to conform with Palm Beach County Zoning Regulations.
All corners with 25 ft. Radius unless otherwise noted.
No structures permitted on Utility Easements.
No trees, shrubs, buildings or permanent structures permitted on drainage easements.
All Utility Easements - 12' in width - 6' on each side of lot line.

Approved: NOVEMBER 21st A. 1962.
Board of County Commissioners.

By: *Lake Lytal*
Chairman

By: *DK Reed*
Asst. County Engineer

27
146

1000-308

12/44/42

JAMES O. CARLTON, INC. REGISTERED ENGINEERS & SURVEYORS.	
PLAT NO. 2, WOODHAVEN	
FIELD: M.P.K.	SCALE: 1"=60'
OFFICE: K.P.K.	
DRAWN: J.D.C.	
BOOK: N-1	NOVEMBER 1962

DRAWING NUMBER

DRAWING NUMBER

DRAWING NUMBER