

21-171
 PLAN HOLD CORPORATION • IRVINE, CALIFORNIA
 REGISTERED BY NUMBER 02048
 REVISION DATE OF PRINT OR FILE LINE

PLAT NO. 4

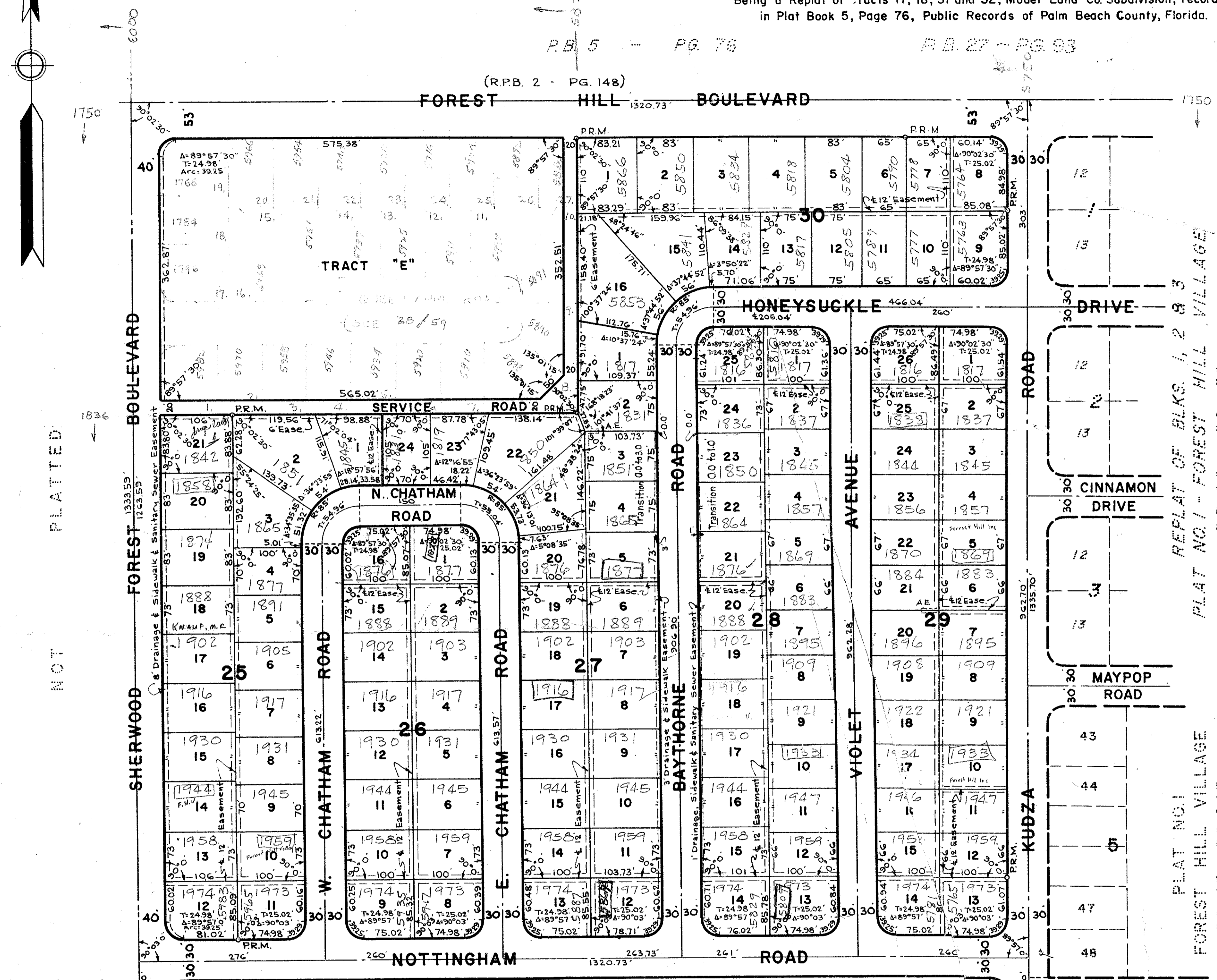
FOREST HILL VILLAGE

IN SECTION II, TWP. 44 S., RGE. 42 E.

PALM BEACH COUNTY, FLORIDA

Being a Replat of Tracts 17, 18, 31 and 32, Model Land Co. Subdivision, recorded in Plat Book 5, Page 76, Public Records of Palm Beach County, Florida.

STATE OF FLORIDA
 COUNTY OF PALM BEACH
 This Plat was filed for record at 4:21 P.M. on the 26th day of March 1963 and duly recorded in Plat Book No. 27 on page 171
 J. ALEX ARNETTE, Clerk Circuit Court
 By: Bertha M. Gibson



STATE OF FLORIDA
 COUNTY OF PALM BEACH

KNOW ALL MEN BY THESE PRESENTS, that FOREST HILL VILLAGE, INC., a Florida Corporation, the owner of the tract of land lying and being in Section II, Township 44 South, Range 42 East, Palm Beach County, Florida, shown hereon as PLAT NO. 4, FOREST HILL VILLAGE, and more particularly described as follows, to wit:

All of Tracts 17, 18, 31 and 32 of the Model Land Co. Subdivision of the West Half (W1/2) of Section II, Township 44 South, Range 42 East, recorded in Plat Book 5, Page 76, Public Records of Palm Beach County, Florida.

SUBJECT to existing Rights-of-Way of Record.

has caused the same to be surveyed and platted as shown hereon and does hereby dedicate to the perpetual use of the public, as public highways, the Streets shown hereon, and the use of the Easements for the construction and maintenance of Public Utilities and/or Drainage Purposes.

IN WITNESS WHEREOF, the said Corporation has caused these presents to be signed by its President and attested by its Secretary and its corporate seal to be affixed hereto, by and with the authority of its Board of Directors, this 14th day of November, A.D. 1962.

FOREST HILL VILLAGE, INC.

Attest: Stephen Abramson
 Secretary

By: [Signature]
 President

STATE OF FLORIDA
 COUNTY OF PALM BEACH

I HEREBY CERTIFY, that on this day personally appeared before me, an officer duly authorized to administer oaths and take acknowledgments, E.J. ROSSDIVITA and STEPHEN ABRAMSON, President and Secretary, respectively, of FOREST HILL VILLAGE, INC., a Florida Corporation, to me well known and known to me to be the individuals described in, and who executed the foregoing dedication, and they acknowledged before me that they executed the same as such officers of said Corporation, by and with the authority of its Board of Directors for the purposes therein expressed, and that their act and deed was the act and deed of said Corporation.

WITNESS my hand and official seal at West Palm Beach, County of Palm Beach and State of Florida, this 14th day of November, A.D. 1962.

[Signature]
 Notary Public

My Commission expires: Aug. 7, 1965

27/171

NOTE

All Block Corners are rounded with a 25ft. radius curve, unless otherwise shown.

Easements are for Public Utilities, unless otherwise noted.

6' x 18' Anchor Easements (A.E.)

NOTE

Building Setback Lines shall be as required by Palm Beach County Zoning Regulations.

There shall be no building or other structures placed on Utility Easements.

There shall be no buildings or any kind of construction, or trees or shrubs placed on Drainage Easements.

Tract "E" is reserved and will not be used for Replat unless Replatted.

11-44-42

BROCKWAY WEBER & BROCKWAY
 ENGINEERS, INCORPORATED
 WEST PALM BEACH, FLORIDA

PLAT NO. 4
 FOREST HILL VILLAGE

J.J.F.
 M.G.B.
 OCTOBER 1962

STATE OF FLORIDA
 COUNTY OF PALM BEACH
 I HEREBY CERTIFY, that the plat shown hereon is a true and correct representation of a survey, made under my direction, of the hereon described property, and that said survey is accurate to the best of my knowledge and belief, and that permanent reference monuments (P.R.M.) have been placed as required by law.

[Signature]
 Registered Land Surveyor
 Florida Certificate No. 831

Subscribed and sworn to before me this 4th day of December, A.D. 1962.

Approved: MARCH 11TH, A.D. 1963
 Board of County Commissioners

By: E. J. Van Kessel
 Chairman

FOREST HILL VILLAGE - #4

My Commission expires: August 7, 1965

County Engineer

HC-24-A

58-770