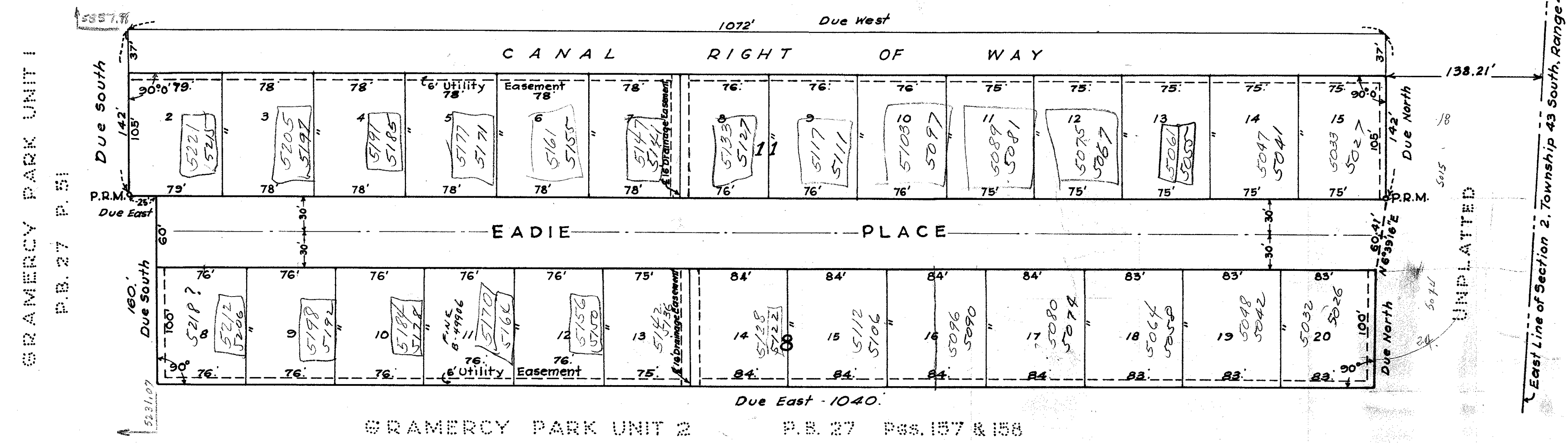


REPLAT OF
LOTS 2 through 17, BLOCK 11, and LOTS 8 through 23, BLOCK 8, OF THE PLAT OF
GRAMERCY PARK, UNIT 2,
IN SECTION 2, TOWNSHIP 43 SOUTH, RANGE 42 EAST IN
PALM BEACH COUNTY, FLORIDA

UNPLATTED



STATE OF FLORIDA
COUNTY OF PALM BEACH
This Plan was filed for record on 19 day of April 1963
and duly recorded in Plat Book No. 63 at page 178
J. M. Backlund, Clerk Circuit Court

STATE OF FLORIDA
COUNTY OF PALM BEACH

KNOW ALL MEN BY THESE PRESENTS that GOLDCOAST BUILDERS INC., a Florida Corporation, the Owner of the tract of land lying and being in GRAMERCY PARK, UNIT 2, recorded in Plat Book 27, pages 157 and 158, Public Records of Palm Beach County, Florida, shown hereon as Replat of Lots 2 through 17, Block 11 and Lots 8 through 23, Block 8 of said plat of GRAMERCY PARK, UNIT 2, in Section 2, Township 43 South, Range 42 East, Palm Beach County, Florida, have caused the same to be surveyed and replatted as shown hereon, and do hereby dedicate to the perpetual use of the public, as public highway the Place shown hereon, and the use of the canal & the Easements for the construction and maintenance of Public Utilities and/or Drainage purposes.
IN WITNESS WHEREOF, the said Corporation has caused these presents to be signed by its President and attested by its Secretary and its corporate seal to be affixed hereto, by and with the authority of its Board of Directors this 10th day of April A.D. 1963

Attest: Louis F. Zehle Secretary By: Nathan Adler President
GOLDCOAST BUILDERS INC.

STATE OF FLORIDA
COUNTY OF PALM BEACH

I HEREBY CERTIFY that on this day personally appeared before me an officer duly authorized to administer oaths and take acknowledgments, NATHAN ADLER and LOUIS F. ZEHLE, President and Secretary, respectively, of GOLDCOAST BUILDERS, INC., to me well known and known to me to be the individuals described in, and who executed the foregoing dedication, and they acknowledged before me that they executed the same as such officers of said Corporation by and with the authority of its Board of Directors for the purposes therein expressed, and that their act and deed was the act and deed of said Corporation.
WITNESS my hand and official seal of West Palm Beach, County of Palm Beach and State of Florida, this 10th day of April A.D. 1963

Barry L. Beckman
My Commission expires: Aug 14, 1964

STATE OF FLORIDA
COUNTY OF PALM BEACH
I HEREBY CERTIFY that the plat shown hereon is a true and correct representation of a survey, made under my direction of the hereon described property, and that said survey is accurate to the best of my knowledge and belief, and that permanent reference monuments (P.R.M.) have been placed as required by law.

James D. Carlton
Registered Land Surveyor
Florida Certificate No. 747
Subscribed and sworn to before me this 10th day of April, A.D. 1963
Georgie C. Gardner
Notary Public
My Commission expires: March 7, 1964

NOTE
Easements are for Public Utilities, unless otherwise shown.
Building Setback Lines shall be as required by Palm Beach County, Florida.
There shall be no buildings or other structures placed on Utility Easements.
There shall be no buildings or any kind of construction or trees or shrubs placed on Drainage Easements.

27/178

2-43-42

1000-325

Approved: APRIL 17, A.D. 1963
Board of County Commissioners
By: Edward Paulson Vice-Chairman
By: Paul McCarty Assist. Engineer

GRAMERCY PARK - UNIT 2

JAMES D. CARLTON, INC.
ENGINEERS & SURVEYORS
REPLAT OF
LOTS 2 thru 17, BLOCK 11 & LOTS 8 thru 23, BLOCK 8,
GRAMERCY PARK, UNIT 2
FIELD: K.P.K. Scale: 1"=60' Job No.
OFFICE: J.D.C.
DRAWN BY: J.D.C. APRIL 1963

DRAWING NUMBER
27-178

DRAWING NUMBER

DRAWING NUMBER

DRAWING NUMBER