

DRAWING NUMBER  
27-204

DRAWING NUMBER

DRAWING NUMBER

DRAWING NUMBER

# REPLAT OF A PORTION OF PLAT NO. 2 PALM BEACH NATIONAL GOLF AND COUNTRY CLUB ESTATES IN SECTION 21, TWP. 44 S., RGE. 42 E. PALM BEACH COUNTY, FLORIDA

Being a replat of all of lots 283 through 307, Palm Beach National Golf and Country Club Estates, Plat No. 2, as recorded in Plat Book 27 Pages 152, 153 and 154, Public Records of Palm Beach County, Florida

204  
STATE OF FLORIDA  
COUNTY OF PALM BEACH  
This Plat was filed for record at 1:57 PM  
this 13 day of Aug  
1963 and duly recorded in Plat Book No  
27 on page 204  
J. ALEX. ARNETT, Notary Public  
By Bertha M. Ribon

STATE OF FLORIDA  
COUNTY OF PALM BEACH  
AS OWNER AND HOLDER, of that certain mortgage dated March 6, 1963 and recorded in Official Record Book 372 Page 574 Public Records of Palm Beach County, Florida, the undersigned hereby consents to and joins in the making and filing for record of this plat and to the dedication of the Streets and Easements shown hereon.

FIRST FEDERAL SAVINGS & LOAN ASSOCIATION of BROWARD COUNTY  
Attest: Thelma Turner Secretary By: E. Thomas Wilburn President

STATE OF FLORIDA  
COUNTY OF PALM BEACH  
I HEREBY CERTIFY, that on this day personally appeared before me, an officer duly authorized to administer oaths and take acknowledgments, E. THOMAS WILBURN and THELMA TURNER, President and Secretary, respectively, of the FIRST FEDERAL SAVINGS & LOAN ASSOCIATION of BROWARD CO., to me well known and known to me to be the individuals described in, and who executed the foregoing dedication, and they acknowledged before me that they executed the same as such officers of said Trustee, by and with the authority of its Board of Directors for the purposes therein expressed, and that their act and deed was the act and deed of said Trustee.  
WITNESS my hand and official seal at Ft. Lauderdale, County of Broward and State of Florida, this 23<sup>rd</sup> day of July, A.D. 1963.

Carol Koelner  
Notary Public

My Commission expires: April 6, 1965

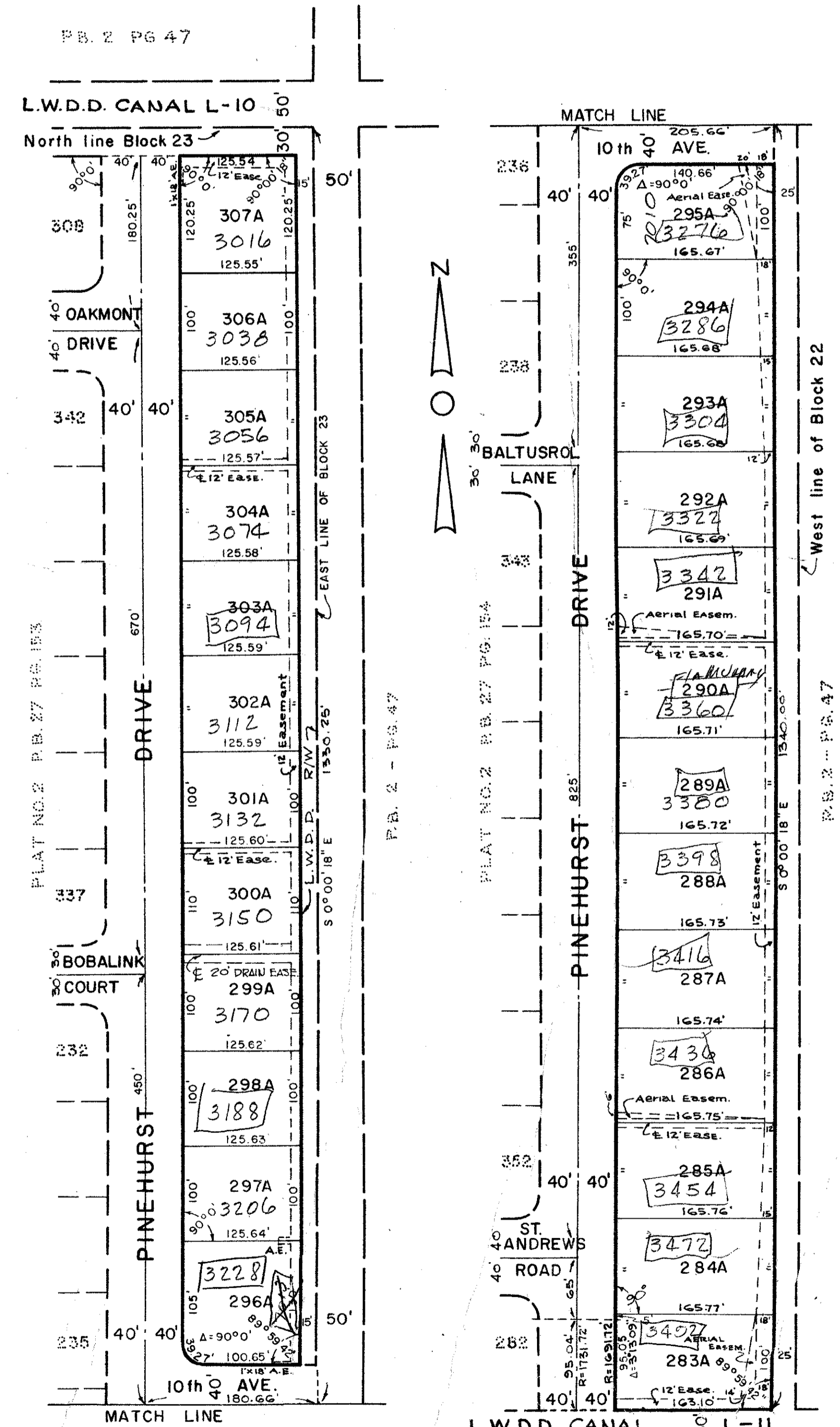
STATE OF FLORIDA  
COUNTY OF PALM BEACH  
WE HEREBY CERTIFY, that we have surveyed the outside boundaries and platted the tract of land as shown hereon as REPLAT OF A PORTION OF PLAT NO. 2, PALM BEACH NATIONAL GOLF AND COUNTRY CLUB ESTATES, and that said plat is a true and correct representation thereof to the best of our knowledge and belief, and that permanent reference monuments (P.R.M.) have been placed as required by law.

JOHN ADAIR, JR. & ASSOCIATES  
By: John Adair, Jr.  
Registered Land Surveyor  
Florida Certificate No. 1343

Subscribed and sworn to before me this 16<sup>th</sup> day of July, A.D. 1963.

L. Jona Maynard  
Notary Public

My Commission expires: Dec. 3, 1965



STATE OF FLORIDA  
COUNTY OF PALM BEACH  
KNOW ALL MEN BY THESE PRESENTS, that PALM BEACH BUILDING SPECIALTIES, INC., a Florida Corporation, the owner of the tract of land lying and being in Section 21, Township 44 South, Range 42 East, Palm Beach County, Florida, shown hereon as REPLAT OF A PORTION OF PLAT NO. 2, PALM BEACH NATIONAL GOLF AND COUNTRY CLUB ESTATES, and more particularly described as follows, to wit:

Lots 283 through 307, Palm Beach National Golf & Country Club Estates, Plat No. 2, as recorded in Plat Book 27, Page 152 through 154, in the Public Records of Palm Beach County, Florida; Also, the West one-half of the South 1340.00 feet of the abandoned Right-of-Way lying between the North one-half of Block 22 and Block 23, Palm Beach Farms Company Plat No. 3, as recorded in Plat Book 2, Page 47, in the Public Records of Palm Beach County, Florida.

has caused the same to be surveyed and platted as shown hereon and does hereby dedicate to the perpetual use of the Public, as public highways, the streets shown hereon, and the use of the Easements for the construction and maintenance of Public Utilities, and/or Drainage Purposes.

IN WITNESS WHEREOF, the said Corporation has caused these presents to be signed by its President and attested by its Secretary and its Corporate Seal to be affixed hereto by and with the authority of its BOARD OF DIRECTORS, this 29<sup>th</sup> day of July, A.D. 1963.

Attest: L. Jona Maynard Secretary By: Ray C. George President

PALM BEACH BUILDING SPECIALTIES, INC.

STATE OF FLORIDA  
COUNTY OF PALM BEACH  
I HEREBY CERTIFY, that on this day personally appeared before me, an officer duly authorized to administer oaths and take acknowledgments, R.E. GEORGE and LIONA MAYNARD, President and Secretary, respectively, of PALM BEACH BUILDING SPECIALTIES, INC., to me well known and known to me to be the individuals described in, and who executed the foregoing dedication, and they acknowledged before me that the executed the same as such officers of said Corporation, by and with the authority of its Board of Directors for the purposes therein expressed, and that their act and deed was the act and deed of said Corporation.  
WITNESS my hand and official seal at Lake Worth, County of Palm Beach and State of Florida, this 29<sup>th</sup> day of July, A.D. 1963.

Lionela Maynard  
Notary Public

My Commission expires: September 18, 1965

### NOTE

Building Setback Lines shall be as required by Palm Beach County Zoning Regulations. There shall be no buildings or other structures placed on Utility Easements. There shall be no buildings or any kind of construction or trees or shrubs placed on Drainage Easements.

All Block Corners are rounded with a 25ft. radius curve, unless otherwise shown. Easements are for Public Utilities, unless otherwise noted.

6' x 12' Anchor Easements (A.E.)

Approved: August 12<sup>th</sup>, A.D. 1963  
Board of County Commissioners

By: E. F. Van Kessel  
Chairman

REPLAT OF A PORTION OF PLAT NO. 2  
PALM BEACH NATIONAL GOLF & COUNTRY CLUB ESTATES  
27-204  
JOHN ADAIR, JR., L.S., S.C.  
ENGINEER AND SURVEYOR  
JUNE 1963  
SCALE 1" = 100'  
JOB NO. 62-204

# P. B. NAT. GOLF & COUNTRY CLUB