

27-217

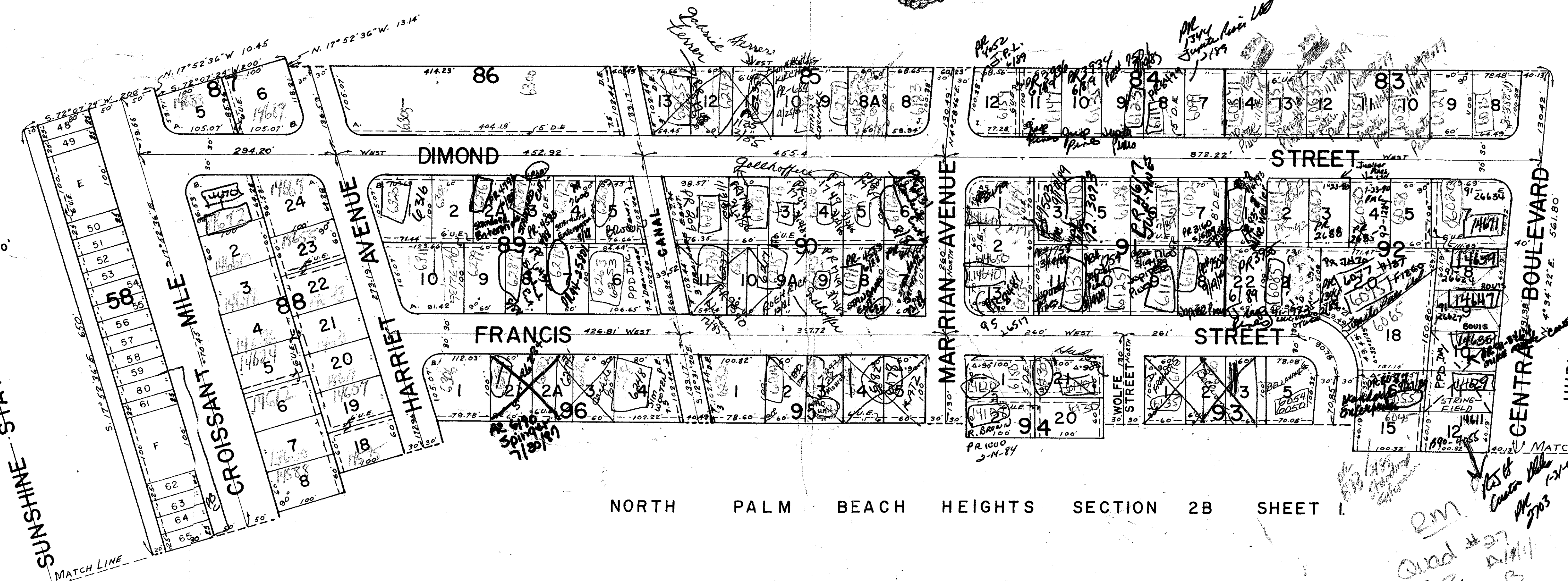
PLAT OF
NORTH PALM BEACH HEIGHTS SECTION 2B
SHEET 2 OF 2 SHEETS

217

UNPLATTED

CURVE DATA: R=25'

A. Δ=72°07'24" T=18.20' Arc=31.47'
 B. Δ=107°52'36" T=34.33' Arc=47.07'
 C. Δ=94°34'22" T=27.08' Arc=41.27'
 D. Δ=85°25'38" T=23.08' Arc=37.27'
 E. Δ=94°58'46" T=27.27' Arc=41.44'
 J. Δ=88°01'14" T=22.92' Arc=37.10'



* NOTES:

DE= Drainage Easement
 UE= Utility Easement
 All block corners rounded with a 25 foot radius curve unless otherwise noted.
 Dimensions are shown to the intersection point.
 Building setback lines shall be as required by Palm Beach County, Florida.
 There shall be no buildings or other structures placed on Utility Easements.
 There shall be no buildings or any type of structures or trees or shrubs placed on Drainage Easements.

Block 92
 Lot 8+9 D21333
 FENCE - JUPITER PINES



NORTH PALM BEACH HEIGHTS SECTION 2B SHEET I

NORTH PALM BEACH HEIGHTS SECT. 2B

0479-302

27/217
22-41-42

JAMES D. CARLTON INC.
REGISTERED ENGINEERS & LAND SURVEYORS

PLAN HOLD CORPORATION • IRVINE, CALIFORNIA

REGISTERED NUMBER 00000

PLAN HOLD CORPORATION • IRVINE, CALIFORNIA

REGISTERED NUMBER 00000

PLAN HOLD CORPORATION • IRVINE, CALIFORNIA

REGISTERED NUMBER 00000