

DRAWING NUMBER
27-243

DRAWING NUMBER

DRAWING NUMBER

DRAWING NUMBER

PLAT OF HIDDEN KEY

IN THE SE 1/4 OF THE NW 1/4 AND GOVERNMENT LOT 3 OF SECTION 4, TWP. 42 S., RGE. 43 E.,
SCALE: 1" = 60'

PALM BEACH COUNTY, FLORIDA
K. C. MOCK & ASSOCIATES, INC.
ENGINEERS SURVEYORS
WEST PALM BEACH FLORIDA

13

Agreed Shore Line As Shown In
O.R.B. 593 Pages 681, 682 & 683

243

STATE OF FLORIDA
COUNTY OF PALM BEACH
This Plat was filed for record at 4:45 P.M.
this 3rd day of FEBRUARY
1964 and duly recorded in Plat Book No.
27 on page 243
J. ALAN ARNETTER, Clerk (Circuit Court)
By *Bertie M. Moran*

STATE OF FLORIDA
COUNTY OF PALM BEACH

AS OWNER AND HOLDER of that Certain Mortgage,
Dated 2/28/63 and Recorded in Official Record Book 412,
Page 401, Palm Beach County Public Records, The Under-
signed Hereby Consents To And Joins In The Making And
Filing For Record Of This Plat And To The Dedication To
The Public Of The Streets, Roads And Easements Shown
Hereon.

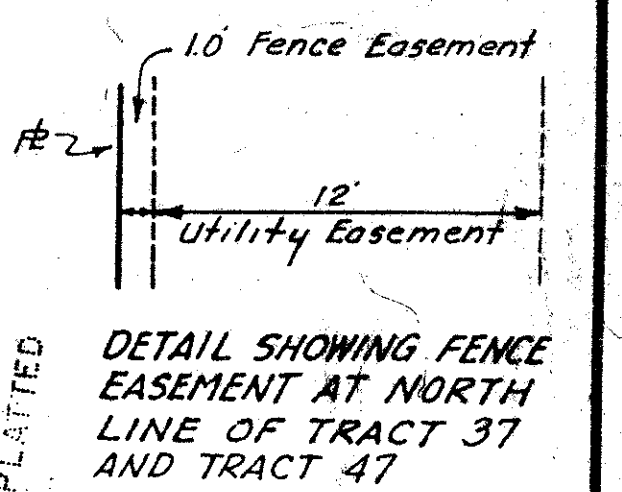
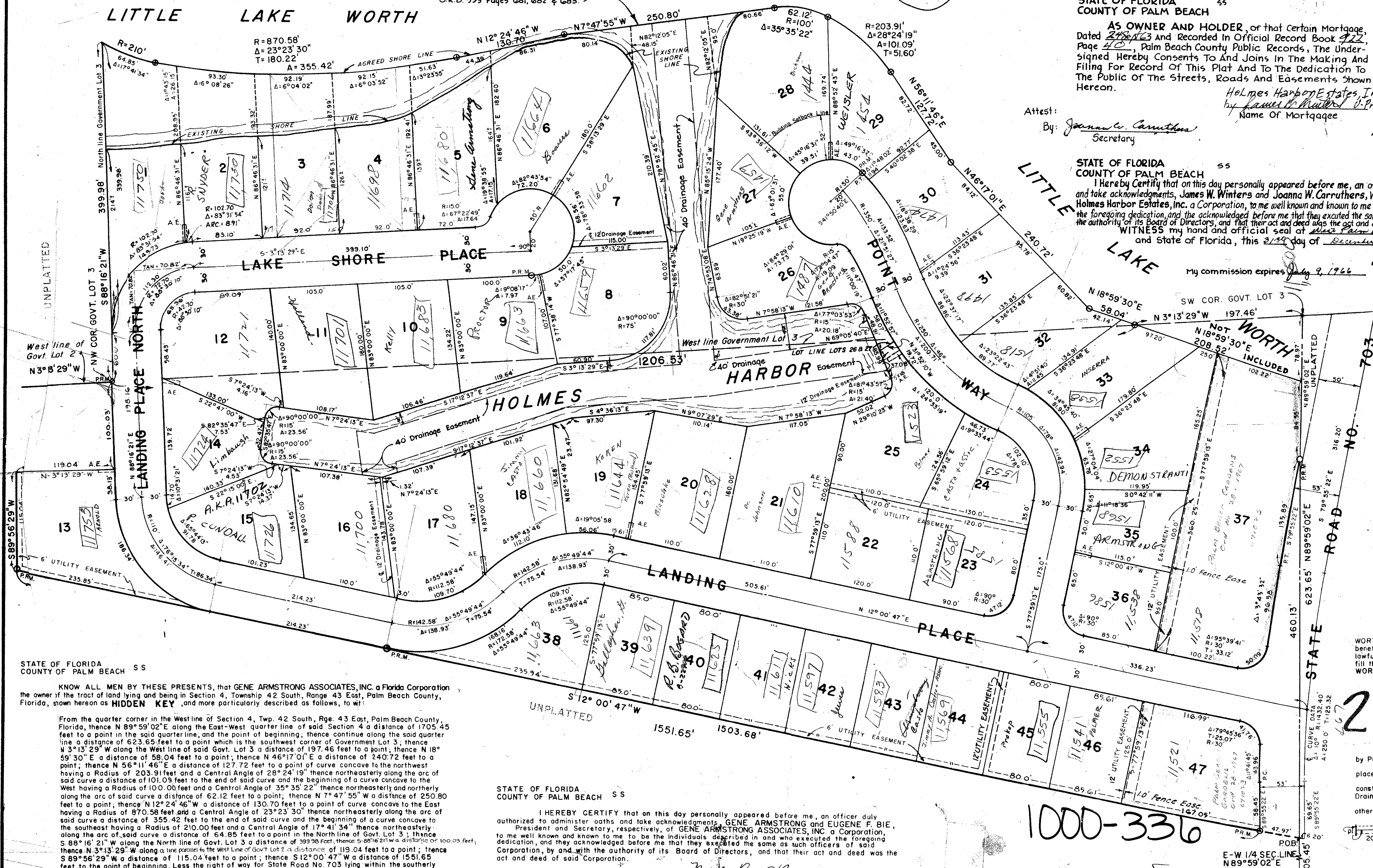
Attest:
By: *Joanna W. Carruthers*
Secretary

Delores Clayton
Witness

STATE OF FLORIDA
COUNTY OF PALM BEACH

I hereby certify that on this day personally appeared before me, an officer duly authorized to administer oaths and take acknowledgments, James W. Winters and Joanna W. Carruthers, Vice President and Secretary, respectively, of Holmes Harbor Estates, Inc. a Corporation, to me well known and known to me to be the individuals described in and who executed the foregoing dedication, and the acknowledged before me that they executed the same as such officers of said Corporation, in and with the authority of its Board of Directors, and that their act and deed was the act and deed of said Corporation, and State of Florida, this 27th day of December, A.D. 1963.

Eugene J. Price
Notary Public
My commission expires July 9, 1964



NOTE
HOLMES HARBOR and LITTLE LAKE WORTH shown hereon are intended for the use and benefit of all lot owners in this subdivision for all lawful recreational purposes, and no person may fill the said HOLMES HARBOR or LITTLE LAKE WORTH or any portion thereof.

27/243
NOTE

Building Set Back Lines shall be as required by Palm Beach County Zoning Regulations. There shall be no buildings or other structures placed on Utility Easements. There shall be no buildings or any kind of construction or trees or shrubs placed on Drainage Easements. All Easements are for Public Utilities unless otherwise noted. 5' x 20' Anchor Easement shown thus

STATE OF FLORIDA
COUNTY OF PALM BEACH
KNOW ALL MEN BY THESE PRESENTS, that GENE ARMSTRONG ASSOCIATES, INC. a Florida Corporation the owner of the tract of land lying and being in Section 4, Township 42 South, Range 43 East, Palm Beach County, Florida, shown hereon as HIDDEN KEY, and more particularly described as follows, to wit:

From the quarter corner in the West line of Section 4, Twp. 42 South, Rge. 43 East, Palm Beach County, Florida, thence N 89° 59' 02" E along the East-West quarter line of said Section 4 a distance of 1705.45 feet to a point in the said quarter line, and the point of beginning, thence continue along the said quarter line a distance of 623.65 feet to a point which is the southwest corner of Government Lot 3, thence N 13° 13' 29" W along the West line of said Govt. Lot 3 a distance of 197.46 feet to a point, thence N 18° 59' 30" E a distance of 58.04 feet to a point; thence N 46° 17' 01" E a distance of 240.72 feet to a point; thence N 56° 11' 46" E a distance of 127.72 feet to a point of curve concave to the northwest having a Radius of 203.91 feet and a Central Angle of 28° 24' 19" thence northeasterly along the arc of said curve a distance of 101.03 feet to the end of said curve and the beginning of a curve concave to the West having a Radius of 100.00 feet and a Central Angle of 35° 35' 22" thence northeasterly and northerly along the arc of said curve a distance of 62.12 feet to a point; thence N 7° 47' 55" W a distance of 250.80 feet to a point; thence N 12° 24' 46" W a distance of 130.70 feet to a point of curve concave to the East having a Radius of 870.58 feet and a Central Angle of 23° 23' 30" thence northeasterly along the arc of said curve a distance of 355.42 feet to the end of said curve, and the beginning of a curve concave to the southeast having a Radius of 210.00 feet and a Central Angle of 17° 41' 34" thence northeasterly along the arc of said curve a distance of 64.85 feet to a point in the North line of Govt. Lot 3; thence S 88° 16' 21" W along the North line of Govt. Lot 3 a distance of 399.96 feet, thence S 88° 16' 21" W a distance of 115.04 feet to a point; thence S 89° 56' 29" W a distance of 115.04 feet to a point; thence S 12° 00' 47" W a distance of 1551.65 feet to the point of beginning. Less the right of way for State Road No. 703 lying within the southerly portion thereof, and less that parcel marked "NOT INCLUDED".

STATE OF FLORIDA
COUNTY OF PALM BEACH

I HEREBY CERTIFY that on this day personally appeared before me, an officer duly authorized to administer oaths and take acknowledgments, GENE ARMSTRONG and EUGENE F. BIE, President and Secretary, respectively, of GENE ARMSTRONG ASSOCIATES, INC. a Corporation, to me well known and known to me to be the individuals described in and who executed the foregoing dedication, and they acknowledged before me that they executed the same as such officers of said Corporation, by and with the authority of its Board of Directors, and that their act and deed was the act and deed of said Corporation.

WITNESS my hand and official seal of *North Palm Beach* County of Palm Beach and State of Florida, this 19th day of December, A.D. 1963

Eugene F. Bie
Notary Public

STATE OF FLORIDA
COUNTY OF PALM BEACH

I HEREBY CERTIFY that the plat shown hereon is a true and correct representation of a survey made under my direction, of the foregoing described property, and that said survey is accurate to the best of my knowledge and belief, and that Permanent Reference Monuments (P.R.M.) have been placed as required by law.

John B. Alderson
Registered Land Surveyor
Florida Certificate No. 1147

Subscribed and sworn to before me this 19th day of December, A.D. 1963

has caused the same to be surveyed and plotted as shown hereon, and does hereby dedicate to the perpetual use of the public, as public highways the Streets shown hereon, and the use of the Easements for the construction and maintenance of Public Utilities, and/or drainage, and the use of HOLMES HARBOR for recreational purposes.
IN WITNESS WHEREOF the said Corporation has caused these presents to be signed by its President and attested by its Secretary, and its corporate seal to be affixed hereto, by and with the authority of its Board of Directors this 19th day of December, A.D. 1963

GENE ARMSTRONG ASSOCIATES, INC.

Attest:
By: *Eugene F. Bie* Secretary
By: *Gene Armstrong* President

My Commission expires May 19, 1964
HIDDEN KEY

4-42-43
Plat Approved January 27th, A.D. 1964
Board of County Commissioners

27/243