

# PLAT OF JUPITER CRESTA UNIT TWO

A PART OF THE NORTHEAST QUARTER OF THE NORTHEAST QUARTER OF  
SECTION 25 - TOWNSHIP 40 SOUTH - RANGE 42 EAST,  
PALM BEACH COUNTY, FLORIDA

STATE OF FLORIDA  
COUNTY OF PALM BEACH  
This Plat was filed for record on 2:54 P.M.  
the 7th day of May  
1964 and was recorded in Public Records  
28 Page 10  
J. B. B. & S. B. B.  
Bertha M. Gibson

STATE OF FLORIDA  
COUNTY OF PALM BEACH

KNOW ALL MEN BY THESE PRESENTS, that JUPITER CRESTA, INC., a FLORIDA CORPORATION, the owner of a tract of land lying and being in the Northeast 1/4 of the Northeast 1/4 of Section 25, Township 40 south, Range 42 east, County of Palm Beach, State of Florida, shown hereon as JUPITER CRESTA, UNIT 2, and more particularly described as follows:

Commencing at the N.40 Acre Corner in the East line of Section 25, Township 40 south, Range 42 east; Palm Beach County, Florida; thence on an assumed bearing of N.89°37'16" W. along the East-West 1/4 Section Line of said Section 25, a distance of 340.16 feet; thence due North a distance of 140 feet to the Point of Beginning; thence due North 16 feet; thence N. 89°37'16" W. a distance of 45 feet; thence due North a distance of 100 feet; thence N. 89°37'16" W. a distance of 55 feet; thence due North a distance of 160 feet; thence N. 89°37'16" W. a distance of 65 feet; thence due North a distance of 100 feet; thence N. 89°37'16" W. a distance of 635.01 feet; thence due South a distance of 520 feet; thence S. 89°37'16" E. a distance of 800.01 feet to the Point of Beginning.

has caused the same to be surveyed and platted as shown hereon, and does hereby dedicate to the perpetual use of the public, as public highways, the Streets and Road shown hereon, and the use of the Easements for the construction and maintenance of Public Utilities and for Drainage purposes.

IN WITNESS WHEREOF, the said Corporation has caused these presents to be signed by its President and attested by its Secretary, and its corporate seal to be affixed hereon, by and with the authority of its Board of Directors, this 15 day of April, A.D. 1964

JUPITER CRESTA, INC.

Attest: Wynne M. Casteel Jr. By: Wynne M. Casteel  
Secretary President

STATE OF FLORIDA  
COUNTY OF BROWARD

I HEREBY CERTIFY that on this day personally appeared before me, an officer duly authorized to administer oaths and take acknowledgments, WYNNE M. CASTEEL and WYNNE M. CASTEEL, JR., President and Secretary, respectively, of JUPITER CRESTA, INC.; to me well known and known to me to be the individuals described in, and who executed the foregoing dedication, and they acknowledged before me that they executed the same as such officers of said Corporation and with the authority of its Board of Directors for the purposes therein expressed, and that their act and deed was the act and deed of said Corporation.

WITNESS my hand and official seal at Fort Lauderdale, County of Broward and State of Florida, this 15 day of April, A.D. 1964

My Commission expires: February 3, 1966 Montes S. Ferguson  
Notary Public

STATE OF FLORIDA  
COUNTY OF PALM BEACH

I HEREBY CERTIFY that the plat shown hereon is a true and correct representation of a survey, made under my direction, of the hereon described property, and that said survey is accurate to the best of my knowledge and belief, and that permanent reference monuments (P.R.M.) have been placed as required by law.

W. J. Wilson  
Registered Land Surveyor  
Florida Certificate No. 747

Subscribed and sworn to before me this 22 day of April, 1964

Edgar S. Carlton  
Notary Public

My Commission expires March 6, 1968

Approved: 7 14 64 A.D. 1964  
Board of County Commissioners

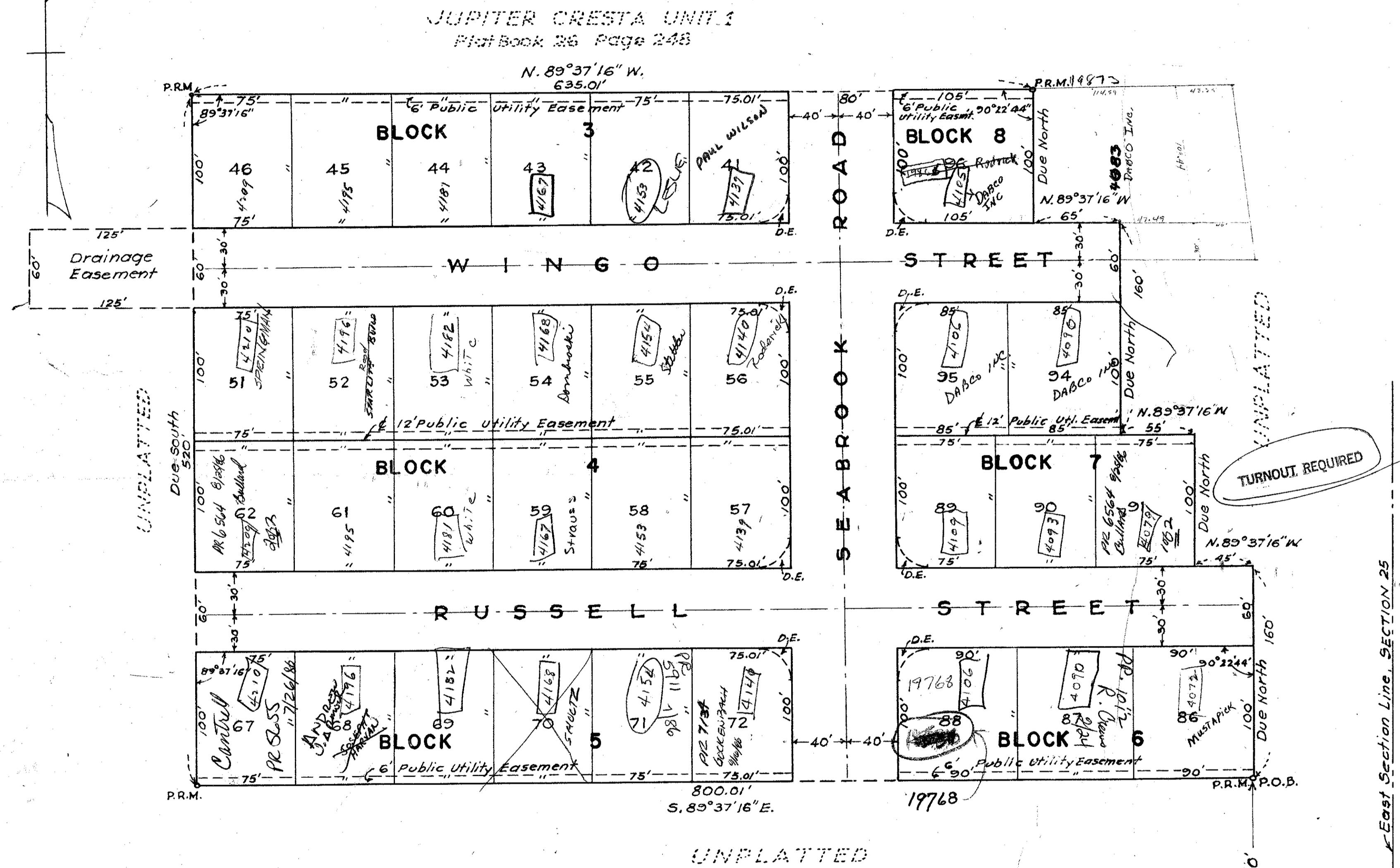
By: Edward J. Rowland  
Chairman

By: [Signature]  
County Engineer

1000-203

25/40/42  
JUPITER CRESTA  
UNIT NO. 2

Checked by: JDC SCALE: 1in.=60ft  
Drawn by: LWJ DATE:



NOTE  
Easements are for Public Utilities, unless otherwise shown.  
Building Setback Lines shall be as required by Palm Beach County, Florida.  
There shall be no buildings or other structures placed on Utility Easements.  
There shall be no buildings or any kind of construction or trees or shrubs placed on Drainage Easements.  
D.E. indicates Drainage Easement  
Radius = 25 feet

DRAWING NUMBER 28-10  
PLAN HOLD CORPORATION - PALM BEACH, CALIFORNIA  
REGISTERED BY NUMBER 02048  
REGISTRATION CODE OF PART OR THE WHOLE  
DRAINAGE EASEMENT